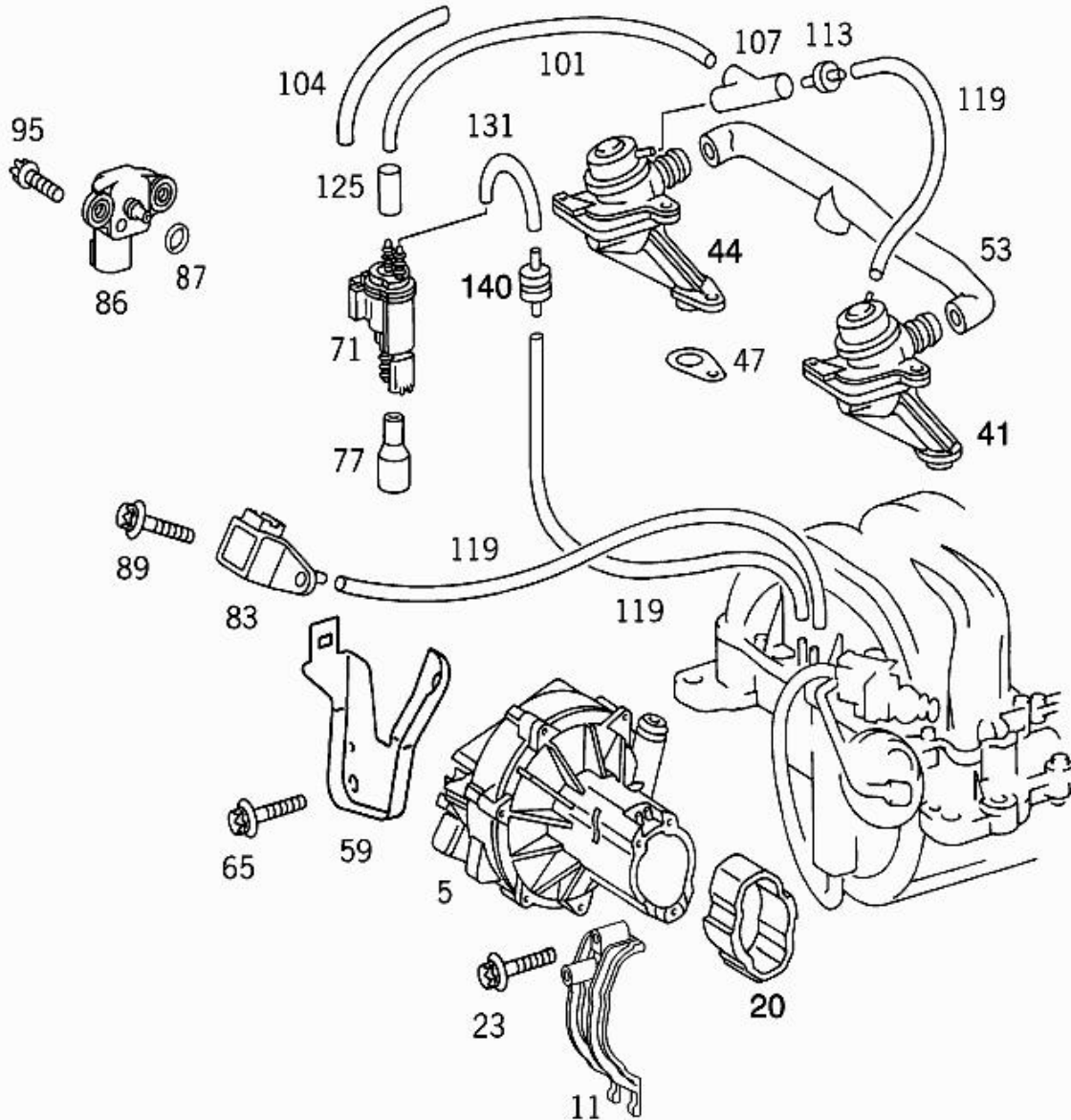


- Picture -






Mode	MD mode	Mod. des. overview	S-SEDAN LONG WHEELBASE USA
FIN/MD	WDB 2201701A187200	Catalog	07N
VIN	WDBNG70J11A187200	Major assembly	M - Engine
Sales designation	S 430	Major assembly MD	113941 30 262745
Assortment class	Car	Group	14 - INTAKE AND EXHAUST MANIFOLDS
Market	North America	Subgroup	105 - AIR PUMP
Picture number	B14105000026.021216		



- Parts list -

Mode	MD mode	Mod. des. overview	S-SEDAN LONG WHEELBASE USA
FIN/MD	WDB 2201701A187200	Catalog	07N
VIN	WDBNG70J11A187200	Major assembly	M - Engine
Sales designation	S 430	Major assembly MD	113941 30 262745
Assortment class	Car	Group	14 - INTAKE AND EXHAUST MANIFOLDS
Market	North America	Subgroup	105 - AIR PUMP

Item no.	Part number	Designation/description	Quantity	Version
5	A 000 140 37 85	PUMP (AIR PUMP),ELECTRIC	001	
11	A 112 237 02 40	BRACKET AIR PUMP Code: 494 [016] Up to engine: 30 417318	001	
11	A 112 237 08 40	BRACKET AIR PUMP Code: 494 [017] As of engine 30 417319	001	
20	A 112 237 00 12	BUFFER AIR PUMP	001	
23	A 001 990 78 22	SCREW BRACKET AND RUBBER MOUNTING AT TIMING CASE	001	
41	A 002 140 35 60	VALVE SHUT-OFF VALVE LEFT	001	
44	A 002 140 36 60	VALVE SHUT-OFF VALVE RIGHT	001	
47	A 112 238 00 80	GASKET SHUT-OFF VALVE	002	
53	A 112 238 00 82	HOSE	001	
59	A 112 237 01 40	BRACKET	001	
65	N 000000 001116	HEXALOBULAR BOLT BRACKET TO WATER PUMP	002	
71	A 002 540 70 97	CHANGE-OVER VALVE (ELECTRIC CHANGE-OVER VALVE)	001	
77	A 117 078 09 81	BOOT AIR PUMP CONTROL	001	
83	A 011 542 06 17	PRESSURE SENSOR Code: 494/479 [801] UP TO THE END OF MODEL YEAR 2000 - CODE 800	001	
86	A 005 153 50 28	SENDER UNIT (PRESSURE SENSOR) [810] FROM MODEL YEAR 2001 - CODE 801	001	
87	A 027 997 27 48	SEAL RING [810] FROM MODEL YEAR 2001 - CODE 801	001	
89	N 910143 006000	SCREW PRESSURE SENSOR AT BRACKET Code: 494/479 [801] UP TO THE END OF MODEL YEAR 2000 - CODE 800	001	
95	N 910142 006001	SCREW PRESSURE SENSOR AT BRACKET M 6X16 [810] FROM MODEL YEAR 2001 - CODE 801	001	
101	A 000 158 14 35	PIPE LINE FROM ELECTRIC CHANGE-OVER VALVE TO DISTRIBUTOR 110 MM [404] ORDER BY THE METER	001	

104	N 040621 018200	INSULATING HOSE 150 MM  [404] ORDER BY THE METER	NB
104	N 040621 012200	INSULATING HOSE 180 MM  [404] ORDER BY THE METER	NB
107	A 601 078 02 45	BRANCH-OFF FITTING FROM ELECTRIC CHANGE-OVER VALVE TO SHUT-OFF VALVE	001
113	A 116 276 09 29	NOZZLE SHUT-OFF VALVE RIGHT	001
119	A 117 997 09 82	HOSE SHUT-OFF VALVE 245 MM  [404] ORDER BY THE METER	001
119	A 117 997 09 82	HOSE PRESSURE SENSOR TO INTAKE MANIFOLD 245 MM  [404] ORDER BY THE METER	001
119	A 117 997 09 82	HOSE FROM INTAKE MANIFOLD TO ELECTRIC CHANGE-OVER VALVE 245 MM  [404] ORDER BY THE METER	001
125	A 117 078 03 81	HOSE ELECTRIC CHANGE-OVER VALVE	001
131	A 117 078 05 81	HOSE FROM INTAKE MANIFOLD TO ELECTRIC CHANGE-OVER VALVE	001
140	A 002 140 84 60	VALVE CHECK VALVE	001