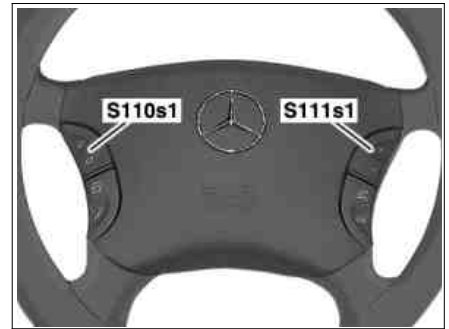


i In the event in changes to the air pressure in the tires by the driver, in the event of a wheel replacement or a tire change, the adjusted air pressure values in the TPM [RDK] control unit (N88) must be stored as specified monitoring values.

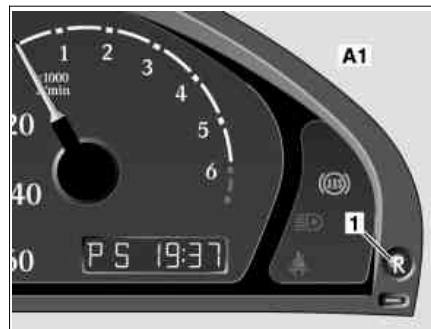
Proceed as follows:

- Switch on ignition (circuit 15 On).
i The engine can be switched on or off.
- Using the scroll forward/back button (S110s1) select the tire pressure monitor (TPM) system for the "standard display" menu in the multifunction display.
i The tire pressures or information messages due to tire pressure changes detected previously are displayed.



P82.90-2168-01

- Press the reset button (1) in the instrument cluster (A1).
i The previous display changes to the selection screen when "NO" is preselected.



P54.30-6607-01



P54.30-7063-01

- Press the "+" button on the + and - pushbutton (setting specific functions and volume control) (S111s1) on the multifunction steering wheel.
i The selection screen with the pre-selection "YES" appears for approx. 2 seconds. Pressing the other keys leads to termination of the activation process.



P82.90-2168-01



P54.30-7068-01

- Activation is confirmed by the message opposite.
i The tire pressure monitor warning lamp (A1e66) in the instrument cluster (A1), possibly activated by a previous warning message, goes out.



P54.30-7630-71

- The system message opposite appears once the engine has started.
i If activation is carried out when the engine is running, this system message appears with a time delay of approx. 30 seconds.



