

Transformer (VOGT) for Mercedes-BENZ S Class W220 instrument cluster illumination repair



Products :

We have two types of them:

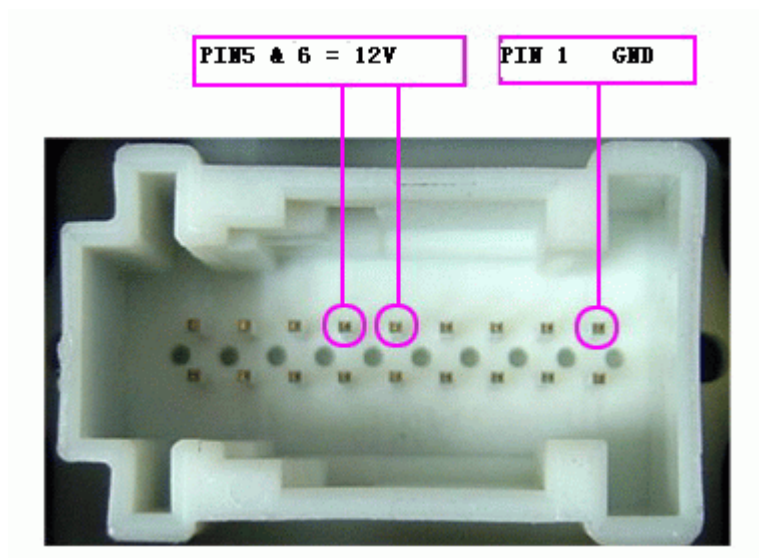
Type A: For BOSCH high voltage transformer 8 903 428 016 ,used in Mercedes S Class W220 care year **1998-2000** (dashboards with 93C66 EEPROM inside).

Type B: For BOSCH high voltage transformer 9 948 411 098, 9 948 411 025, 9 948 411 09 027. For Mercedes S Class W220 cars year **2000-2005** (dashboards with 24c04 EEPROM inside).

Feature: It isn't the original transformer, but better than the original transformer.



You need these tools for repair the instrument cluster.



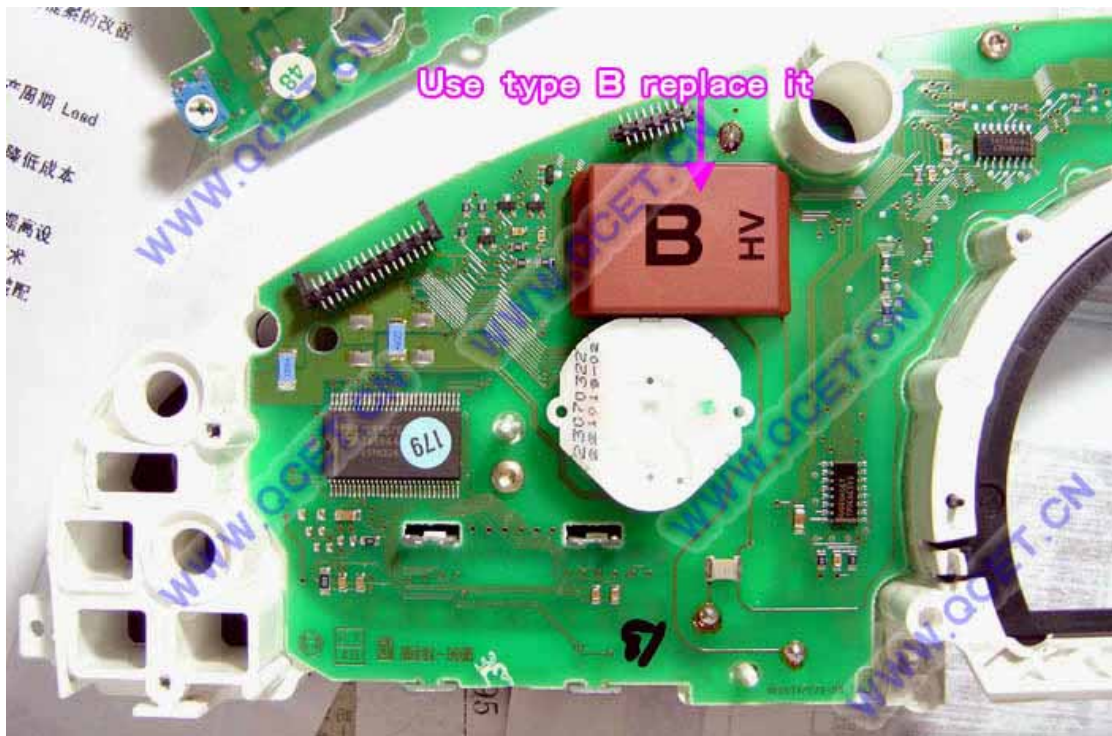
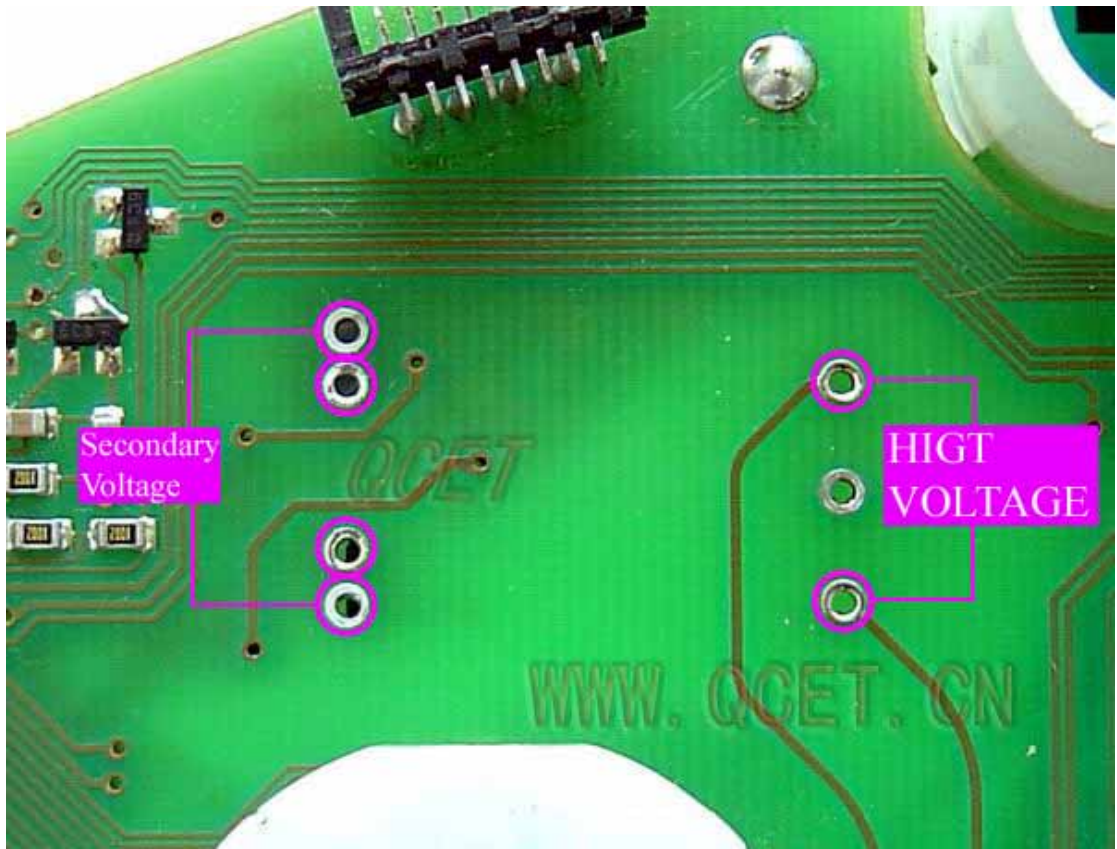
Power Supply.



The MOS-FET is here. Part number is BUZ102S.



Make the Yellow area (marked) clear before you remove the PCB



Type B for W220 S Class cars year 2000-2005.

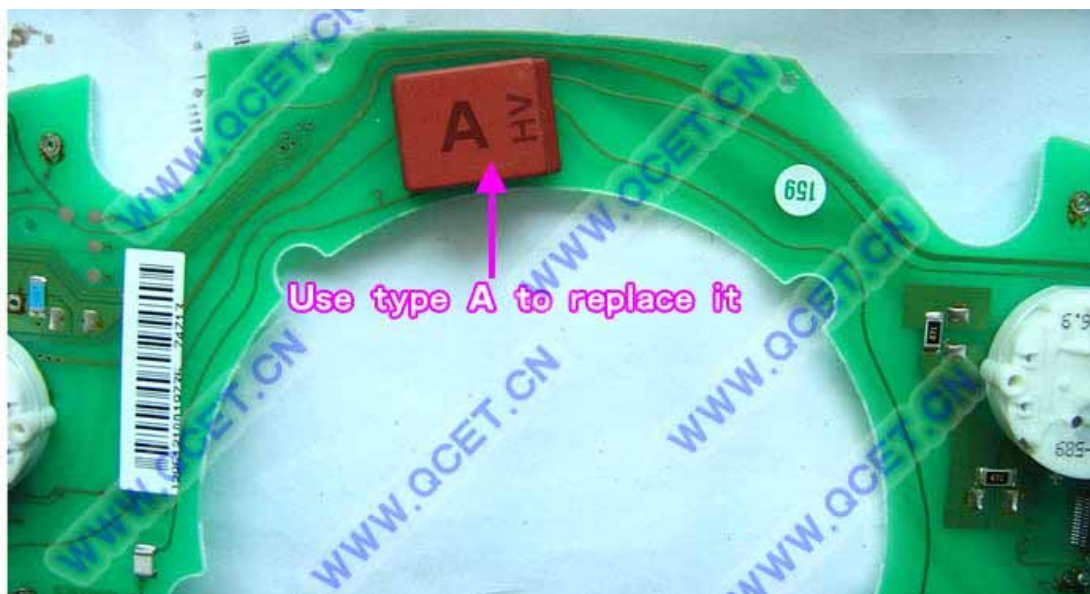
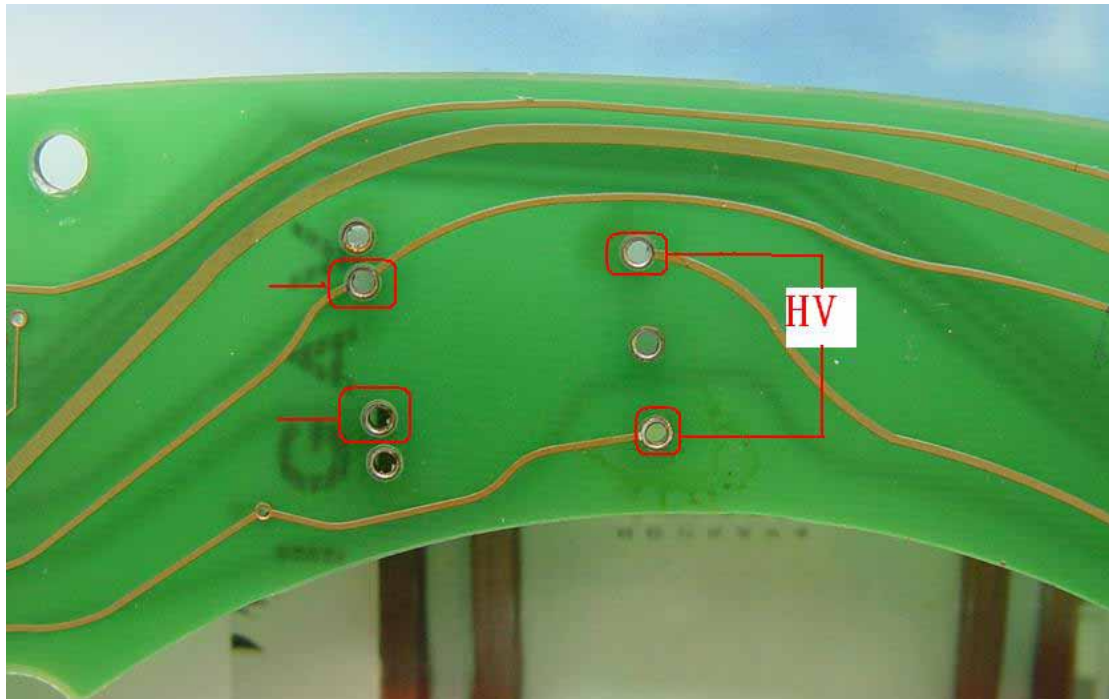


Maybe this resistor will defect. it is 4.7ohm. Replace it when it broken.

Notice: If this resistor is broken, the MOS-FET (BUZ102S) will broken too.



After finish it.



Type A for W220 S Class cars year 1998-2000.