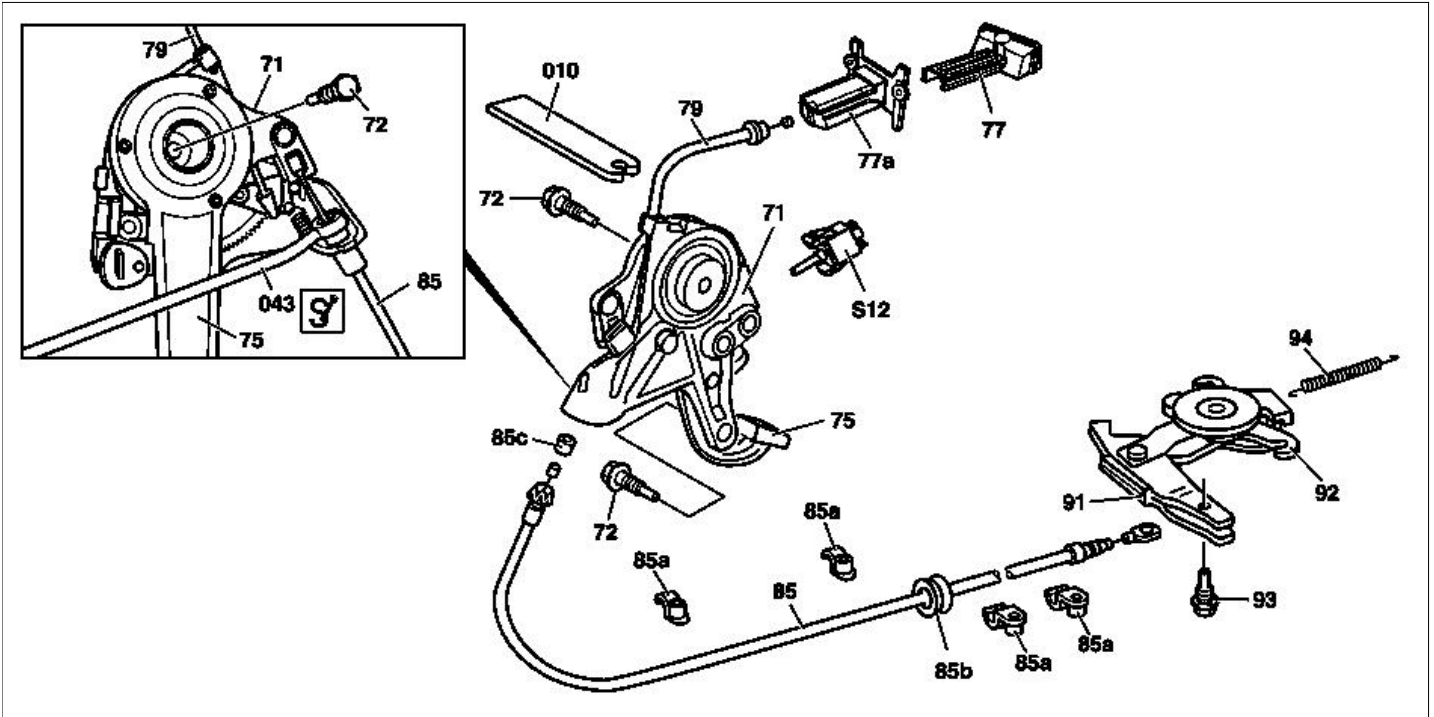


MODEL 215.373 /374 /375 /376 /378 /379, 220.025 /026 /028 /063 /065 /067 /070 /073 /074 /075 /083 /084 /087 /125 /126 /128 /165 /167 /170 /173 /174 /175 /176 /178 /179 /878



P42.20-0330-09

Modification notes

2.12.02	Notes on self-locking nuts and bolts, included for the first time		AH00.00-N-0001-01A
2.12.02	Check version of pedal assembly, added	Step 17	BT42.20-P-0510-01A

	Remove/install		
Danger!	Risk of death caused by vehicle slipping or toppling off of the lifting platform.	Align vehicle between the columns of the lifting platform and position the four support plates at the lifting platform support points specified by the vehicle manufacturer.	AS00.00-Z-0010-01A
	Notes on self-locking nuts and bolts	All models	AH00.00-N-0001-01A
1	Raise vehicle with vehicle lift		
2	Remove rear cross strut at frame floor		
3	Lower rear exhaust system	<p> Detach rear bracket between center and rear muffler at rear axle and remove bracket of rear muffler at frame floor. Detach exhaust system until heat shield below propeller shaft can be removed. Refer to Removing exhaust system complete: ↓</p> <p>Engine 113 except 113.960 in model 220.875 Engine 113.960 in model 220.875 Engine 137 in model 215.378, 220.178 Engine 137 in model 220.878 Engine 275 Engine 613 Engine 648 Engine 628</p>	<p>AR49.10-P-7000AA AR49.10-P-7000MP AR49.10-P-7000L AR49.10-P-7000MPL AR49.10-P-7000IM AR49.10-P-7000M AR49.10-P-7000MB</p>
4	Remove heat shield below propeller shaft		
5.1	Preload automatic slack adjuster (92)	Model 215 except 215.379, 220 except 220.179	AR42.20-P-0520-01A
5.2	Release cable slack adjuster	<p>Model 215.379, 220.179</p> <p> Self-locking bolt, brake cable to rear wheel carrier</p> <p> Snap-release tool</p>	<p>AR42.20-P-0520-03IM *BA42.20-P-1002-01A *129589116300</p>

6	Detach retracting spring (94)		
7	Detach brake cable (85) at intermediate lever (91) by unscrewing bolt (93).	Model 215 except 215.379, 220 except 220.179: ↓ Bolt, brake cable to automatic cable slack adjuster Model 215.379, 220.179: ↓ Bolt, brake cable to cable slack adjuster	*BA42.20-P-1004-01A *BA42.20-P-1005-01A
8	Remove left cover below dashboard	Model 215 Model 220	AR68.10-P-1500N AR68.10-P-1500M
9	Remove accelerator pedal		AR30.12-P-1321I
10	Remove floor covering in driver footwell		AR68.20-P-2050M
11	Detach brake cable (85) from parking brake pedal (75)	Use snap-release tool (043). Installation: Check that the rubber ring (85c) is correctly seated on the nipple. Snap-release tool	*129589116300
12.1	Detach lower engine compartment paneling	Engine 112, 113, 137, 275 Loosen heat shield at transmission until brake cable (85) can be threaded through.	AR61.20-P-1105M
12.2	Remove bottom sections of soundproofing	Engine 613, 628, 648 Loosen heat shield at transmission until brake cable (85) can be threaded through.	AR94.30-P-5300M
13	Unclip brake cable (85) from retaining clips (85a) in driver footwell and outside on the frame floor assembly and pull out through the rubber grommet (85b) on the transmission tunnel	Installation: Replace retaining clips (85a).	
14	Detach brake cable (85) from frame floor	Use snap-release tool (043). Snap-release tool	*129589116300
15	Install in the reverse order		
16.1	Slacken automatic cable slack adjuster (92)	Model 215 except 215.379, 220 except 220.179	AR42.20-P-0520-02A
17 	Check version of pedal assembly (71) Parking brake pedal assembly modified		BT42.20-P-0510-01A
18	Operate parking brake pedal (75) several times and check pedal travel of parking brake pedal (75)	If the pedal travel is not within the tolerance range: ↓ Adjust parking brake Model 215 except 215.379, 220 except 220.179 Model 215.379, 220.179 Actuating force on parking brake pedal Notches through which the parking brake pedal must be depressed	AR42.20-P-0540I AR42.20-P-0540IM *BE42.20-P-1001-01C *BE42.20-P-1002-01C

Adjustment values for parking brake

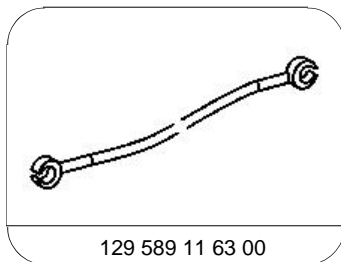
Number	Designation		Model 215, Pedal assembly with pulled notch	Model 215, Pedal assembly with pushed notch
BE42.20-P-1001-01C	Actuating force on parking brake pedal	O	170 (-50/+70)	170 (-50/+70)
BE42.20-P-1002-01C	Notches through which the parking brake pedal must be depressed	Quantity	1	5
		See fig.	BT42.20-P-0510-01A	BT42.20-P-0510-01A

Adjustment values for parking brake

Number	Designation		Model 220, Pedal assembly with pulled notch	Model 220, Pedal assembly with pushed notch
BE42.20-P-1001-01C	Actuating force on parking brake pedal	O	170 (-50/+70)	170 (-50/+70)
BE42.20-P-1002-01C	Notches through which the parking brake pedal must be depressed	Quantity	1	5
		See fig.	BT42.20-P-0510-01 A	BT42.20-P-0510-01 A

Nm Parking brake

Number	Designation		Model 215	Model 220
BA42.20-P-1002-01A	Self-locking bolt, brake cable at rear wheel carrier	Nm	-	12
BA42.20-P-1004-01A	Bolt, brake cable at automatic cable slack adjuster	Nm	12	12
BA42.20-P-1005-01A	Bolt, brake cable at cable slack adjuster	Nm	12	12



Snap-release tool