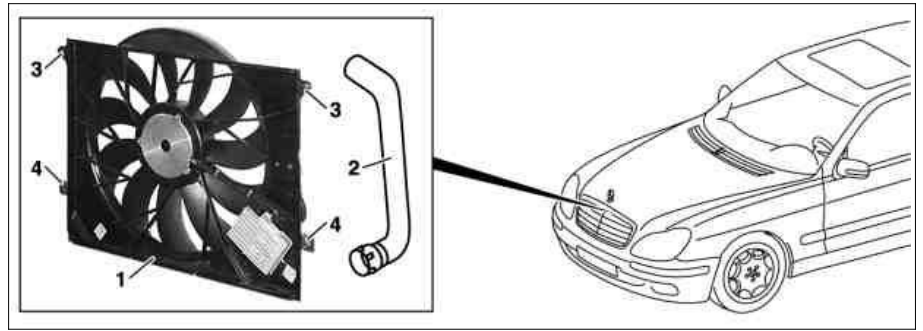


ENGINE 137 in MODEL 215, 220
ENGINE 275.950 in MODEL 215.376, 220.176
ENGINE 275.951 in MODEL 230.476
ENGINE 275.981 in MODEL 230.479
ENGINE 275.954 in MODEL 230.477

Shown on model 220

- 1 Fan shroud
- 2 Coolant line
- 3 Fastening shackles
- 4 Radiator supports



P20.40-2038-04

Modification notes

12.8.02	Fastening of ATF line modified in coolant line.	Step 9	
---------	---	--------	--

		Remove/install	
1		Disconnect ground line of battery Notes on battery	Model 230.479 AR54.10-P-0003R AH54.10-P-0001-01A
2		Remove front engine cover	Model 215.376, 220.176, 230.476 /477 Model 215.379, 220.179, 230.479 AR01.10-P-2405LA AR01.10-P-2405IM
3		Detach plastic cover over RH lamp unit	Model 230.479
4		Remove radiator crossmember	Model 230.479
5		Unclip coolant hose from top of fan shroud (1)	Model 230.479
6		Remove left and right engine intake air ducts	
7		Detach the clamps at top of radiator for fastening the fan shroud (1)	Model 230.479
8		Unscrew bolts from mounting brackets (3) of fan shroud (1)	
9		Disconnect electrical connector from fan shroud (1) and detach cable tie	
10		Remove automatic oil line	Before opening the automatic transmission or its components, the ambiance of the separation point has to be cleaned thoroughly. Even the smallest particles of dirt, introduced into the hydraulic components, can result in malfunctions and a total failure of the automatic transmission. Only remove at top right of radiator. Seal ATF lines so that no ATF flows out.
			*BA20.20-P-1001-01A
11		Detach coolant line bracket (2) under the fan shroud (1)	Model 215, 220
12		Unhook fan shroud (1) from radiator supports (4) and remove upward	Installation: Check that the fan shroud (1) is correctly seated in the radiator supports (4).
13		Install in the reverse order	
14		Check oil level in automatic transmission, correct if necessary	AR27.00-P-0100AC

Radiator, coolant hoses

Number	Designation		Engine 137.970	Engine 275
BA20.20-P-1001-01A	Union nut, automatic transmission oil line to radiator	Nm	20	25