

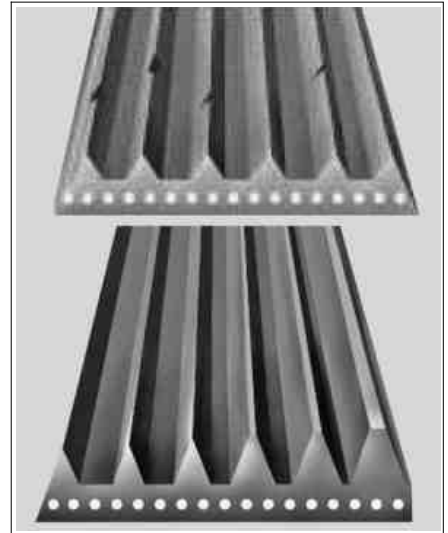
ENGINE 102, 103, 104, 111, 112, 113, 119, 120, 133, 137, 152, 155, 156, 157, 159, 166, 177, 178, 266, 270, 271, 272, 273, 274, 275, 276, 277, 278, 279, 281, 285, 602, 603, 604, 605, 606, 607, 611, 612, 613, 626, 628, 629, 640, 642, 646, 647, 648, 651, 668

⚠ In all cases of damage, the poly-V belt may **not** continue to be used.

Poly-V belts and components causing damage must be replaced subject to separate repair order.
Consequential damage can otherwise occur.

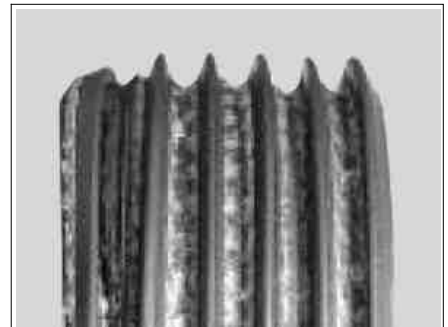
Flanks of the poly-V belts worn

i Poly-V-belts exhibit traces of wear or they are pointed instead of trapezoidal. Look out for non-aligned and damaged belt pulleys.



P13.22-2174-02

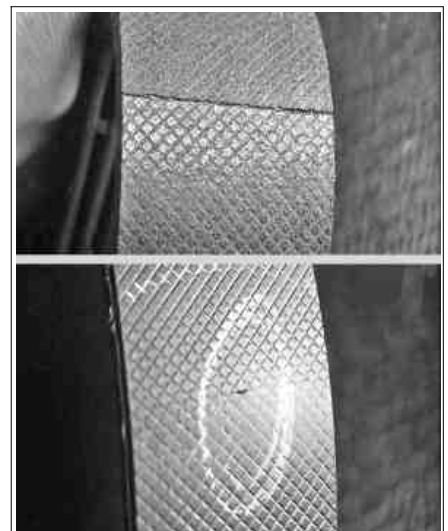
Tensile cord (brighter points) visible in base of poly-V belt



P13.22-2175-01

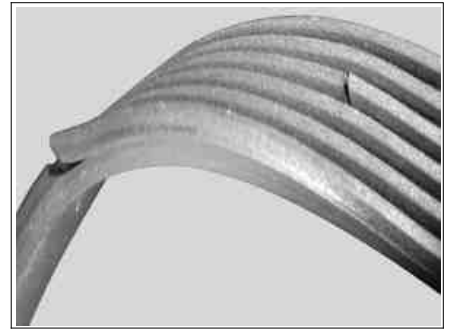
Rear of belt damaged

i Surface layer exhibits transverse or longitudinal cracks.



P13.22-2176-02

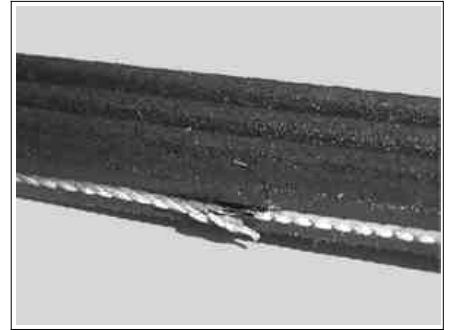
Poly-V belt detached from poly-V belt base



P13.22-2177-01

Fraying of outer cords

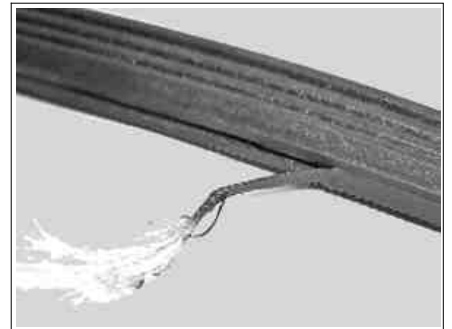
i Pay attention to belt pulleys and guide pulleys.



P13.22-2178-01

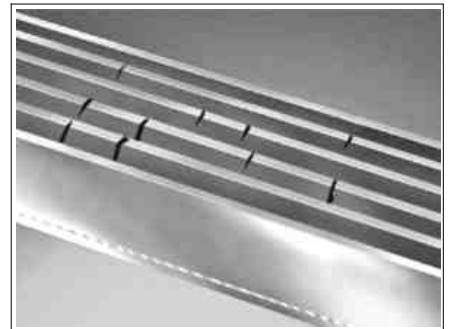
Cord torn out at the side

i Pay attention to belt pulleys and guide pulleys.



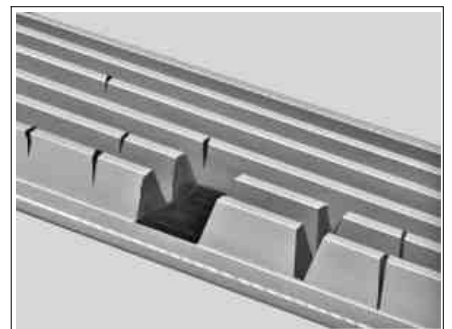
P13.22-2179-01

Transverse cracks in several poly-V



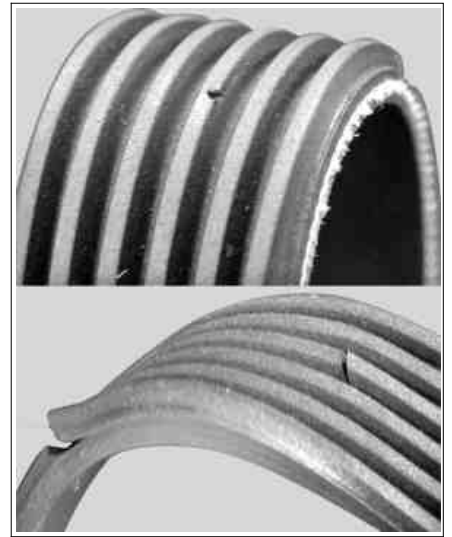
P13.22-2180-01

Chippings on poly-V belt



P13.22-2181-01

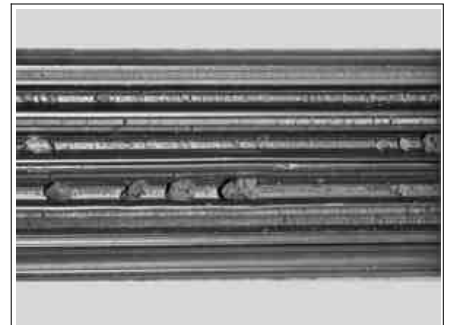
Individual transverse cracks in the poly-V belt



P13.22-2182-02

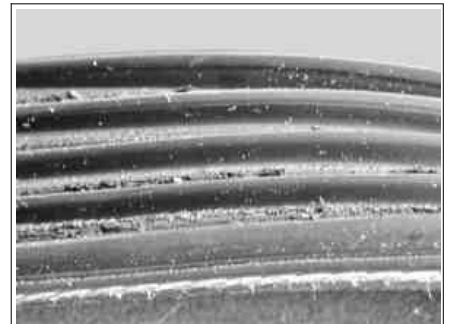
Dirt or stones embedded in ribs

i Pay attention to belt pulleys and guide pulleys.



P13.22-2183-01

Heavy wear and deposits and lumps of rubber in base of rib

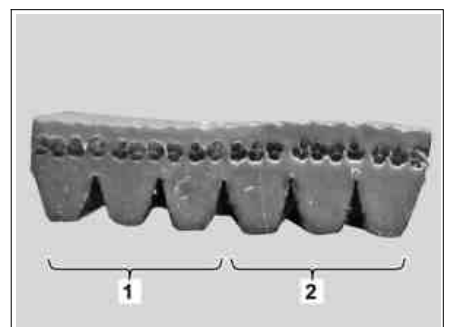


P13.22-2184-01

Swelling through contact with engine oil, coolant, cold cleaning solvent etc.

i Increase in width ≥ 0.7 mm (0.03 inch). Look out for leaks in the major assemblies.

- 1 Without exposure to engine oil, coolant, cold cleaning solvent etc.
- 2 With exposure to engine oil, coolant, cold cleaning solvent etc.



P13.22-2185-01