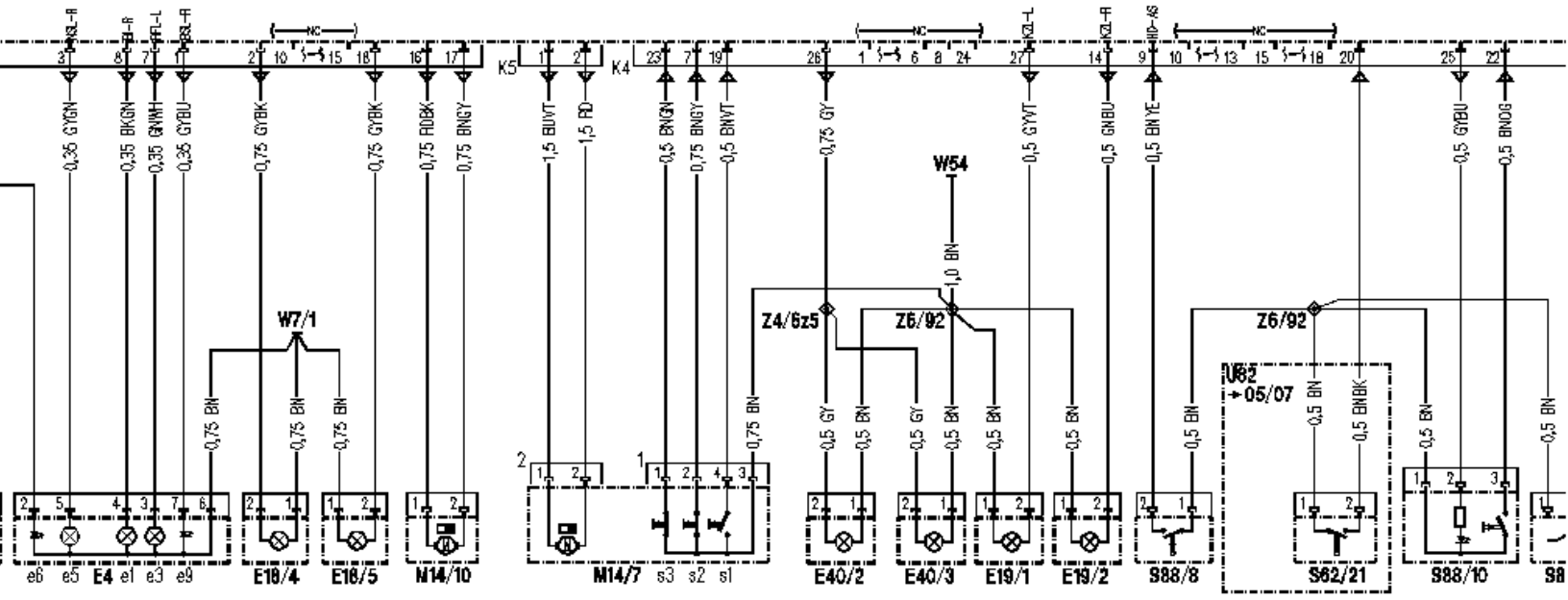
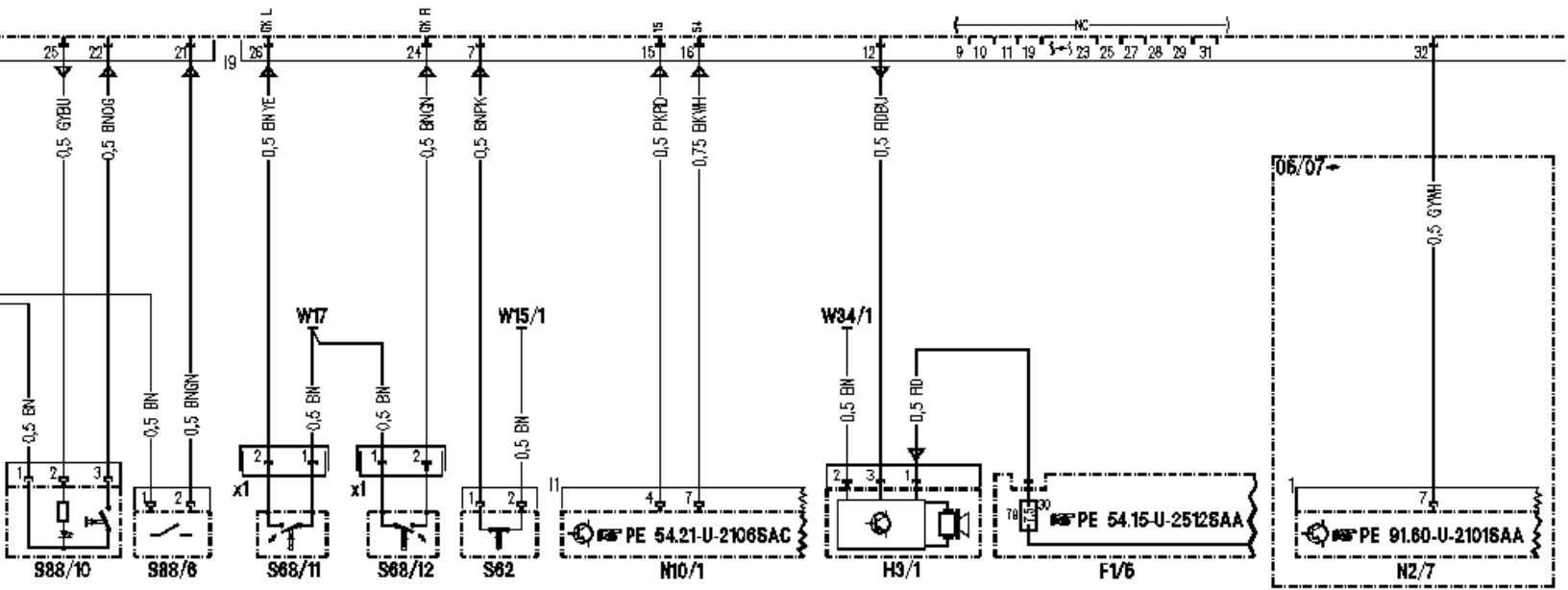


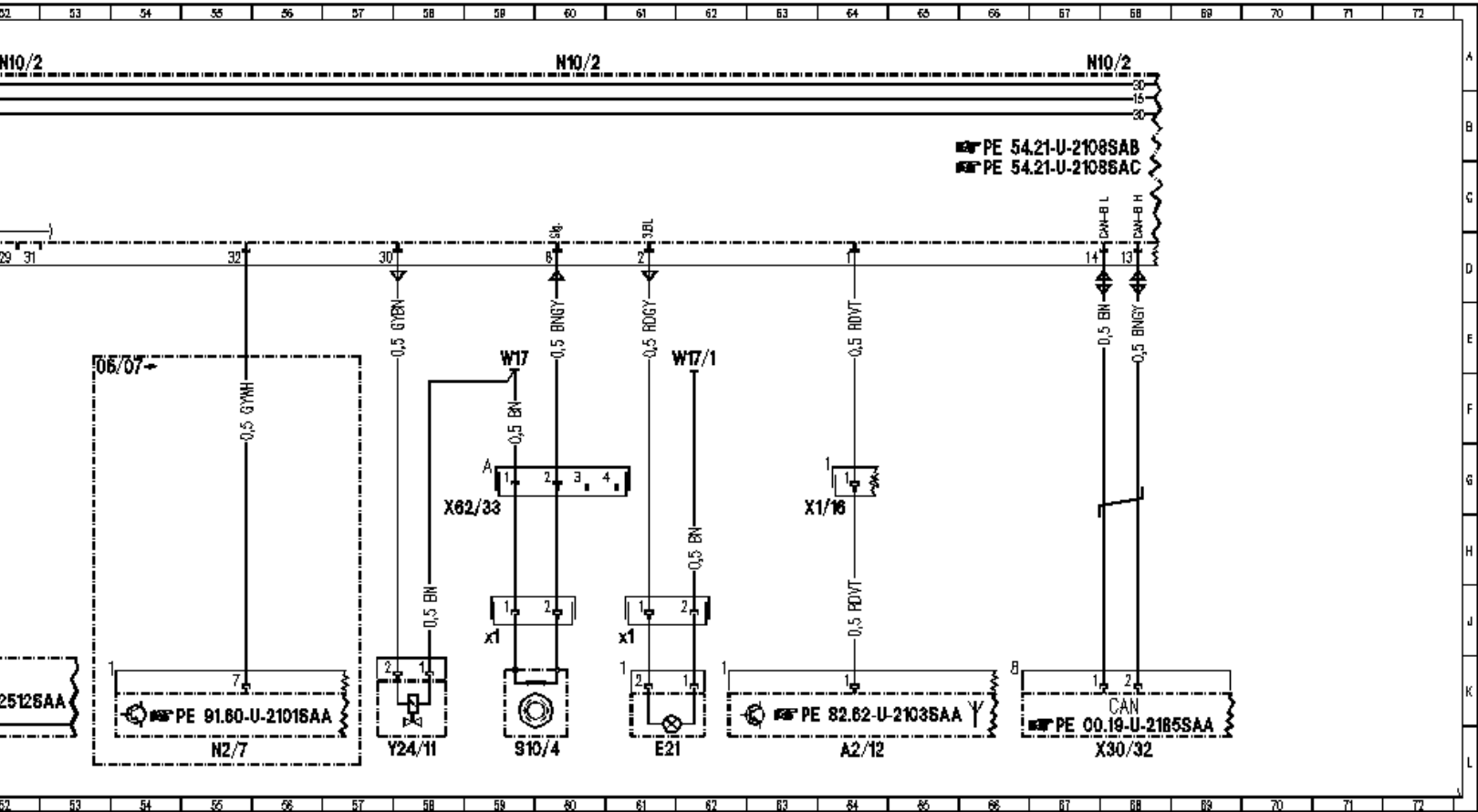
N10/2

N10/2

N10/2



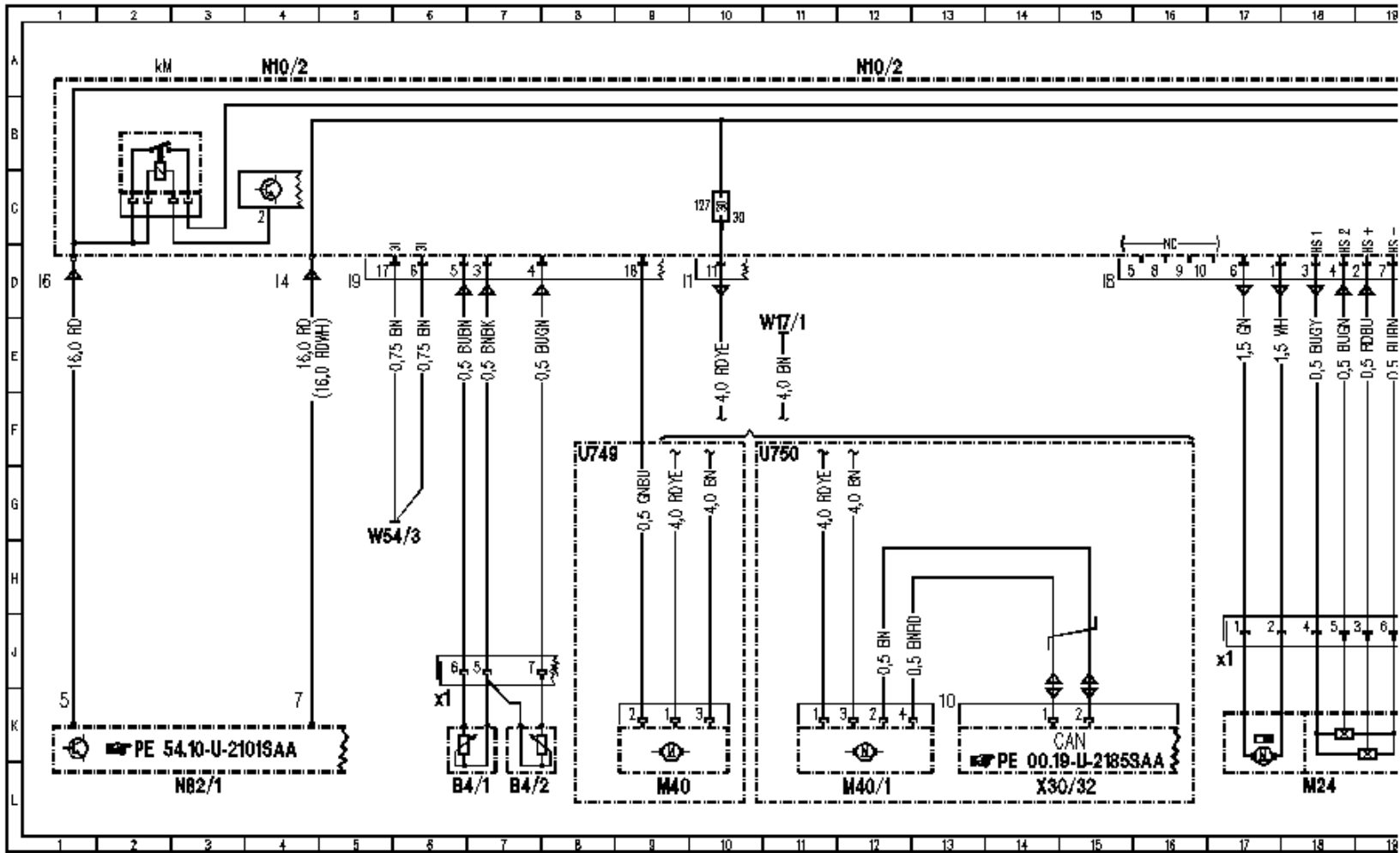




Item	Designation
<u>A2/12</u>	Rear window antenna amplifier module
<u>E3</u>	Left taillamp
<u>E3e1</u>	Left turn signal lamp
<u>E3e3</u>	Left backup lamp
<u>E3e5</u>	Left rear fog lamp
<u>E3e6</u>	Left rear side marker lamp (USA)
<u>E3e9</u>	Left stop lamp, taillamp and parking lamp
<u>E4</u>	Right taillamp
<u>E4e1</u>	Right turn signal lamp
<u>E4e3</u>	Right backup lamp
<u>E4e5</u>	Right rear fog lamp
<u>E4e6</u>	Right rear side marker lamp (USA)
<u>E4e9</u>	Right stop lamp, taillamp and parking lamp
<u>E18/4</u>	Right trunk lamp
<u>E18/5</u>	Left trunk lamp
<u>E19/1</u>	Left license plate lamp
<u>E19/2</u>	Right license plate lamp
<u>E21</u>	Center high-mounted stop lamp
<u>E21x1</u>	Center high-mounted stop lamp connector
<u>E40/2</u>	Left trunk lid ambient and warning lamp
<u>E40/3</u>	Right trunk lid ambient and warning lamp
<u>F1/6</u>	Right instrument panel fuse box
<u>F1/6f79</u>	Fuse 79
<u>H3/1</u>	Alarm signal siren
<u>M14/7</u>	Trunk lid CL [ZV] motor
<u>M14/7s1</u>	Trunk lid gearing microswitch 2
<u>M14/7s2</u>	Trunk lid lock pawl microswitch
<u>M14/7s3</u>	Trunk lid rotary tumbler microswitch
<u>M14/10</u>	Fuel filler flap CL motor
<u>N2/7</u>	Restraint systems control module
<u>N10/1</u>	Front SAM control module with fuse and relay module
<u>N10/2</u>	Rear SAM control module with fuse and relay module

<u>N10/2f137</u>	Fuse 137
<u>N10/2f138</u>	Fuse 138
<u>N10/2kM</u>	Circuit 15 relay
<u>N10/2kN</u>	Circuit 15R relay

<u>N82/1</u>	Vehicle power supply control unit
<u>N123/4</u>	Emergency call system control unit
<u>S10/4</u>	Right rear brake pad contact sensor
<u>S10/4x1</u>	Right rear brake pad contact sensor connector
<u>S62</u>	ATA [EDW] hood switch
<u>S62/21</u>	Trunk lid KEYLESS-GO button
<u>S68/11</u>	Left rear seat belt buckle switch
<u>S68/11x1</u>	Left rear seat belt buckle switch connector
<u>S68/12</u>	Right rear seat belt buckle switch
<u>S68/12x1</u>	Right rear seat belt buckle switch connector
<u>S88/6</u>	Trunk lid contact switch
<u>S88/8</u>	Trunk lid external operation switch
<u>S88/10</u>	Trunk lid emergency release switch
<u>U82</u>	Valid for KEYLESS GO
<u>U563</u>	Valid for rear entertainment (DVD)
<u>U899</u>	Valid for backup camera
<u>W7/1</u>	Ground (right taillamp in trunk)
<u>W15/1</u>	Ground (right footwell)
<u>W17</u>	Ground (right rear seat)
<u>W17/1</u>	Ground (left rear seat)
<u>W34/1</u>	Ground (electronics - left footwell)
<u>W54</u>	Ground, wheelhousing rear right
<u>X1/16</u>	Roof antenna connector
<u>X30/32</u>	Left interior CAN/FFS [RBA] voltage distributor connector
<u>X60</u>	Volume control intermediate connector
<u>X62/33</u>	Right rear axle electrical distributor connector
<u>Y24/11</u>	Rear head restraints valve block
<u>Z4/6z5</u>	Luggage compartment lamp circuit 30 connector sleeve
<u>Z6/92</u>	Trunk lid ground connector sleeve
<u>Z38</u>	Reversing lamp connector sleeve



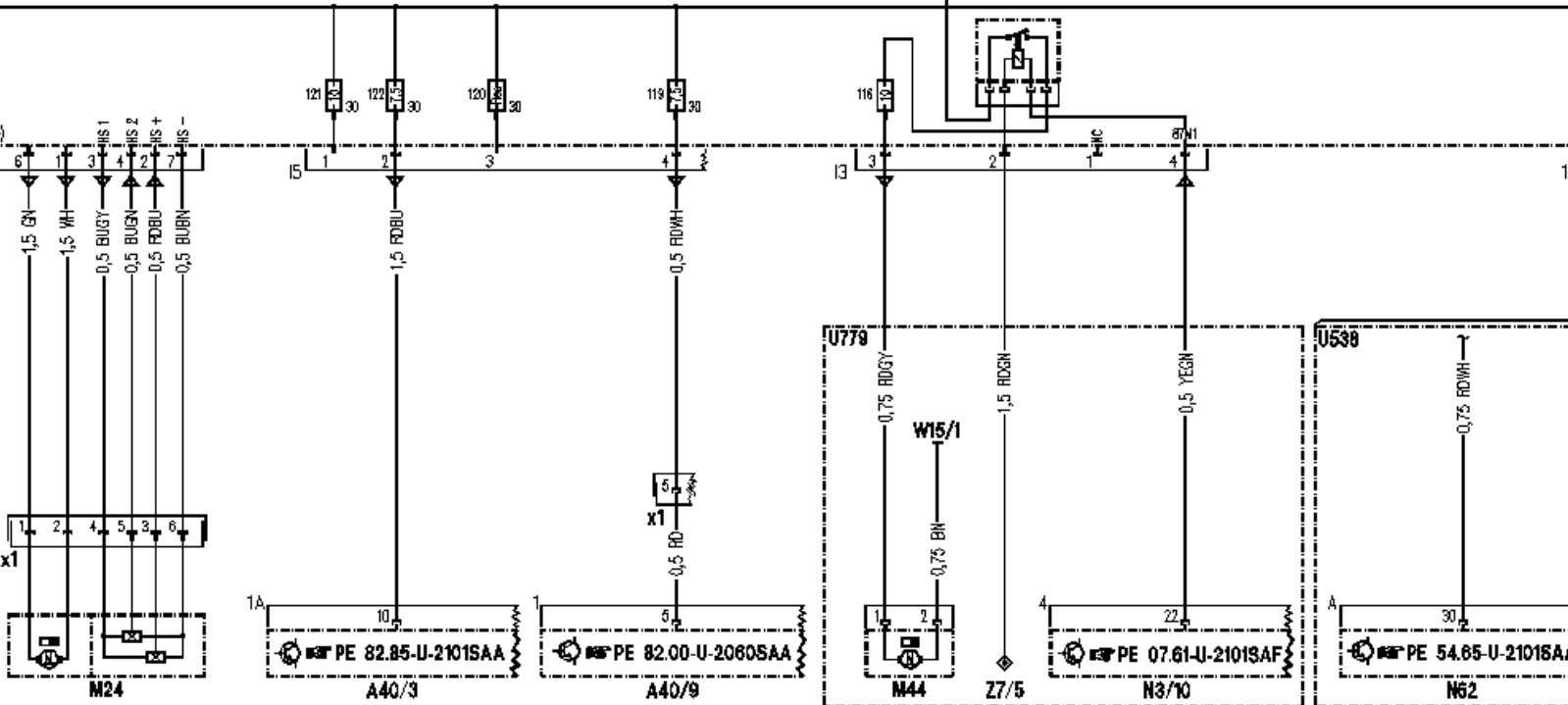
17 18 19 20 21 22 23 24 25 26 27 28 29 30 31 32 33 34 35 36 37

N10/2

N10/2

kQ

N10/2

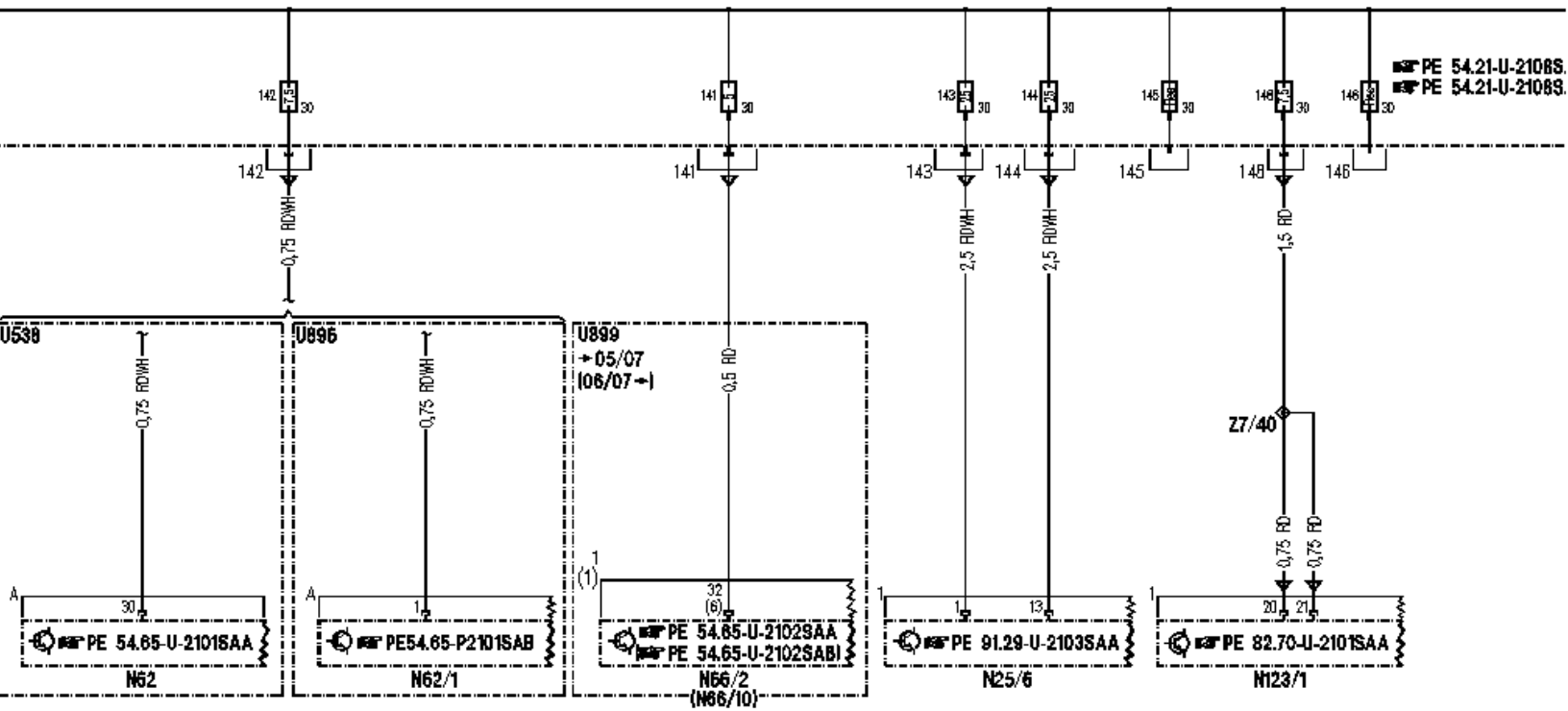


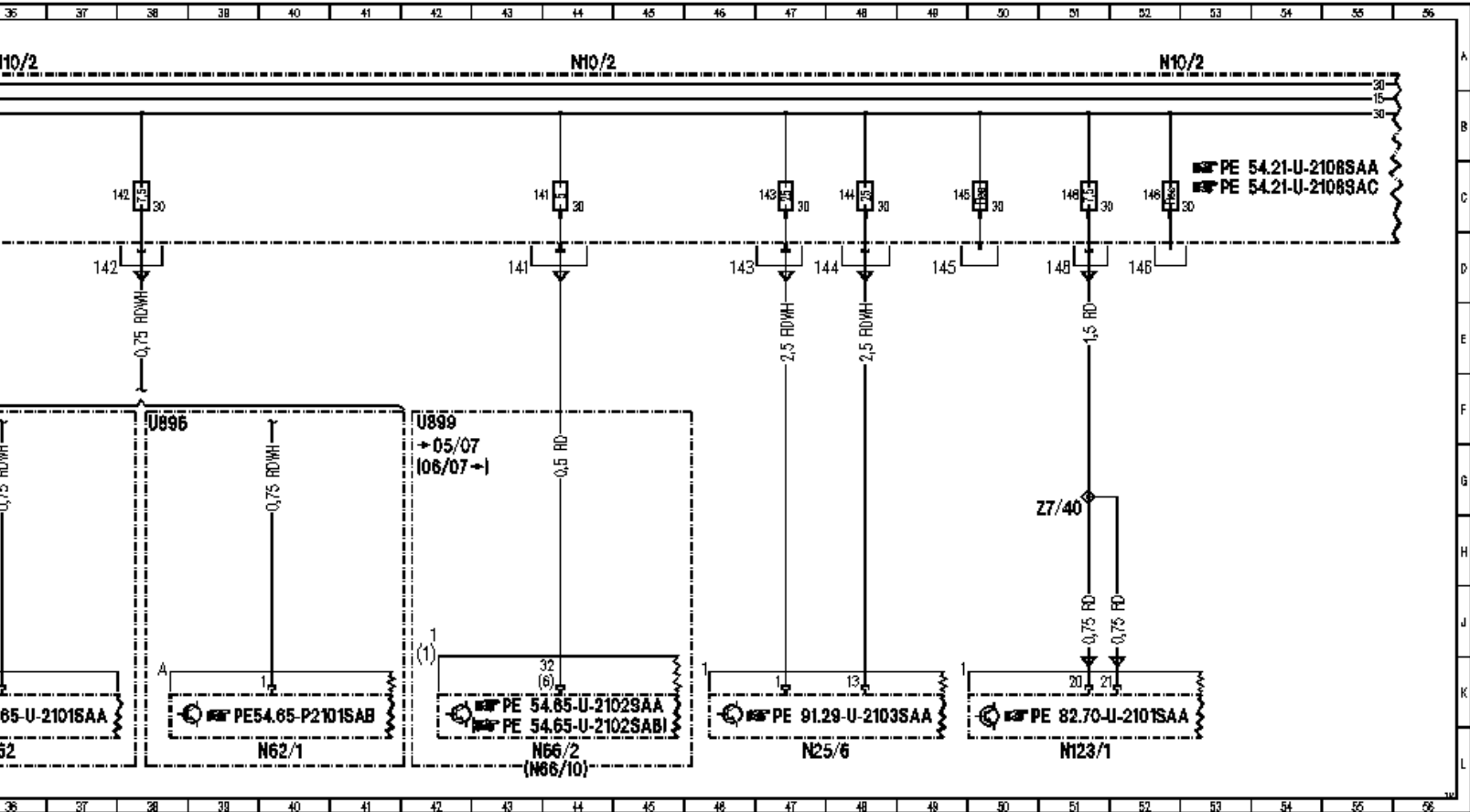
17 18 19 20 21 22 23 24 25 26 27 28 29 30 31 32 33 34 35 36 37

N10/2

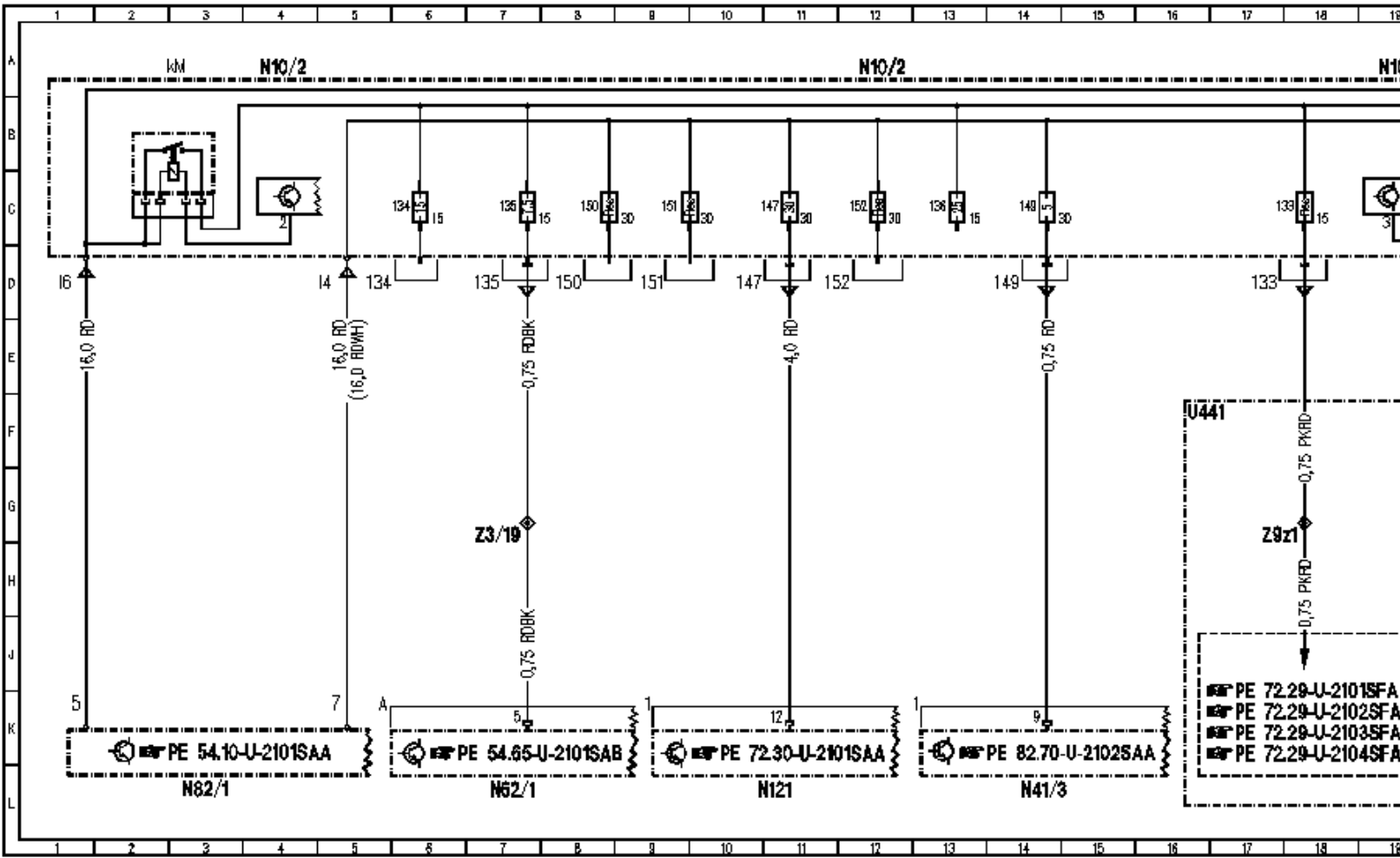
N10/2

N10/2

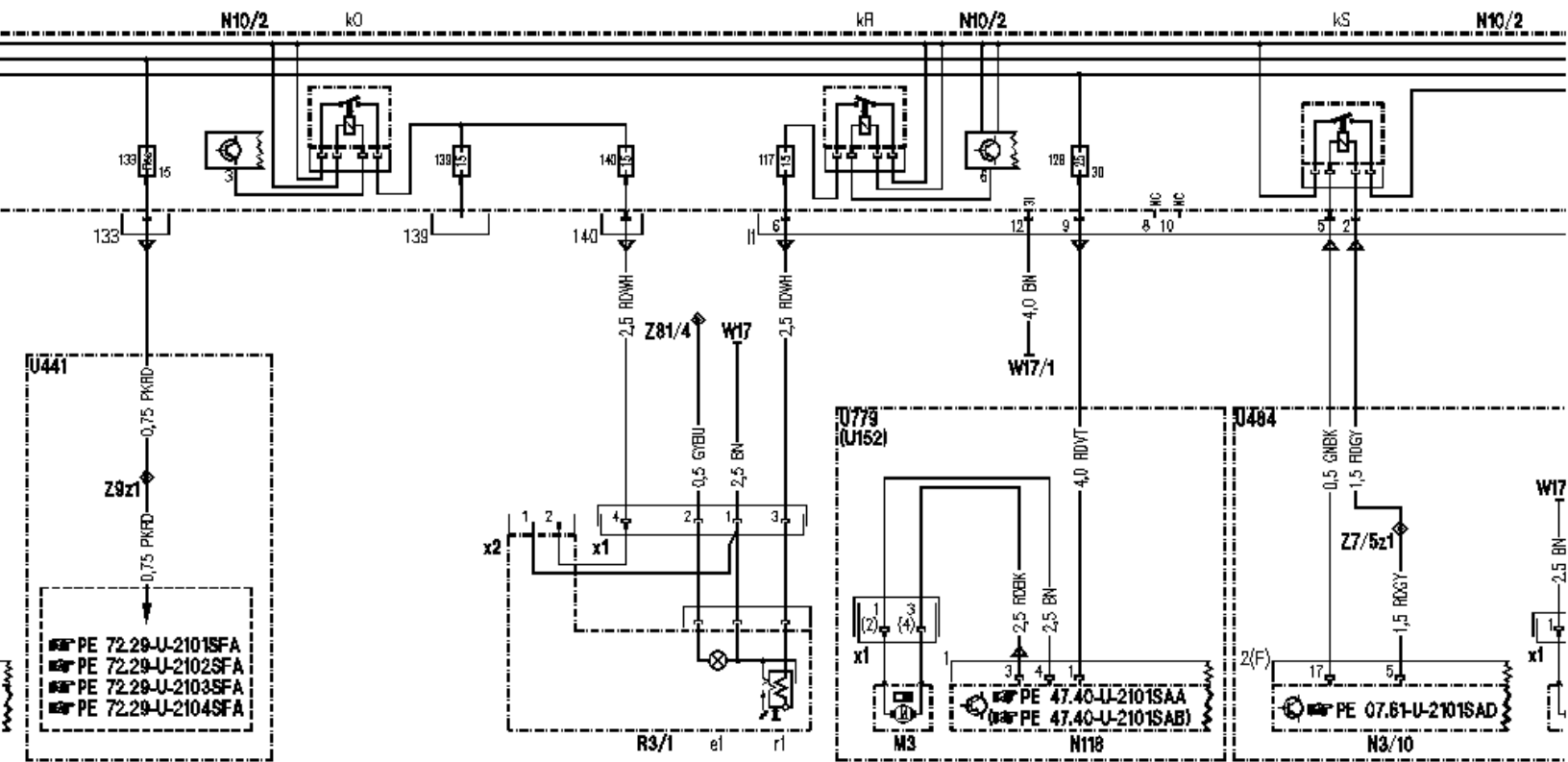




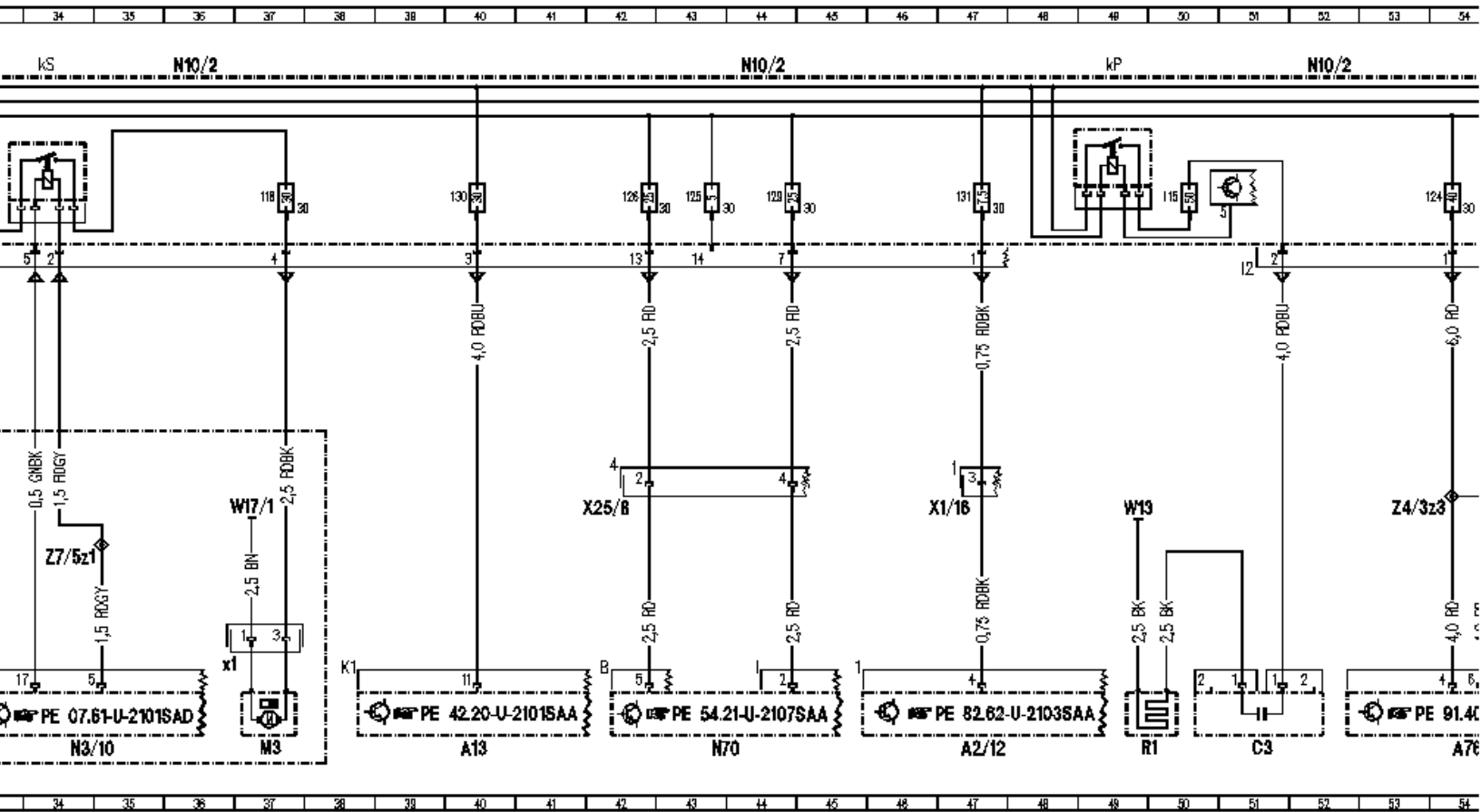
<u>Item</u>	<u>Designation</u>
<u>A40/3</u>	COMAND control unit
<u>A40/9</u>	Front central operating unit
<u>A40/9x1</u>	Front central operating unit connector
<u>B4/1</u>	Left fuel level sensor
<u>B4/1x1</u>	Left tank half fuel level sensor connector
<u>B4/2</u>	Right fuel level sensor
<u>M24</u>	Rear window blind motor
<u>M24x1</u>	Rear window blind motor connector
<u>M40</u>	Multicontour seat pneumatic pump
<u>M40/1</u>	Pneumatic pump for dynamic seat control
<u>M44</u>	Charge air cooler circulation pump
<u>N3/10</u>	ME-SFI [ME] control module
<u>N10/2</u>	Rear SAM control module with fuse and relay module
<u>N10/2f116</u>	Fuse 116
<u>N10/2f119</u>	Fuse 119
<u>N10/2f120</u>	Fuse 120
<u>N10/2f121</u>	Fuse 121
<u>N10/2f122</u>	Fuse 122
<u>N10/2f127</u>	Fuse 127
<u>N10/2f141</u>	Fuse 141
<u>N10/2f142</u>	Fuse 142
<u>N10/2f143</u>	Fuse 143
<u>N10/2f144</u>	Fuse 144
<u>N10/2f145</u>	Fuse 145
<u>N10/2f146</u>	Fuse 146
<u>N10/2f148</u>	Fuse 148
<u>N10/2kM</u>	Circuit 15 relay
<u>N10/2kQ</u>	Circulating pump relay
<u>N25/6</u>	Rear seats control module
<u>N62</u>	PTS control module
<u>N62/1</u>	Radar sensors control unit (SGR)
<u>N66/2</u>	Reverse camera control module
<u>N66/10</u>	Backup camera voltage supply module
<u>N82/1</u>	Vehicle power supply control unit
<u>N123/1</u>	Universal Portable CTEL Interface (UPCI [UHI]) control module
<u>U538</u>	Valid for Parktronic System
<u>U749</u>	Valid for multicontour seat (MCS [MKS])
<u>U750</u>	Valid for dynamic seat (DS [FDS])
<u>U779</u>	Valid for engine 275
<u>U896</u>	Valid for City Assist System
<u>U899</u>	Valid for backup camera
<u>W15/1</u>	Ground (right footwell)
<u>W17/1</u>	Ground (left rear seat)
<u>W54/3</u>	Ground (left rear wheelhouse)
<u>X30/32</u>	Left interior CAN/FFS [RBA] voltage distributor connector
<u>Z7/5</u>	Circuit 87 connector sleeve
<u>Z7/40</u>	Circuit 30 connector sleeve

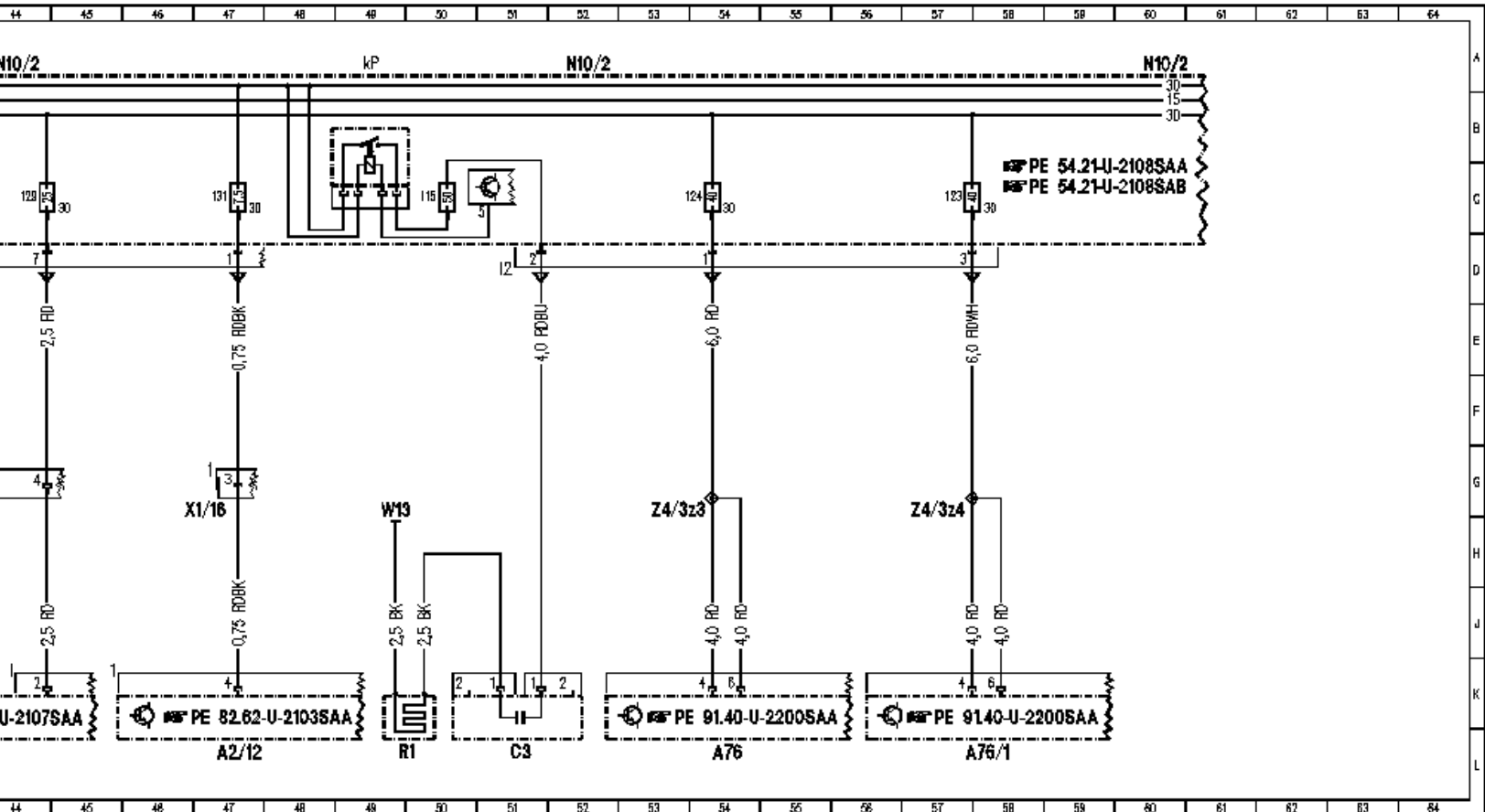


16 17 18 19 20 21 22 23 24 25 26 27 28 28 30 31 32 33 34 35 36



16 17 18 18 20 21 22 23 24 25 26 27 28 28 30 31 32 33 34 35 36





Item	Designation
<u>A2/12</u>	Rear window antenna amplifier module
<u>A13</u>	Electric parking brake control unit
<u>A76</u>	Left front reversible emergency tensioning retractor
<u>A76/1</u>	Right front reversible emergency tensioning retractor
<u>C3</u>	Electrolytic capacitor (rear window noise suppressor)
<u>M3</u>	Fuel pump (FP)
<u>M3x1</u>	Fuel pump connector
<u>N3/10</u>	ME-SFI [ME] control module
<u>N10/2</u>	Rear SAM control module with fuse and relay module

<u>N10/2f115</u>	Fuse 115
<u>N10/2f117</u>	Fuse 117
<u>N10/2f118</u>	Fuse 118
<u>N10/2f123</u>	Fuse 123
<u>N10/2f124</u>	Fuse 124
<u>N10/2f125</u>	Fuse 125
<u>N10/2f126</u>	Fuse 126
<u>N10/2f128</u>	Fuse 128
<u>N10/2f129</u>	Fuse 129
<u>N10/2f130</u>	Fuse 130
<u>N10/2f131</u>	Fuse 131
<u>N10/2f133</u>	Fuse 133
<u>N10/2f134</u>	Fuse 134
<u>N10/2f135</u>	Fuse 135
<u>N10/2f136</u>	Fuse 136
<u>N10/2f139</u>	Fuse 139
<u>N10/2f140</u>	Fuse 140
<u>N10/2f147</u>	Fuse 147
<u>N10/2f149</u>	Fuse 149
<u>N10/2f150</u>	Fuse 150
<u>N10/2f151</u>	Fuse 151
<u>N10/2f152</u>	Fuse 152
<u>N10/2kM</u>	Circuit 15 relay
<u>N10/2kO</u>	Power outlet relay
<u>N10/2kP</u>	Rear window defroster relay
<u>N10/2kR</u>	Cigar lighter relay
<u>N10/2kS</u>	Fuel pump relay module

<u>N41/3</u>	Voice control system (VCS [SBS]) control unit
<u>N62/1</u>	Radar sensors control unit (SGR)
<u>N70</u>	Overhead control panel control module
<u>N82/1</u>	Vehicle power supply control unit
<u>N118</u>	Fuel pump control module
<u>N121</u>	TLC [HDS] control module
<u>R1</u>	Heated rear window
<u>R3/1</u>	Rear cigar lighter
<u>R3/1e1</u>	Illumination
<u>R3/1r1</u>	Heating element
<u>R3/1x1</u>	Rear cigar lighter (with ashtray illumination) connector
<u>R3/1x2</u>	12V socket
<u>U152</u>	Valid for engine 156
<u>U441</u>	Valid for special protection
<u>U484</u>	Valid for M273 ME
<u>U779</u>	Valid for engine 275
<u>W13</u>	Ground (rear window defroster)
<u>W17</u>	Ground (right rear seat)
<u>W17/1</u>	Ground (left rear seat)
<u>X1/16</u>	Roof antenna connector
<u>X25/8</u>	Overhead control panel and FFS [RBA] connector
<u>Z3/19</u>	Circuit 15 connector sleeve (fused) (PTS)
<u>Z4/3z3</u>	Circuit 30 connector sleeve
<u>Z4/3z4</u>	Circuit 30 connector sleeve
<u>Z7/5z1</u>	Circuit 87 connector sleeve
<u>Z9z1</u>	Connector sleeve 1
<u>Z81/4</u>	Circuit 58d in FSS [RBA] connector sleeve