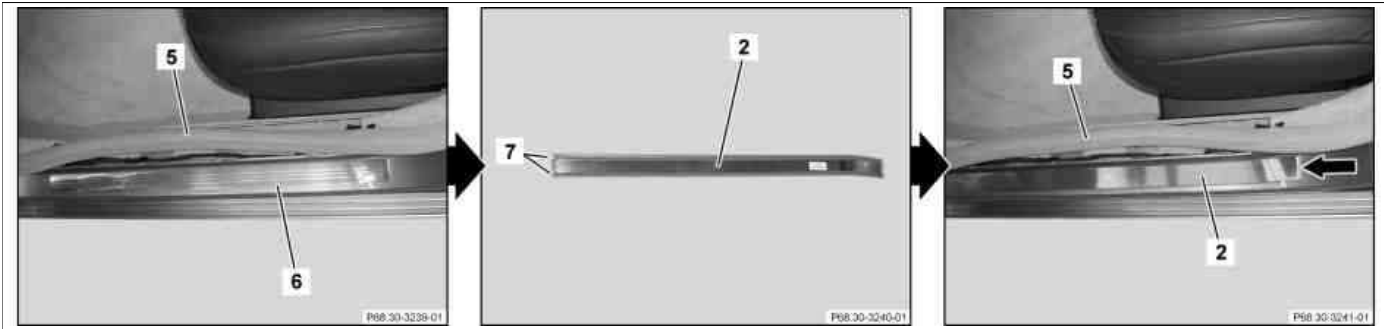


Repair materials

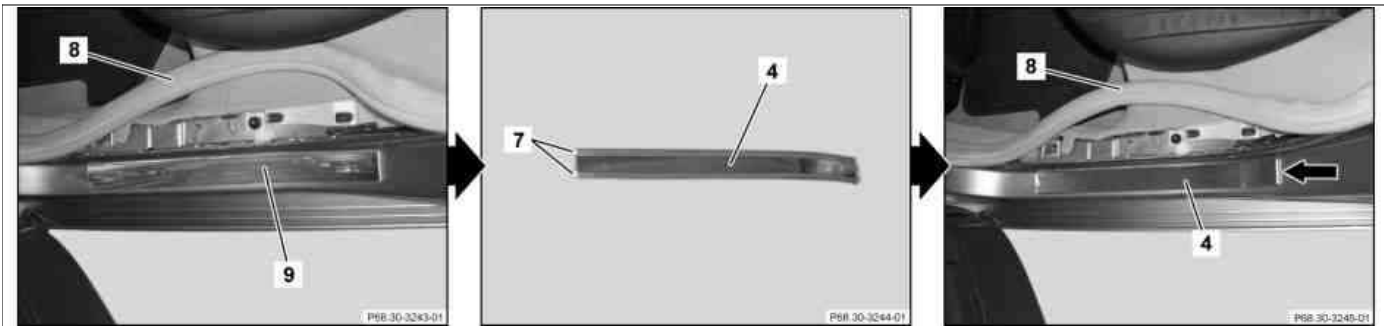
Number	Designation	Order number
BR00.45-Z-1025-04A	Cleaner	A 005 989 19 71



P68.30-3238-07

i The following steps are shown on the left side of the vehicle. Installation on the right side of the vehicle is performed correspondingly.

- 1 Detach edge guard (5) in area of front door sill.
- 2 Clean surface of standard outer door front sill (6) with cleaning agent.
 - ⚠ Surface on standard outer front door sill molding (6) must be dry, free of dust and grease. This helps to prevent adhesion problems.
 - i** Observe manufacturers instructions.
- 3 Remove carrier foils (7) on adhesive strips from rear of accessory outer front door sill (2).
- 4 Position outer accessory door sill (2) at rear edge (arrow) on standard outer door front sill (6) and glue on.
 - i** Uniformly press accessory outer rear door sill molding (2) to standard outer front door sill molding (6).
- 5 Fasten edge guard (5) in area of door sill molding.



P68.30-3242-07

- 6 Detach edge guard (8) in area of rear door sill.
- 7 Clean surface of standard rear outer door sill (9) with cleaning agent.
 - ⚠ Surface on standard outer rear door sill molding (9) must be dry, free of dust and grease. This helps to prevent adhesion problems.
- 8 Remove carrier foils (7) on adhesive strips from rear of accessory outer rear door sill molding (4).
- 9 Position rear outer accessory door sill (4) at rear edge (arrow) on standard outer door rear door sill (9) and glue on.
 - i** Uniformly press accessory outer rear door sill molding (4) to standard outer rear door sill molding (9).
- 10 Fasten edge guard (8) in area of door sill molding.