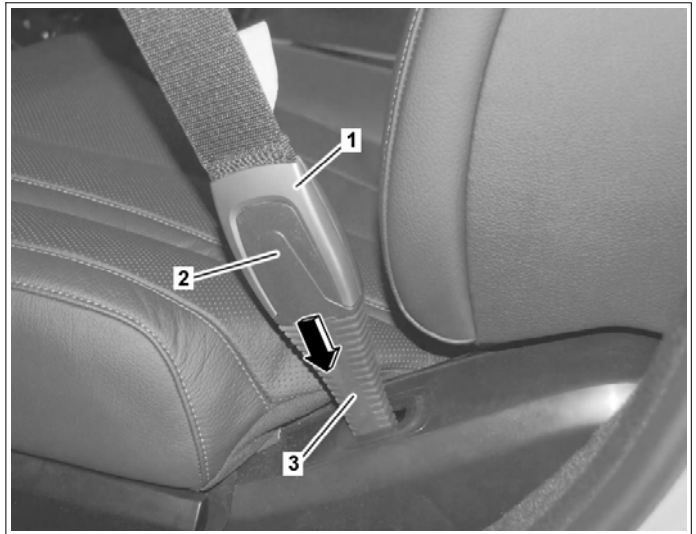


MODEL 222

Remove

- 1 Push cover (2) with boot (3) down approx. 5 mm on both sides in outer shell (1) and hold.



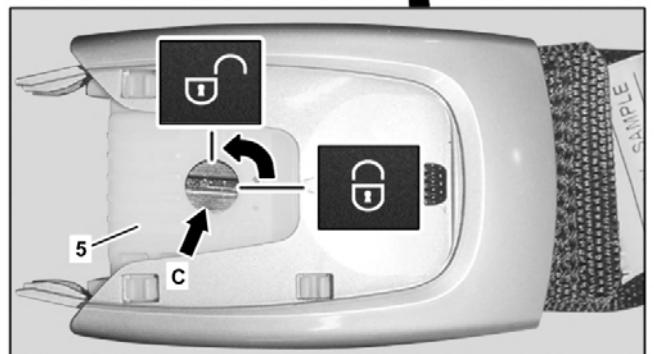
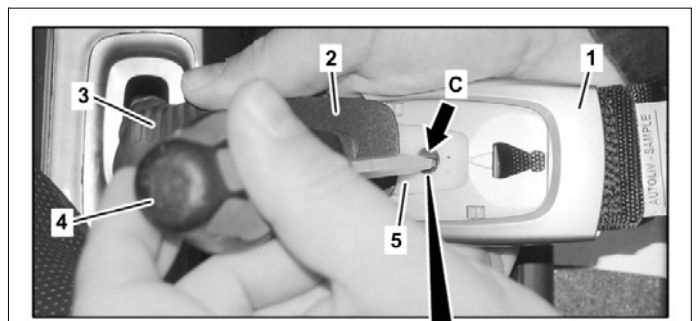
P91.40-3369-11

- 2 Remove guide (arrow A) of cover (2) on both sides from mount (arrow B) of outer shell (1).



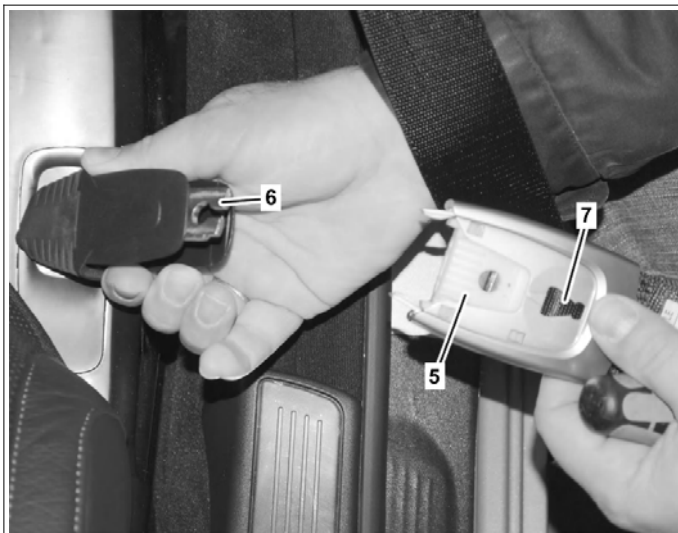
P91.40-3370-11

- 3 Push cover (2) and boot (3) down until fastening (arrow C) can be turned using suitable screwdriver (4).
- 4 Turn fastening (arrow C) in lock (5) of outer shell (1) using suitable screwdriver (4) approx. 90° counterclockwise until fastening (arrow C) engages.



P91.40-3378-12


- 5 Remove cable eye (6) from lock (5) of belt end fitting (7).




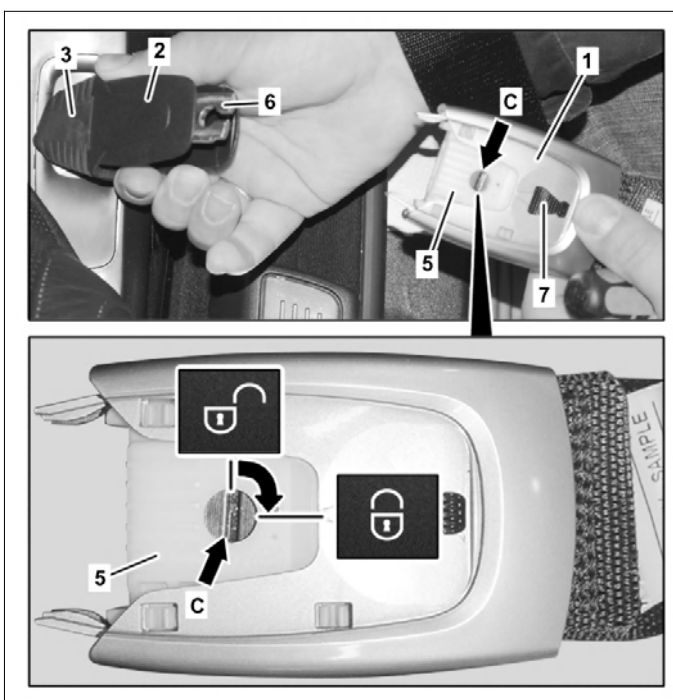
P91.40-3376-11

Install

- 6 Push back cover (2) and boot (3) until cable eye (6) can be pushed into lock (5) of belt end fitting (7).
- 7 Push cable eye (6) into lock (5) of belt end fitting (7) until lock (5) engages and fastening (arrow C) of lock (5) arrests in the "Locked" position.


 The lock (5) must audibly engage. Otherwise the cable eye (6) is not correctly fastened in the lock (5).

 Cable eye (6) and lock (5) are structurally coded (veh. up to 06/2014). Ensure that seat belt and belt end fitting (7) are routed correctly.



P91.40-3380-12

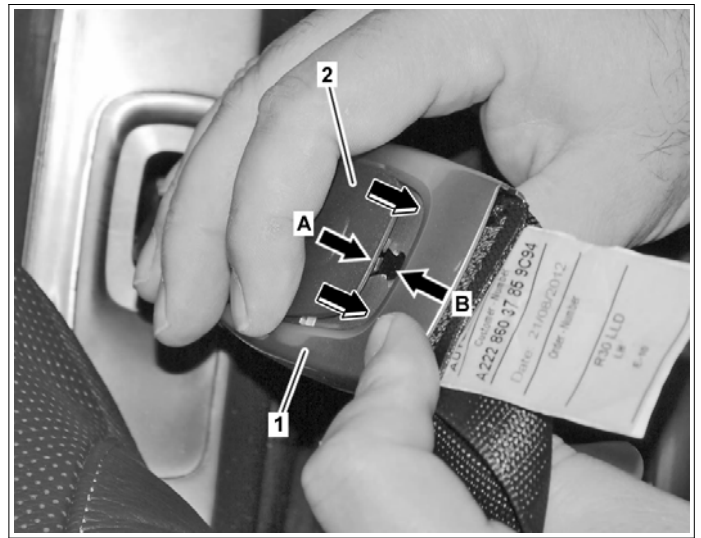
- 8 Check fastening (arrow C) of lock (5).

 Check that cable eye is seated correctly in lock (5) by jerking hard on seat belt. Have a helper check a second time that cable eye is seated correctly in lock (5) by jerking hard on seat belt. Fastening (arrow C) of lock (5) must remain in "locked" position.



P91.40-3377-11

- 9 Push cover (2) upward and insert guide (arrow A) of cover (2) on both sides in mount (arrow B) of outer shell (1).
- 10 Push cover (2) upward on both sides in mount (arrow B).
- i** Ensure that cover (2) is seated correctly on both sides of outer shell (1).



P91.40-3379-11