

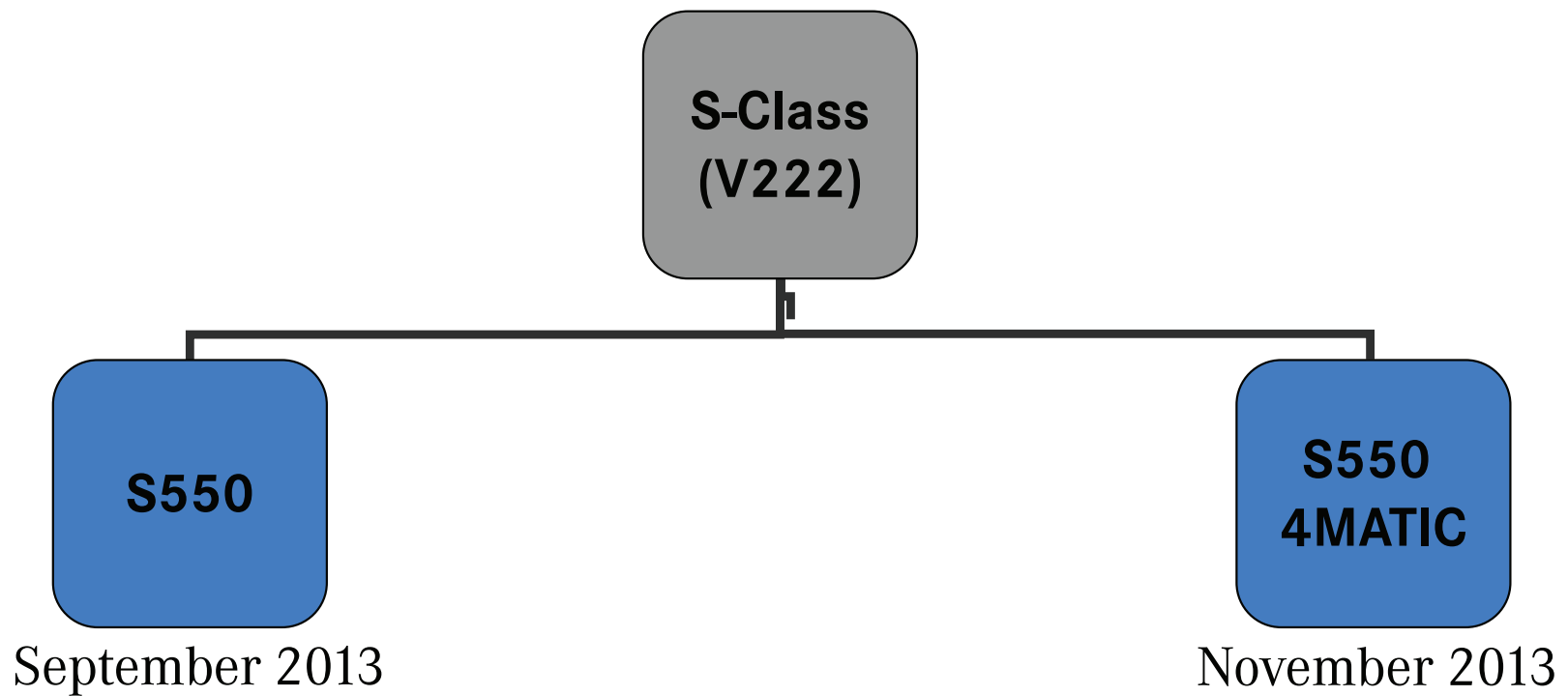


MY14 S-Class (V222)

Dealer Ordering Guide

Portfolio

Production Start is 6/2013, Retail launch expected in Sept. and Nov. 2013



Next Generation S-Class (V222):

The highest expression of the Mercedes-Benz brand

Lightweight Construction

- Hybrid aluminum/steel body shell and aluminum components such as roof, front-end, and detached body parts

Aerodynamics

- Benchmark in terms of aero-acoustics, and dramatic reduction in noise, vibrations, and harshness

Safety

- Special focus on rear passengers with seatbelt airbag and PRE-SAFE PLUS
- Enhancements made to LKA, ATTENTION ASSIST, CPA, DTR PLUS, BAS PLUS

Electronics

- Entirely new electronics architecture featuring brand-new headunit & instrument cluster NTG 5 with two 12.3" screens

Luxurious Interior

- Extensive use of leather, strong focus on comfort & attention to detail
- First MB to feature LED lighting throughout the entire vehicle, interior & exterior

MY14 S-Class (V222) Exterior



MY14 S-Class (V222) Exterior







MY14 S-Class (V222) Interior



MY14 S-Class (V222) Interior



MY14 S-Class (V222): *Standard Equipment*

- ECO Start/Stop System
- Rearview Camera
- Auto-dimming Mirrors
- Power Front Seats with Memory
- COMAND® System with Navigation
- Wood/Leather Steering Wheel
- COLLISION PREVENTION ASSIST 
- ATTENTION ASSIST®
- Panorama Sunroof
- MAGIC VISION CONTROL 
- mbrace2™ 
- iPod/MP3 Media Interface
- Power Rear Window Sunshade
- Soft-Close Doors
- Electronic Trunk Closer
- Ambient Lighting
- Heated Front Seats
- Burmester Sound System 
- LED Intelligent Light System
- Adaptive Highbeam Assist
- 7-Speed Automatic Transmission
- Illuminated Door Sills
- Leather Upholstery
- Sirius XM Satellite Radio

MY14 S-Class (V222): *Optional Equipment Highlights*

- **New generation Driver Assistance Package (997pkg)**

- Active Lane Keeping Assist with additional functionality on slower/standing cars, crash barriers, overtaking cars, and oncoming traffic, DISTRONIC PLUS® with Steering Assist & BAS PLUS® with Cross Traffic Assist

- **New generation Active Parking Assist (part of P01pkg)**

- With semi-automatic curbside parking function

- **Surround View Camera**

- **Rearseat Package (325pkg)**

- Rear seatbelt airbags, PRE-SAFE® Rear, 4-Zone Climate Control, Chauffeur Package

- **Warmth & Comfort Package (445pkg)**

- Heated steering wheel, heated front/rear armrests, heated & active ventilated rear seats, power rear seats, memory rear seats, rear heated seats plus

- **Air Balance Package (585pkg)**

- Fragrance, ionization and filtration of air through the HVAC system

- **MAGIC BODY CONTROL (487):** next gen. Active Body Control performs road surface scan w/camera

MY14 S-Class (V222) Specifications

Note: These are preliminary technical specifications. This information is not final and may refer to the European vehicle.!

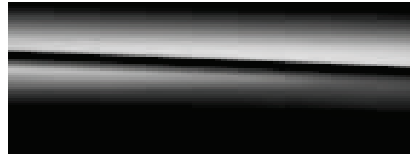
	S550	S550 4MATIC
Engine and Performance		
Engine/Valves	V8, 4 valves per cylinder	V8, 4 valves per cylinder
Rated output (hp at rpm)	455 hp @ 5,250 – 5,500	455 hp @ 5,250 – 5,500
Rated torque (lb-ft at rpm)	516 @ 1,800 – 3,500	516 @ 1,800 – 3,500
Acceleration 0-60 miles/h (s)	4.8	4.8
Displacement (cc.)	4,663	4,663
Top speed (miles/h)	130	130
Tank capacity/reserve (gallons)	21.1/2.1	21.1/2.1
Dimensions and Weight		
Vehicle length (in)	206.5	206.5
Vehicle height at curb weight (in)	58.8	58.8
Vehicle width (in)	74.8	74.8
Vehicle height (in.)	58.7	58.7
Headroom front (in.)	42.1	42.1
Wheelbase (in)	124.6	124.6
Curb weight/payload (lbs)	4442/1576	4442/1576
Suspension		
	Air-spring, single-tube shock absorber with continuously adjustable damping, multi-link front and multi-link rear independent suspension	

MY14 S-Class (V222) Paint

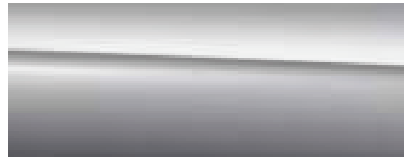
040 - Black



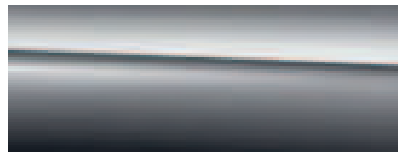
197 - Obsidian Black



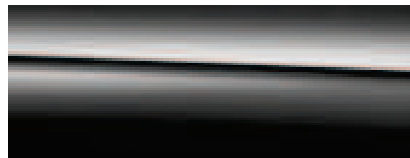
775 - Iridium Silver



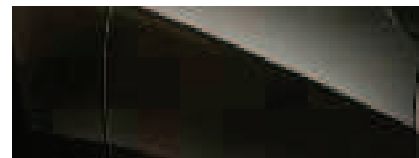
792 - Palladium Silver



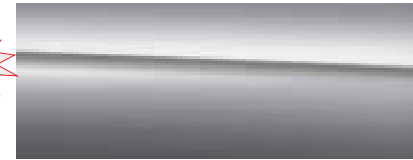
183 - Magnetite Black



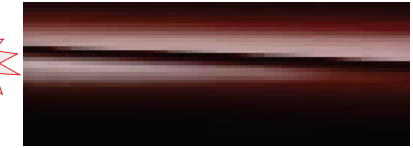
474 - Verde Brook



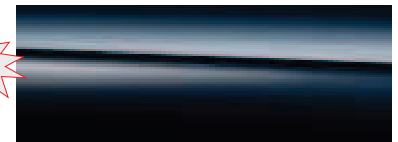
988 - Diamond Silver



897 - Ruby Black



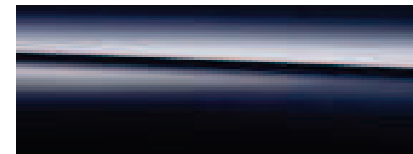
998 - Anthracite Blue



799 - Diamond White

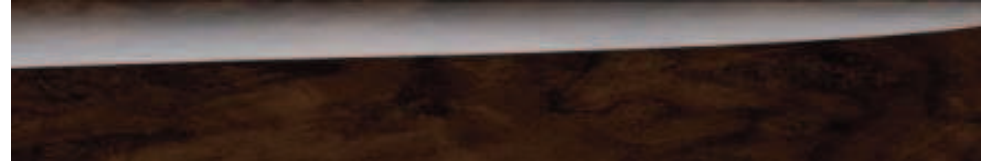


890 - Lunar Blue



MY14 S-Class (V222) Trim

731 - Burl Walnut Wood Trim



727 - Myrtle Sunburst Wood Trim

Includes 735 - Exclusive Trim (additional wood coverage)



729 - Black Poplar Wood Trim



H06 - Metalized Ash Wood Trim

Includes 735 - Exclusive Trim (additional wood coverage)



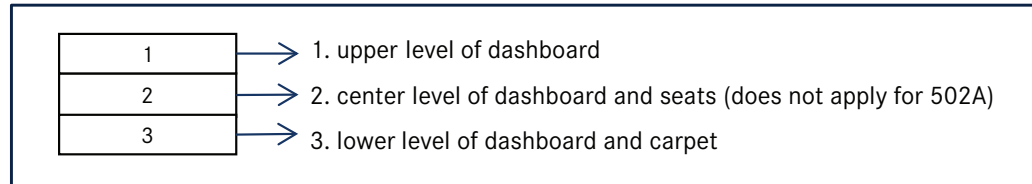
H10 - Carbon / Piano Black Lacquer Trim

For AMG variants only

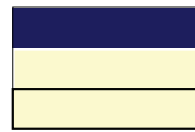


MY14 S-Class (V222) Upholstery

Two interior levels with different colors and stitching/designs and one additional “*designo*” interior level with identical features of “Exclusive Nappa Leather”.



designo **Exclusive Nappa Leather**
\$*tbd*



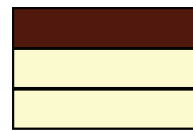
Deep-Sea Blue* /
Silk Beige⁵
(502)

Note: Delayed availability of 208, 808 & 815 (Expected Q4 CY2013)

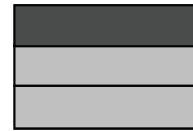
Nappa Leather
\$2,290



Black* / Black¹
(801)



Silk Beige* /
Espresso Brown²
(805)



Crystal Grey* /
Seashell Grey¹
(808)



Nut Brown* / Black³
(814)

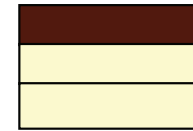


Porcelain* / Black³
(815)

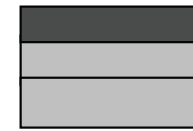
Leather
Standard



Black* / Black¹
(201)



Silk Beige* /
Espresso Brown²
(205)



Crystal Grey* /
Seashell Grey¹
(208)



Nut Brown* / Black³
(214)

Roof lining fabric colors:

¹ crystal grey (58U)

² porcelain (55U)

³ black (51U)

Roof lining DINAMICA colors:

⁴ crystal grey (68U)

⁵ porcelain (65U)

⁶ black (61U)

*first stated color refers to seat color

MY14 S-Class (V222) Wheels



R41 - 18" Multispoke:
Std for S550/S550 4M



793 - 19" AMG Twin 5-Spoke:
321 Sport Package



769 - 20" AMG Multispoke:
421 Sport Package Plus One



12R - 19" 7-Spoke :
P88 Edition 1 for S550/S550 4M



R17 - 19" Twin 5-Spoke:
Optional 19" for S550/S550 4M



53R - 20" 5-Spoke:
Optional 20" for S550/S550 4M

MY14 S-Class (V222) Optional Packages

P01pkg – Premium 1 Package

S550/S5504M: \$4,500

- 235- PARKTRONIC with Active Parking Assist
- 297 - Power Rear Window Sunblinds
- 401 - Heated and Active Ventilated Front Seats
- 432 - Active Multicontour Seats with Massage
- 889 - KEYLESS GO / 871 - HANDS FREE ACCESS
- P17 - KEYLESS GO Comfort Package
- 902 - Front Heated Seats - PLUS

997pkg – Driver Assistance Package

All Models: \$2,800, *Requires P01pkg*

- 233 - DISTRONIC PLUS
- 237 - Active Blind Spot Assist
- 238 - Active Lane Keeping Assist
- 253 - CMS Rear
- 266 - DISTRONIC PLUS with Steering Assist
- 268 - BAS PLUS 269 - CMS Lane
- 271 - PRE-SAFE PLUS P20 - ADAS pkg code
- 300 - PRE-SAFE Brake

501pkg – Surround View Camera

All models: \$800, *Requires P01pkg*

- 501 - Surround View Camera
- P44 - Control code

Delayed availability , N/A on earliest S550 2WD

864pkg – Rear Seat Entertainment Pkg

All Models: \$2,650

- 816 - Remote Controls (2) P46- RS Ent. Pkg
- 864 - Rear Seat Entertainment System

MY14 S-Class (V222) Optional Packages

325pkg – Rear Seat Package

All Models: \$3,000, *Requires 223 & 276*

305 – PRE-SAFE® Rear Belt Buckle

306 – Rear Seatbelt Airbags

439 – EASY ADJUST Headrests

582 – 4-Zone Clim. Control P36 –PRE-SAFE® pkg rear

P07 – Chauffeur Pkg Rear 452 – Chauffeur co-driver

445pkg – Warmth & Comfort Package



All Models: \$2,350, *Requires P01pkg*

223 – Power Rear Seats

276 – Memory Rear Seats

402 – Heated & Active Ventilated Rear Seats

443 – Heated Steering Wheel

903 – Rear Heated Seats - PLUS

906 – Front Heated Armrests

907 – Rear Heated Armrests P69– Warmth & Comf. Pkg

N/A with the standard leather (2XX) upholstery in MY2014

321pkg – Sport Package

S550, S550 4MATIC: \$5,900, N/A for AMG

772 – Sport Bodystyling

793 – 19” AMG Twin 5-Spoke Wheel

951 – Sport Package Code

421pkg – Sport Package Plus One

S550, S550 4MATIC: \$6,650, N/A for AMG

772 – Sport Bodystyling

769 – 20” AMG Multispoke Wheel

951 – Sport Package Code



585pkg – Air Balance Package



All models: \$350

P21 – Air Balance – Ionization, Perfume, Filtration

MY14 S-Class (V222) Stand-Alone Options

	S550	S550 4MATIC	S63 AMG
487 – MAGIC BODY CONTROL 	\$4,450	N/A	N/A
610 – Night View Assist PLUS	\$2,260	\$2,260	\$2,260
811 – Burmester Reference Sound System 	\$6,400	\$6,400	\$6,400
867 – SPLITVIEW	\$710	\$710	\$710
R17 – 19” Twin 5-Spoke Wheel	\$1,270	\$1,270	N/A
53R – 20” 5-Spoke Wheel	\$2,200	\$2,200	N/A
647 – 20” AMG 10-Spoke Wheel	N/A	N/A	XX
648 – 20” AMG 10-Spoke Wheel	N/A	N/A	XX
443 – Heated Steering Wheel	\$490	\$490	\$490
B07 – AMG Carbon Ceramic Braking System	N/A	N/A	\$12,625
872 – Heated Rear Seats	\$620	\$620	\$620
223/276 – Power rear seats with memory	\$1,515	\$1,515	\$1,515

MY14 S-Class (V222) Special Order Options

397pkg – Rear Seat Package PLUS



All models: \$3,500, *Requires P01, 445pkg, 325pkg, 864pkg*

- 406 – Multi-contour rear seats with massage
- 453 – Executive rear seat
- P43 – Rear seating comfort package

398pkg – Executive Rear Seat Package



All models: \$1,950, *Requires P01, 445pkg, 325pkg, 864pkg, 397pkg*

- 224 – Two place seating in the rear
- 449 – Folding tables in rear

