



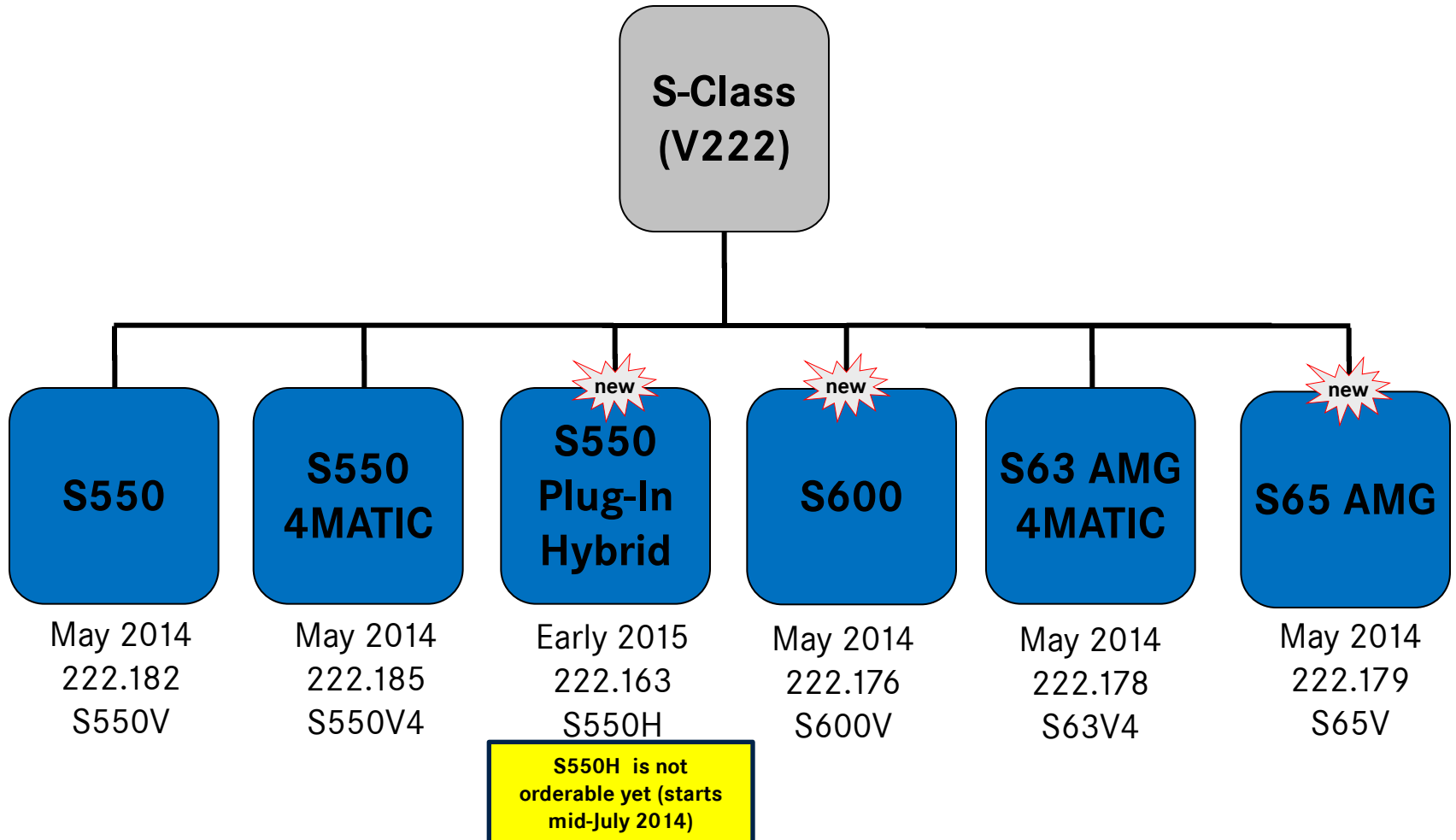
MY15 S-Class (V222)

Dealer Ordering Guide

Updated: 3/26/2014

Portfolio


Production Start is 3/2014 for all variants apart from the S550 Plug-In Hybrid.
Retail launch expected in 5/2014 for all variants, and in early 2015 for the S550 Plug-In Hybrid.



What's New for MY15

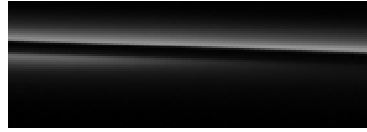
- **Variants**: S550 Plug-In Hybrid (S550H), S600 (S660V), S65 AMG (S65V)
- **Standard Equipment**: Air Balance Package (code P21) and Touchpad (448)
- **Paints**: *designo* Mocha Black (033), *designo* Magno Alanite Grey (044), *designo* Magno Cashmere White (049)
- **Trims**: *designo* Black Piano Lacquer (H21), Eucalyptus (734 - only for S550H)
- **Upholsteries**: Crystal Grey/Seashell Grey in additional offerings (208, 508, 858, 568), Porcelain/Black in additional offerings (815/865), *designo* Silk Beige/Titanium Grey Pearl Exclusive Semi-Aniline Leather (965/985 with P34 and P62), *designo* Silk Beige/Satin Red Pearl Exclusive Semi-Aniline Leather (975/995 with P34 and P87)
- **Options**: Head-Up Display (463), 19" 7-Spoke Wheel (12R), 20" Multispoke Wheel (13R), Carbon Ceramic Braking System for AMGs (B07)
- **Packages**: Change in just the package code for the "Executive Rear Seat Package PLUS" from 398pkg to 399pkg. Deletion of the 421 Package and replacing it with 321 – Sport Package (choice of wheel: 793 at \$5,900 or 769 at \$6,650)

MY15 S-Class (V222): *Standard Equipment*

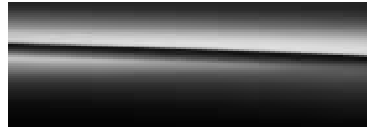
- ECO Start/Stop System
- Rearview Camera
- Auto-dimming Mirrors
- Power Front Seats with Memory
- COMAND® System with Navigation
- Wood/Leather Steering Wheel
- COLLISION PREVENTION ASSIST
- ATTENTION ASSIST®
- Panorama Sunroof
- MAGIC VISION CONTROL
- mbrace2™
- iPod/MP3 Media Interface
- Air Balance Package 
- Power Rear Window Sunshade
- Soft-Close Doors / Heated Front Seats
- Electronic Trunk Closer
- Ambient Lighting
- Burmester® Surround Sound System
- LED Intelligent Light System
- Adaptive Highbeam Assist
- 7-Speed Automatic Transmission
- Illuminated Door Sills
- Leather Upholstery
- Sirius XM Satellite Radio
- KEYLESS Start
- Touchpad for COMAND System 

MY15 S-Class (V222) Paint

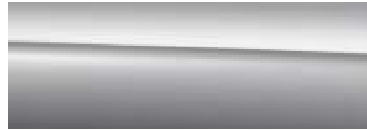
040 - Black



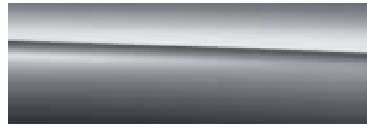
197 - Obsidian Black



775 - Iridium Silver



792 - Palladium Silver



183 - Magnetite Black



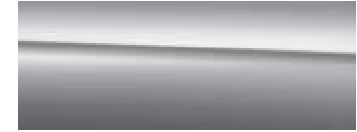
474 - Verde Brook



033 - *designo* Mocha Black



988 - Diamond Silver



897 - Ruby Black



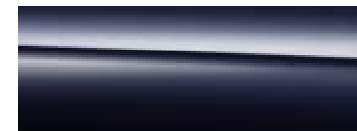
998 - Anthracite Blue



799 - Diamond White



890 - Lunar Blue



049 - *designo* Magno Cashmere White (Matte Finish)



044 - *designo* Magno Alanite Grey (Matte Finish)

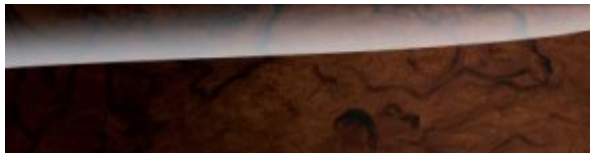


MY15 S-Class (V222) Trim

731 – Burl Walnut Wood Trim



727 – *designo* Brown Sunburst Myrtle Wood Trim



- Requires 735 – Exclusive Trim:
\$800 charge for trim + cost of 735-
Exclusive Trim (\$950)

734– Eucalyptus Wood Trim new



Only available on S550 Plug-In Hybrid

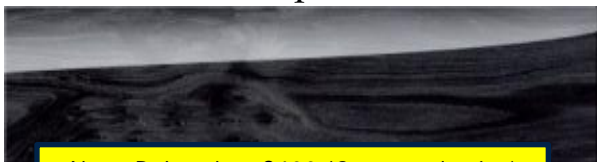
H06 – *designo* Metallized Ash Wood Trim



Note: Delayed on S600 (Sept. production)

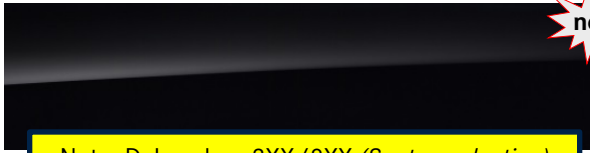
- Requires 735 – Exclusive Trim:
\$800 charge for trim + cost of 735-
Exclusive Trim (\$950)
- Cannot have with: Nut Brown/Black
(214/814/514), Deep-Sea Blue/Silk
Beige (502), and Silk Beige/Espresso
Brown (205/805/505)

729 – Black Poplar Wood Trim



Note: Delayed on S600 (Sept. production)

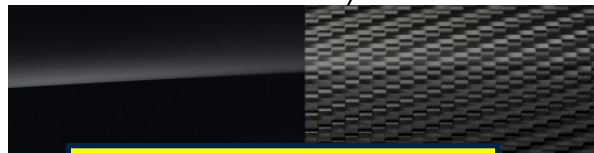
H21 – *designo* Black Piano Trim new



Note: Delayed on 2XX/8XX (Sept. production)

- Requires 735 – Exclusive Trim:
\$800 charge for trim + cost of 735-
Exclusive Trim (\$950)

H10 – AMG Carbon Fiber / Black Piano Lacquer



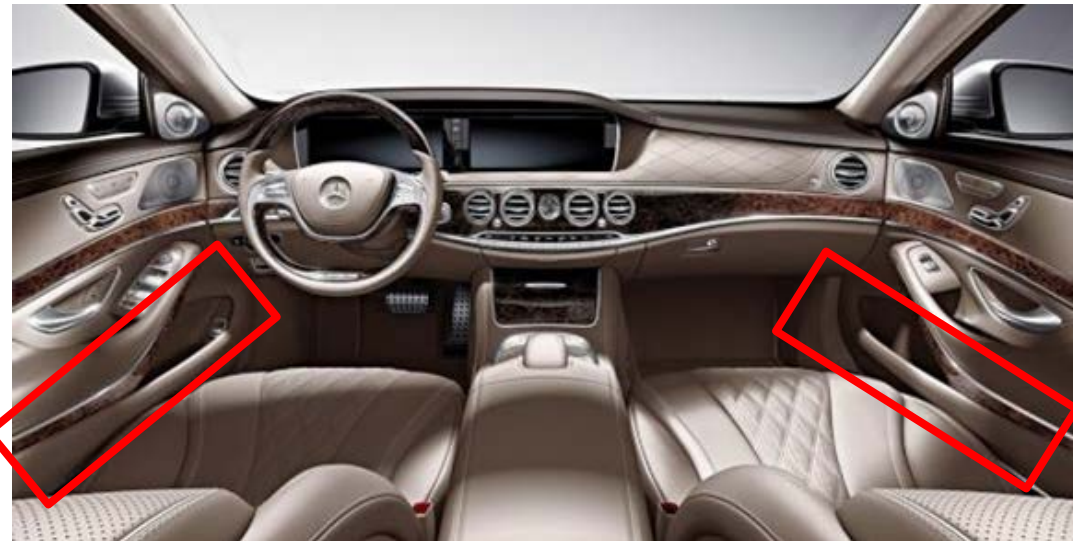
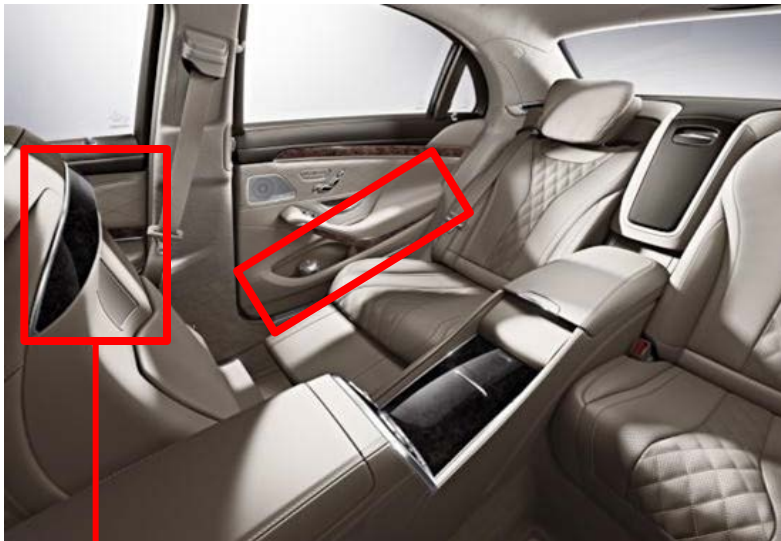
Note: Delayed until June production

- Only available on AMG models
- Requires 735 – Exclusive Trim:
\$3,700 charge for trim + cost of
735-Exclusive Trim (\$950)

Note: 735-Exclusive Trim (provides additional wood trim) is available on all trims in combination with 2XX and 8XX upholsteries. When Exclusive Nappa Upholsteries are ordered (5XX), codes P34 and 735 are required (Exclusive Nappa Interior & Exclusive Trim)

735 – Exclusive Trim

- Additional wood in the following locations:
 - In the front: wood door center panels
 - In the rear: wood door center panels and rear air vent cover
 - Reverse sides of the front seats: wood trim in conjunction with all trims
 - Note: 5XX upholsteries require 735 – Exclusive Trim
 - Note: H06, H10, H21 and 727 trims require 735 – Exclusive Trim, regardless of upholstery



Note: Wood on the back side of the front seats is available in conjunction with all trims

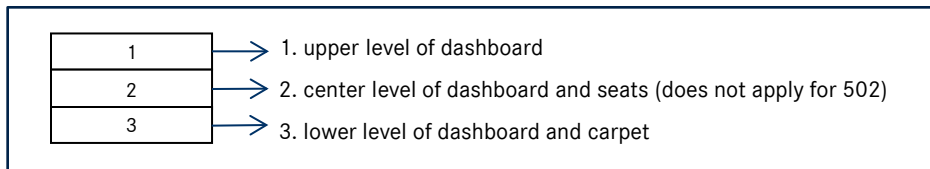
MY15 S-Class (V222) Upholstery

Three interior levels with different colors and stitching/designs and one additional “*designo*” interior with identical features of “Exclusive Nappa Leather”. Note: The first stated color below will always refer to the seat color.

designo Exclusive Nappa Leather
\$5,550
 Requires P34 & 735 – Exclusive Nappa Upholstery & Excl. Trim
 Requires 445PKG or 223 option



Deep-Sea Blue* /
 Silk Beige⁵
 (502)



Exclusive Nappa Leather
\$4,450
 Requires P34 & 735 – Exclusive Nappa Upholstery & Excl. Trim
 Requires 445PKG or 223 option



Black* / Black⁶
 (501)

Silk Beige* /
 Espresso Brown⁵
 (505)

Nut Brown* / Black⁶
 (514)

Porcelain* / Black⁶
 (515)

new
 Crystal Grey* /
 Seashell Grey⁴
 (508)

Nappa Leather
\$2,290



Black* / Black³
 (801)

Silk Beige* /
 Espresso Brown²
 (805)

Nut Brown* / Black³
 (814)

new
 Porcelain* / Black³
 (815)

Crystal Grey* /
 Seashell Grey¹
 (808)

Leather Standard



Black* / Black³
 (201)

Silk Beige* /
 Espresso Brown²
 (205)

Nut Brown* / Black³
 (214)

new
 Crystal Grey* /
 Seashell Grey¹
 (208)

Roof lining fabric colors:

¹ crystal grey (58U)

² porcelain (55U)

³ black (51U)

Roof lining DINAMICA colors:

⁴ crystal grey (68U)

⁵ porcelain (65U)

⁶ black (61U)

designo Silk Beige / Satin Red Pearl (P87)



- Code 975 + P87 + P34 (non AMGs)
- Code 995 + P87 + P34 (AMGs)

Currently can only be combined with H21 trim (documentation change planned within next 1-2 months)

DELAYED until 3rd Decade June Production

- Seats in semi-aniline leather in Silk Beige with upholstery buttons and Budapest piping, with *designo* badge in the backrests of the front and rear seats. Seat layout features an exclusive diamond design with the diamond pattern on the entire seat center section . Upholstery includes the DINAMICA porcelain headliner and sun visors as standard.
- Upper part of the dashboard and beltlines in Satin Red Pearl Nappa leather with piping and contrast topstitching in Silk Beige. Front and rear center armrests in Satin Red Pearl Nappa leather with diamond quilting (in the rear only with the Executive Rear Seat Package PLUS). Center part of dashboard partially finished in quilted diamond pattern in Silk Beige Nappa leather. *designo* floor mats in Silk Beige velour, edged with Silk Beige Nappa leather, with *designo* badges. Exclusive Trim (additional wood) is included.

Note: Cannot have with H06-*designo* Metallized Ash Wood Trim

designo Silk Beige/Titanium Grey Pearl (P62)



- Code 975 + P87 + P34 (non AMG)
- Code 995 + P87 + P34 (AMGs)

Currently can only be combined with H21 trim (documentation change planned within next 1-2 months)

DELAYED until 3rd Decade June Production

- Seats in semi-aniline leather in Silk Beige with upholstery buttons and Budapest piping, with *designo* badge in the backrests of the front and rear seats. Seat layout features an exclusive diamond design with the diamond pattern on the entire seat center section . Upholstery includes the DINAMICA porcelain headliner and sun visors as standard.
- Upper part of the dashboard and beltlines in Titanium Grey Pearl Nappa leather with piping and contrast topstitching in Silk Beige. Front and rear center armrests in Titanium Grey Pearl Nappa leather with diamond quilting (in the rear only with the Executive Rear Seat Package PLUS). Center part of dashboard partially finished in quilted diamond pattern in Silk Beige Nappa leather. *designo* floor mats in Silk Beige velour, edged with Silk Beige Nappa leather, with *designo* badges. Exclusive Trim (additional wood) is included.

Note: Cannot have with H06-*designo* Metallized Ash Wood Trim

S550V / S550V4 Wheels



R41 - 18" 10-Spoke
Standard
All-Season Tires



793 - 19" AMG Twin 5-Spoke
321pkg - Sport Package, \$5,900
All-Season Tires



769 - 20" AMG Multi-spoke
321pkg - Sport Package, \$6,650
Summer Tires



R17 - 19" Twin 5-Spoke Wheel
Optional \$1,270
All-Season Tires



12R - 19" 7-Spoke Wheel
Optional \$TBD
All-Season Tires



53R - 20" 5-Spoke Wheel
Optional \$2,200
Summer Tires



13R - 20" Multispoke Wheel
Optional \$TBD
Summer Tires

S600 Wheels

Note: 20" Wheels on the S600 do NOT have MOE or Run-Flat Tires. Comes standard with conventional tires and a Tire Fit Kit.



11R - 19" Multispoke S600 Wheel
Standard
All-Season Tires



R17 - 19" Twin 5-Spoke Wheel
Optional \$TBD
All-Season Tires



12R - 19" 7-Spoke Wheel
Optional \$TBD
All-Season Tires

Note: This wheel has Conventional (Non-MOE or Run-Flat) Tires. Comes standard with Tire Fit Kit.



13R - 20" Multispoke Wheel
Optional \$TBD
Summer Tires

Note: This wheel has Conventional (Non-MOE or Run-Flat) Tires. Comes standard with Tire Fit Kit.



53R - 20" 5-Spoke Wheel
Optional \$TBD
Summer Tires

MY15 S-Class (V222) Optional Packages

P01pkg – Premium 1 Package

S550/S5504M/S550 Hybrid: \$4,500

S600/S63/S65: STD

235 – PARKTRONIC with Active Parking Assist

297 – Power Rear Window Sunblinds

401 – Heated and Active Ventilated Front Seats

432 – Active Multicontour Seats with Massage

889 – KEYLESS GO / 871 – HANDS FREE ACCESS

P17 – Control Code

902 – Front Heated Seats – PLUS

P44 – Control code

997pkg – Driver Assistance Package

All Models: \$2,800, *Requires P01pkg*

S600/S65: STD

233 – DISTRONIC PLUS

300 – PRE-SAFE Brake

237 – Active Blind Spot Assist

238 – Active Lane Keeping Assist

253 – CMS (Collision Mitigation System) Rear

266 – DISTRONIC PLUS with Steering Assist

268 – BAS PLUS

269 – CMS Lane

271 – PRE-SAFE PLUS

P20 – Control Code

501pkg – Surround View Camera Pkg

S550/S5504M/S550 Hybrid/S63: \$900

S600/S65: STD *Requires P01pkg*

501 – Surround View Camera P44 – Control Code

864pkg – Rear Seat Entertainment Pkg

S550/S5504M/S550 Hybrid/S63: \$2,650

S600/S65: STD

816 – Remote Controls (2) P46 – Control Code

864 – Rear Seat Entertainment System

MY15 S-Class (V222) Optional Packages

325pkg – Rear Seat Package

All Models: \$3,000, STD on S600/S65

Requires 223 (power rear seats) & 276 (rear memory seats)

Note: 223 reduces trunk space

305 – PRE-SAFE® Rear Belt Buckle 306 – Rear Seatbelt Airbags

439 – EASY ADJUST Headrests P07 –Control Code

582 – 4-Zone Clim. Control P36 –PRE-SAFE® pkg rear

452 –Electrically adjustable right rear footrest, front passenger seat moves forward and additional 77 mm. and can lay flat

445pkg – Warmth & Comfort Package

All Models: \$2,600, STD on S600/S65

Requires P01pkg

223 – Power Rear Seats Note: 223 reduces trunk space

276 – Memory Rear Seats

402 – Heated & Active Ventilated Rear Seats

443 – Heated Steering Wheel

903 – Rear Heated Seats - PLUS

906 – Front Heated Armrests

907 – Rear Heated Armrests P69– control code

N/A with the standard leather (2XX) upholstery in MY2015

321pkg – Sport Package

Limited Availability

S550, S550V4, S550H: \$5,900 (793 Wheel),
\$6,650 (769 Wheel)

N/A for S600 and AMGs

772 – Sport Bodystyling

951 – Sport Package Code

Choice of Wheel:

793 – 19” AMG Twin 5-Spoke Wheel

769 – 20” AMG Multispoke Wheel

585pkg – Air Balance Package

All models: STD



P21 – Air Balance – Ionization, Perfume, Filtration

MY15 S-Class (V222) Optional Packages

397pkg – Executive Rear Seat Package

All Models: \$3,500, STD on S600/S65

Requires P01, 445pkg, 325pkg, 864pkg

406 – Multi-contour drive-dynamic rear seats with hot stone massage

453 – Executive rear seat - recline to 43° angle for right seat only

P43 – Control Code

399pkg – Executive Rear Seat Package PLUS

All models: \$1,950, *Requires P01, 445pkg, 325pkg, 397pkg, 864pkg*

Note: 223 reduces trunk space


224 – Two place seating in the rear (rear console in middle with heated/cooled cupholders LED lit red or blue)

449 – Two folding tables in rear



Note: 223 reduces trunk space, 397 and 398 packages cannot lay completely flat even though 325pkg has this capability. 397/398 packages require 864pkg (Rear Seat Ent.), thus the screens obstruct the capability to completely lay flat.

MY15 S-Class (V222) Stand-Alone Options

	S550/S550H	S550 4M	S63 AMG 4M	S600	S65
487 - MAGIC BODY CONTROL	\$4,450	N/A	N/A	STD	STD
610 - Night View Assist PLUS	\$2,260	\$2,260	\$2,260	STD	STD
811 - Burmester® High-End 3D Surround Sound System <i>Note: Dramatically reduces trunk space</i>	\$6,400	\$6,400	\$6,400	STD	STD
867 - SPLITVIEW	\$710	\$710	\$710	\$710	\$710
R17 - 19" Twin 5-Spoke Wheel	\$1,270	\$1,270	N/A	TBD	N/A
53R - 20" 5-Spoke Wheel	\$2,200	\$2,200	N/A	TBD	N/A
443 - Heated Steering Wheel <i>Note: Only available w/2XX uphol.</i>	\$490	\$490	N/A	STD	STD
872 - Heated Rear Seats	\$620	\$620	\$620	N/A	N/A
223/276 - Power rear seats with memory <i>Note: Reduces trunk space</i>	\$1,515	\$1,515	\$1,515	STD	STD
735 - Exclusive Trim (add'tl wood trim throughout interior) <i>Note: Available w/2XX & 8XX uphol, Required w/5XX (w/P34)</i>	\$950	\$950	\$950	STD	STD
P34 - Exclusive Leather Nappa Upholstery (5XX) <i>Note: Only on 5XX uphol. & required w/735</i>	\$4,450	\$4,450	\$4,450	XX	XX
B07 - Carbon Ceramic Braking System new 	N/A	N/A	TBD	N/A	TBD
U70 - Red Painted Brake Calipers	N/A	N/A	\$700	N/A	N/A
463 - Head-Up Display new	TBD	TBD	TBD	STD	STD
308 - Refrigerator console in the rear	\$1,100	\$1,100	\$1,100	\$1,100	\$1,100
597 - Heated Windshield new <i>Note: 308 dramatically reduces trunk space</i>	TBD	TBD	TBD	TBD	TBD