

In order for the front-passenger seat to be positioned in chauffeur mode:

- the front-passenger door must be closed
- the SmartKey must be in the ignition lock and in position **1** or **2** (▷ page 171)
- the front-passenger seat may not be occupied
- the front-passenger seat belt must not be inserted into the buckle

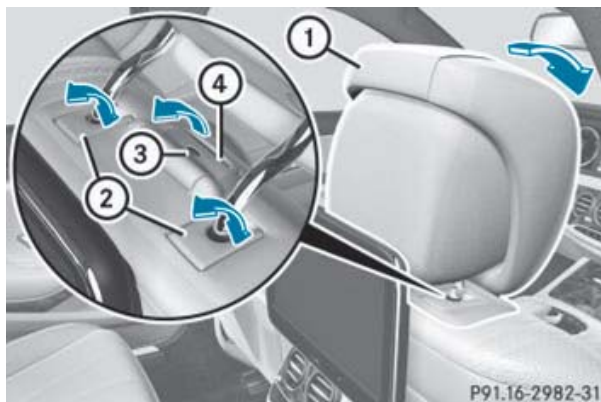
- ▶ **To select the front-passenger seat:** press button **①** repeatedly until the indicator lamp in the button lights up. The front-passenger seat is selected if the indicator lamp in the button lights up.
- ▶ Press button **②** forward and hold it. The seat moves forward. The seat stops at the threshold of the area for chauffeur mode.
- ▶ Release button **②**.
- ▶ Press and hold button **②** again until the front-passenger seat is in position for chauffeur mode. The head restraint on the front-passenger seat folds forwards. The seat moves forward.

The **To view the ext. mirror, adjust front-passenger seat or remove the head restraint.** message appears in the multifunction display (▷ page 299).

- i** If the front-passenger seat is already at the threshold to the area for the chauffeur mode, the position for the chauffeur mode is set immediately.
- i** The position for chauffeur mode cannot be stored or set with the driver's seat memory function.

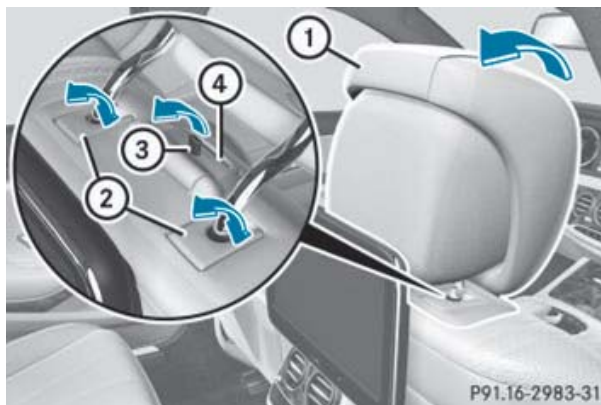
## Installing/removing the head restraint

### Removing



- ▶ Move the seat into the position for chauffeur mode, until the head restraint folds forward completely (▷ page 118).
- ▶ Fold head restraint bar covers **②** backwards.
- ▶ Pull adjuster lever **④** backwards and hold it in this position. Hold head restraint **①** while doing so.
- ▶ Remove head restraint **①**.
- ▶ Release adjuster lever **④**. Red pin **③** protrudes from the adjuster lever.
- ▶ Press down red pin **③**.
- ▶ Fold covers **②** forwards and close them.

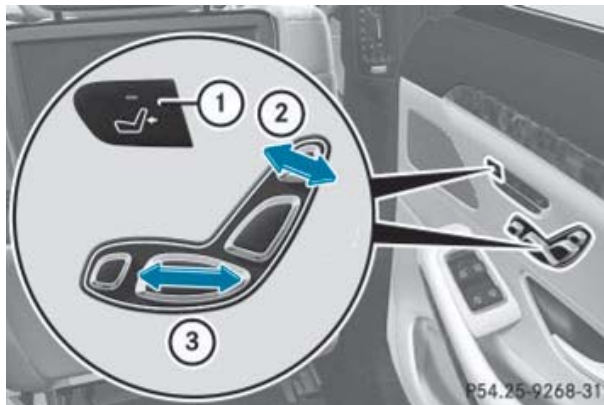
### Installing



- ▶ Fold covers ② backwards.
- ▶ Pull adjuster lever ④ backwards and hold it in this position.  
Red pin ③ protrudes from the adjuster lever.
- ▶ Insert head restraint ① into the brackets.  
The head restraint must engage on both sides.
- ▶ Release adjuster lever ④.
- ▶ Press down red pin ③.  
If the pin can be pressed down and is then no longer visible, the head restraint has engaged correctly.
- ▶ Fold covers ② forwards and close them.  
The head restraint folds into position automatically.

### Moving the front-passenger seat into the normal position

#### Adjusting from the rear compartment



You can use the override button to disable this function (▷ page 69).

The head restraint must be installed, in order for the front-passenger seat to be moved into the normal position (▷ page 119).

- ▶ **To select the front-passenger seat:**  
press button ① repeatedly until the indicator lamp in the button lights up.  
The front-passenger seat is selected if the indicator lamp in the button lights up.
- ▶ Press button ③ backwards and hold it in this position.  
The front-passenger seat moves into the normal adjustment range at the threshold of the area for chauffeur mode. The head restraint folds into position.  
If you continue to hold down button ③, the seat continues to move backwards.

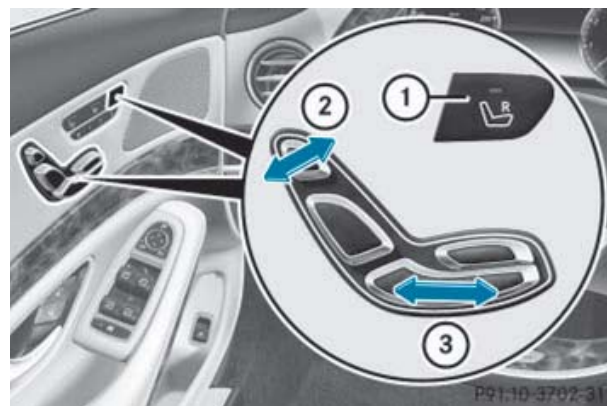
or

- ▶ Briefly press button ② backwards.  
The front-passenger seat moves into the normal adjustment range at the threshold to the area for chauffeur mode. The head restraint folds into position.

**i** Further settings are available via the memory adjustment buttons, if:

- a position in the normal setting has already been saved.
- the front-passenger seat has been selected with button ①.

#### Adjusting from the driver's seat



The head restraint must be installed, in order for the front-passenger seat to be moved into the normal position (▷ page 119).