

## Throttle lift-off clunking noises at drive shafts of front axle

---

Topic number	LI33.30-P-056665
Version	7
Function group	33.30 - Final drive, differential, drive shaft
Date	12/7/22
Validity	Models: All Mercedes-Benz cars with front-wheel drive and 4x4 vehicles
Reason for change	Add Op code

---

### Complaint

Single throttle lift-off clunking noise from the side shaft when moving off (audible at the outboard end). The clunk is heard once when changing from forward to reverse (and vice versa).

Note: Sound file in attachment

Attachments	
File	Description
<a href="#">Beanstandung Lastwechselknacken.mp3</a>	Sound recording of complaint

### Cause

If the complaint is eliminated by experimentally loosening the outboard collar nut (by 1 turn), the concern is due to micromovement in the connection between the wheel bearing inner race and the joint housing of the side shaft.

Note: The collar nut must always be replaced after being loosened and must be tightened to the specified torque.

### Remedy

Coat contact surface of side shaft with wheel bearing with Molykote paint. To do this, proceed as follows:

1. Remove outboard side shafts (extract outer joint gearing from wheel hub)
2. Clean contact surface A (see image file in attachment "Outer joint housing before") before coating with Molykote paint (free of dust and grease)
3. Coat contact surface A (see image file in attachment "Outer joint housing after") with Molykote and leave to dry for one hour in removed condition
4. Reinstall side shafts

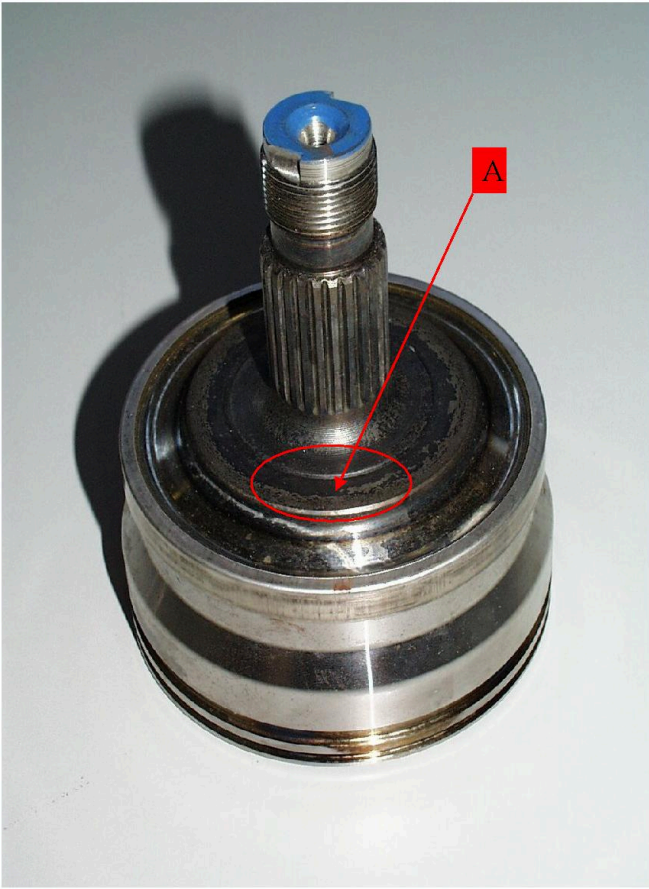
Note: Before using low friction paint (Molykote) stir or shake it thoroughly.

Attachments	
File	Description
<a href="#">Gelenkgehäuse aussen vor.jpg</a>	Before coating with Molykote paint

---

# XENTRY TIPS

---



Gelenkgehäuse aussen nach.jpg

After coating with Molykote paint

# XENTRY TIPS



Symptoms
Power transmission > Noises > Throttle lift-off clunking noise
Power transmission > Drive shaft > Axle shaft > Noises > Knocking/banging
Chassis/suspension > Noises > Cracking
Chassis/suspension > Axle > Front axle > Noises > Cracking

Parts						
Part number	ES1	ES2	Designation	Quantity	Note	EPC
A0009890152	10		Low-friction paint (Molykote)	1		X

Operation numbers/damage codes				
Op. no.	Operation text	Time	Damage code	Note
330000	REMOVE/INSTALL PARTS OF LEFT FRONT AXLE SHAFT.		33H1034	Left side shaft
330000	REMOVE/INSTALL PARTS OF RIGHT FRONT AXLE SHAFT.		33W1034	Right side shaft
330000	REMOVE/INSTALL PARTS OF FRONT AXLE SHAFTS (BOTH)			Left and right side shafts
406500	40-6500-01 Perform wheel alignment check			Alignment Check

## XENTRY TIPS

---

---