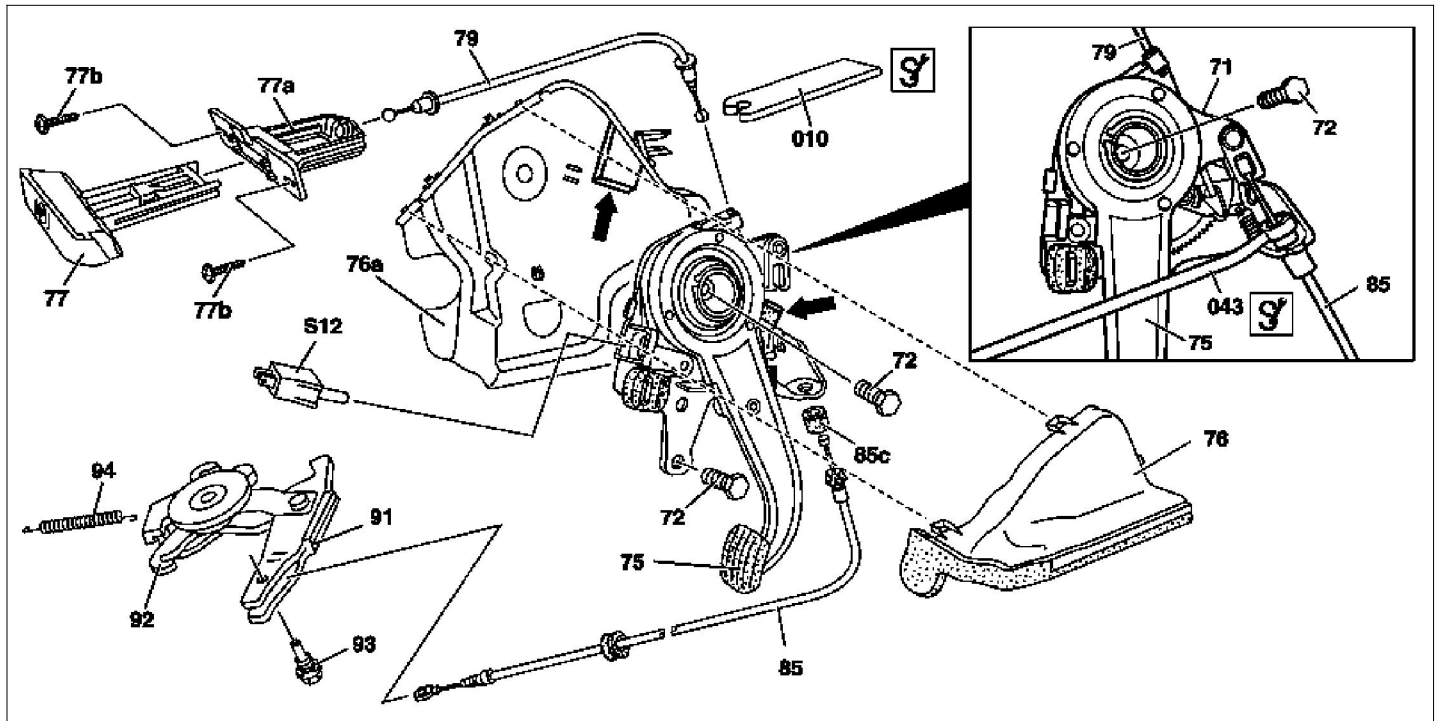
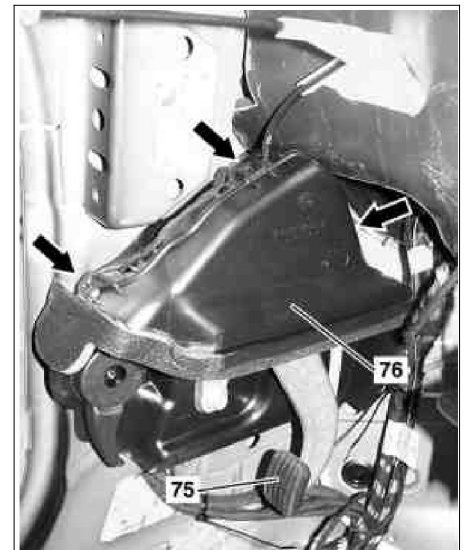


MODEL 215, 220



P42.20-2067-09



P42.20-2068-02

Modification notes

2.12.02	Notes on self-locking nuts and bolts, included for the first time		AH00.00-N-0001-01A
2.12.02	Check version of pedal assembly, added	Step 12	BT42.20-P-0510-01A

	Remove/install		
Danger!	Risk of death caused by vehicle slipping or toppling off of the lifting platform.	Align vehicle between the columns of the lifting platform and position the four support plates at the lifting platform support points specified by the vehicle manufacturer.	AS00.00-Z-0010-01A
	Notes on self-locking nuts and bolts		AH00.00-N-0001-01A
1	Raise vehicle with vehicle lift		
2	Preload automatic slack adjuster (92)		AR42.20-P-0520-01A

3	Remove screw (93) from intermediate lever (91) of automatic cable slack adjuster (92)		
4	Remove left cover below dashboard	Model 215 Model 220	AR68.10-P-1500N AR68.10-P-1500M
5	Remove front left floor covering		AR68.20-P-2050M
6	Loosen clamps (arrows) and remove cover (76) of pedal assembly (71)	Rear clamp only accessible when the defroster vent with trim ring is removed.	
7	Unhook brake cable (85) from tensioning shackle on parking brake pedal (75) and unclip from pedal assembly (71)	Use snap-release tool (043). Installation: Check that rubber ring (85c) is correctly seated.	*129589116300
8	Remove bolts (72) and take off pedal assembly (71) GF Friction brake pedal assembly / parking brake, function	Push pedal assembly (71) inwards slightly and remove from cover (76a). Do not loosen Torx bolts on the back of the pedal assembly (71), otherwise the pedal assembly (71) will be damaged beyond repair. 	*BA42.20-P-1001-01A GF42.20-P-1000A
9	Detach control cable (79) for releasing parking brake WF Tool for releasing parking brake control cable	To do so, remove bracket (77a) and unhook cable (79) from release lever (77). Unclip control cable (79) from pedal assembly (71) using tool (010).	WF58.50-P-4220-01A
10	Install in the reverse order		
11	Slacken automatic cable slack adjuster (92)		AR42.20-P-0520-02A
12	Check version of pedal assembly (71) BT	See: ↓ Parking brake pedal assembly modified	BT42.20-P-0510-01A
13	Operate parking brake pedal (75) several times and check pedal travel of parking brake pedal (75)	If the pedal travel is not within the tolerance range: ↓ Adjust parking brake Actuating force on parking brake pedal Notches through which the parking brake pedal must be depressed	AR42.20-P-0540I *BE42.20-P-1001-01C *BE42.20-P-1002-01C

Adjustment values for parking brake

Number	Designation		Model 215, Pedal assembly with pulled notch	Model 215, Pedal assembly with pushed notch
BE42.20-P-1001-01C	Actuating force on parking brake pedal	O	170 (-50/+70)	170 (-50/+70)
BE42.20-P-1002-01C	Notches through which the parking brake pedal must be depressed	Quantity	1	5
		See fig.	BT42.20-P-0510-01A	BT42.20-P-0510-01A

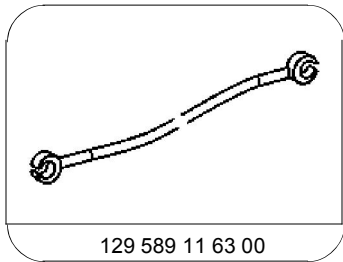
Adjustment values for parking brake

Number	Designation		Model 220, Pedal assembly with pulled notch	Model 220, Pedal assembly with pushed notch
--------	-------------	--	---	---

BE42.20-P-1001-01C	Actuating force on parking brake pedal	O	170 (-50/+70)	170 (-50/+70)
BE42.20-P-1002-01C	Notches through which the parking brake pedal must be depressed	Quantity	1	5
		See fig.	BT42.20-P-0510-01 A	&2.(BT42.20-P-0510-01A)

Nm Parking brake

Number	Designation		Model	Model
			215	220
BA42.20-P-1001-01A	Bolt, foot-operated parking brake pedal assembly at front wall pillar	Nm	12	12



Snap-release tool