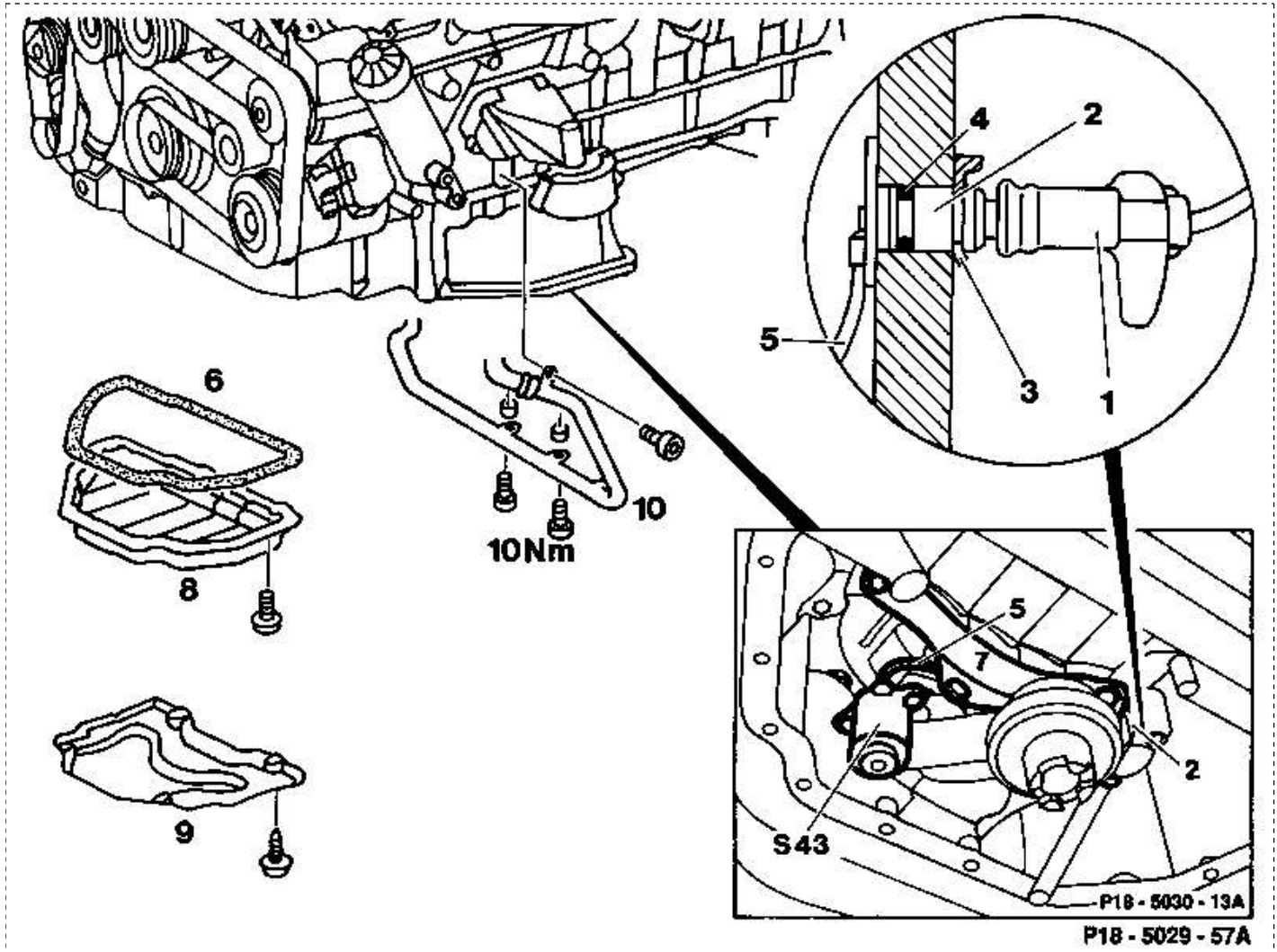


18-3300 Removing and installing oil level sensor

Preceding work:
 Bottom engine compartment panel removed
 (Maint. Man. 6190).
 Drain engine oil (18-0020).

Operation no. of the operation texts and work units
 or standard texts and flat rates.....18-4111, 4113



Model 140

- Model 140: line for secondary air injection (10)..... unscrew below left engine support and oil pan bottom section (8), screw on (10 Nm).
- Cable connector for electrical line for oil pressure sensor..... disconnect from oil pan bottom section, reconnect.
- Oil pan bottom section (8)..... unscrew, remove, install (10 Nm).
- Gasket (6)..... replace, if required.
- Plug (1), oil level sensor (S43)..... disconnect from oil pan, right, reconnect.
- Snap ring (3) for pin (2) on plug connector..... pull off, attach.

Model 129: intake manifold support (7)..... remove, install.
Oil level sensor (S43)..... remove together with connecting cable (5) and pin (2) for connector, install (5 Nm).

Installation note

Connection cable (5)..... clip into intake manifold support (7) and oil deflector plate.

O-ring (4) on pin (2) for connector..... replace.
Engine..... allow to run, check for leakage.
Leakage..... check.

Special tool

