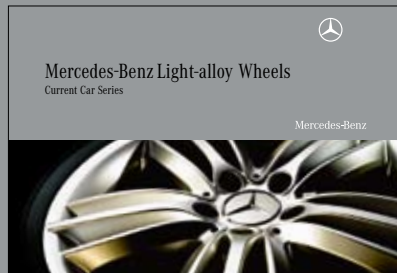


October 2008



Mercedes-Benz and AMG light-alloy wheels for current car series can be found in the brochure shown here. Ask your Mercedes-Benz partner for a copy.

Please note: changes may have been made to the products since this brochure went to press (31.08.2008). The manufacturer reserves the right to make changes to the design, form, colour and specification during the delivery period, provided these changes, while taking into account the interests of the vendor, can be deemed reasonable with respect to the purchaser. Where the vendor or the manufacturer uses symbols or numbers to describe an order or the subject of an order, no rights may be derived solely from these. The illustrations may show accessories and items of optional equipment which are not part of standard specification. Colours may differ slightly from those shown in the brochure, owing to the limitations of the printing process. This brochure is distributed internationally. However, information given regarding statutory regulations, legal requirements and taxation applies only to the Federal Republic of Germany at the time of going to press. Please consult your Mercedes-Benz dealer for final details and for information about the statutory regulations and legal requirements which apply in other countries.

Mercedes-Benz Accessories GmbH, Stuttgart · A Daimler Company  
3230 · 1227 · 02-01/1008 · Printed in the Federal Republic of Germany



# Mercedes-Benz Light-alloy Wheels

Out-of-production Car Series

Mercedes-Benz



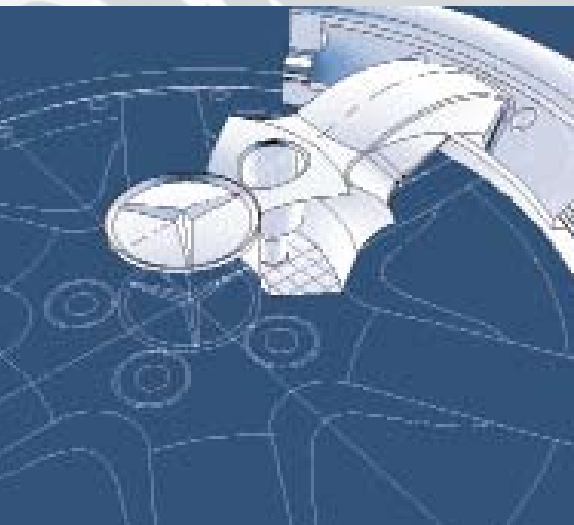
## CONTENTS

<b>DESIGN &amp; TECHNOLOGY</b> HOW WE REINVENTED THE WHEEL	04
A-CLASS	06
C-CLASS SERIES 203	10
C-CLASS SERIES 202	18
E-CLASS	24
S-CLASS	30
SLK	34
CLK	40
SL	46
CL	50
M-CLASS	54
<b>ONLINE WHEEL CONFIGURATOR</b> DREAM COMBINATIONS AT THE CLICK OF A MOUSE	58
<b>FINISHES &amp; WHEEL ACCESSORIES</b> A DAZZLING RANGE OF LOOKS	59





# Mercedes-Benz light-alloy wheels



## Affinity

A Mercedes-Benz light-alloy wheel is developed using the same high-end tools as the vehicle itself. Little wonder, then, that it meets the same quality standards

What our wheel tables tell you:

**16 NUSHABA**

5-spoke wheel

7 J x 16 ET 37 · 205/55 R16

B6 647 0511

Standard silver finish;  
not for SLK 32 AMG

Wheel size in inches | **WHEEL NAME**

Product name

Wheel size · Tyre size

Order number

Additional information

**A word of advice:** because of differences in national regulations, various different versions of each vehicle exist. Please also bear in mind that vehicle development is permanently ongoing. As a result, not all of the wheel/tyre combinations shown in this brochure will be approved for your particular Mercedes-Benz. Your Mercedes-Benz dealer, however, has access to constantly updated information on every Mercedes-Benz wheel, including the relevant technical inspection findings and licensing conditions, and will be happy to advise you.

With low-profile tyres, wheels, tyres and parts of the suspension are subject to higher loads and are generally, therefore, more susceptible to damage, e.g. from uneven road surfaces.

# How we reinvented the wheel

With every gram saved, the engineers move a step closer to the ideal wheel. Using state-of-the-art 3D computers they devise test parts and subject them to intensive trials.

The targets are absolute true running, high thermal conduction, optimum brake ventilation – and of course top quality.



## Inner and outer values

The thrilling design of the star-branded wheels builds on the design idiom of the vehicles themselves.

Assert your own distinctive style. With Mercedes-Benz light-alloy wheels

## Acid test

On test rigs, on racetracks and in long-term on-road use every design has to prove that it can cope with many times the prescribed load

**incenio**  
DESIGNER WHEELS FROM MERCEDES-BENZ



# A-Class

SERIES I68  
MODELS UP TO 09/2004



**incenio** designer wheel

**17** | **ALSHAIN**

7-spoke wheel

7 J x 17 ET 57 · FA 205/40 R17 MO

B6 647 1512

Sterling silver finish; not compatible with snow chains

**17** |

7 J x 17 ET 49 · RA 205/40 R17 MO

B6 647 1513

Sterling silver finish

**incenio** designer wheel

**17** | **SERTAN**

3-twin-spoke wheel  
multi-piece

7 J x 17 ET 57 · FA 205/40 R17 MO

B6 647 1601

Sterling silver finish, high-sheen rim flange; not compatible with snow chains

**17** |

7 J x 17 ET 49 · RA 205/40 R17 MO

B6 647 1602

Sterling silver finish, high-sheen rim flange

**incenio** designer wheel

**16** | **TAYGETA**

Y-spoke wheel

6.5 J x 16 ET 56 · 205/45 R16 MO

B6 647 1631

Sterling silver finish; not compatible with snow chains



Wheel bolts: B6 647 0133 | Rim lock: B6 647 0143



**LIGHT-ALLOY WHEELS  
STANDARD AND OPTIONAL EQUIPMENT**



**16 SHAULA**  
5-spoke wheel  
6.5 J x 16 ET 56 · 205/45 R16 M0  
B6 647 1391  
Sterling silver finish; not compatible with snow chains



**16 5-SPOKE WHEEL**  
6.5 J x 16 ET 56 · 205/45 R16 M0  
B6 647 4226  
Titanium silver finish; not compatible with snow chains



**16 MERAK**  
5-hole wheel  
5.5 J x 16 ET 54 · 195/50 R16 M0  
B6 647 0864  
Standard silver finish; for A 190 and A 210 only; not with standard 15" tyres



**16 ALGEBAR**  
5-spoke wheel  
5.5 J x 16 ET 54 · 195/50 R16 M0  
B6 647 1362  
Standard silver finish; for A 190 and A 210 only; not with standard 15" tyres; only snow chain B6 758 0231 compatible



**16 SUHAIL**  
5-hole wheel  
5.5 J x 16 ET 54 · 195/50 R16 M0  
B6 647 4001  
Standard silver finish; only for A 190, A 210 and A 160 CDI (Germany) from 01/01



**16 GIENAH**  
10-hole wheel  
5.5 J x 16 ET 54 · 195/50 R16 M0  
B6 647 4201  
Standard silver finish; only for A 190, A 210 and A 160 CDI (Germany) from 01/01

**15**  
5.5 J x 15 ET 54 · 195/50 R15  
B6 647 0534

Standard silver finish, high-sheen rim flange; not for A 190 or A 210; not with optional extra Code U 05

**15**  
5.5 J x 15 ET 54 · 195/50 R15  
B6 647 0555

Standard silver finish; not for A 190 or A 210; not with optional extra Code U 05

**15**  
5.5 J x 15 ET 54 · 195/50 R15  
B6 647 0538\*

Standard silver finish; not for A 190 or A 210; not with optional extra Code U 05  
\*Variation with high-sheen finish  
B6 647 0724

**15**  
5.5 J x 15 ET 54 · 195/50 R15  
B6 647 4000

Standard silver finish; not for A 190 or A 210; not with optional extra Code U 05

**15**  
5.5 J x 15 ET 54 · 195/50 R15  
B6 647 4200

Standard silver finish; not for A 190 or A 210; not with optional extra Code U 05



**15 ALWAID**

5-hole wheel

5.5 J x 15 ET 54 · 195/50 R15

B6 647 0519

Standard silver finish; not for A 190 or A 210; not with optional extra Code U 05



**15 MEREZ**

6-spoke wheel

5.5 J x 15 ET 54 · 195/50 R15

B6 647 1791

Sterling silver finish; not for A 190 or A 210; not with optional extra Code U 05



**15 ENIR**

4-hole wheel

5.5 J x 15 ET 54 · 195/50 R15

B6 647 1571

Standard silver finish; not for A 190 or A 210; not with optional extra Code U 05



**17 STYLE I**

AMG 5-spoke wheel

7 J x 17 ET 57 · FA 205/40 R17

B6 603 1017

High-sheen rim flange

**17**

7 J x 17 ET 57 · FA 205/40 R17

B6 603 1131

Sterling silver finish

**17**

7 J x 17 ET 49 · RA 205/40 R17

B6 603 1015

High-sheen rim flange

**17**

7 J x 17 ET 49 · RA 205/40 R17

B6 603 1132

Sterling silver finish

For technical reasons and as a result of differences in local legislation, not every wheel model will be suitable for your particular vehicle. Ask your Mercedes-Benz dealer for the latest information on the wheel of your choice (see also page 4).



**incenio** designer wheel

**17 HOEDUS**

6-spoke wheel

7.5 J x 17 ET 36 · 225/45 R17

B6 647 4319\*

Sterling silver finish

\*Variation with titanium silver finish  
B6 647 4413

**17**

8.5 J x 17 ET 34 · RA 245/40 R17

B6 647 4320\*

Sterling silver finish; not compatible  
with snow chains

\*Variation with titanium silver finish  
B6 647 4415

SERIES 203  
SALOON FROM 05/2000  
ESTATE, SPORTS COUPÉ FROM 03/2001

**incenio** designer wheel

**16** | **CHERTAN**

5-spoke wheel

7 J x 16 ET 31 · 205/55 R16

B6 647 1913

Sterling silver finish; not in conjunction with optional extra Code 949/950; not for C 350, C 320 CDI or C 350 4MATIC

**16** |

8 J x 16 ET 32 · RA 225/50 R16

B6 647 1914

Sterling silver finish; not in conjunction with optional extra Code 949/950; not for C 350, C 320 CDI or C 350 4MATIC



**incenio** designer wheel

**18** | **SADACHIBA**

5-spoke wheel  
multi-piece

7.5 J x 18 ET 37 · 225/40 R18

B6 647 0600

Titanium silver finish, high-sheen; only in conjunction with optional extra Code 486 (sports suspension) or optional extra Code 949/950 (sports package) except C 280, C 280 4MATIC, C 320 CDI, C 350 and C 350 4MATIC; not compatible with snow chains

**incenio** designer wheel

**17** | **CELAENO**

7-twin-spoke wheel

7.5 J x 17 ET 37 · 225/45 R17

B6 647 1821

Sterling silver finish; not compatible with optional extra Code 949/950; not for C 350, C 320 CDI or C 350 4MATIC



**incenio** designer wheel

**16 | SARGAS**

5-twin-spoke wheel

7 J x 16 ET 37 · 205/55 R16

B6 647 1542

Sterling silver finish; not in conjunction with optional extra Code 949/950; not for C 350, C 320 CDI or C 350 4MATIC



**incenio** designer wheel

**17 | SAIDAK**

5-twin-spoke wheel  
multi-piece

7.5 J x 17 ET 37 · 225/45 R17

B6 647 1671

Sterling silver finish; not in conjunction with optional extra Code 949/950; not for C 350, C 320 CDI or C 350 4MATIC



**incenio** designer wheel

**18 | ALRESHA**

Multi-spoke exclusive  
forged wheel

7.5 J x 18 ET 37 · 225/40 R18

B6 647 4242

Two-tone finish, anthracite/high-gloss polished; only in conjunction with optional extra Code 486 (sports suspension) or optional extra Code 949/950 (sports package) except C 280, C 280 4MATIC, C 320 CDI, C 350 and C 350 4MATIC; not compatible with snow chains

SERIES 203  
SALOON FROM 05/2000  
ESTATE, SPORTS COUPÉ FROM 03/2001



**incenio** designer wheel

**17 ALSHAIN**

7-spoke wheel

7.5 J x 17 ET 37 · 225/45 R17

B6 647 1511\*

Sterling silver finish; not with optional extra Code 949/950 (except: Sports Coupé with EVOLUTION sports package); not for C 350, C 320 CDI or C 350 4MATIC

\*Variation with titanium silver finish  
B6 647 4411

**17**

8.5 J x 17 ET 34 · RA 245/40 R17

B6 647 1515\*

Sterling silver finish; not with optional extra Code 949/950 (except: Sports Coupé with EVOLUTION sports package); not compatible with snow chains; not for C 350, C 320 CDI or C 350 4MATIC

\*Variation with titanium silver finish  
B6 647 4412



**17 ADHARAZ**

5-spoke wheel

7.5 J x 17 ET 36 · 225/45 R17

B6 647 1702\*

Sterling silver finish

\*Variation with titanium silver finish  
B6 647 4418



**17 7-TWIN-SPOKE WHEEL**

7.5 J x 17 ET 36 · 225/45 R17

B6 647 4263

Sterling silver finish

**17**

8.5 J x 17 ET 34 · RA 245/40 R17

B6 647 4250\*

Sterling silver finish; not compatible with snow chains

\*Variation with titanium silver finish  
B6 647 4414

**17**

8.5 J x 17 ET 34 · RA 245/40 R17

B6 647 4264

Sterling silver finish; not compatible with snow chains

For technical reasons and as a result of differences in local legislation, not every wheel model will be suitable for your particular vehicle. Ask your Mercedes-Benz dealer for the latest information on the wheel of your choice (see also page 4).

Wheel bolts: B6 647 0133 | Rim lock: B6 647 0143

LIGHT-ALLOY WHEELS  
STANDARD AND OPTIONAL EQUIPMENT



**17** 5-SPOKE WHEEL

7.5 J x 17 ET 36 · 225/45 R17

B6 647 0609

Titanium silver finish



**17** 7-HOLE WHEEL

7.5 J x 17 ET 36 · 225/45 R17

B6 647 1055

Titanium silver finish



**16** 7-SPOKE WHEEL

7 J x 16 ET 31 · 205/55 R16

B6 647 0766

Titanium silver finish; not in conjunction with Code 949/950; not for C 350, C 320 CDI or C 350 4MATIC



**16** ALGIEBA

5-hole wheel

7 J x 16 ET 37 · 205/55 R16\*

B6 647 0987\*

High-sheen finish; ■ also 225/50 R16; not in conjunction with optional extra Code 949/950; not for C 350, C 320 CDI or C 350 4MATIC

\*Variation with titanium silver finish  
B6 647 4231



**16** ELECTRA

5-twin-spoke wheel

7 J x 16 ET 37 · 205/55 R16\*

B6 647 2120

Standard silver finish; ■ also 225/50 R16; not in conjunction with optional extra Code 949/950; not for C 350, C 320 CDI or C 350 4MATIC

**17**

8.5 J x 17 ET 34 · RA 245/40 R17

B6 647 0610

Titanium silver finish; not compatible with snow chains

**16**

8 J x 16 ET 32 · RA 225/50 R16

B6 647 0608

Titanium silver finish; not in conjunction with Code 949/950; not for C 350, C 320 CDI or C 350 4MATIC

**16**

7 J x 16 ET 31 · 205/55 R16

B6 647 1053

Titanium silver finish; not in conjunction with Code 949/950; not for C 350, C 320 CDI or C 350 4MATIC

**16**

8 J x 16 ET 32 · RA 225/50 R16

B6 647 2121

Standard silver finish; not in conjunction with optional extra Code 949/950; not for C 350, C 320 CDI or C 350 4MATIC

SERIES 203  
SALOON FROM 05/2000  
ESTATE, SPORTS COUPÉ FROM 03/2001



**15** ELNATH

7-hole wheel

6 J x 15 ET 31 · 195/65 R15

B6 647 0991

Standard silver finish; only for C 200 CDI, C 220 CDI, C 180, C 180 Kompressor, C 200 Kompressor, C 200 CGI; not in conjunction with optional extra Code 949/950; models up to 03/04 only

**16**

7 J x 16 ET 37 · 205/55 R16<sup>■</sup>

B6 647 0992

Standard silver finish; <sup>■</sup>also 225/50 R16; not in conjunction with optional extra Code 949/950; not for C 350, C 320 CDI or C 350 4MATIC



**15** COR CAROLI

7-spoke wheel

6 J x 15 ET 31 · 195/65 R15

B6 647 2124

Standard silver finish; only for C 200 CDI, C 220 CDI, C 180, C 180 Kompressor, C 200 Kompressor, C 200 CGI; not in conjunction with optional extra Code 949/950; models up to 03/04 only



**17** STYLE I

AMG 5-spoke wheel

7.5 J x 17 ET 37 · 225/45 R17

B6 603 1005

High-sheen rim flange; not for C 32 AMG, for C 30 CDI AMG, C 55 AMG and W/S with Code 949 or 950

**17**

8.5 J x 17 ET 30 · RA 245/40 R17

B6 603 1006

High-sheen rim flange; not for C 32 AMG, for C 30 CDI AMG, C 55 AMG and W/S with Code 949 or 950; modification of bodywork necessary



**18** STYLE II

AMG spoke wheel

8 J x 18 ET 31 · 225/40 R18

B6 603 1007

High-sheen rim flange; not for C 32 AMG, for C 30 CDI AMG, C 55 AMG and W/S with Code 949 or 950

**18**

9 J x 18 ET 35 · RA 255/35 R18

B6 603 1001

High-sheen rim flange; not for C 32 AMG, for C 30 CDI AMG, C 55 AMG and W/S with Code 949 or 950; modification of bodywork necessary

**17**

7.5 J x 17 ET 35 · 225/45 R17

B6 602 0083

High-sheen rim flange; not for C 32 AMG, for C 30 CDI AMG, C 55 AMG and W/S with Code 949 or 950

**17**

8.5 J x 17 ET 30 · RA 245/40 R17

B6 602 0085

High-sheen rim flange; not for C 32 AMG, for C 30 CDI AMG, C 55 AMG and W/S with Code 949 or 950; modification of bodywork necessary

For technical reasons and as a result of differences in local legislation, not every wheel model will be suitable for your particular vehicle. Ask your Mercedes-Benz dealer for the latest information on the wheel of your choice (see also page 4).



AMG  
LIGHT-ALLOY WHEELS



**18** **STYLE III**  
AMG 5-spoke wheel  
7.5 J x 18 ET 37 · 225/40 R18  
B6 603 1181  
Sterling silver finish

**18**  
8.5 J x 18 ET 30 · RA 245/35 R18  
B6 603 1182  
Sterling silver finish; not for 4MATIC;  
modification of bodywork necessary



**17**  
7.5 J x 17 ET 37 · 225/45 R17  
B6 603 1183\*  
Sterling silver finish  
\*High-sheen rim flange B6 603 1028

**17**  
8.5 J x 17 ET 34 · RA 245/40 R17  
B6 603 1185  
Sterling silver finish

**17**  
8.5 J x 17 ET 30 · RA 245/40 R17  
B6 603 1184\*  
Sterling silver finish; modification  
of bodywork necessary  
\*High-sheen rim flange B6 603 1029



**18** **STYLE III**  
AMG 5-spoke wheel  
multi-piece  
7.5 J x 18 ET 37 · 225/40 R18  
B6 603 1045  
High-sheen rim flange

**18**  
8.5 J x 18 ET 34 · RA 245/35 R18  
B6 603 1046  
High-sheen rim flange; not for  
4MATIC



**17** **STYLE III**  
AMG 5-spoke wheel  
multi-piece  
7.5 J x 17 ET 37 · 225/45 R17  
B6 603 1030  
High-sheen rim flange

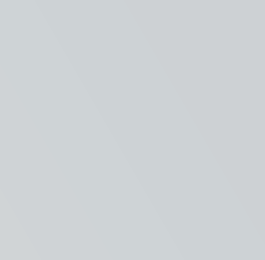
**17**  
8.5 J x 17 ET 34 · RA 245/40 R17  
B6 603 1031  
High-sheen rim flange



**18** **STYLE III**  
AMG 5-spoke wheel  
7.5 J x 18 ET 37 · 225/40 R18  
B6 603 1447  
Titanium silver finish

**18**  
8.5 J x 18 ET 34 · RA 245/35 R18  
B6 603 1452  
Titanium silver finish; not for 4MATIC

**18**  
8.5 J x 18 ET 30 · RA 245/35 R18  
B6 603 1448  
Titanium silver finish; not for 4MATIC;  
modification of bodywork necessary



**17** **STYLE III**  
AMG 5-spoke wheel  
7.5 J x 17 ET 37 · 225/45 R17  
B6 603 1445  
Titanium silver finish

**17**  
8.5 J x 17 ET 34 · RA 245/40 R17  
B6 603 1451  
Titanium silver finish

**17**  
8.5 J x 17 ET 30 · RA 245/40 R17  
B6 603 1446  
Titanium silver finish; modification  
of bodywork necessary

SERIES 203  
SALOON FROM 05/2000  
ESTATE, SPORTS COUPÉ FROM 03/2001



**17** **STYLE IV**

AMG twin-spoke wheel  
7.5 J x 17 ET 37 · 225/45 R17  
B6 603 1026  
Sterling silver finish



**18** **STYLE IV**

AMG twin-spoke wheel  
7.5 J x 18 ET 37 · 225/40 R18  
B6 603 1310  
Sterling silver finish



**18** **STYLE IV**

AMG twin-spoke wheel  
multi-piece  
7.5 J x 18 ET 37 · 225/40 R18  
B6 603 1368  
Sterling silver finish



**18** **STYLE V**

AMG multi-spoke wheel  
7.5 J x 18 ET 37 · 225/40 R18  
B6 603 1113  
Silver finish, high-sheen

**17**

8.5 J x 17 ET 34 · RA 245/40 R17  
B6 603 1027  
Sterling silver finish

**18**

8.5 J x 18 ET 34 · RA 245/35 R18  
B6 603 1342  
Sterling silver finish; not for 4MATIC

**17**

8.5 J x 17 ET 34 · RA 245/40 R17  
B6 603 1340  
Sterling silver finish

**18**

8.5 J x 18 ET 30 · RA 245/35 R18  
B6 603 1362  
Sterling silver finish; not for 4MATIC;  
modification of bodywork necessary

**18**

8.5 J x 18 ET 30 · RA 245/35 R18  
B6 603 1114  
Silver finish, high-sheen; not for  
4MATIC; modification of bodywork  
necessary

**18**

8.5 J x 18 ET 30 · RA 245/35 R18  
B6 603 1305  
Sterling silver finish; not for 4MATIC;  
modification of bodywork necessary

**17**

8.5 J x 17 ET 30 · RA 245/40 R17  
B6 603 1303  
Sterling silver finish; modification  
of bodywork necessary

For technical reasons and as a result of differences in local legislation, not every wheel model will be suitable for your particular vehicle. Ask your Mercedes-Benz dealer for the latest information on the wheel of your choice (see also page 4).



**incenio** designer wheel

**17 SAIDAK**

5-twin-spoke wheel  
multi-piece

7.5 J x 17 ET 37 · 225/45 R17

B6 647 1671

Sterling silver finish; increased rear-axle load not possible for Estate with trailer; modification of bodywork necessary; not for C 36 AMG, C 43 AMG

**17**

8.5 J x 17 ET 30 · RA 245/40 R17

B6 647 1672

Sterling silver finish; only for models up to 04/02 (Saloon); models up to 02/01 (Estate); not compatible with snow chains

## incenio designer wheel

### 17 ALSHAIN

7-spoke wheel

7.5 J x 17 ET 37 · 225/45 R17

B6 647 1511

Sterling silver finish; modification of bodywork necessary; not for C 36 AMG or C 43 AMG



## incenio designer wheel

### 16 SARGAS

5-twin-spoke wheel

7 J x 16 ET 37 · 205/55 R16

B6 647 1542

Sterling silver finish; only with rim weights (3 mm)



## incenio designer wheel

### 16 NUSHABA

5-spoke wheel

7 J x 16 ET 37 · 205/55 R16

B6 647 0511

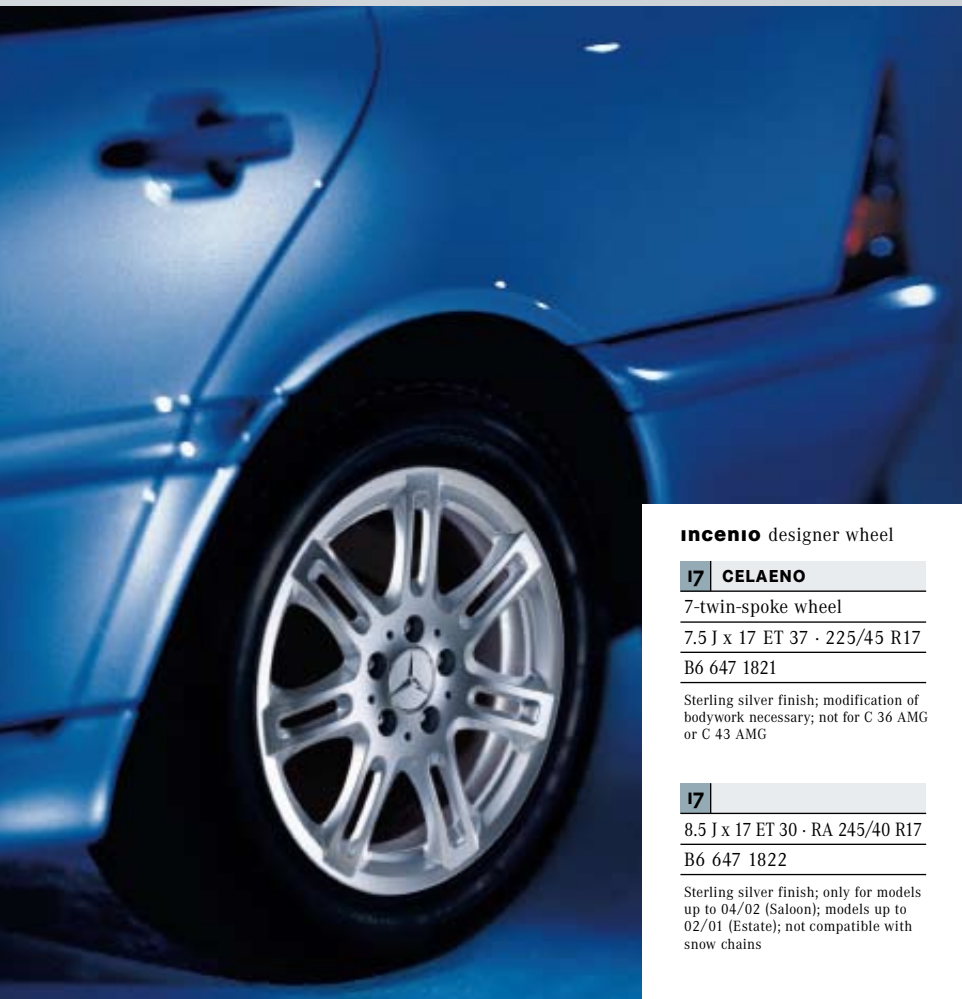
Standard silver finish

### 16

8 J x 16 ET 36 · RA 225/50 R16

B6 647 0512

Standard silver finish; not compatible with snow chains



**incenio** designer wheel

**17 CELAENO**

7-twin-spoke wheel

7.5 J x 17 ET 37 · 225/45 R17

B6 647 1821

Sterling silver finish; modification of bodywork necessary; not for C 36 AMG or C 43 AMG

**17**

8.5 J x 17 ET 30 · RA 245/40 R17

B6 647 1822

Sterling silver finish; only for models up to 04/02 (Saloon); models up to 02/01 (Estate); not compatible with snow chains

**incenio** designer wheel

**17 CEGINUS**

EVO II wheel

7.5 J x 17 ET 37 · 225/45 R17

B6 647 0518

High-shine finish; modification of bodywork necessary; not for C 36 AMG or C 43 AMG



**incenio** designer wheel

**17 TUREIS**

5-spoke wheel

7.5 J x 17 ET 37 · 225/45 R17

B6 647 0513

Standard silver finish; modification of bodywork necessary; not for C 36 AMG or C 43 AMG



**16 LUCIDA**

6-hole wheel

7 J x 16 ET 37 · 205/55 R16

B6 647 1481

High-sheen finish



**16 MERAK**

5-hole wheel

7 J x 16 ET 37 · 205/55 R16

B6 647 0522

Standard silver finish



**16 CORVUS**

6-spoke wheel

7 J x 16 ET 37 · 205/55 R16

B6 647 0523

Standard silver finish



**15 ERAKIS**

5-spoke wheel

7 J x 15 ET 37 · 205/60 R15

B6 647 0504

Standard silver finish



**15 MIRAC**

5-star wheel

7 J x 15 ET 37 · 205/60 R15

B6 647 0500

Standard silver finish



**15 DENE B**

8-hole wheel

6.5 J x 15 ET 37 · 195/65 R15

B6 647 0065

Standard silver finish

**16**

8 J x 16 ET 36 · RA 225/50 R16

B6 647 0526

Standard silver finish; not compatible with snow chains

**15**

7 J x 15 ET 37 · 205/60 R15

B6 647 0066

Standard silver finish; as replacement wheel only; models up to 09/95

**15**

7 J x 15 ET 37 · 205/60 R15

B6 647 0525

High-sheen finish

For technical reasons and as a result of differences in local legislation, not every wheel model will be suitable for your particular vehicle. Ask your Mercedes-Benz dealer for the latest information on the wheel of your choice (see also page 4).

LIGHT-ALLOY WHEELS  
STANDARD AND OPTIONAL EQUIPMENT

AMG  
LIGHT-ALLOY WHEELS



**15 ALRAMI**  
6-hole wheel  
6.5 J x 15 ET 37 · 195/65 R15  
B6 647 0075  
Standard silver finish

**15**  
7 J x 15 ET 37 · 205/60 R15  
B6 647 0076  
Standard silver finish



**17 STYLE I**  
AMG 5-spoke wheel  
7.5 J x 17 ET 37 · 225/45 R17  
B6 603 1005  
High-shine rim flange; modification of bodywork necessary

**17**  
8.5 J x 17 ET 30 · RA 245/40 R17  
B6 603 1006  
High-shine rim flange



**17 STYLE II**  
AMG disc wheel  
7.5 J x 17 ET 35 · 225/45 R17  
B6 602 0083  
High-shine rim flange; modification of bodywork necessary

**17**  
8.5 J x 17 ET 30 · RA 245/40 R17  
B6 602 0085  
High-shine rim flange



**18 STYLE III**  
AMG 5-spoke wheel  
7.5 J x 18 ET 37 · 225/40 R18  
B6 603 1181  
Sterling silver finish; modification of bodywork necessary

**18**  
8.5 J x 18 ET 30 · RA 255/35 R18  
B6 603 1182  
Sterling silver finish; modification of bodywork necessary

**17**  
7.5 J x 17 ET 37 · 225/45 R17  
B6 603 1183\*  
Sterling silver finish; modification of bodywork necessary  
\*High-shine rim flange B6 603 1028

**17**  
8.5 J x 17 ET 30 · RA 245/40 R17  
B6 603 1184\*  
Sterling silver finish  
\*High-shine rim flange B6 603 1029



**18 STYLE III**  
AMG 5-spoke wheel multi-piece  
7.5 J x 18 ET 37 · 225/40 R18  
B6 603 1045  
High-shine rim flange; modification of bodywork necessary

**18**  
8.5 J x 18 ET 34 · RA 255/35 R18  
B6 603 1046  
High-shine rim flange; modification of bodywork necessary

For technical reasons and as a result of differences in local legislation, not every wheel model will be suitable for your particular vehicle. Ask your Mercedes-Benz dealer for the latest information on the wheel of your choice (see also page 4).



**17** **STYLE III**

AMG 5-spoke wheel  
multi-piece

7.5 J x 17 ET 37 · 225/45 R17

B6 603 1030

High-sheen rim flange; modification  
of bodywork necessary



**18** **STYLE III**

AMG 5-spoke wheel

7.5 J x 18 ET 37 · 225/40 R18

B6 603 1447

Titanium silver finish; modification  
of bodywork necessary



**17** **STYLE IV**

AMG twin-spoke wheel

7.5 J x 17 ET 37 · 225/45 R17

B6 603 1026

Sterling silver finish; modification  
of bodywork necessary



**18** **STYLE IV**

AMG twin-spoke wheel  
multi-piece

7.5 J x 18 ET 37 · 225/40 R18

B6 603 1368

Sterling silver finish; modification  
of bodywork necessary



**18** **STYLE IV**

AMG twin-spoke wheel

7.5 J x 18 ET 37 · 225/40 R18

B6 603 1310

Sterling silver finish; modification  
of bodywork necessary



**18** **STYLE V**

AMG multi-spoke wheel

7.5 J x 18 ET 37 · 225/40 R18

B6 603 1113

Silver finish, high-sheen; modification  
of bodywork necessary

**17**

8.5 J x 17 ET 34 · RA 245/40 R17

B6 603 1031

High-sheen rim flange

**18**

8.5 J x 18 ET 30 · RA 255/35 R18

B6 603 1448

Titanium silver finish; modification  
of bodywork necessary

**17**

8.5 J x 17 ET 34 · RA 245/40 R17

B6 603 1027

Sterling silver finish

**18**

8.5 J x 18 ET 30 · RA 255/35 R18

B6 603 1362

Sterling silver finish; modification  
of bodywork necessary

**18**

8.5 J x 18 ET 30 · RA 255/35 R18

B6 603 1305

Sterling silver finish; modification  
of bodywork necessary

**18**

8.5 J x 18 ET 30 · RA 255/35 R18

B6 603 1114

Silver finish, high-sheen; modification  
of bodywork necessary

**17**

7.5 J x 17 ET 37 · 225/45 R17

B6 603 1445

Titanium silver finish; modification  
of bodywork necessary

**17**

7.5 J x 17 ET 37 · 225/45 R17

B6 603 1302

Sterling silver finish; modification  
of bodywork necessary

**17**

8.5 J x 17 ET 30 · RA 245/40 R17

B6 603 1446

Titanium silver finish

**17**

8.5 J x 17 ET 30 · RA 245/40 R17

B6 603 1303

Sterling silver finish



**incenio**  
DESIGNER WHEELS FROM MERCEDES-BENZ





**incenio** designer wheel

**17 SAIDAK**

5-twin-spoke wheel  
multi-piece

7.5 J x 17 ET 37 · 235/45 R17

B6 647 1671

Sterling silver finish; not for E 50 AMG,  
E 55 with rim weights (3mm); increased  
rear-axle load not possible for Estate  
with trailer



**incenio** designer wheel

**17 TARAZED**

9-spoke wheel

8 J x 17 ET 37 · 235/45 R17

B6 647 1851

Sterling silver finish; not for E 50 AMG,  
E 55 with rim weights (3 mm); increased  
rear-axle load not possible for Estate  
with trailer



**incenio** designer wheel

**17 CELAENO**

7-twin-spoke wheel

7.5 J x 17 ET 37 · 235/45 R17

B6 647 1821

Sterling silver finish; not for E 50 AMG,  
E 55 with rim weights (3 mm); increased  
rear-axle load not possible for Estate  
with trailer

**incenio** designer wheel

**17 ALSHAIN**

7-spoke wheel

7.5 J x 17 ET 37 · 235/45 R17

B6 647 1511

Sterling silver finish; not for E 50 AMG,  
E 55 with rim weights (3 mm); increased  
rear-axle load not possible for Estate  
with trailer



**incenio** designer wheel

**17 ALHENA**

5-hole wheel

7.5 J x 17 ET 37 · 235/45 R17

B6 647 4020

High-shine finish; not for E 50 AMG; E 55 with rim weights (3 mm); increased rear-axle load not possible for Estate with trailer



**incenio** designer wheel

**17 TUREIS**

5-spoke wheel

7.5 J x 17 ET 37 · 235/45 R17

B6 647 0513

Sterling silver finish; not for E 430 from 01/99, E 50 AMG or E 55 AMG; increased rear-axle load not possible for Estate with trailer



**incenio** designer wheel

**16 FIDIS**

6-hole wheel

7.5 J x 16 ET 41 · 215/55 R16

B6 647 1731

Sterling silver finish; not for E 430 from 01/99, E 50 AMG or E 55 AMG



**incenio** designer wheel

**17 CEGINUS**

EVO II wheel

7.5 J x 17 ET 37 · 235/45 R17

B6 647 0518

High-shine finish; not for E 420, E 430, E 50 AMG or E 55 AMG; increased rear-axle load not possible for Estate with trailer





**17 SADOR**

5-spoke wheel

8 J x 17 ET 37 · 235/45 R17

B6 647 0703

High-shine finish; not for E 50 AMG; E 55 with rim weights (3 mm); increased rear-axle load not possible for Estate with trailer



**17 MEKAB**

5-hole wheel

7.5 J x 17 ET 37 · 235/45 R17

B6 647 0862

High-shine rim flange; not for E 50 AMG; E 55 with rim weights (3mm); increased rear-axle load not possible for Estate with trailer



**17 MIRZAM**

7-spoke wheel

7.5 J x 17 ET 37 · 235/45 R17

B6 647 1332

Standard silver finish; not for E 50 AMG; E 55 with rim weights (3 mm); increased rear-axle load not possible for Estate with trailer



**17 ZOSCA**

5-spoke wheel

7.5 J x 17 ET 35 · 235/45 R17

B6 647 0077

Standard silver finish; not for E 200, E 230, E 240 without ESP, E 200 CDI, E 220 Diesel, E 220 CDI, E 250 Diesel, E 250 Turbodiesel, E 290 Turbodiesel, E 300 D



**17 ALGENIB**

11-hole wheel

7.5 J x 17 ET 37 · 235/45 R17

B6 647 1302

Standard silver finish; not for E 50 AMG; E 55 with rim weights (3 mm); increased rear-axle load not possible for Estate with trailer

**16**

7.5 J x 16 ET 41 · 215/55 R16

B6 647 0861

High-shine rim flange; not for E 430 from 01/99, E 50 AMG, E 55 AMG

**15**

6.5 J x 15 ET 37 · 195/65 R15

B6 647 0073

Standard silver finish; vehicles without ESP only

**16**

7.5 J x 16 ET 41 · 215/55 R16

B6 647 1301

Standard silver finish; not for E 430 from 01/99, E 50 AMG, E 55 AMG

**15**

7 J x 15 ET 37 · 205/65 R15

B6 647 0074

Standard silver finish; vehicles without ESP only

For technical reasons and as a result of differences in local legislation, not every wheel model will be suitable for your particular vehicle. Ask your Mercedes-Benz dealer for the latest information on the wheel of your choice (see also page 4).

LIGHT-ALLOY WHEELS  
STANDARD AND OPTIONAL EQUIPMENT



**16 MIRAC**

5-star wheel

7.5 J x 16 ET 41 · 215/55 R16

B6 647 0501

Standard silver finish; not for E 430  
from 01/99, E 50 AMG, E 55 AMG



**16 MERAK**

5-hole wheel

7.5 J x 16 ET 41 · 215/55 R16

B6 647 0093

Standard silver finish; not for E 430  
from 01/99, E 50 AMG, E 55 AMG



**16 DENEK**

8-hole wheel

7.5 J x 16 ET 41 · 215/55 R16

B6 647 0089

Standard silver finish; not for E 430  
from 01/99, E 50 AMG, E 55 AMG



**15 ERAKIS**

5-spoke wheel

7 J x 15 ET 37 · 205/65 R15

B6 647 0504

Standard silver finish; vehicles  
without ESP only



**15 ALRAMI**

6-hole wheel

6.5 J x 15 ET 37 · 195/65 R15

B6 647 0075

Standard silver finish; vehicles  
without ESP only

**15**

7 J x 15 ET 37 · 205/65 R15

B6 647 0500

Standard silver finish; vehicles  
without ESP only

**15**

6.5 J x 15 ET 37 · 195/65 R15

B6 647 0065

Standard silver finish; not for Estates;  
vehicles without ESP only

**15**

7 J x 15 ET 37 · 205/65 R15

B6 647 0076

Standard silver finish; vehicles  
without ESP only

**15**

7 J x 15 ET 37 · 205/65 R15

B6 647 0088\*

Standard silver finish; vehicles  
without ESP only

\*Variation with high-sheen finish  
B6 647 0525

For technical reasons and as a result of differences in local legislation,  
not every wheel model will be suitable for your particular vehicle.  
Ask your Mercedes-Benz dealer for the latest information on the wheel  
of your choice (see also page 4).



**18** **STYLE II**

AMG disc wheel

8 J x 18 ET 31 · 235/40 R18

B6 603 1007

High-sheen rim flange; modification of bodywork necessary

**18**

9 J x 18 ET 35 · RA 265/35 R18

B6 603 1001

High-sheen rim flange; modification of bodywork necessary

**17**

7.5 J x 17 ET 35 · 235/45 R17

B6 602 0083

High-sheen rim flange

**17**

8.5 J x 17 ET 30 · 235/45 R17

B6 602 0085

High-sheen rim flange; modification of bodywork necessary



**17** **STYLE III**

AMG 5-spoke wheel

7.5 J x 17 ET 37 · 235/45 R17

B6 603 1028\*

High-sheen rim flange

\*Variation with sterling silver finish  
B6 603 1183

**17**

8.5 J x 17 ET 30 · 235/45 R17

B6 603 1029\*

High-sheen rim flange; modification of bodywork necessary

\*Variation with sterling silver finish  
B6 603 1184



**incenio** designer wheel

**18** ALIOTH

5-spoke wheel  
multi-piece

8.5 J x 18 ET 44 · 245/45 R18

B6 647 4100

Sterling silver finish; high-sheen  
rim flange

**18**

9.5 J x 18 ET 46 · RA 275/40 R18 MO

B6 647 4101

Sterling silver finish; high-sheen  
rim flange; models up to 08/02 only;  
only in conjunction with Active Body  
Control (ABC)



**incenio** designer wheel

**17 HEZE**

5-spoke wheel

7.5 J x 17 ET 46 · 225/55 R17

B6 647 4295

Sterling silver finish; not for  
S 600 Biturbo



**incenio** designer wheel

**18 ERIDANUS**

5-twin-spoke wheel

8.5 J x 18 ET 44 · 245/45 R18

B6 647 2122

Sterling silver finish; not for  
S 600 Biturbo



**incenio** designer wheel

**18 ALBIREO**

6-hole wheel  
multi-piece

8 J x 18 ET 44 · 245/45 R18

B6 647 1451

Sterling silver finish; high-shine rim  
flange; not for S 600 Biturbo



**incenio** designer wheel

**18 ALMAAZ**

15-spoke wheel

8.5 J x 18 ET 44 · 245/45 R18

B6 647 4241

Sterling silver finish





**LIGHT-ALLOY WHEELS  
STANDARD AND OPTIONAL EQUIPMENT**



**18 DIFDA**  
5-hole wheel  
8 J x 18 ET 44 · 245/45 R18  
B6 647 1842  
Sterling silver finish; hollow-spoke



**18 SEGIN**  
6-hole wheel  
8 J x 18 ET 44 · 245/45 R18  
B6 647 1483  
High-sheen polished; forged



**17 CARMENTA II**  
7-spoke wheel  
7.5 J x 17 ET 46 · 225/55 R17  
A220 401 3002  
Standard silver finish; not for  
S 600 Biturbo



**16 CARMENTA**  
7-spoke wheel  
7.5 J x 16 ET 46 · 225/60 R16  
B6 647 0544  
Standard silver finish; for models  
up to 08/02



**17 YAD**  
5-twin-spoke wheel  
7.5 J x 17 ET 46 · 225/55 R17  
B6 647 0545  
Standard silver finish; not for  
S 600 Biturbo; not for V6/V8 4MATIC



**17 MISMAR**  
5-twin-spoke wheel  
7.5 J x 17 ET 46 · 225/55 R17  
B6 647 1881  
Standard silver finish; not for  
S 600 Biturbo

**18**  
9 J x 18 ET 46 · RA 265/40 R18  
B6 647 1841  
Sterling silver finish; hollow-spoke;  
not for 4MATIC

**18**  
9 J x 18 ET 46 · RA 265/40 R18  
B6 647 1484  
High-sheen polished; forged;  
not for 4MATIC

**16**  
7.5 J x 16 ET 46 · 225/60 R16  
B6 647 1902  
Standard silver finish; not for  
S 600 Biturbo; not for V6/V8 4MATIC

**18**  
8 J x 18 ET 44 · 245/45 R18  
B6 647 0547  
Standard silver finish; hollow-spoke;  
not for S 600 Biturbo; for models up  
to 08/02

**17**  
7.5 J x 17 ET 46 · 225/55 R17  
B6 647 0546  
High-sheen polished; forged; not for  
S 600 Biturbo

For technical reasons and as a result of differences in local legislation, not every wheel model will be suitable for your particular vehicle. Ask your Mercedes-Benz dealer for the latest information on the wheel of your choice (see also page 4).



**18** STYLE I

AMG 5-spoke wheel

8.5 J x 18 ET 44 · 245/45 R18

B6 603 1037\*

Sterling silver finish; not for S 55 AMG Kompressor, S 600 Biturbo or S 65 AMG

\*High-sheen rim flange B6 603 1012



**18** STYLE III

AMG 5-spoke wheel

8.5 J x 18 ET 44 · 245/45 R18

B6 603 1240

Sterling silver finish; not for S 65 AMG

**18**

9.5 J x 18 ET 46 · RA 275/40 R18

B6 603 1038\*

Sterling silver finish; not for S 55 AMG Kompressor, S 600 Biturbo or S 65 AMG; not for 4MATIC; modification of bodywork necessary

\*High-sheen rim flange B6 603 1013



**19** STYLE III

AMG 5-spoke wheel

8 J x 19 ET 50 · 245/40 R19

B6 603 1228

Sterling silver finish; only for use as spare wheel/winter wheel for S 65 AMG

**19**

8.5 J x 19 ET 44 · 245/40 R19

B6 603 1224\*

Sterling silver finish; not for S 65 AMG; not as FA/RA combination for S 55 Kompressor or S 600 Biturbo

\*High-sheen rim flange B6 603 1022

**19**

9.5 J x 19 ET 46 · RA 275/35 R19

B6 603 1225\*

Sterling silver finish; not for S 65 AMG or 4MATIC; modification of bodywork necessary

\*High-sheen rim flange B6 603 1023



**19** STYLE III

AMG 5-spoke wheel  
multi-piece

8.5 J x 19 ET 44 · 245/40 R19

B6 603 1024

High-sheen rim flange; not for S 65 AMG; not as FA/RA combination for S 55 Kompressor or S 600 Biturbo

**19**

9.5 J x 19 ET 46 · RA 275/35 R19

B6 603 1025

High-sheen rim flange; not for S 65 AMG or 4MATIC; modification of bodywork necessary



**18** STYLE IV

AMG twin-spoke wheel

8.5 J x 18 ET 44 · 245/45 R18

B6 603 1306

Sterling silver finish; not for S 65 AMG

**18**

9 J x 18 ET 44 · RA 265/40 R18

B6 603 1307

Sterling silver finish; not for S 65 AMG; not for 4MATIC; modification of bodywork necessary



**19** STYLE IV

AMG twin-spoke wheel  
multi-piece

8.5 J x 19 ET 44 · 245/40 R19

B6 603 1375\*

Sterling silver finish; not as FA/RA combination for S 55 AMG Kompressor, S 600 Biturbo or S 65 AMG

\*Variation with titanium grey finish B6 603 1364

**19**

9.5 J x 19 ET 46 · RA 275/35 R19

B6 603 1376\*

Sterling silver finish; not for 4MATIC; not for S 65 AMG; modification of bodywork necessary

\*Variation with titanium grey finish B6 603 1365

**incenio**  
DESIGNER WHEELS FROM MERCEDES-BENZ





**incenio** designer wheel

**17 CELAENO**

7-twin-spoke wheel  
7.5 J x 17 ET 37 · 225/45 R17  
B6 647 1821  
Sterling silver finish

**17**

8.5 J x 17 ET 30 · RA 245/40 R17  
B6 647 1822

Sterling silver finish; flaring for wide-base tyres (B6 647 0112, or B6 647 0115 from 03/00 facelift) necessary if not factory-fitted; not compatible with snow chains



**incenio** designer wheel

**17 TUREIS**

5-spoke wheel  
7.5 J x 17 ET 37 · 225/45 R17  
B6 647 0513  
Standard silver finish

**incenio** designer wheel

**17 ALSHAIN**

7-spoke wheel  
7.5 J x 17 ET 37 · 225/45 R17  
B6 647 1511  
Sterling silver finish



**incenio** designer wheel

**17 ALHENA**

5-hole wheel  
7.5 J x 17 ET 37 · 225/45 R17  
B6 647 4020  
High-sheen finish



**incenio** designer wheel

**17 CEGINUS**

EVO II wheel  
7.5 J x 17 ET 37 · 225/45 R17  
B6 647 0518  
High-sheen finish

**incenio**  
DESIGNER WHEELS FROM MERCEDES-BENZ



**incenio** designer wheel

**17 SAIDAK**

5-twin-spoke wheel  
multi-piece

7.5 J x 17 ET 37 · 225/45 R17

B6 647 1671

Sterling silver finish

**17**

8.5 J x 17 ET 30 · RA 245/40 R17

B6 647 1672

Sterling silver finish; flaring for wide-base tyres (B6 647 0112, or B6 647 0115 from 03/00 facelift) necessary if not factory-fitted; not compatible with snow chains



**incenio** designer wheel

**16 SARGAS**

5-twin-spoke wheel

7 J x 16 ET 37 · 205/55 R16

B6 647 1542

Sterling silver finish; not for SLK 32 AMG; only with rim weights (3 mm)

**incenio** designer wheel

**16 ALCYONE**

5-twin-spoke wheel

7 J x 16 ET 37 · 205/55 R16

B6 647 1545

High-sheen finish; not for SLK 32 AMG

**16**

8 J x 16 ET 30 · RA 225/50 R16

B6 647 1546

High-sheen finish; not for SLK 32 AMG; not compatible with snow chains



**incenio** designer wheel

**16 NUSHABA**

5-spoke wheel

7 J x 16 ET 37 · 205/55 R16

B6 647 0511

Standard silver finish; not for SLK 32 AMG

**16**

8 J x 16 ET 36 · RA 225/50 R16

B6 647 0512

Standard silver finish; not for SLK 32 AMG; not compatible with snow chains



**17** **MIRZAM**

7-spoke wheel

7.5 J x 17 ET 37 · 225/45 R17

B6 647 1332

Standard silver finish



**16** **LUCIDA**

6-hole wheel

7 J x 16 ET 37 · 205/55 R16

B6 647 1481

High-shen finish; not for SLK 32 AMG



**16** **ELECTRA**

5-twin-spoke wheel

7 J x 16 ET 37 · 205/55 R16

B6 647 2120

Standard silver finish; not for  
SLK 32 AMG



**16** **ADHARAZ**

5-spoke wheel

7 J x 16 ET 37 · 205/55 R16

B6 647 1392

Standard silver finish; not for  
SLK 32 AMG



**16** **CORVUS**

6-spoke wheel

7 J x 16 ET 37 · 205/55 R16

B6 647 0523

Standard silver finish; not for  
SLK 32 AMG



**16** **PICTOR**

7-hole wheel

7 J x 16 ET 37 · 205/55 R16

B6 647 0509

High-shen finish; not for SLK 32 AMG

**17**

8.5 J x 17 ET 30 · RA 245/40 R17

B6 647 1333

Standard silver finish; flaring for wide-  
base tyres (B6 647 0112, or B6 647 0115  
from 03/00 facelift) necessary if not  
factory-fitted; not compatible with  
snow chains

**16**

8 J x 16 ET 30 · RA 225/50 R16

B6 647 1482

High-shen finish; flaring for wide-  
base tyres (B6 647 0112, or B6 647 0115  
from 03/00 facelift) necessary if not  
factory-fitted; not compatible with  
snow chains; not for SLK 32 AMG

**16**

8 J x 16 ET 30 · RA 225/50 R16

B6 647 1393

Standard silver finish; flaring for wide-  
base tyres (B6 647 0112, or B6 647 0115  
from 03/00 facelift) necessary if not  
factory-fitted; not compatible with  
snow chains; not for SLK 32 AMG

**16**

8 J x 16 ET 36 · RA 225/50 R16

B6 647 0526

Standard silver finish; not compatible  
with snow chains; not for SLK 32 AMG

**16**

8 J x 16 ET 30 · RA 225/50 R16

B6 647 0510

High-shen finish; flaring for wide-  
base tyres (B6 647 0112, or B6 647 0115  
from 03/00 facelift) necessary if not  
factory-fitted; not compatible with  
snow chains; not for SLK 32 AMG

For technical reasons and as a result of differences in local legislation,  
not every wheel model will be suitable for your particular vehicle.  
Ask your Mercedes-Benz dealer for the latest information on the wheel  
of your choice (see also page 4).

AMG  
LIGHT-ALLOY WHEELS



**17** STYLE I

AMG 5-spoke wheel

7.5 J x 17 ET 37 · 225/45 R17

B6 603 1005

High-sheen rim flange



**18** STYLE II

AMG disc wheel

8 J x 18 ET 31 · FA 225/40 R18

B6 603 1007

High-sheen rim flange; modification of bodywork necessary



**18** STYLE III

AMG 5-spoke wheel

7.5 J x 18 ET 37 · 225/40 R18

B6 603 1181

Sterling silver finish; modification of bodywork necessary



**18** STYLE III

AMG 5-spoke wheel  
multi-piece

7.5 J x 18 ET 37 · 225/40 R18

B6 603 1045

High-sheen rim flange; modification of bodywork necessary



**17** STYLE III

AMG 5-spoke wheel  
multi-piece

7.5 J x 17 ET 37 · 225/45 R17

B6 603 1030

High-sheen rim flange; modification of bodywork necessary



**18** STYLE III

AMG 5-spoke wheel

7.5 J x 18 ET 37 · 225/40 R18

B6 603 1447

Titanium silver finish; modification of bodywork necessary

**17**  
8.5 J x 17 ET 30 · RA 245/40 R17  
B6 603 1006

High-sheen rim flange

**18**  
9 J x 18 ET 35 · RA 255/35 R18  
B6 603 1001

High-sheen rim flange; modification of bodywork necessary

**18**  
8.5 J x 18 ET 30 · RA 255/35 R18  
B6 603 1182

Sterling silver finish; modification of bodywork necessary

**18**  
8.5 J x 18 ET 34 · RA 255/35 R18  
B6 603 1046

High-sheen rim flange; modification of bodywork necessary

**17**  
8.5 J x 17 ET 34 · RA 245/40 R17  
B6 603 1031

High-sheen rim flange

**18**  
8.5 J x 18 ET 30 · RA 255/35 R18  
B6 603 1448

Titanium silver finish; modification of bodywork necessary

**17**  
7.5 J x 17 ET 35 · 225/45 R17  
B6 602 0083

High-sheen rim flange

**17**  
7.5 J x 17 ET 37 · 225/45 R17  
B6 603 1183

Sterling silver finish

**17**  
8.5 J x 17 ET 30 · RA 245/40 R17  
B6 602 0085

High-sheen rim flange

**17**  
8.5 J x 17 ET 30 · RA 245/40 R17  
B6 603 1184

Sterling silver finish

**18**  
8.5 J x 18 ET 34 · RA 255/35 R18  
B6 603 1452

Titanium silver finish; modification of bodywork necessary



**17** **STYLE III**

AMG 5-spoke wheel  
7.5 J x 17 ET 37 · 225/45 R17  
B6 603 1445  
Titanium silver finish



**17** **STYLE IV**

AMG twin-spoke wheel  
7.5 J x 17 ET 37 · 225/45 R17  
B6 603 1026  
Sterling silver finish



**18** **STYLE IV**

AMG twin-spoke wheel  
7.5 J x 18 ET 37 · 225/40 R18  
B6 603 1310  
Sterling silver finish; modification  
of bodywork necessary



**18** **STYLE IV**

AMG twin-spoke wheel  
multi-piece  
7.5 J x 18 ET 37 · 225/40 R18  
B6 603 1368  
Sterling silver finish; modification  
of bodywork necessary



**18** **STYLE V**

AMG multi-spoke wheel  
7.5 J x 18 ET 37 · 225/40 R18  
B6 603 1113  
Silver finish, high-sheen; modification  
of bodywork necessary

**17**  
8.5 J x 17 ET 30 · RA 245/40 R17  
B6 603 1446  
Titanium silver finish

**17**  
8.5 J x 17 ET 34 · RA 245/40 R17  
B6 603 1027  
Sterling silver finish

**18**  
8.5 J x 18 ET 30 · RA 255/35 R18  
B6 603 1305  
Sterling silver finish; modification  
of bodywork necessary

**17**  
8.5 J x 17 ET 30 · RA 245/40 R17  
B6 603 1303  
Sterling silver finish

**18**  
8.5 J x 18 ET 30 · RA 255/35 R18  
B6 603 1362  
Sterling silver finish; modification  
of bodywork necessary

**18**  
8.5 J x 18 ET 30 · RA 255/35 R18  
B6 603 1114  
Silver finish, high-sheen; modification  
of bodywork necessary

**17**  
8.5 J x 17 ET 34 · RA 245/40 R17  
B6 603 1451  
Titanium silver finish

**18**  
8.5 J x 18 ET 34 · RA 255/35 R18  
B6 603 1342  
Sterling silver finish; modification  
of bodywork necessary

**17**  
8.5 J x 17 ET 34 · RA 245/40 R17  
B6 603 1340  
Sterling silver finish

For technical reasons and as a result of differences in local legislation, not every wheel model will be suitable for your particular vehicle. Ask your Mercedes-Benz dealer for the latest information on the wheel of your choice (see also page 4).





**incenio** designer wheel

**17 SAIDAK**

5-twin-spoke wheel  
multi-piece

7.5 J x 17 ET 37 · 225/45 R17

B6 647 1671

Sterling silver finish; without sporty suspension tuning, Code 488, some modification may be required

**17**

8.5 J x 17 ET 30 · RA 245/40 R17

B6 647 1672

Sterling silver finish; not compatible with snow chains; without sporty suspension tuning, Code 488, some modification may be required



**incenio** designer wheel

**17 ALHENA**

5-hole wheel

7.5 J x 17 ET 37 · 225/45 R17

B6 647 4020

High-sheen finish; without sporty suspension tuning, Code 488, some modification may be required



**incenio** designer wheel

**16 NUSHABA**

5-spoke wheel

7 J x 16 ET 37 · 205/55 R16

B6 647 0511

Standard silver finish;  
not for CLK 430 from 07/99

**16**

8 J x 16 ET 36 · RA 225/50 R16

B6 647 0512

Standard silver finish; not compatible  
with snow chains



**incenio** designer wheel

**16 SARGAS**

5-twin-spoke wheel

7 J x 16 ET 37 · 205/55 R16

B6 647 1542

Sterling silver finish; only with rim weights (3 mm); not for CLK 430 from 07/99



**incenio** designer wheel

**17 ALSHAIN**

7-spoke wheel

7.5 J x 17 ET 37 · 225/45 R17

B6 647 1511

Sterling silver finish; without sporty suspension tuning, Code 488, some modification may be required





**incenio** designer wheel

**17** **CEGINUS**

EVO II wheel

7.5 J x 17 ET 37 · 225/45 R17

B6 647 0518

High-shine finish; without sporty suspension tuning, Code 488, some modification may be required; not for CLK 430



**incenio** designer wheel

**16** **ALGIEBA**

5-hole wheel

7 J x 16 ET 37 · 205/55 R16<sup>■</sup>

B6 647 0987

High-shine finish; <sup>■</sup> also 225/50 R16; not for CLK 430 from 07/99



**incenio** designer wheel

**17** **TUREIS**

5-spoke wheel

7.5 J x 17 ET 37 · 225/45 R17

B6 647 0513

Standard silver finish; without sporty suspension tuning, Code 488, some modification may be required; not for CLK 430 from 07/99



**incenio** designer wheel

**17** **CELAENO**

7-twin-spoke wheel

7.5 J x 17 ET 37 · 225/45 R17

B6 647 1821

Sterling silver finish; without sporty suspension tuning, Code 488, some modification may be required

**17**

8.5 J x 17 ET 30 · RA 245/40 R17

B6 647 1822

Sterling silver finish; not compatible with snow chains; without sporty suspension tuning, Code 488, some modification may be required



**17** MEKAB

5-hole wheel

7.5 J x 17 ET 37 · 225/45 R17

B6 647 0862

High-sheen rim flange; without sporty suspension tuning, Code 488, some modification may be required



**17** MIRZAM

7-spoke wheel

7.5 J x 17 ET 37 · 225/45 R17

B6 647 1332

Standard silver finish; without sporty suspension tuning, Code 488, some modification may be required



**16** MERAK

5-hole wheel

7 J x 16 ET 37 · 205/55 R16

B6 647 0522

High-sheen rim flange; not for CLK 430 from 07/99



**16** CORVUS

6-spoke wheel

7 J x 16 ET 37 · 205/55 R16

B6 647 0523

Standard silver finish; not for CLK 430 from 07/99



**16** ADHARAZ

5-spoke wheel

7 J x 16 ET 37 · 205/55 R16

B6 647 1392

Standard silver finish; not for CLK 430 from 07/99



**16** LUCIDA

6-hole wheel

7 J x 16 ET 37 · 205/55 R16

B6 647 1481

High-sheen finish; not for CLK 430 from 07/99

**17**

8.5 J x 17 ET 30 · RA 245/40 R17

B6 647 1333

Standard silver finish; without sporty suspension tuning, Code 488, some modification may be required

**16**

7 J x 16 ET 37 · 205/55 R16

B6 647 1331

Standard silver finish; not for CLK 430 from 07/99

**16**

8 J x 16 ET 36 · RA 225/50 R16

B6 647 0526

Standard silver finish; not compatible with snow chains

For technical reasons and as a result of differences in local legislation, not every wheel model will be suitable for your particular vehicle. Ask your Mercedes-Benz dealer for the latest information on the wheel of your choice (see also page 4).

**LIGHT-ALLOY WHEELS  
STANDARD AND OPTIONAL EQUIPMENT**



**16 ELECTRA**

5-twin-spoke wheel

7 J x 16 ET 37 · 205/55 R16

B6 647 2120

Standard silver finish; not for CLK 430 from 07/99

For technical reasons and as a result of differences in local legislation, not every wheel model will be suitable for your particular vehicle. Ask your Mercedes-Benz dealer for the latest information on the wheel of your choice (see also page 4).

**AMG  
LIGHT-ALLOY WHEELS**



**17 STYLE I**

AMG 5-spoke wheel

7.5 J x 17 ET 37 · 225/45 R17

B6 603 1005

High-sheen rim flange

**17**

8.5 J x 17 ET 30 · RA 245/40 R17

B6 603 1006

High-sheen rim flange



**18 STYLE II**

AMG disc wheel

8 J x 18 ET 31 · FA 225/40 R18

B6 603 1007

High-sheen rim flange; modification of bodywork necessary

**18**

9 J x 18 ET 35 · RA 255/35 R18

B6 603 1001

High-sheen rim flange; modification of bodywork necessary

**17**

7.5 J x 17 ET 35 · 225/45 R17

B6 602 0083

High-sheen rim flange

**17**

8.5 J x 17 ET 30 · RA 245/40 R17

B6 602 0085

High-sheen rim flange



**18 STYLE III**

AMG 5-spoke wheel

7.5 J x 18 ET 37 · 225/40 R18

B6 603 1181

Sterling silver finish; modification of bodywork necessary

**18**

8.5 J x 18 ET 30 · RA 255/35 R18

B6 603 1182

Sterling silver finish; modification of bodywork necessary

**17**

7.5 J x 17 ET 37 · 225/45 R17

B6 603 1183\*

Sterling silver finish

\*High-sheen rim flange B6 603 1028

**17**

8.5 J x 17 ET 30 · RA 245/40 R17

B6 603 1184\*

Sterling silver finish

\*High-sheen rim flange B6 603 1029



**18 STYLE III**

AMG 5-spoke wheel multi-piece

7.5 J x 18 ET 37 · 225/40 R18

B6 603 1045

High-sheen rim flange; modification of bodywork necessary

**18**

8.5 J x 18 ET 34 · RA 255/35 R18

B6 603 1046

High-sheen rim flange; modification of bodywork necessary



**17** **STYLE III**

AMG 5-spoke wheel  
multi-piece  
7.5 J x 17 ET 37 · 225/45 R17  
B6 603 1030  
High-sheen rim flange



**18** **STYLE III**

AMG 5-spoke wheel  
7.5 J x 18 ET 37 · 225/40 R18  
B6 603 1447  
Titanium silver finish; modification  
of bodywork necessary



**17** **STYLE IV**

AMG twin-spoke wheel  
7.5 J x 17 ET 37 · 225/45 R17  
B6 603 1026  
Sterling silver finish



**18** **STYLE IV**

AMG twin-spoke wheel  
7.5 J x 18 ET 37 · 225/40 R18  
B6 603 1310  
Sterling silver finish; modification  
of bodywork necessary



**18** **STYLE IV**

AMG twin-spoke wheel  
multi-piece  
7.5 J x 18 ET 37 · 225/40 R18  
B6 603 1368  
Sterling silver finish; modification  
of bodywork necessary



**18** **STYLE V**

AMG multi-spoke wheel  
7.5 J x 18 ET 37 · 225/40 R18  
B6 603 1113  
Silver finish, high-sheen; modification  
of bodywork necessary

**17**  
8.5 J x 17 ET 34 · RA 245/40 R17  
B6 603 1031

High-sheen rim flange

**18**  
8.5 J x 18 ET 30 · RA 255/35 R18  
B6 603 1448

Titanium silver finish; modification  
of bodywork necessary

**17**  
8.5 J x 17 ET 34 · RA 245/40 R17  
B6 603 1027

Sterling silver finish

**18**  
8.5 J x 18 ET 30 · RA 255/35 R18  
B6 603 1305

Sterling silver finish; modification  
of bodywork necessary

**18**  
8.5 J x 18 ET 30 · RA 255/35 R18  
B6 603 1362

Sterling silver finish; modification  
of bodywork necessary

**18**  
8.5 J x 18 ET 30 · RA 255/35 R18  
B6 603 1114

Silver finish, high-sheen; modification  
of bodywork necessary

**17**  
7.5 J x 17 ET 37 · 225/45 R17  
B6 603 1445

Titanium silver finish

**17**  
7.5 J x 17 ET 37 · 225/45 R17  
B6 603 1302

Sterling silver finish

**17**  
8.5 J x 17 ET 30 · RA 245/40 R17  
B6 603 1446

Titanium silver finish

**17**  
8.5 J x 17 ET 30 · RA 245/40 R17  
B6 603 1303

Sterling silver finish

**incenio**  
DESIGNER WHEELS FROM MERCEDES-BENZ



**incenio** designer wheel**17** | **CEGINUS**

EVO II wheel

8.25 J x 17 ET 34 · 245/45 R17

B6 647 0061

Standard silver finish; for models up to 06/98: FA 235/45; with 245/45 R17 modifications may be necessary

**17** |

8.25 J x 17 ET 34 · 245/45 R17

B6 647 0084

High-shine finish; not compatible with snow chains

**incenio** designer wheel**18** | **ALBIREO**6-hole wheel  
multi-piece

8.5 J x 18 ET 25 · 245/40 R18

B6 647 1452

Sterling silver finish; modification  
of bodywork necessary**18** |

9.5 J x 18 ET 23 · RA 275/35 R18

B6 647 1453

Sterling silver finish; modification  
of bodywork necessary; not compatible  
with snow chains**18** |

8.5 J x 18 ET 25 · 245/40 R18

B6 647 1761

Sterling silver finish; with stainless  
steel scuff guard; modification of  
bodywork necessary**18** |

9.5 J x 18 ET 23 · RA 275/35 R18

B6 647 1762

Sterling silver finish; with stainless  
steel scuff guard; modification of  
bodywork necessary; not compatible  
with snow chains

Wheel bolts: B6 647 0133 | Rim lock: B6 647 0143



LIGHT-ALLOY WHEELS  
STANDARD AND OPTIONAL EQUIPMENT

AMG  
LIGHT-ALLOY WHEELS



**17 ALBALI**

5-hole wheel

8.25 J x 17 ET 34 · 245/45 R17

B6 647 0541

High-shine rim flange; for models up to 06/98: FA 235/45; with 245/45 R17 modifications may be necessary



**17 SADOR**

5-spoke wheel

8.25 J x 17 ET 34 · 245/45 R17

B6 647 0542

High-shine finish; for models up to 06/98: FA 235/45; with 245/45 R17 modifications may be necessary



**16 MONKAR**

12-hole wheel

8 J x 16 ET 34 · 225/55 R16

B6 647 0095

High-shine rim flange; not for SL 600; vehicles without ESP only



**16 ALAMAK**

8-hole wheel

8 J x 16 ET 34 · 225/55 R16

B6 647 0016\*

Standard silver finish; not for S 600; vehicles without ESP only

\*Variation with high-shine finish  
B6 647 0507

For technical reasons and as a result of differences in local legislation, not every wheel model will be suitable for your particular vehicle. Ask your Mercedes-Benz dealer for the latest information on the wheel of your choice (see also page 4).



**18** STYLE I

AMG 5-spoke wheel  
8.5 J x 18 ET 25 · 245/40 R18  
B6 603 1043\*

Sterling silver finish; modification of  
bodywork necessary

\*High-sheen rim flange B6 603 1008

**18** STYLE I

AMG 5-spoke wheel  
multi-piece  
8.5 J x 18 ET 25 · 245/40 R18  
B6 603 1003

High-sheen rim flange; models up to  
06/98 only; modification of bodywork  
necessary

**18** STYLE II

AMG disc wheel  
8 J x 18 ET 31 · 245/40 R18  
B6 603 1007

High-sheen rim flange; for models  
up to 06/98 only

**18**

9.5 J x 18 ET 23 · RA 275/35 R18  
B6 603 1044\*

Sterling silver finish; modification of  
bodywork necessary

\*High-sheen rim flange B6 603 1009

**18**

8.5 J x 18 ET 25 · RA 245/40 R18  
B6 603 1010

High-sheen rim flange; modification  
of bodywork necessary

**18**

9 J x 18 ET 35 · RA 275/35 R18  
B6 603 1001

High-sheen rim flange; for models  
up to 06/98 only

**18**

10 J x 18 ET 25 · RA 275/35 R18  
B6 603 1004

High-sheen rim flange; modification  
of bodywork necessary



**incenio** designer wheel

**i8** | **ALIOTH**

5-spoke wheel  
multi-piece

8.5 J x 18 ET 44 · 245/45 R18

B6 647 4100

Sterling silver finish;  
high-sheen rim flange

**i8** |

9.5 J x 18 ET 46-RA 275/40 R18 MO

B6 647 4101

Sterling silver finish; high-sheen rim  
flange; models up to 08/02 only

**incenio** designer wheel**i8** ALBIREO

6-hole wheel, multi-piece

8 J x 18 ET 44 · 245/45 R18

B6 647 1451

Sterling silver finish; high-shen rim  
flange; not for CL 600 Biturbo**incenio** designer wheel**i8** ALMAAZ

15-spoke wheel

8.5 J x 18 ET 44 · 245/45 R18

B6 647 4241

Sterling silver finish

**incenio** designer wheel**i8** ERIDANUS

5-twin-spoke wheel

8.5 J x 18 ET 44 · 245/45 R18

B6 647 2122

Sterling silver finish





**18** DIFDA

5-hole wheel

8 J x 18 ET 44 · FA 245/45 R18

B6 647 1842

Sterling silver finish; hollow-spoke



**18** SEGIN

6-hole wheel

8 J x 18 ET 44 · 245/45 R18

B6 647 1483

High-sheen polished; forged



**17** MISMAR

5-twin-spoke wheel

7.5 J x 17 ET 46 · 225/55 R17

B6 647 1881

Standard silver finish; not for  
CL 600 Biturbo



**17** YAD

5-twin-spoke wheel

7.5 J x 17 ET 46 · 225/55 R17

B6 647 0545

Standard silver finish; not for  
CL 600 Biturbo; not for V6/V8  
4MATIC

**18**

9 J x 18 ET 46 · RA 265/40 R18

B6 647 1841

Sterling silver finish; hollow-spoke;  
not in conjunction with 4MATIC

**18**

9 J x 18 ET 46 · RA 265/40 R18

B6 647 1484

High-sheen polished; forged;  
not for 4MATIC

**18**

8 J x 18 ET 44 · 245/45 R18

B6 647 0547

Sterling silver finish; hollow-spoke;  
not for CL 600 Biturbo; for models  
up to 08/02

**17**

7.5 J x 17 ET 46 · 225/55 R17

B6 647 0546

High-sheen polished; forged; not for  
CL 600 Biturbo

For technical reasons and as a result of differences in local legislation, not every wheel model will be suitable for your particular vehicle. Ask your Mercedes-Benz dealer for the latest information on the wheel of your choice (see also page 4).



**18** STYLE I

AMG 5-spoke wheel

8.5 J x 18 ET 44 · 245/45 R18

B6 603 1037\*

Sterling silver finish; not for  
CL 55 AMG Kompressor, CL 600 Biturbo  
or CL 65 AMG

\*High-sheen rim flange B6 603 1012

**18** STYLE III

AMG 5-spoke wheel

8.5 J x 18 ET 44 · 245/45 R18

B6 603 1240

Sterling silver finish; not for CL 65 AMG

**19** STYLE III

AMG 5-spoke wheel

8 J x 19 ET 50 · 245/40 R19

B6 603 1228

Sterling silver finish; may only  
be used as a spare wheel/winter  
wheel for CL 65 AMG**19** STYLE IIIAMG 5-spoke wheel  
multi-piece

8.5 J x 19 ET 44 · 245/40 R19

B6 603 1024

High-sheen rim flange; not for  
CL 65 AMG; not as FA/RA  
combination for CL 55 AMG or  
CL 600 Biturbo**18** STYLE IV

AMG twin-spoke wheel

8.5 J x 18 ET 44 · 245/45 R18

B6 603 1306

Sterling silver finish; not for CL 65 AMG

**19** STYLE IVAMG twin-spoke wheel  
multi-piece

8.5 J x 19 ET 44 · 245/40 R19

B6 603 1375\*

Sterling silver finish; not as FA/RA  
combination for CL 55 AMG Kompressor,  
CL 600 Biturbo or CL 65 AMG\*Variation with titanium grey finish  
B6 603 1364**18**

9.5 J x 18 ET 46 · RA 275/40 R18

B6 603 1038\*

Sterling silver finish; not for  
CL 55 AMG Kompressor, CL 600 Biturbo  
or CL 65 AMG

\*High-sheen rim flange B6 603 1013

**18**

9 J x 18 ET 44 · RA 265/40 R18

B6 603 1241

Sterling silver finish; not for CL 65 AMG

**19**

8.5 J x 19 ET 44 · 245/40 R19

B6 603 1224\*

Sterling silver finish; not for  
CL 65 AMG; not as FA/RA  
combination for CL 55 AMG  
Kompressor or CL 600 Biturbo

\*High-sheen rim flange B6 603 1022

**19**

9.5 J x 19 ET 46 · RA 275/35 R19

B6 603 1025

High-sheen rim flange;  
not for CL 65 AMG**18**

9 J x 18 ET 44 · RA 265/40 R18

B6 603 1307

Sterling silver finish; not for CL 65 AMG

**19**

9.5 J x 19 ET 46 · RA 275/35 R19

B6 603 1376\*

Sterling silver finish; not for  
CL 65 AMG\*Variation with titanium grey finish  
B6 603 1365**19**

9.5 J x 19 ET 46 · RA 275/35 R19

B6 603 1225\*

Sterling silver finish; not for CL 65 AMG

\*High-sheen rim flange B6 603 1023

**incenio**  
DESIGNER WHEELS FROM MERCEDES-BENZ



# M-Class

SERIES 163  
MODELS UP TO 07/2005



## incenio designer wheel

**18** NIBAL

6-spoke wheel  
multi-piece

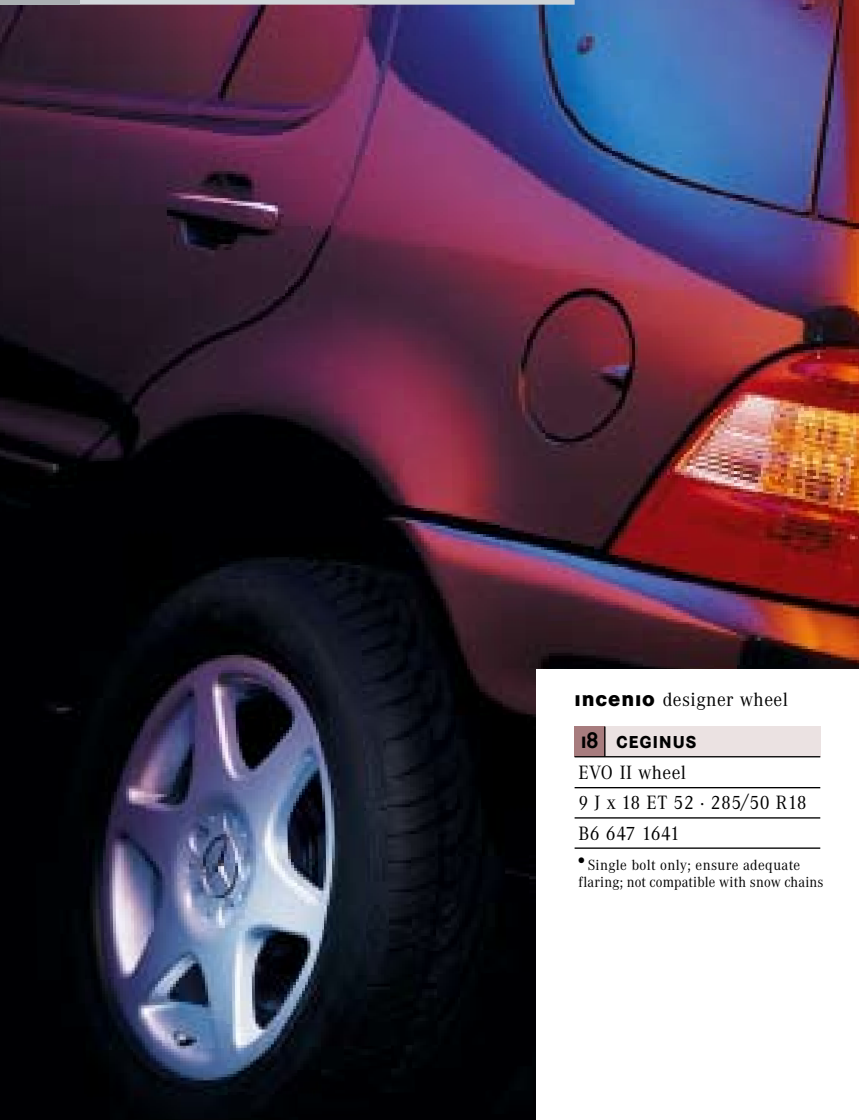
9 J x 18 ET 52 · 285/50 R18

B6 647 1421

Sterling silver finish; • single bolt only; ensure adequate flaring; not compatible with snow chains



**incenio**  
DESIGNER WHEELS FROM MERCEDES-BENZ



**incenio** designer wheel

**i8** **CEGINUS**

EVO II wheel

9 J x 18 ET 52 · 285/50 R18

B6 647 1641

• Single bolt only; ensure adequate flaring; not compatible with snow chains

LIGHT-ALLOY WHEELS  
STANDARD AND OPTIONAL EQUIPMENT



**i7** **PICTOR**

7-hole wheel

8.5 J x 17 ET 52 · 275/55 R17

B6 647 1092

High-sheen silver finish; • single bolt only; ensure adequate flaring



**i7** **MENKALINA**

6-hole wheel

8.5 J x 17 ET 52 · 275/55 R17

B6 647 2127

Sterling silver finish; • single bolt only; ensure adequate flaring



**i7** **THUBAN**

5-hole wheel

8 J x 17 ET 52 · 255/60 R17

B6 647 4120

High-sheen silver finish; • single bolt only



**17 TEGMEN**

5-hole wheel

8.5 J x 17 ET 52 · 275/55 R17

B6 647 0882

High-sheen silver finish; \* single bolt only; ensure adequate flaring



**17 5-SPOKE WHEEL**

8.5 J x 17 ET 52 · 275/55 R17

B6 647 4248

Titanium silver finish;  
\*single bolt only



**16 ACAMAR**

5-spoke wheel

8 J x 16 ET 62 · 255/65 R16

B6 647 0516

High-sheen silver finish; \* single bolt only; not for models from 09/01

**16**

6.5 J x 16 ET 47 · 225/75 R16

B6 647 0528

High-sheen silver finish; \* single bolt only; not for models from 09/01



**18 STYLE I**

AMG 5-spoke wheel

9 J x 18 ET 52 · 285/50 R18

B6 603 1020

Sterling silver finish;  
\* single bolt only



**19 STYLE I**

AMG 5-spoke wheel  
multi-piece

9.5 J x 19 ET 46 · 295/45 R19

B6 603 1021

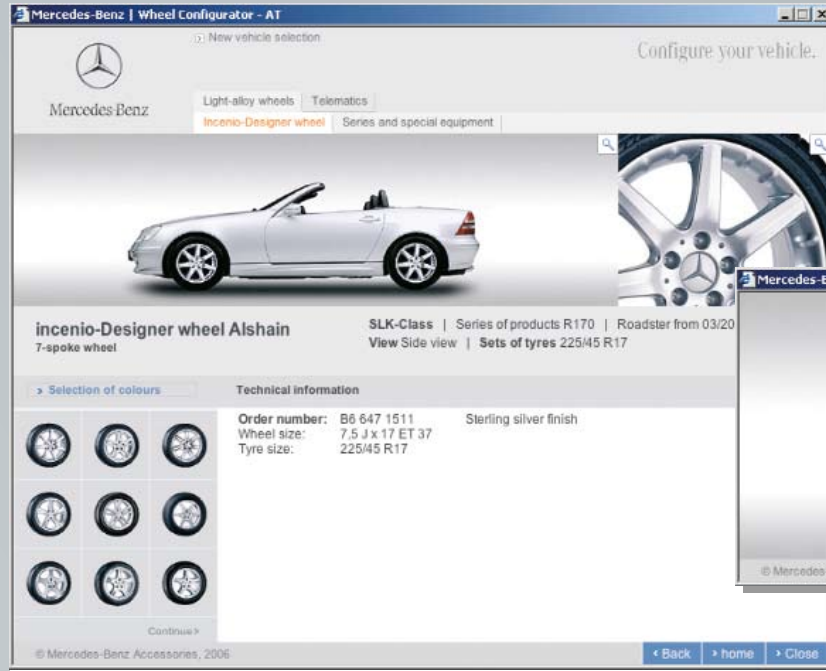
High-sheen rim flange;  
\* single bolt only

For technical reasons and as a result of differences in local legislation, not every wheel model will be suitable for your particular vehicle. Ask your Mercedes-Benz dealer for the latest information on the wheel of your choice (see also page 4).

# Dream combinations at the click of a mouse

The Mercedes-Benz Wheel Configurator features Mercedes-Benz's entire range of **incenio** designer wheels and light-alloy wheels. From the comfort of your PC, select your Mercedes-Benz model in the appropriate paintwork colour and see how it looks with your choice of wheels – all at the click of a mouse.

Visit us at [www.mb-configurator.net](http://www.mb-configurator.net)



## A dazzling range of looks

Depending on the style, once the top-quality aluminium wheel has been cast, it is given a high-sheen, ball-burnished finish and a multi-coat paint application. The coating not only provides a shiny look, but also optimum protection against corrosion, ensuring long product life.

So, as you see, there's silver and there's silver. And the most beautiful shades have a star attached.



Sterling silver

High-sheen

High-sheen rim flange

*At the centre of it all: the hub caps.  
Four versions are available*

- 1 | Classic Roadster design in blue; B6 647 0120
- 2 | Classic Roadster design in black; B6 647 0201
- 3 | Sterling silver with chrome star; B6 647 0206
- 4 | Titanium silver with chrome star; B6 647 0203



*Added value: wheel bolts, rim locks  
and valve caps - ask your Mercedes-Benz  
dealer for practical accessories.*

*Light-alloy wheels are supplied without tyres,  
wheel bolts or hub caps.*