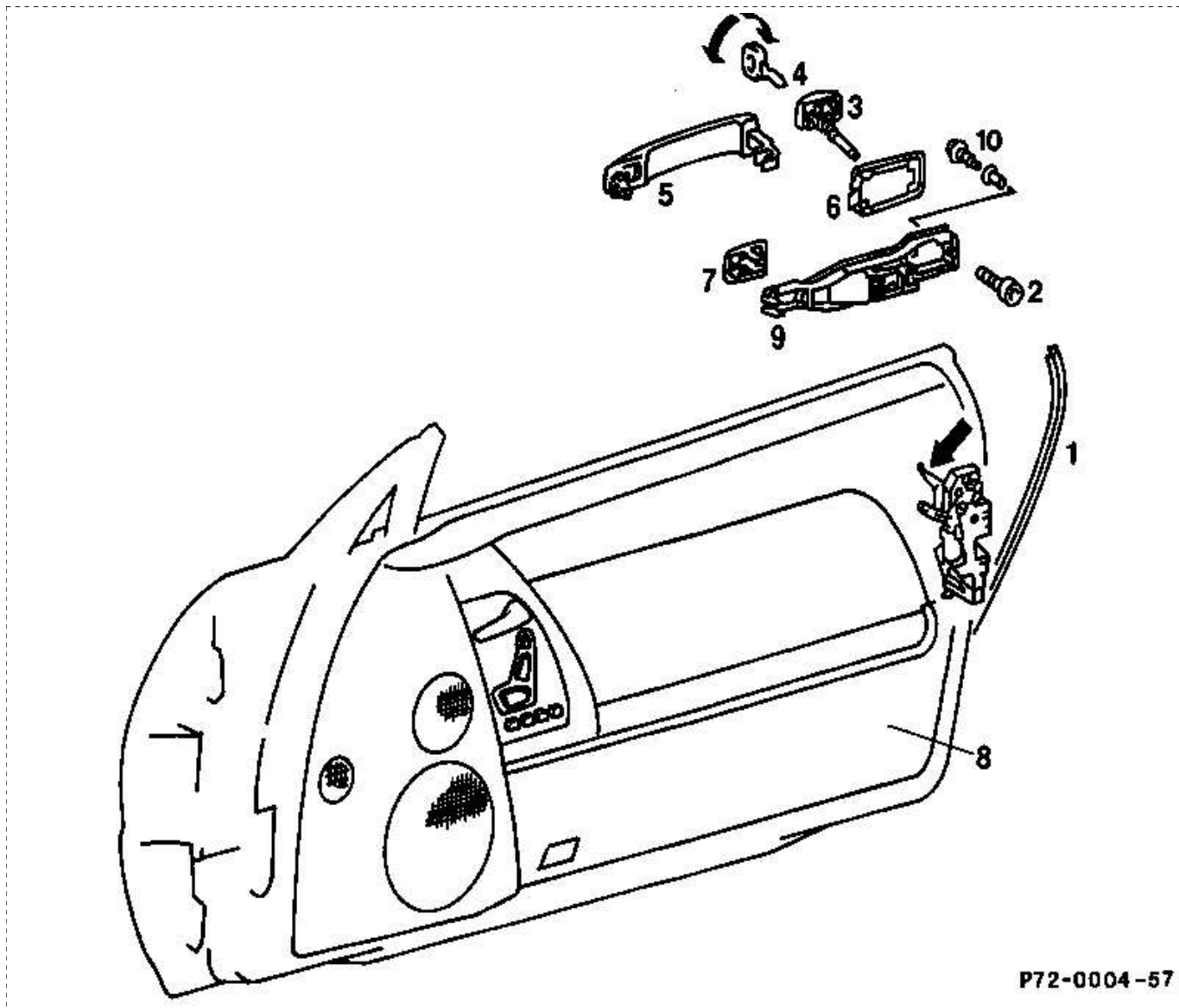


Operation number of the operation texts and work units or standard texts and flat rates respectively.....



P72-0004-57

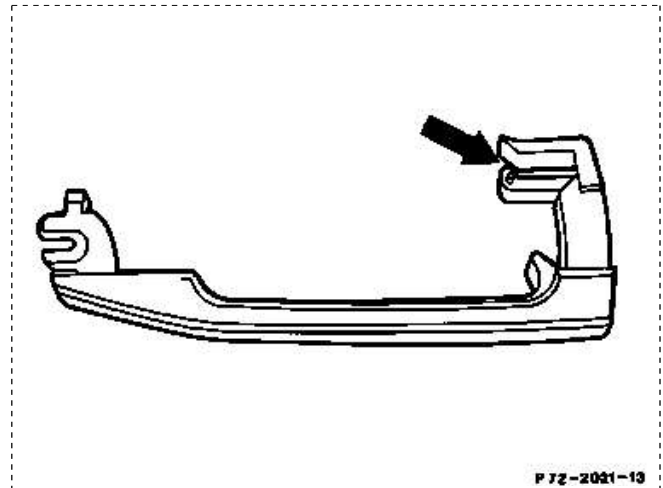
- | | |
|--|---|
| Door sealing frame (1)..... | pull off in area of door handle. |
| Screw (2) for locking cylinder housing (1 each)..... | screw out (Allan screw, 4 mm). |
| Lock cylinder (3)..... | turn 90° with door key (4) and remove lock cylinder housing. Observe installation note. |
| Screw (2)..... | remove. |
| Door handle (5)..... | push toward rear and remove with rubber frame (6). |

- | | |
|-----------------------------|---------|
| Front rubber frame (7)..... | remove. |
|-----------------------------|---------|

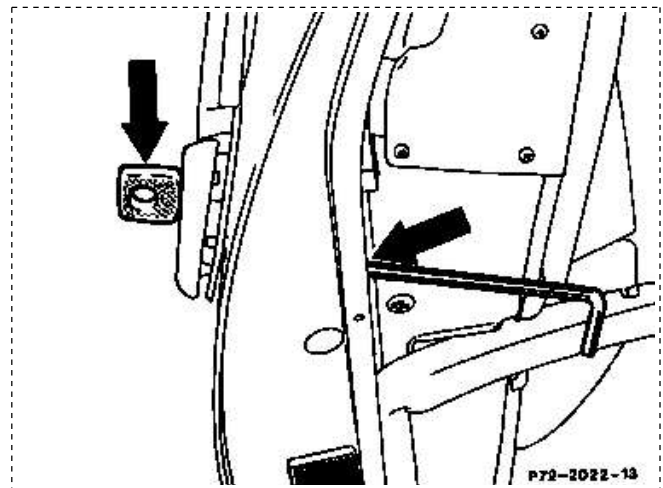
Door liner.....	remove (72-100), when bearing strap (9) is to be removed also.
Screws (10) on bearing strap (9) (3 each).....	screw out.
Bearing strap (9).....	remove through installation opening in inside door panel, for this purpose pull off door foil in upper area.
Install.....	in reverse order. Observe installation note.

Installation note

When installing insert door handle unit so that handle makes contact behind actuating lever on door lock (arrow).



Insert lock cylinder into turning nut on door catch with turning rod; for this purpose turn lock cylinder 90° and fasten (arrows).



After tightening door handle check the small clearance between door handle and actuating lever for door catch, adjust if required. Adjust this small clearance to 0 - 1 mm by turning eccentric plastic screw.

