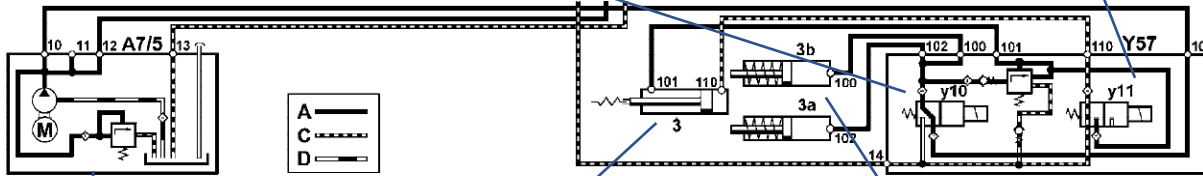


- lowering the roll bar
- Y10 is roll bar lower valve, supplies pressure to rod side of piston(101), also supplies pressure to latching pawls to retract them and enable lowering the roll bar

- Y11 is the roll bar raise valve, supplies pressure to the piston side (port 110), shown in release fluid position, roll bar lower



- Pump
- A hydraulic pressure
- C return flow
- D suction

- Roll bar hydraulic cylinder (3), moves roll bar up and down with switch, shown in roll bar lowered position, one hydraulic cylinder only, on passenger side
- Hydraulic cylinder disconnects from spring loaded roll bar support arms during crash deployment of roll bar, spring loaded support arms snap the roll bar in the up position when hydraulic cylinder is released, latching pawls prevent the roll bar from compressing the springs and lowering the roll bar

- 3a and 3b are latching pawls to lock roll bar in up position during a crash deployment.
- During roll bar lowering using the RB switch the latching pawls are retracted when hydraulic pressure is applied, this enables lowering the roll bar and compressing the crash deployment spring