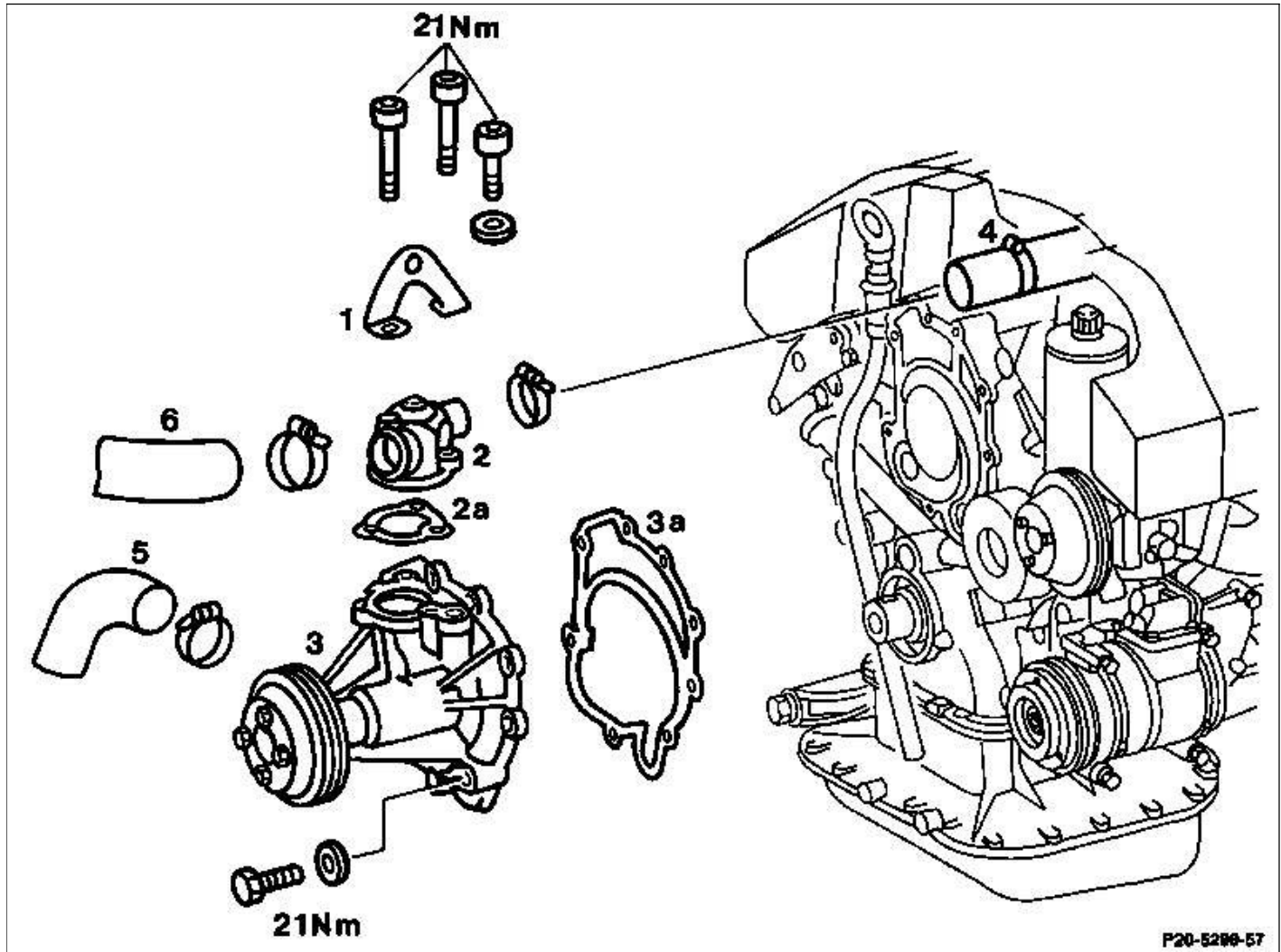


## 20-2100 Removing and installing coolant pump

Preceding work:

Carrier of viscous fan clutch removed (20-3140)  
Belt pulley/vibration damper removed (03-3420).

Operation no. of operation texts and work units or standard texts  
and flat rates  
20-1270



P20-5299-57

P20-5299-57

Coolant hoses (4), (5) and (6).....	detach, attach.
Connection cover at top (2) with engine lifting eye (1).....	unbolt, bolt on (21 Nm).
Gasket (2a).....	replace.
Model 210 with secondary air injection: retaining plate with switchover valve for secondary air injection.....	unbolt at coolant pump (3), bolt on.
Coolant pump (3).....	unbolt.



Coolant pump housing, see Note.

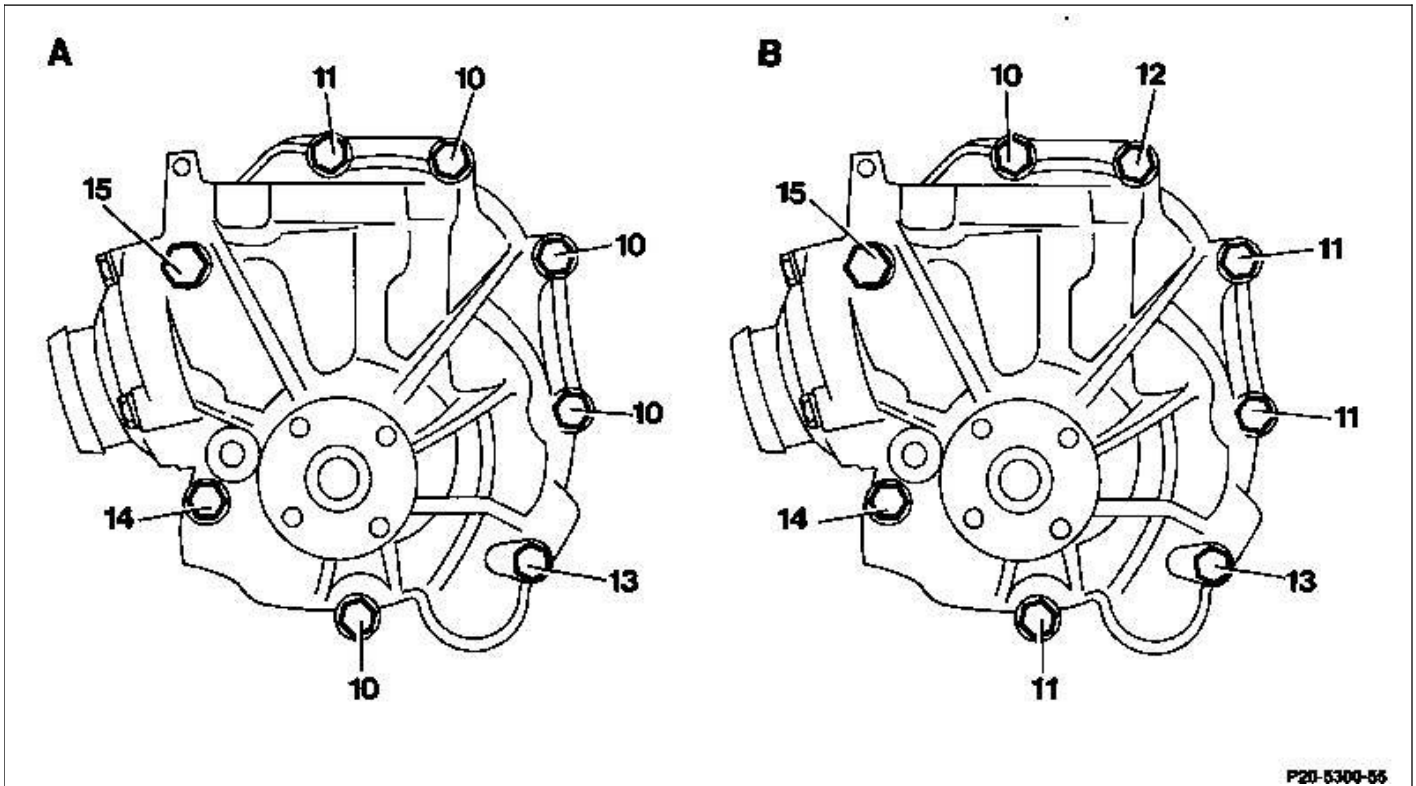
Sealing surfaces.....	clean.
Gasket (3a).....	replace.

Coolant pump (3)..... fit on, bolt on (21 Nm).



Pay attention to different bolt lengths, see bolt diagram.

Cooling system..... check for leaks (20-0170).



P20-5300-55

P20-5300-55

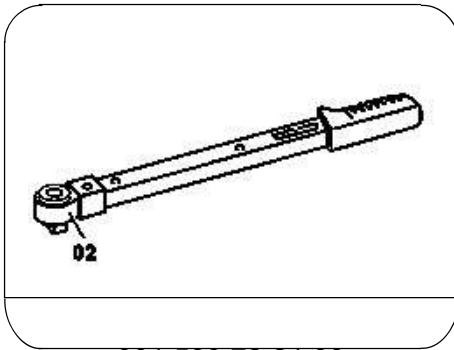
**A Engine 119.96**

- 10 M8x60 bolt+washer
- 11 M8x65 bolt+washer
- 13 M8x85 bolt+washer
- 14 M8x90 bolt+washer  
(together with fan clutch carrier)
- 15 M8x135 bolt+washer

**B Engine 119.97/98**

- 10 M8x60 bolt+washer
- 11 M8x65 bolt+washer
- 12 M8x75 bolt+washer
- 13 M8x85 bolt+washer
- 14 M8x90 bolt+washer  
(together with fan clutch carrier)
- 15 M8x135 bolt+washer

## Special tool



001 589 72 21 00

## Tightening torque in Nm

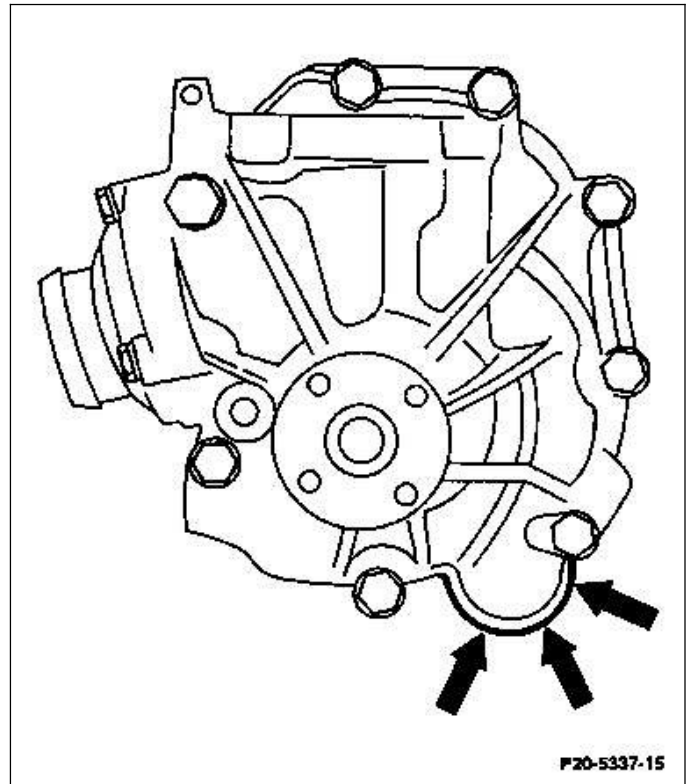
Bolts of cover at top to coolant pump	21
Bolts of coolant pump to crankcase	21

### Note

Engine 119.97

The coolant pump must not touch the timing case cover at the bottom (arrows) otherwise the attaching hose and the gasket may not be aligned and the top attaching eye may shear off.

Check position of coolant pump and grind off coolant pump housing, if necessary, in the area of the arrows by about 1 mm.



P20-5337-15