

AP47.20-P-0780DC	Replace fuel filter	22.11.05
------------------	---------------------	----------

**ENGINE 113, 275 in MODEL 230**

*Shown on model 210 with engine 112*

52 Fuel pressure hose to engine

53 Fuel suction hose

55 Fuel filter

55/1 Degassing line

59 Banjo bolt

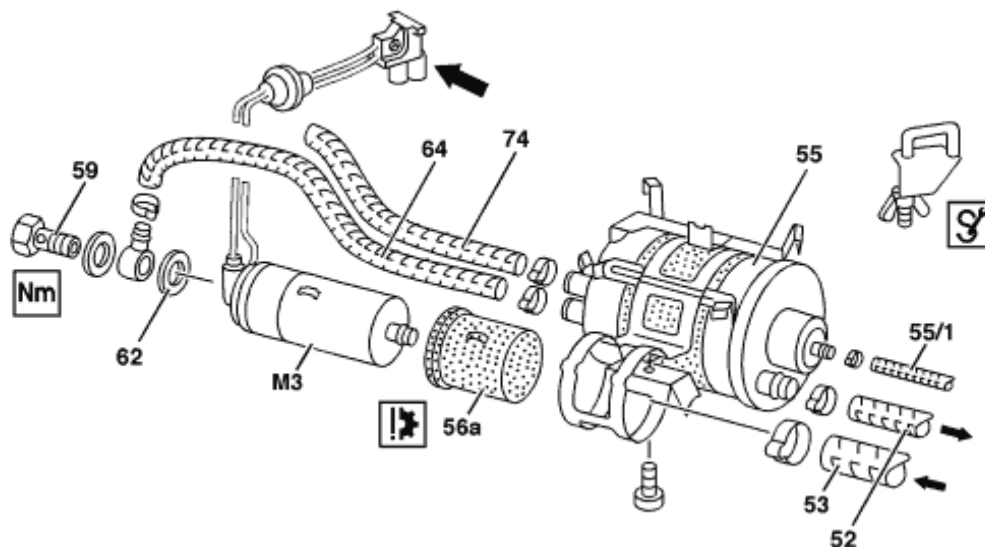
62 Copper sealing ring

64 Fuel pressure hose

74 Fuel return line




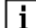



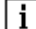
56 A Plastic sleeve

M3 Fuel pump



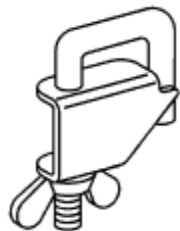
P47.20-0253-05

	Remove/install		
	<b>Risk of death</b> caused by vehicle slipping or toppling off of the lifting platform.	Align vehicle between the columns of the lifting platform and position the four support plates at the lifting platform support points specified by the vehicle manufacturer.	<a href="#">AS00.00-Z-0010-01A</a>
	<b>Risk of explosion</b> caused by fuel igniting, <b>risk of poisoning</b> caused by inhaling and swallowing fuel as well as <b>risk of injury</b> to eyes and skin caused by contact with fuel.	No fire, sparks, open flames or smoking. Pour fuels only into suitable and appropriately marked containers. Wear protective clothing when handling fuel.	<a href="#">AS47.00-Z-0001-01A</a>
1	Release pressure relief in fuel tank	To do so, open the tank cap and reseal.	
2	Raise vehicle using a lifting platform		
3	Pinch off fuel suction hose (53) and fuel pressure hose to engine (52)	<b>Installation:</b> Check the fuel	

		suction hose (53) and fuel pressure hose to the engine (52) for damage and replace if necessary to prevent leaks.	
		 Clamping device	<a href="#">000 589 40 37 00</a>
		 Clamping pliers	<a href="#">WH58.30-Z-1045-02A</a>
5	Detach hose lines from fuel filter	 Detach the fuel pressure hose to the engine (52), fuel pressure hose (64), fuel return line (74), fuel suction hose (53) and degassing line (55/1) from the fuel filter (55).	
		 <b>Installation:</b> Check the hose clamps for damage and replace if necessary. Only use the hose clamps listed in the parts catalog.	
		 Banjo bolt, fuel line to fuel pump or fuel filter	<a href="#">BA47.20-P-1001-01B</a>
6	Remove fuel filter (55)	 <b>Installation:</b> Insert the new fuel filter (55) with plastic film. Do not damage the plastic film when inserting the fuel filter (55) into the retaining clamp, otherwise contact corrosion could occur. Center the plastic film on the fuel filter (55) in the retaining clamp if possible.	
7	Install in the reverse order		
 <b>Danger!</b>	<b>Risk of accident</b> caused by vehicle starting off by itself when engine is running. <b>Risk of injury</b> caused by contusions and burns during starting procedure or when working near the running engine	Secure vehicle to prevent it from moving by itself. Wear closed and snug-fitting work clothes. Do not grasp hot or rotating parts.	<a href="#">AS00.00-Z-0005-01A</a>
8	Start engine and check fuel system for leaks	 Carry out visual inspection.	

 **Fuel pump**

Number	Designation		Engine 113	Engine 275
BA47.20-P-1001-01B	Banjo bolt of fuel line to fuel pump or fuel filter	Nm	25	25



000 589 40 37 00

Clamping device

**Commercially available tools** (see Workshop Equipment Manual)

<b>Number</b>	<b>Designation</b>	<b>Make (e.g.)</b>	<b>Order number</b>
WH58.30-Z-1045-02A	Clamping pliers	Hazet Güldenwerther Bahnhofstrasse 25-28 D-42857 Remscheid, Germany	798-2