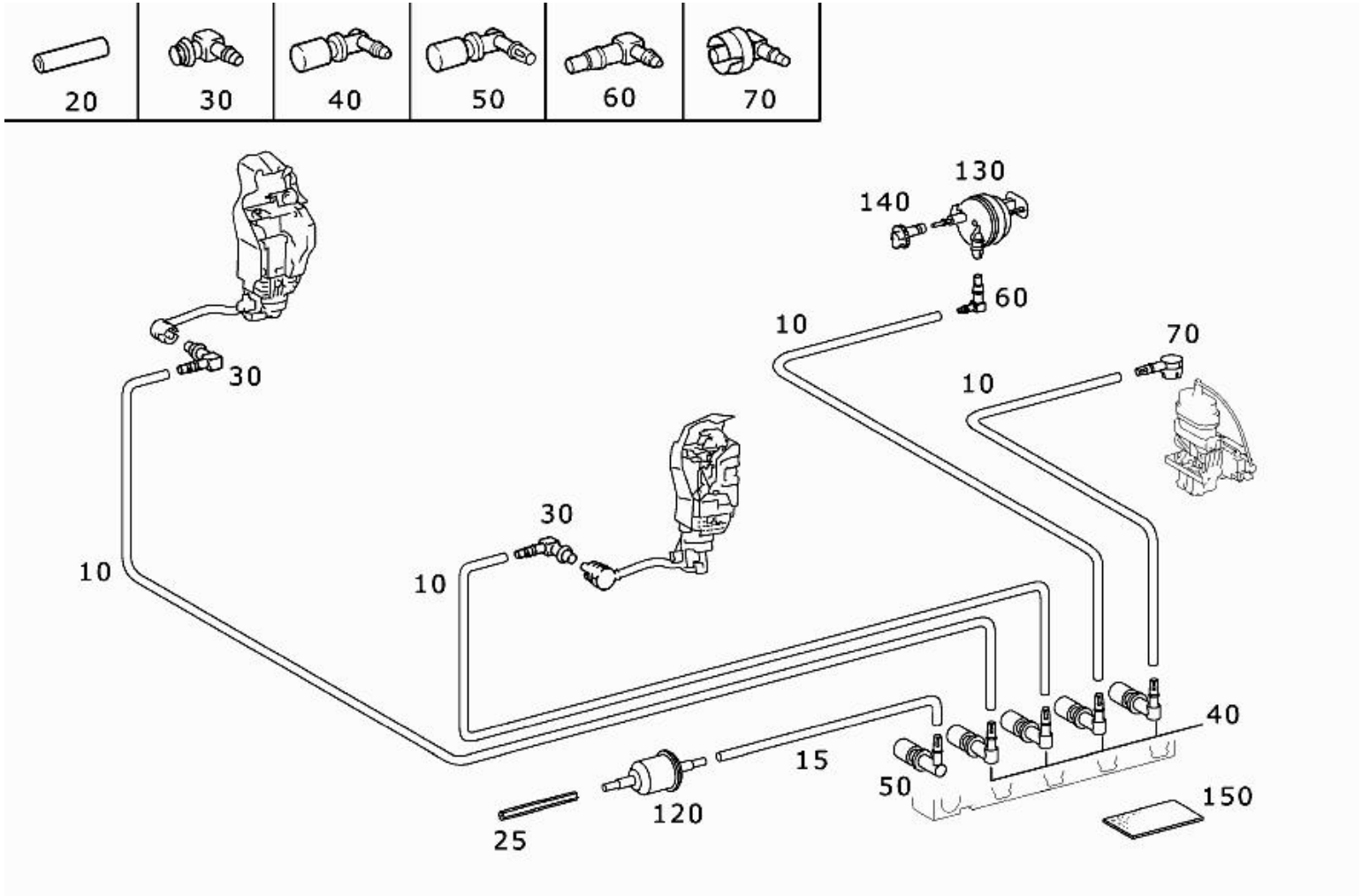









- Picture -

Mode	MD mode	Mod. des. overview	SL ROADSTER
FIN/MD	WDB 2304751F014217	Catalog	65P
VIN	WDBSK75F43F014217	Major assembly:	
Sales designation	SL 500	Major assembly	MD
Assortment class	Car	Group	80 - VACUUM SYSTEM / HYDRAULIC SYSTEM
Market	North America	Subgroup	045 - CENTRAL LOCKING MECHANISM
Picture number	B80045000113.040513		



## - Parts list -

Mode	MD mode	Mod. des. overview	SL ROADSTER
FIN/MD	WDB 2304751F014217	Catalog	65P
VIN	WDBSK75F43F014217	Major assembly:	
Sales designation	SL 500	Major assembly	MD
Assortment class	Car	Group	80 - VACUUM SYSTEM / HYDRAULIC SYSTEM
Market	North America	Subgroup	045 - CENTRAL LOCKING MECHANISM

Item no.	Part number	Designation/description	Quantity	Version
10	A 000 158 14 35	PLASTIC PIPE CONNECTION PIECE TO DOOR LOCK LEFT 4X1 MM  [404, 409] ORDER BY THE METER	NB	
10	A 000 158 14 35	PLASTIC PIPE CONNECTING PIECE TO DOOR LOCK RIGHT 4X1 MM  [404, 409] ORDER BY THE METER	NB	
10	A 000 158 14 35	PLASTIC PIPE CON. PIECE TO ELEMENT FUEL FILLER FLAP 4X1 MM  [404, 409] ORDER BY THE METER	NB	
10	A 000 158 14 35	PLASTIC PIPE CONNECTING PIECE TO TRUNK LID 4X1 MM  [404, 409] ORDER BY THE METER	NB	
15	A 000 158 14 35	PLASTIC PIPE ENGINE VACUUM CONNECTION 4X1 MM  [404, 409] ORDER BY THE METER	NB	
20	A 007 997 61 82	HOSE LINES TO DISTRIBUTOR OR CONN. PIECE 9X2.75 MM  [404, 409] ORDER BY THE METER	NB	
25	A 617 997 08 82	HOSE ON FILTER 10X5.5  [404] ORDER BY THE METER	NB	
30	A 202 805 01 44	PLUG TO LOCK	002	
40	A 202 800 05 53	CLUTCH TO CONNECTING PIECE	003	
40	A 202 800 05 53	CLUTCH TO ELEMENT AT FILLER NECK FLAP	001	
50	A 230 800 00 53	CLUTCH TO CONNECTING PIECE	001	
60	A 202 805 02 44	PLUG TO CONNECTING PIECE	001	
70	A 202 800 04 53	CLUTCH ON REAR LID	001	
120	A 000 078 06 56	AIR FILTER	001	
130	A 230 800 02 75	ELEMENT FILLER NECK FLAP	001	
140	A 215 800 00 79	GUIDE FILLER NECK RECESS	001	
150	A 126 787 00 97	FELT STRIP LINE TRUNK LID TO PUMP BRACKET 65X40X2MM	001	