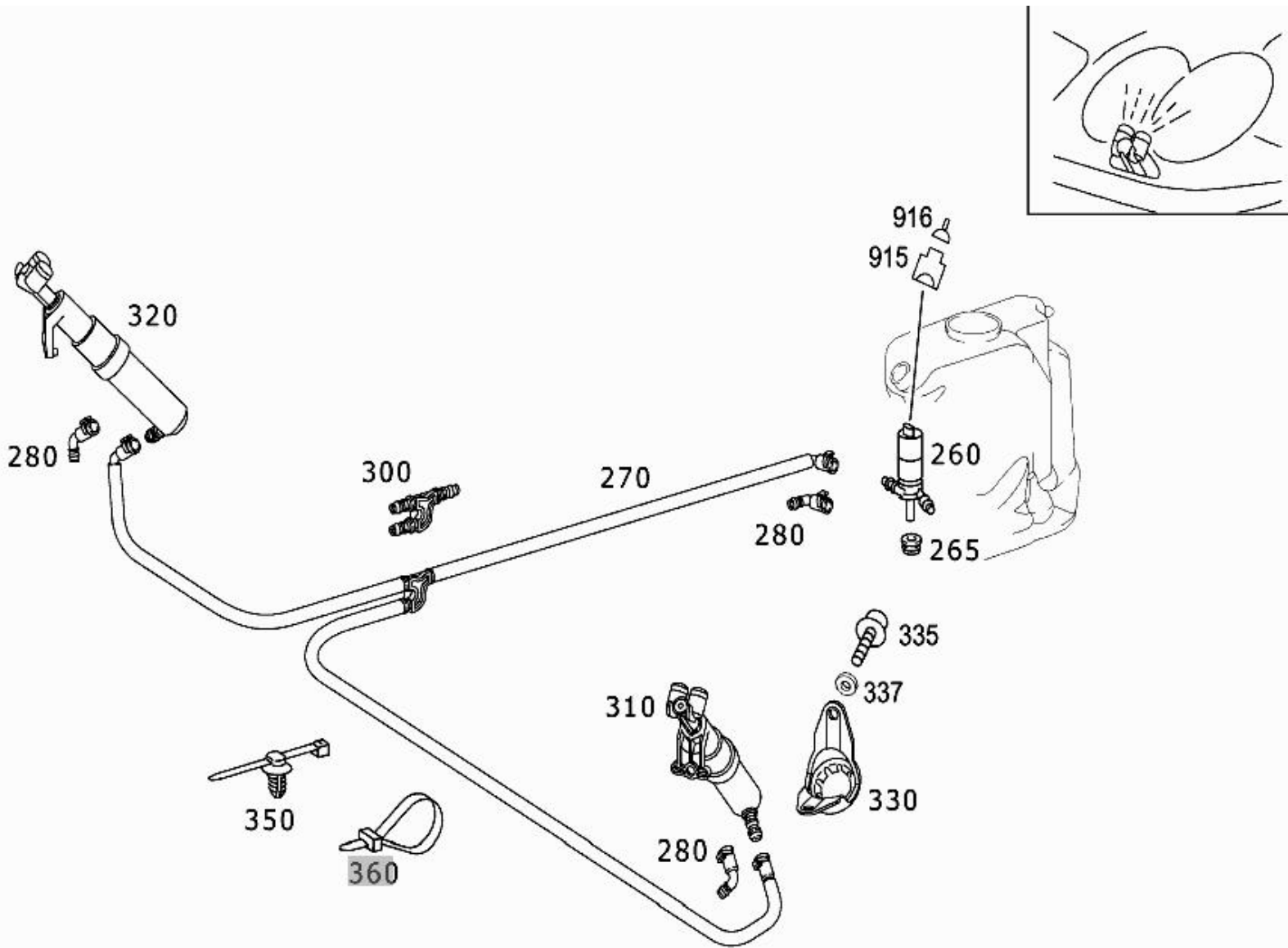


- Picture -

Mode	MD mode	Mod. des. overview	SL ROADSTER
FIN/MD	WDB 2304751F013880	Catalog	65P
VIN	WDBSK75F83F013880	Major assembly:	
Sales designation	SL 500	Major assembly MD	
Assortment class	Car	Group	86 - WASHER SYSTEM
Market	North America	Subgroup	030 - PANE WASHER, HEADLAMP WIPER/WASHER
Picture number	B86030000178.070621		





- Parts list -

Mode	MD mode	Mod. des. overview	SL ROADSTER
FIN/MD	WDB 2304751F013880	Catalog	65P
VIN	WDBSK75F83F013880	Major assembly:	
Sales designation	SL 500	Major assembly MD	
Assortment class	Car	Group	86 - WASHER SYSTEM
Market	North America	Subgroup	030 - PANE WASHER,HEADLAMP WIPER/WASHER

Item no.	Part number	Designation/description	Quantity	Version
10	A 230 869 00 20	DASHPOT W/O DETACHABLE BODY COMPONENTS Code: -P99	001	
20	A 230 869 00 08	COVER RESERVOIR Code: -P99	001	
25	A 230 869 01 98	SEAL COVER Code: -P99	001	
30	A 230 830 02 61	HEAT EXCHANGER Code: -P99+875	001	L
40	A 116 987 00 44	EXPANSION PLUG Code: -P99	002	
50	A 210 869 08 21	PUMP PANE WASHER SYSTEM M5/1 Optional with: A 210 869 09 21 Code: -P99	001	
50	A 210 869 09 21	PUMP PANE WASHER SYSTEM M5/1 Optional with: A 210 869 08 21 Code: -P99	001	
60	A 123 997 36 81	GROMMET WINDSHIELD WASHER PUMP IN CONTAINER Code: -P99	001	
70	A 009 997 62 81	GROMMET TANK TO A-PILLAR Code: -P99	001	
90	A 220 540 00 45	SWITCH WINDSHIELD WASHER WATER LEVEL S42 Code: -P99	001	
100	A 220 997 19 81	. GROMMET SWITCH IN RESERVOIR Code: -P99	001	
110	A 230 869 01 17	PIPE BETWEEN NECK AND RESERVOIR Code: -P99	001	
115	A 230 869 00 98	. SEAL FILLER NECK Code: -P99	001	
120	A 230 860 00 64	FITTING FILLER NECK	001	
130	A 230 869 03 94	. HOSE VENTILATION TANK	001	
140	A 230 869 01 08	. COVER FILLER NECK	001	
150	N 913023 006001	NUT FILLER NECK TO SIDE MEMBER M6	001	
160	N 304017 006018	HEXAGON HEAD BOLT RESERVOIR TO LONGITUDINAL MEMBER M6X12 Code: -P99	001	
170	A 115 997 06 81	GROMMET IN LONGITUDINAL MEMBER 23 MM Code: -P99	001	
200	A 230 860 01 92	HOSE PUMP TO NOZZLE Code: 875	001	

210	A 230 860 03 47	NOZZLE LEFT AND RIGHT R2/1 ☐ [002] To Chassis: F 145965 To Date: 31/03/2008 Excep...	002	
240	A 005 997 62 90	CABLE STRAP HOSE TO HINGE 3.3 X 260 MM ☐ [004] To Chassis: F 109634 To Date: 31/05/2005	001	
250	A 002 997 24 90	CABLE TIE HOSE ATTACHMENT 4.8X300 MM	002	
----	A 010 997 13 81	GROMMET INSTEAD OF PUMP Code: 875	002	L
260	A 210 869 11 21	PUMP HEADLAMP CLEANING SYSTEM M5/2 Code: -P99	001	
265	A 010 997 11 81	GROMMET HEADLAMP CLEANING SYSTEM PUMP IN RESERVOIR Code: -P99	001	
270	A 230 860 03 92	HOSE PUMP TO NOZZLE Code: -P99	001	
280	A 208 869 00 24	. CONNECTOR TO PUMP Code: -P99	001	
300	A 230 869 00 24	. CONNECTION DISTRIBUTOR Code: -P99	001	
310	A 230 860 01 47	TELESCOPIC NOZZLE LEFT ☐ [002] To Chassis: F 145965 To Date: 31/03/2008 Excep...	001	
320	A 230 860 02 47	TELESCOPIC NOZZLE RIGHT ☐ [002] To Chassis: F 145965 To Date: 31/03/2008 Excep...	001	
330	A 230 869 00 14	BRACKET LEFT AND RIGHT Code: -809	002	
335	N 304017 006020	HEXAGON HEAD BOLT BRACKET TO BUMPER M6X20 ☐ [002] To Chassis: F 145965 To Date: 31/03/2008 Excep...	006	
337	N 000125 006449	WASHER BRACKET TO BUMPER	006	
350	A 005 997 62 90	CABLE STRAP HOSE TO CROSSMEMBER FRONT 3.3 X 260 MM Code: -P99	005	
900	A 210 540 20 81	PIN BUSHING HOUSING WASHER NOZZLE HOSE HEATING 2-PIN MQS;R2/11	001	
901	A 008 545 63 26	FEMALE CONTACT WASHER NOZZLE HOSE HEATING 0.5-0.75 MM2 MQS;R2/11	NB	
901	A 000 545 69 80	GASKET WASHER NOZZLE HOSE HEATING 1.4-1.9 MM;R2/11	NB	
905	A 210 540 20 81	PIN BUSHING HOUSING WASHER FLUID LEVEL SWITCH 2-PIN MQS;S42	001	
906	A 008 545 63 26	FEMALE CONTACT WASHER FLUID LEVEL SWITCH 0.5-0.75 MM2 MQS;S42	NB	
906	A 000 545 69 80	GASKET WASHER FLUID LEVEL SWITCH 1.4-1.9 MM;S42	NB	
910	A 210 540 20 81	PIN BUSHING HOUSING WASHER NOZZLE HEATER 2-PIN MQS;R2/1	002	
911	A 008 545 63 26	FEMALE CONTACT HEATED WASHER NOZZLE 0.5-0.75 MM2 MQS;R2/1	NB	
911	A 000 545 69 80	GASKET HEATED WASHER NOZZLE 1.4-1.9 MM;R2/1	NB	

915	A 034 545 53 28	PIN BUSHING HOUSING HEADLAMP WIPER/WASHER PUMP 2-PIN JPT;M5/2  [006] To Chassis: F 122820 To Date: 30/03/2006 Excep...	001
916	A 000 540 27 05	ELECTRICAL CABLE HEADLAMP WIPER/WASHER PUMP 1.00 MM2 JPT;M5/2  [006, 008] To Chassis: F 122820 To Date: 30/03/2006 ...	NB
920	A 016 545 46 26	RECEPTACLE HOUSING WINDSHIELD WASHING PUMP 2-PIN MCP2.8;M5/1	001
921	A 014 545 83 26	FEMALE CONTACT WINDSHIELD WASHING PUMP 0.5-1.0 MM2 MCP2.8;M5/1	NB
921	A 000 545 28 39	CORE BUNDLE SEALING WINDSHIELD WASHING PUMP 0.5-1.0 MM;M5/1	NB