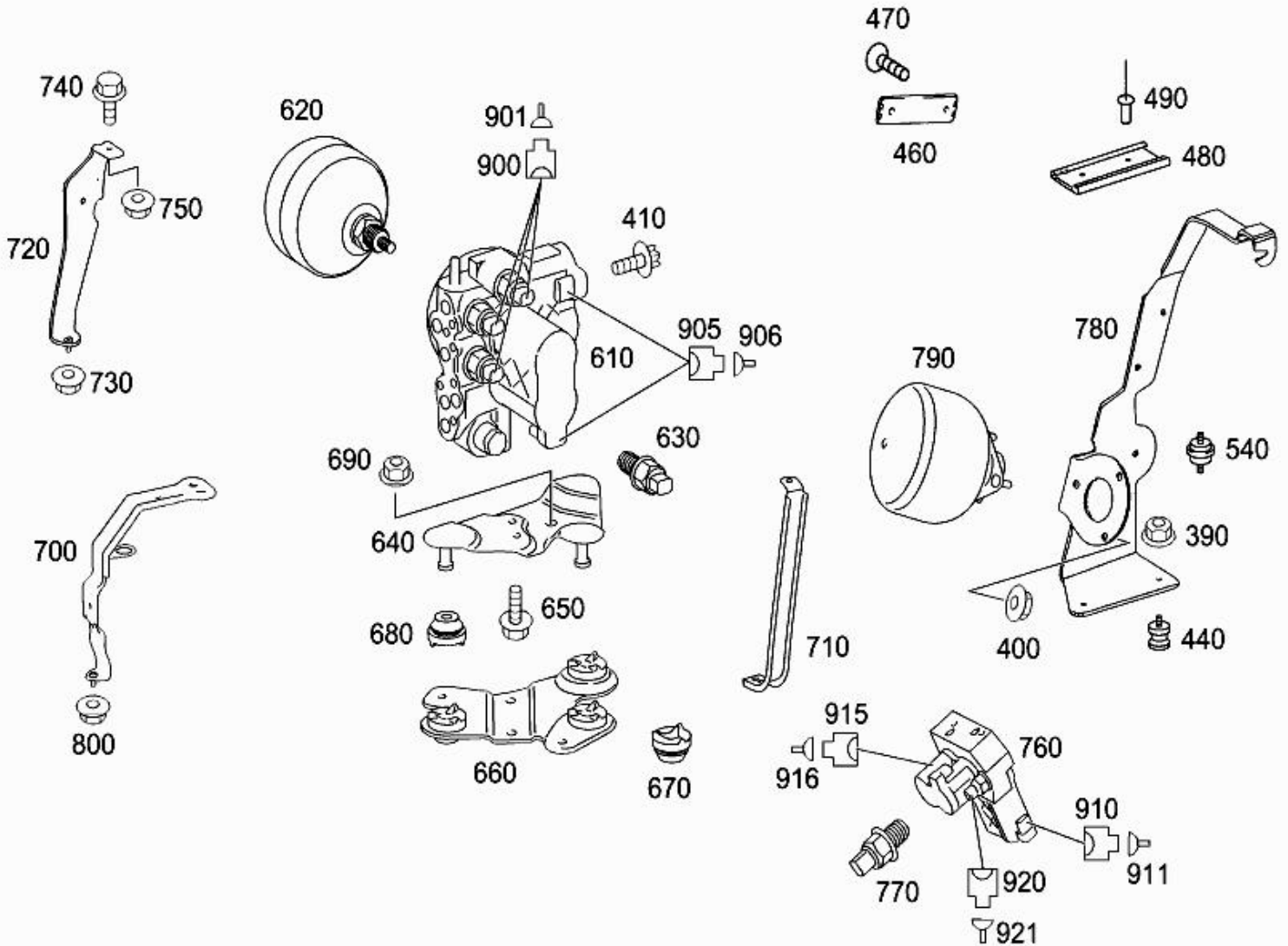


# - Picture -

<b>Mode</b>	MD mode	<b>Mod. des. overview</b>	SL ROADSTER
<b>FIN/MD</b>	WDB 2304711F127226	<b>Catalog</b>	65P
<b>VIN</b>	WDBSK71F67F127226	<b>Major assembly:</b>	
<b>Sales designation</b>	SL 550	<b>Major assembly MD</b>	
<b>Assortment class</b>	Car	<b>Group</b>	32 - SPRINGS, SUSPENSION AND HYDRAULIC SYSTEM
<b>Market</b>	North America	<b>Subgroup</b>	235 - OIL TANK
<b>VALVES USED FOR "ABC" HYDRAULIC SYSTEM</b>		<b>Picture number</b>	B32235000017.081017




**CODE 807** →



## - Parts list -






<b>Mode</b>	MD mode	<b>Mod. des. overview</b>	SL ROADSTER
<b>FIN/MD</b>	WDB 2304711F127226	<b>Catalog</b>	65P
<b>VIN</b>	WDBSK71F67F127226	<b>Major assembly:</b>	
<b>Sales designation</b>	SL 550	<b>Major assembly MD</b>	
<b>Assortment class</b>	Car	<b>Group</b>	32 - SPRINGS, SUSPENSION AND HYDRAULIC SYSTEM
<b>Market</b>	North America	<b>Subgroup</b>	235 - OIL TANK

### VALVES USED FOR "ABC" HYDRAULIC SYSTEM

Item no.	Part number	Designation/description	Quantity	Version
10	A 230 320 00 14	<b>DASHPOT</b> OIL RESERVOIR Code: 487	001	
20	A 220 993 04 01	<b>. SPRING</b> BELOW OIL FILTER Code: 487	001	
30	A 123 327 01 60	<b>. SEAL RING</b> BETWEEN PUSH SPRING AND FILTER Code: 487	001	
40	A 003 184 61 01	<b>. OIL FILTER</b> IN OIL RESERVOIR Code: 487	001	
50	A 210 997 35 81	<b>. GROMMET</b> ON OIL FILTER Code: 487	001	
60	A 210 327 00 60	<b>. SEAL RING</b> BELOW COVER Code: 487	001	
70	A 210 327 00 21	<b>. COVER</b> OIL RESERVOIR Code: 487	001	
80	A 210 327 00 72	<b>. NUT</b> OIL RESERVOIR Code: 487	001	
90	A 220 320 02 59	<b>. OIL DIPSTICK</b> IN OIL RESERVOIR Code: 487	001	
100	A 123 327 00 59	<b>.. PROTECTIVE CAP</b> OIL DIPSTICK UPPER PART Code: 487	001	
110	A 230 327 06 40	<b>BRACKET</b> OIL RESERVOIR TO WHEELHOUSE	001	
120	N 913023 006001	<b>NUT</b> BRACKET TO WHEELHOUSE M6 Code: 487  [012] To Chassis: F 137238 To Date: 31/05/2007	001	
120	N 913023 006001	<b>NUT</b> OIL TANK TO BRACKET M6 Code: 487  [012] To Chassis: F 137238 To Date: 31/05/2007	001	
120	N 913023 006001	<b>NUT</b> SCREENING TO SIDE MEMBER M6 Code: 487  [012] To Chassis: F 137238 To Date: 31/05/2007	002	
130	A 129 997 16 81	<b>GROMMET</b> OIL RESERVOIR TO WHEELHOUSE Code: 487	001	
140	N 000000 003648	<b>HEXALOBULAR BOLT</b> OIL TANK TO BRACKET M6X25 Code: 487	001	
160	A 230 327 01 86	<b>PROTECTIVE PLATE</b> AT OIL TANK <b>Replaced by:</b> A 230 320 01 86 +002 A 000 990 12 10 Code: 487	001	

160	A 230 320 01 86	<b>SCREENING</b> AT OIL TANK Code: 487	001
170	A 201 504 01 12	<b>RUBBER MOUNT</b> OIL RESERVOIR TO COVERING Code: 487	003
180	A 230 320 01 55	<b>SUCTION HOSE</b> FROM OIL TANK TO PUMP Code: 487	001
190	A 000 995 30 05	<b>CLAMP</b> TO RESERVOIR AND PUMP 26 MM Code: 487	001
390	N 913012 006001	<b>NUT</b> RUBBER BUFFER TO BRACKET M6 Code: 487	004
400	N 913023 006001	<b>NUT</b> PRESSURE ACCUMULATOR TO BRACKET M6 Code: 487 [012] To Chassis: F 137238 To Date: 31/05/2007	003
410	N 000000 004310	<b>HEXAGON HEAD BOLT</b> VALVE UNIT TO BRACKET M6X10 Code: 487	002
440	A 116 988 09 11	<b>BUFFER</b> AT BRACKET Code: 487	002
460	A 230 328 01 35	<b>PLATE</b> AT BRACKET Code: 487	001
470	N 000000 004447	<b>SCREW</b> MOUNTING PLATE TO BRACKET Code: 487	002
480	A 230 993 00 25	<b>SPRING</b> BRACKET IN SHELL RECESS Code: 487	001
490	A 003 990 34 97	<b>BLIND RIVET</b> SPRING CLIP MOUNTING 4X8	004
540	A 102 988 01 11	<b>BUFFER</b> AT BRACKET Code: 487	001
610	A 221 320 09 58	<b>VALVE UNIT</b> FRONT AXLE Code: 487 [005] From Chassis: F 109966 From Date: 23/06/2005 E...	001
620	A 221 327 02 15	<b>. PRESSURE ACCUMULATOR</b> FRONT AXLE Code: 487 [005] From Chassis: F 109966 From Date: 23/06/2005 E...	001
630	A 000 905 09 01	<b>. PRESSURE SENSOR</b> FRONT AXLE Code: 487	003
640	A 230 320 12 43	<b>BRACKET</b> FRONT VALVE UNIT Code: 487 [005] From Chassis: F 109966 From Date: 23/06/2005 E...	001
650	N 000000 004310	<b>HEXAGON HEAD BOLT</b> BRACKET MOUNTING M6X10 Code: 487 [005] From Chassis: F 109966 From Date: 23/06/2005 E...	002
660	A 230 320 04 35	<b>PLATE</b> FRONT VALVE UNIT Code: 487 [005] From Chassis: F 109966 From Date: 23/06/2005 E...	001
670	A 000 431 01 37	<b>. INTERMEDIATE BEARING</b> AT PLATE Code: 487 [005] From Chassis: F 109966 From Date: 23/06/2005 E...	003
680	A 000 431 01 37	<b>INTERMEDIATE BEARING</b> AT BRACKET Code: 487 [005] From Chassis: F 109966 From Date: 23/06/2005 E...	001
690	N 000000 003175	<b>NUT</b> BRACKET MOUNTING M8 Code: 487	002

700	A 230 320 10 43	<b>BRACKET</b> MOUNTING PLATE TO SIDE MEMBER Code: 487 [005] From Chassis: F 109966 From Date: 23/06/2005 E...	001
710	A 230 327 14 40	<b>BRACKET</b> FRONT VALVE UNIT Code: 487 [005] From Chassis: F 109966 From Date: 23/06/2005 E...	001
720	A 230 320 11 43	<b>BRACKET</b> MOUNTING PLATE TO SIDE MEMBER Code: 487 [005] From Chassis: F 109966 From Date: 23/06/2005 E...	001
730	N 913023 006001	<b>NUT</b> BRACKET MOUNTING M6 Code: 487 [005, 012] From Chassis: F 109966 From Date: 23/06/2005...	001
740	N 910105 008008	<b>HEXAGON HEAD BOLT</b> BRACKET MOUNTING M8X16 Code: 487 [005] From Chassis: F 109966 From Date: 23/06/2005 E...	001
750	N 000000 003175	<b>NUT</b> BRACKET MOUNTING M8 Code: 487	002
760	A 221 320 10 58	<b>VALVE UNIT</b> REAR AXLE Code: 487 [005] From Chassis: F 109966 From Date: 23/06/2005 E...	001
770	A 000 905 09 01	<b>PRESSURE SENSOR</b> REAR AXLE Code: 487	002
780	A 230 328 07 40	<b>BRACKET</b> REAR VALVE UNIT Code: 487 [005] From Chassis: F 109966 From Date: 23/06/2005 E...	001
790	A 221 328 00 15	<b>PRESSURE ACCUMULATOR</b> REAR AXLE Code: 487 [005] From Chassis: F 109966 From Date: 23/06/2005 E...	001
800	N 913023 006001	<b>NUT</b> BRACKET MOUNTING M6 Code: 487 [005, 012] From Chassis: F 109966 From Date: 23/06/2005...	004
900	A 220 540 06 81	<b>PIN BUSHING HOUSING</b> FRONT VALVE UNIT 3-PIN MQS;Y36/1 [005] From Chassis: F 109966 From Date: 23/06/2005 E...	003
901	A 008 545 63 26	<b>FEMALE CONTACT</b> FRONT VALVE UNIT 0.5-0.75 MM2 MQS;Y36/1 [005] From Chassis: F 109966 From Date: 23/06/2005 E...	NB
901	A 000 545 69 80	<b>GASKET</b> FRONT VALVE UNIT 1.4-1.9 MM;Y36/1 [005] From Chassis: F 109966 From Date: 23/06/2005 E...	NB
905	A 050 545 08 28	<b>PLUG</b> FRONT VALVE UNIT 4-PIN MLK;Y36/1 [005] From Chassis: F 109966 From Date: 23/06/2005 E...	001
905	A 022 545 27 26	<b>CLUTCH HOUSING</b> FRONT VALVE UNIT 4-PIN MLK1.2;Y36/1 [005] From Chassis: F 109966 From Date: 23/06/2005 E...	001
906	A 019 545 16 26	<b>CONTACT BUSHING</b> FRONT VALVE UNIT 0.75-1.0 MM2 MLK1.2;Y36/1 [005] From Chassis: F 109966 From Date: 23/06/2005 E...	NB
906	A 000 545 84 80	<b>GASKET</b> FRONT VALVE UNIT Y36/1 [005] From Chassis: F 109966 From Date: 23/06/2005 E...	NB
910	A 022 545 27 26	<b>CLUTCH HOUSING</b> REAR VALVE UNIT 4-PIN MLK1.2;Y36/2 Code: 487 [018] From Chassis: F 109966 From Date: 31/01/2006 E...	001

911	A 019 545 16 26	<b>CONTACT BUSHING</b> REAR VALVE UNIT 0.75-1.0 MM2 MLK1.2;Y36/2 Code: 487  [018] From Chassis: F 109966 From Date: 31/01/2006 E...	NB
915	A 050 545 08 28	<b>PLUG</b> REAR VALVE UNIT 4-PIN MLK;Y36/2 Code: 487  [018] From Chassis: F 109966 From Date: 31/01/2006 E...	001
916	A 019 545 16 26	<b>CONTACT BUSHING</b> REAR VALVE UNIT 0.75-1.0 MM2 MLK1.2;Y36/2 Code: 487  [018] From Chassis: F 109966 From Date: 31/01/2006 E...	NB
920	A 220 540 06 81	<b>PIN BUSHING HOUSING</b> REAR VALVE UNIT 3-PIN MQS;Y36/2 Code: 487  [018] From Chassis: F 109966 From Date: 31/01/2006 E...	002
921	A 008 545 63 26	<b>FEMALE CONTACT</b> REAR VALVE UNIT 0.5-0.75 MM2 MQS;Y36/2 Code: 487  [018] From Chassis: F 109966 From Date: 31/01/2006 E...	NB