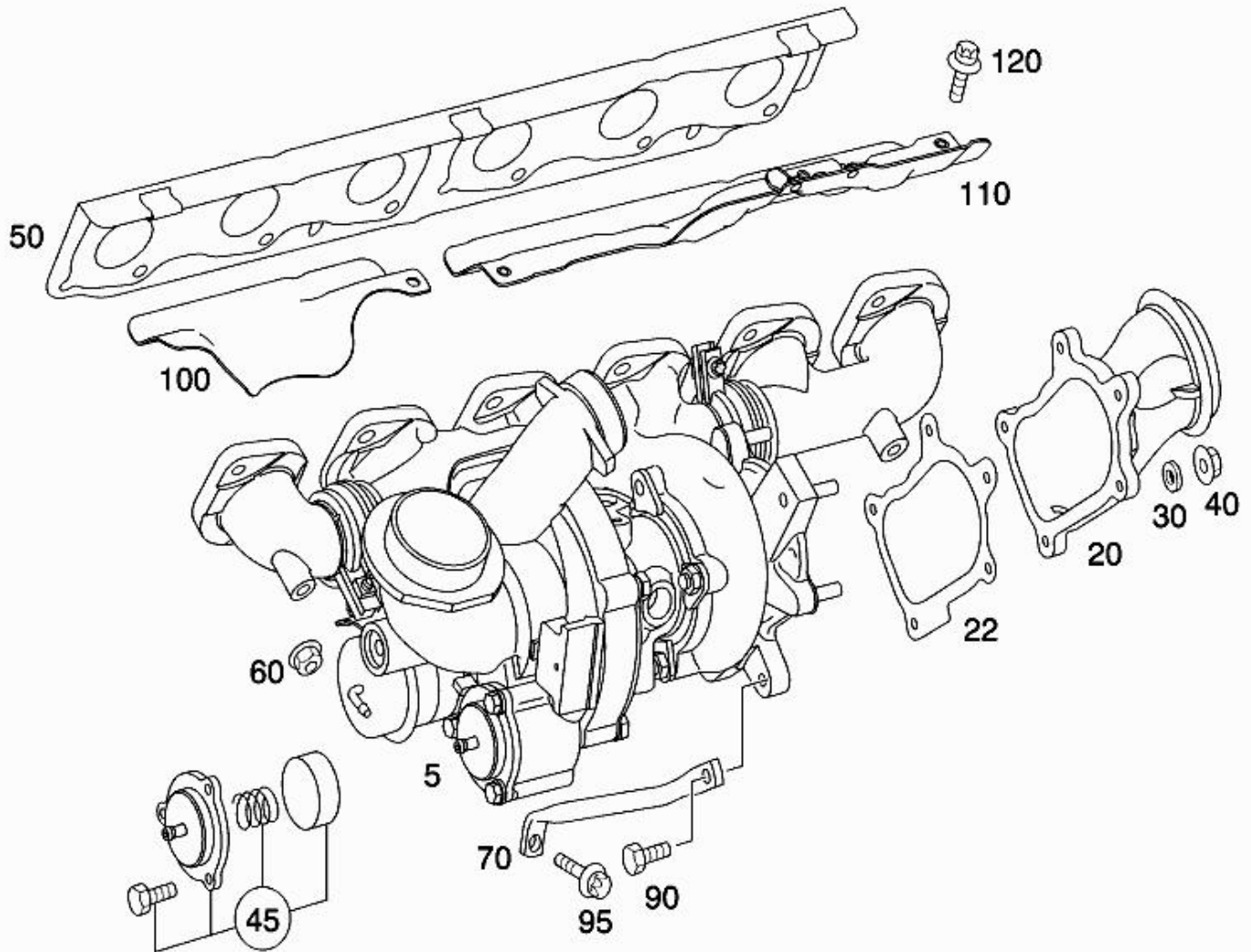


- Picture -

Mode	MD mode	Mod. des. overview	SL ROADSTER
FIN/MD	WDB 2304761F077249	Catalog	63C
VIN	WDBSK76F24F077249	Major assembly:	M - Engine
Sales designation	SL 600	Major assembly MD	275951 40 009018
Assortment class	Car	Group	09 - AIR CLEANER AND ENGINE CHARGING
Market	North America	Subgroup	075 - TURBOCHARGER
Picture number	B09075000214.030116		



- Parts list -

Mode	MD mode	Mod. des. overview	SL ROADSTER
FIN/MD	WDB 2304761F077249	Catalog	63C
VIN	WDBSK76F24F077249	Major assembly:	M - Engine
Sales designation	SL 600	Major assembly MD	275951 40 009018
Assortment class	Car	Group	09 - AIR CLEANER AND ENGINE CHARGING
Market	North America	Subgroup	075 - TURBOCHARGER

Item no.	Part number	Designation/description	Quantity	Version
5	A 275 090 12 80	TURBOCHARGER LEFT Code: -M014+F230 <input type="checkbox"/> [697] PART IS ONLY OR ALSO SUPPLIED AS RECONDITIONED PART	001	
10	A 275 090 24 80	TURBOCHARGER RIGHT <input type="checkbox"/> [697] PART IS ONLY OR ALSO SUPPLIED AS RECONDITIONED PART	001	
20	A 275 142 15 15	. FLANGE LEFT	001	
22	A 275 096 11 80	. GASKET LEFT	001	
25	A 275 142 16 15	. FLANGE RIGHT	001	
27	A 275 096 12 80	. GASKET RIGHT	001	
30	A 001 993 26 26	. CLAMPING DISC LEFT	005	
30	A 001 993 26 26	. CLAMPING DISC RIGHT	005	
40	A 271 142 00 72	. NUT LEFT	005	
40	A 271 142 00 72	. NUT RIGHT	005	
45	A 275 096 00 02	. COVER DECELERATION AIR VALVE TURBOCHARGER LEFT Code: F230	001	
45	A 275 096 00 02	. COVER DECELERATION AIR VALVE TURBOCHARGER RIGHT Code: F230	001	
50	A 275 142 10 80	GASKET EXH. MANIFOLD TO CYLINDER HEAD, LEFT	001	
50	A 275 142 10 80	GASKET EXH. MANIFOLD TO CYLINDER HEAD, RIGHT	001	
60	A 001 990 86 50	NUT EXH. MANIFOLD TO CYLINDER HEAD, LEFT	012	
60	A 001 990 86 50	NUT EXH. MANIFOLD TO CYLINDER HEAD, RIGHT	012	
70	A 275 096 10 45	SUPPORT EXHAUST GAS TURBOCHARGER,LEFT Code: F230	001	
80	A 275 096 15 45	SUPPORT EXHAUST GAS TURBOCHARGER,RIGHT Code: F230	001	
90	A 617 990 00 01	BOLT SUPPORT ON TURBOCHARGER, LEFT	001	
90	A 617 990 00 01	BOLT SUPPORT ON TURBOCHARGER, RIGHT	001	
95	N 910143 008002	HEXALOBULAR BOLT SUPPORT ON CRANKCASE, LEFT M8X25	001	
95	N 910143 008002	HEXALOBULAR BOLT SUPPORT ON CRANKCASE, RIGHT M8X25	001	

100	A 275 142 01 20	SCREENING PLATE LEFT	001
110	A 275 142 08 20	SCREENING PLATE LEFT Code: F230	001
120	N 000000 004310	HEXAGON HEAD BOLT SHIELD LEFT M6X10	002
150	A 275 142 04 20	SCREENING PLATE RIGHT	001
160	A 275 142 07 20	SCREENING PLATE RIGHT Code: F230	001
170	N 000000 004310	HEXAGON HEAD BOLT SHIELDING RIGHT M6X10	002
250	A 275 098 13 89	AIR LINE TURBOCHARGER TO PRESS. TRANSDUCER LEFT	001
260	A 275 098 12 89	AIR LINE TURBOCHARGER TO PRESS. TRANSDUCER, RI.	001
300	A 000 995 84 14	. LINE HOLDER	001
320	A 638 997 15 90	CLAMP AIR CONDUITS 10.5-13.0 MM	004
340	A 000 995 82 14	SPACER AIR CONDUITS	001
350	N 910143 006000	HEXALOBULAR BOLT AIR CONDUITS M6X12	001
400	A 275 090 30 77	LINE TURBOCHARGER LEFT TO CRANKCASE Code: F230	001
405	A 028 997 77 48	. SEAL RING OIL LINES	001
410	A 275 090 25 77	LINE TURBOCHARGER RIGHT TO CRANKCASE Code: F230	001
415	A 028 997 77 48	. SEAL RING OIL LINES	001
440	N 910142 006001	HEXALOBULAR BOLT OIL LINE TO CRANKCASE M6X16 Code: -F216-F221	002
450	A 279 187 01 80	SEAL FOR OVAL FLANGE OIL LINE LEFT TO CRANKCASE	001
450	A 279 187 01 80	SEAL FOR OVAL FLANGE OIL LINE RIGHT TO CRANKCASE BELOW	001
460	N 910142 006001	HEXALOBULAR BOLT OIL LINE TO TURBO-CHARGER M6X16	004
500	A 275 090 31 77	LINE TURBOCHARGER LEFT TO CRANKCASE	001
510	A 275 090 32 77	LINE TURBOCHARGER RIGHT TO CRANKCASE	001
540	N 000000 001422	HEXALOBULAR BOLT OIL LINE TO ENGINE,RIGHT M6X30	002
550	A 279 187 00 80	SEAL FOR OVAL FLANGE TO TURBOCHARGER, LEFT	002
550	A 279 187 00 80	SEAL FOR OVAL FLANGE TO TURBOCHARGER, RIGHT	002
555	A 005 997 16 45	SEAL RING RETURN LINE TO CYLINDER HEAD TO A 275 090 26 77	001
560	N 910142 006001	HEXALOBULAR BOLT OIL LINE TO TURBO-CHARGER M6X16	004
600	A 275 200 17 51	LINE COOLANT RETURN TURBOCHARGER LEFT TO CRANKCASE	001
610	A 275 200 18 51	LINE COOLANT RETURN TURBOCHARGER RIGHT TO CRANKCASE	001
630	A 028 997 79 48	. SEAL RING	004
640	N 910143 006002	HEXALOBULAR BOLT COOLING WATER RETURN LINE M6X20	002
650	N 000000 001146	HEXALOBULAR BOLT COOLANT LINE TO LID M6X16	002
660	N 910143 006002	HEXALOBULAR BOLT COOLANT LINE TO LID M6X20	001

700	A 275 200 21 51	LINE COOLANT SUPPLY CRANKCASE TO TURBOCHARGER LEFT Code: F230	001
710	A 275 200 16 51	LINE COOLANT SUPPLY CRANKCASE TO TURBOCHARGER RIGHT Code: F230	001
730	A 028 997 79 48	. SEAL RING	002
750	A 275 200 00 83	FITTING CYLINDER CRANKCASE,LEFT	001
760	N 000000 007940	BANJO BOLT COOLING WATER LINE TO ENGINE,LEFT B10	001
765	N 000000 004051	BANJO BOLT COOLING WATER LINE TO ENGINE,RIGHT	001
770	N 007603 014400	SEALING RING COOLING WATER LINE TO CYLINDER CRANKCASE	005
820	N 910143 006000	HEXALOBULAR BOLT COOLANT LINE TO LEFT OIL LINE M6X12 Code: F230	001