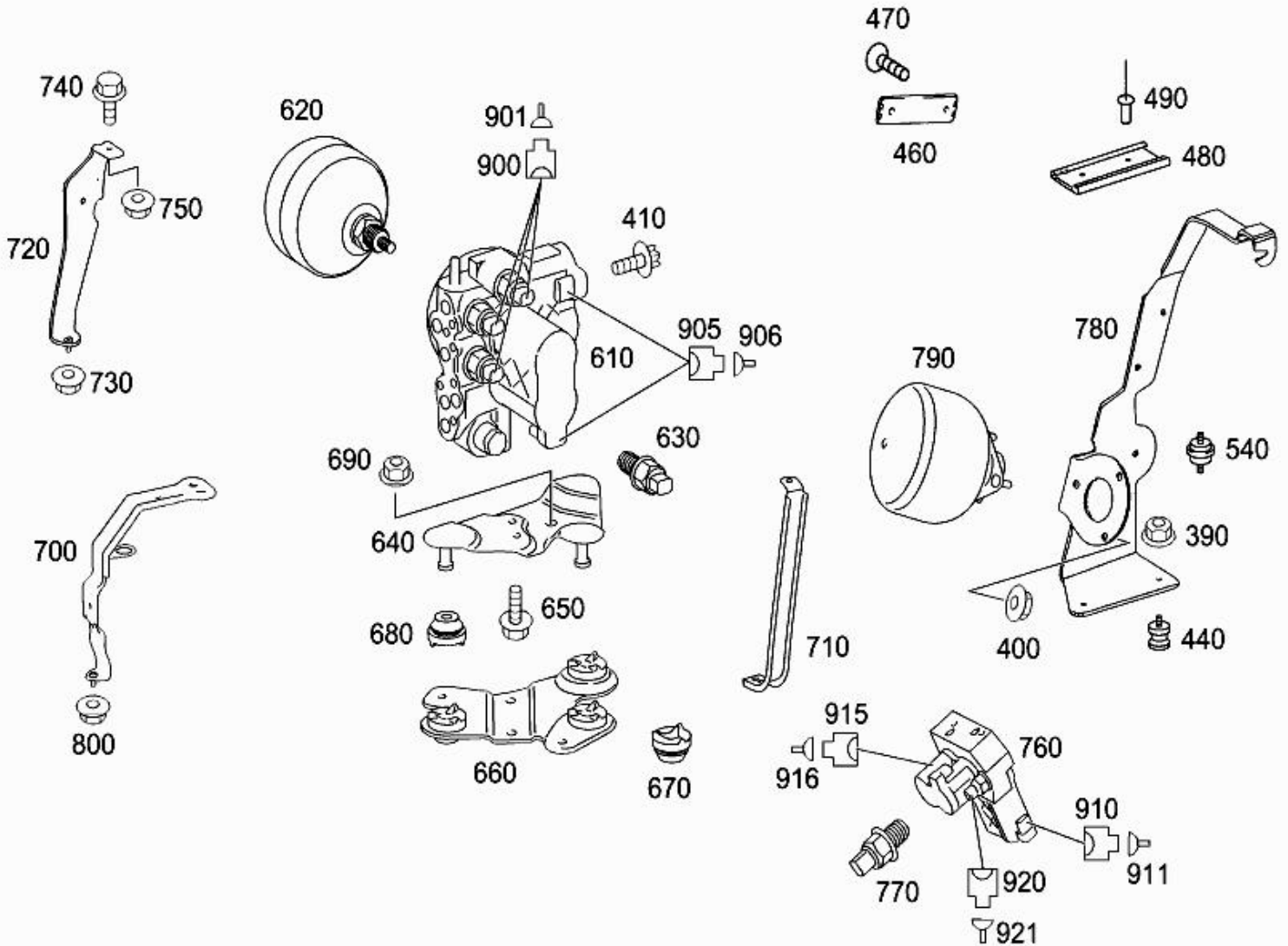


- Picture -

Mod	MD mode	Mod. des. overview	SL ROADSTER
FIN/MD	WDB 2304711F122517	Catalog	65P
VIN	WDBSK71F37F122517	Major assembly:	
Sales designation	SL 550	Major assembly MD	
Assortment class	Car	Group	32 - SPRINGS, SUSPENSION AND HYDRAULIC SYSTEM
Market	North America	Subgroup	235 - OIL TANK
VALVES USED FOR "ABC" HYDRAULIC SYSTEM		Picture number	B32235000017.081017




CODE 807 →



- Parts list -






Mode	MD mode	Mod. des. overview	SL ROADSTER
FIN/MD	WDB 2304711F122517	Catalog	65P
VIN	WDBSK71F37F122517	Major assembly:	
Sales designation	SL 550	Major assembly MD	
Assortment class	Car	Group	32 - SPRINGS, SUSPENSION AND HYDRAULIC SYSTEM
Market	North America	Subgroup	235 - OIL TANK

VALVES USED FOR "ABC" HYDRAULIC SYSTEM

Item no.	Part number	Designation/description	Quantity	Version
10	A 230 320 00 14	DASHPOT OIL RESERVOIR Code: 487	001	
20	A 220 993 04 01	. SPRING BELOW OIL FILTER Code: 487	001	
30	A 123 327 01 60	. SEAL RING BETWEEN PUSH SPRING AND FILTER Code: 487	001	
40	A 003 184 61 01	. OIL FILTER IN OIL RESERVOIR Code: 487	001	
50	A 210 997 35 81	. GROMMET ON OIL FILTER Code: 487	001	
60	A 210 327 00 60	. SEAL RING BELOW COVER Code: 487	001	
70	A 210 327 00 21	. COVER OIL RESERVOIR Code: 487	001	
80	A 210 327 00 72	. NUT OIL RESERVOIR Code: 487	001	
90	A 220 320 02 59	. OIL DIPSTICK IN OIL RESERVOIR Code: 487	001	
100	A 123 327 00 59	.. PROTECTIVE CAP OIL DIPSTICK UPPER PART Code: 487	001	
110	A 230 327 06 40	BRACKET OIL RESERVOIR TO WHEELHOUSE	001	
120	N 913023 006001	NUT BRACKET TO WHEELHOUSE M6 Code: 487  [012] To Chassis: F 137238 To Date: 31/05/2007	001	
120	N 913023 006001	NUT OIL TANK TO BRACKET M6 Code: 487  [012] To Chassis: F 137238 To Date: 31/05/2007	001	
120	N 913023 006001	NUT SCREENING TO SIDE MEMBER M6 Code: 487  [012] To Chassis: F 137238 To Date: 31/05/2007	002	
130	A 129 997 16 81	GROMMET OIL RESERVOIR TO WHEELHOUSE Code: 487	001	
140	N 000000 003648	HEXALOBULAR BOLT OIL TANK TO BRACKET M6X25 Code: 487	001	
160	A 230 327 01 86	PROTECTIVE PLATE AT OIL TANK Replaced by: A 230 320 01 86 +002 A 000 990 12 10 Code: 487	001	

160	A 230 320 01 86	SCREENING AT OIL TANK Code: 487	001
170	A 201 504 01 12	RUBBER MOUNT OIL RESERVOIR TO COVERING Code: 487	003
180	A 230 320 01 55	SUCTION HOSE FROM OIL TANK TO PUMP Code: 487	001
190	A 000 995 30 05	CLAMP TO RESERVOIR AND PUMP 26 MM Code: 487	001
390	N 913012 006001	NUT RUBBER BUFFER TO BRACKET M6 Code: 487	004
400	N 913023 006001	NUT PRESSURE ACCUMULATOR TO BRACKET M6 Code: 487 [012] To Chassis: F 137238 To Date: 31/05/2007	003
410	N 000000 004310	HEXAGON HEAD BOLT VALVE UNIT TO BRACKET M6X10 Code: 487	002
440	A 116 988 09 11	BUFFER AT BRACKET Code: 487	002
460	A 230 328 01 35	PLATE AT BRACKET Code: 487	001
470	N 000000 004447	SCREW MOUNTING PLATE TO BRACKET Code: 487	002
480	A 230 993 00 25	SPRING BRACKET IN SHELL RECESS Code: 487	001
490	A 003 990 34 97	BLIND RIVET SPRING CLIP MOUNTING 4X8	004
540	A 102 988 01 11	BUFFER AT BRACKET Code: 487	001
610	A 221 320 09 58	VALVE UNIT FRONT AXLE Code: 487 [005] From Chassis: F 109966 From Date: 23/06/2005 E...	001
620	A 221 327 02 15	. PRESSURE ACCUMULATOR FRONT AXLE Code: 487 [005] From Chassis: F 109966 From Date: 23/06/2005 E...	001
630	A 000 905 09 01	. PRESSURE SENSOR FRONT AXLE Code: 487	003
640	A 230 320 12 43	BRACKET FRONT VALVE UNIT Code: 487 [005] From Chassis: F 109966 From Date: 23/06/2005 E...	001
650	N 000000 004310	HEXAGON HEAD BOLT BRACKET MOUNTING M6X10 Code: 487 [005] From Chassis: F 109966 From Date: 23/06/2005 E...	002
660	A 230 320 04 35	PLATE FRONT VALVE UNIT Code: 487 [005] From Chassis: F 109966 From Date: 23/06/2005 E...	001
670	A 000 431 01 37	. INTERMEDIATE BEARING AT PLATE Code: 487 [005] From Chassis: F 109966 From Date: 23/06/2005 E...	003
680	A 000 431 01 37	INTERMEDIATE BEARING AT BRACKET Code: 487 [005] From Chassis: F 109966 From Date: 23/06/2005 E...	001
690	N 000000 003175	NUT BRACKET MOUNTING M8 Code: 487	002

700	A 230 320 10 43	BRACKET MOUNTING PLATE TO SIDE MEMBER Code: 487 [005] From Chassis: F 109966 From Date: 23/06/2005 E...	001
710	A 230 327 14 40	BRACKET FRONT VALVE UNIT Code: 487 [005] From Chassis: F 109966 From Date: 23/06/2005 E...	001
720	A 230 320 11 43	BRACKET MOUNTING PLATE TO SIDE MEMBER Code: 487 [005] From Chassis: F 109966 From Date: 23/06/2005 E...	001
730	N 913023 006001	NUT BRACKET MOUNTING M6 Code: 487 [005, 012] From Chassis: F 109966 From Date: 23/06/2005...	001
740	N 910105 008008	HEXAGON HEAD BOLT BRACKET MOUNTING M8X16 Code: 487 [005] From Chassis: F 109966 From Date: 23/06/2005 E...	001
750	N 000000 003175	NUT BRACKET MOUNTING M8 Code: 487	002
760	A 221 320 10 58	VALVE UNIT REAR AXLE Code: 487 [005] From Chassis: F 109966 From Date: 23/06/2005 E...	001
770	A 000 905 09 01	PRESSURE SENSOR REAR AXLE Code: 487	002
780	A 230 328 07 40	BRACKET REAR VALVE UNIT Code: 487 [005] From Chassis: F 109966 From Date: 23/06/2005 E...	001
790	A 221 328 00 15	PRESSURE ACCUMULATOR REAR AXLE Code: 487 [005] From Chassis: F 109966 From Date: 23/06/2005 E...	001
800	N 913023 006001	NUT BRACKET MOUNTING M6 Code: 487 [005, 012] From Chassis: F 109966 From Date: 23/06/2005...	004
900	A 220 540 06 81	PIN BUSHING HOUSING FRONT VALVE UNIT 3-PIN MQS;Y36/1 [005] From Chassis: F 109966 From Date: 23/06/2005 E...	003
901	A 008 545 63 26	FEMALE CONTACT FRONT VALVE UNIT 0.5-0.75 MM2 MQS;Y36/1 [005] From Chassis: F 109966 From Date: 23/06/2005 E...	NB
901	A 000 545 69 80	GASKET FRONT VALVE UNIT 1.4-1.9 MM;Y36/1 [005] From Chassis: F 109966 From Date: 23/06/2005 E...	NB
905	A 050 545 08 28	PLUG FRONT VALVE UNIT 4-PIN MLK;Y36/1 [005] From Chassis: F 109966 From Date: 23/06/2005 E...	001
905	A 022 545 27 26	CLUTCH HOUSING FRONT VALVE UNIT 4-PIN MLK1.2;Y36/1 [005] From Chassis: F 109966 From Date: 23/06/2005 E...	001
906	A 019 545 16 26	CONTACT BUSHING FRONT VALVE UNIT 0.75-1.0 MM2 MLK1.2;Y36/1 [005] From Chassis: F 109966 From Date: 23/06/2005 E...	NB
906	A 000 545 84 80	GASKET FRONT VALVE UNIT Y36/1 [005] From Chassis: F 109966 From Date: 23/06/2005 E...	NB
910	A 022 545 27 26	CLUTCH HOUSING REAR VALVE UNIT 4-PIN MLK1.2;Y36/2 Code: 487 [018] From Chassis: F 109966 From Date: 31/01/2006 E...	001

911	A 019 545 16 26	CONTACT BUSHING REAR VALVE UNIT 0.75-1.0 MM2 MLK1.2;Y36/2 Code: 487  [018] From Chassis: F 109966 From Date: 31/01/2006 E...	NB
915	A 050 545 08 28	PLUG REAR VALVE UNIT 4-PIN MLK;Y36/2 Code: 487  [018] From Chassis: F 109966 From Date: 31/01/2006 E...	001
916	A 019 545 16 26	CONTACT BUSHING REAR VALVE UNIT 0.75-1.0 MM2 MLK1.2;Y36/2 Code: 487  [018] From Chassis: F 109966 From Date: 31/01/2006 E...	NB
920	A 220 540 06 81	PIN BUSHING HOUSING REAR VALVE UNIT 3-PIN MQS;Y36/2 Code: 487  [018] From Chassis: F 109966 From Date: 31/01/2006 E...	002
921	A 008 545 63 26	FEMALE CONTACT REAR VALVE UNIT 0.5-0.75 MM2 MQS;Y36/2 Code: 487  [018] From Chassis: F 109966 From Date: 31/01/2006 E...	NB