

# Service Campaign Bulletin

01FILE: SERVICE: GROUP 00 OF SERVICE INFORMATION BINDER  
PARTS: GROUP I OF INFORMATION \_ PARTS & ACCESSORIES BINDER

Campaign No. 2007060001, June 2007

TO: ALL MERCEDES-BENZ CENTERS

SUBJECT: **MODEL 211, 216, 219, 221, 230**  
**MODEL YEAR 2007**  
**CHECK STARTER WIRING HARNESS ROUTING AND RE-ROUTE IF NECESSARY**  
**(M273 ENGINE)**

This Service Campaign has been initiated because DCAG has determined that on the affected vehicles it is possible that the routing of the starter wiring harness may not meet specifications. Failure of the starter, in isolated cases, may occur if this condition exists and is left uncorrected. Dealers will check the starter wiring harness routing and correct if necessary.

Prior to performing this Service Campaign:

- Please check VMI to determine if the vehicle is involved in the Campaign and if it has been previously repaired.
- Please review the entire Service Campaign bulletin and follow the procedure steps exactly as described.

Attached is a sample copy of a letter which owners of the affected vehicles will receive.

Please note that Recall and Service Campaigns **do not expire** and may also be performed on a vehicle with a vehicle status indicator.

Approximately 573 vehicles are affected.

Order No. P-SC-2007060001

This bulletin has been created and maintained in accordance with MBUSA-SLP S423QH001, Document and Data Control, and MBUSA-SLP S424HH001, Control of Quality Records.

## Procedure

### A. CHECK INSULATION OF STARTER WIRING HARNESS

1. Raise vehicle on lift; refer to appropriate WIS document AR00.60-P-1000 based on vehicle model.
2. Remove center and rear engine compartment paneling.
3. Check insulation of starter wiring harness circuit 50 (A, Figure 1).
4. Perform one of the following, depending on results of step 3:
  - If insulation **is not** damaged: Perform Procedure B.
  - If insulation **is** damaged: Perform Procedures B and C.

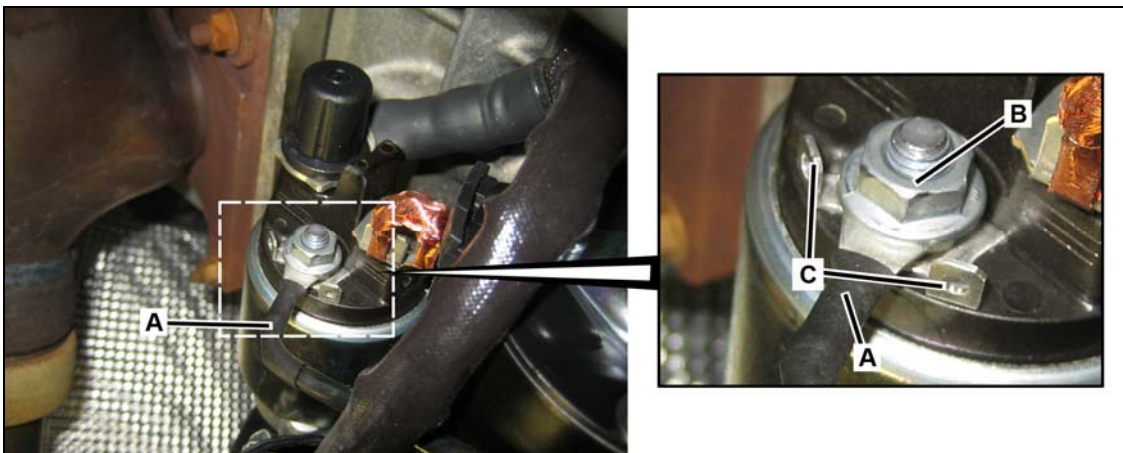


Figure 1

### B. REPOSITION CONNECTOR OF STARTER WIRING HARNESS

1. Disconnect battery ground cables; refer to one of the following WIS documents based on vehicle model.
  - Model 211: AR54.10-P-0003T.
  - Model 219 AR54.10-P-0003TX.
  - Models 216/221: AR54.10-P-0003SX.
  - Model 230 AR54.10-P-0003R.
2. Remove starter wiring harness M6 nut (B).
3. Perform one of the following, depending on results of Procedure A, step 3:
  - If insulation **is not** damaged: Proceed to step 4.
  - If insulation **is** damaged: Proceed to Procedure C.

4. Position starter wiring harness connector (B) as shown in Figure 1—between two metal tabs (C)—and reinstall M6 nut.
  - Torque nut to 8 Nm.
5. Reconnect battery ground cables, again referring to appropriate WIS document from step 1.
  - Perform basic programming.

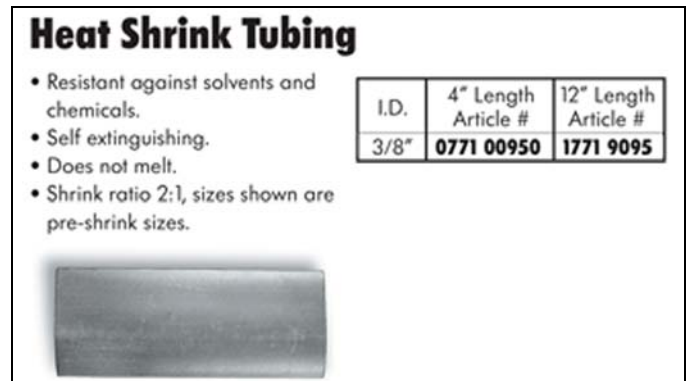
### C. INSTALL HEAT-SHRINK TUBE ON STARTER WIRING HARNESS

1. Install heat-shrink tube (A, Figure 1) at electrical connector of starter wiring harness.
  - Use 3/8" (9.5 mm) wide, 1" (25 mm) long tube.

**Note:**

**The heat-shrink tube can be obtained from Wurth USA, Inc., (see Figure 2 for part number) or similar company.**

2. Position starter wiring harness connector (B) as shown in Figure 1—between two metal tabs (C)—and reinstall M6 nut.
  - Torque nut to 8 Nm.
3. Reconnect battery ground cables, again referring to appropriate WIS document from Procedure **B**, step 1.
  - Perform basic programming.



**Figure 2**

### Parts Information

Qty.	Part Name	Part Number	Estimated Replacement Rate
1	Heat-Shrink Tube <sup>1)</sup>	N/A	1%

**Note:**

<sup>1)</sup> Submit as local purchase HEAT00100, Qty of 1, no handling (parts reimbursement is \$1.00).

**Note:**

- Please be aware that only the part number(s) referenced in the Campaign Bulletin is approved for use to repair the vehicle. Repairs performed using any other part(s) will not have been performed in accordance with the campaign. Accordingly, warranty claims submitted with reference to an improper part number(s) will be denied.
- Please note that the information in the most current versions of EPC and StarTime supersedes the parts and warranty information in the Campaign Bulletin.
- The following allowable labor operation should be used when submitting a warranty claim for this repair:

### Warranty Information

#### Repair 1 (Check insulation and reposition connector)

**Operation:** Insulation of Electrical Line of Circuit 50, Check (02-5725)  
Connector of Circuit 50 at Starter, Reposition (02-5727) <sup>1)</sup>

Damage Code	Operation Number	Labor Time (hrs.)	Model Indicator(s)
59 910 36 8	02-5725	0.3	AA, AD, DA, R5, T9, TA, Y3
	02-5727	0.4	AA, AD, DA, Y3
		0.6	R5, T9, TA

**Note:**

<sup>1)</sup> Op-code 02-5727 includes battery ground cable connect/disconnect and basic programming.

#### Repair 2 (Check insulation, reposition connector, and replace insulation)

**Operation:** Insulation of Electrical Line of Circuit 50, Check (02-5725)  
Connector of Circuit 50 at Starter, Reposition (02-5727) <sup>1)</sup>  
Insulation of Electrical Line of Circuit 50, Replace (02-5728)

Damage Code	Operation Number	Labor Time (hrs.)	Model Indicator(s)
59 910 36 7	02-5725	0.3	AA, AD, DA, R5, T9, TA, Y3
	02-5727	0.4	AA, AD, DA, Y3
		0.6	R5, T9, TA
	02-5728	0.1	AA, AD, DA, R5, T9, TA, Y3

**Note:**

<sup>1)</sup> Op-code 02-5727 includes battery ground cable connect/disconnect and basic programming.



Mercedes-Benz USA, LLC

Alan McLaren  
Vice President, Customer Services

**Service Campaign #2007060001**

June, 2007

Dear Mercedes-Benz Owner,

On some Model Year 2007 Mercedes-Benz E-Class, CLS-Class, CL-Class, S-Class or SL-Class vehicles it is possible that the routing of the starter wiring harness may not meet specifications. Failure of the starter, in isolated cases, may occur if this condition exists in your vehicle and is left uncorrected.

Our records indicate that your vehicle is included in a population of vehicles where this situation may occur. In order to assure your continued satisfaction with your vehicle we are asking that you bring your vehicle to an authorized Mercedes-Benz dealer. Your authorized Mercedes-Benz dealer will check, and if required correct the starter wire harness routing in your vehicle free of charge. The working time required is approximately two hours. As a matter of normal service process, your authorized Mercedes-Benz dealer will also check for other repair measures which might be applicable to your vehicle and this may increase the required working time. Please contact your authorized Mercedes-Benz dealer for additional information and to schedule an appointment at your earliest convenience. Please mention Service Campaign#2007060001

If you are no longer the vehicle owner, or have a change of address, please complete the reverse side of this letter and return the complete letter in the enclosed envelope. If this is a leased vehicle and the lessor and registered owner receive this notice, please forward this information by first class mail to the lessee.

Please contact your authorized Mercedes-Benz dealer should you have any questions or encounter any difficulty regarding this service. If your dealer is unable to remedy your situation please contact us at 1-(800) FOR-MERCEdes (1-800-367-6372).

We apologize for any inconvenience this situation may cause you.

Sincerely,

A handwritten signature in black ink, appearing to be "Alan McLaren".

One Mercedes Drive, P.O. Box 350, Montvale, NJ 07645-0350, Phone 1-800-FOR-MERCEdes (1-800-367-6372), Fax (201) 476-6211  
www.MBUSA.com



Mercedes-Benz - registered trademarks of DaimlerChrysler AG, Stuttgart, Federal Republic of Germany



P-SC-2007060001