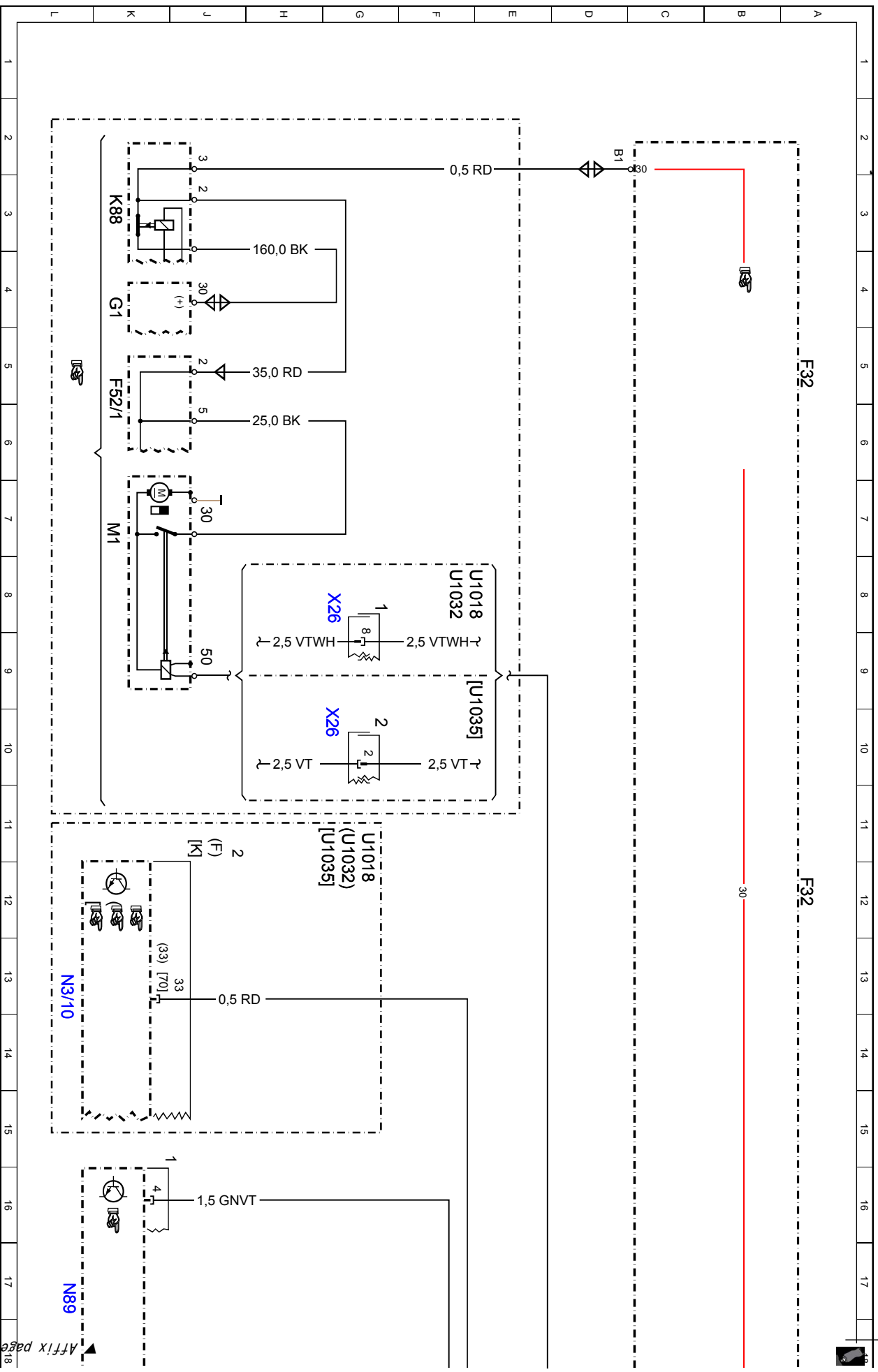


Document number : pe15.00-p-2103-97rka
Document title : Wiring diagram for engine start/stop

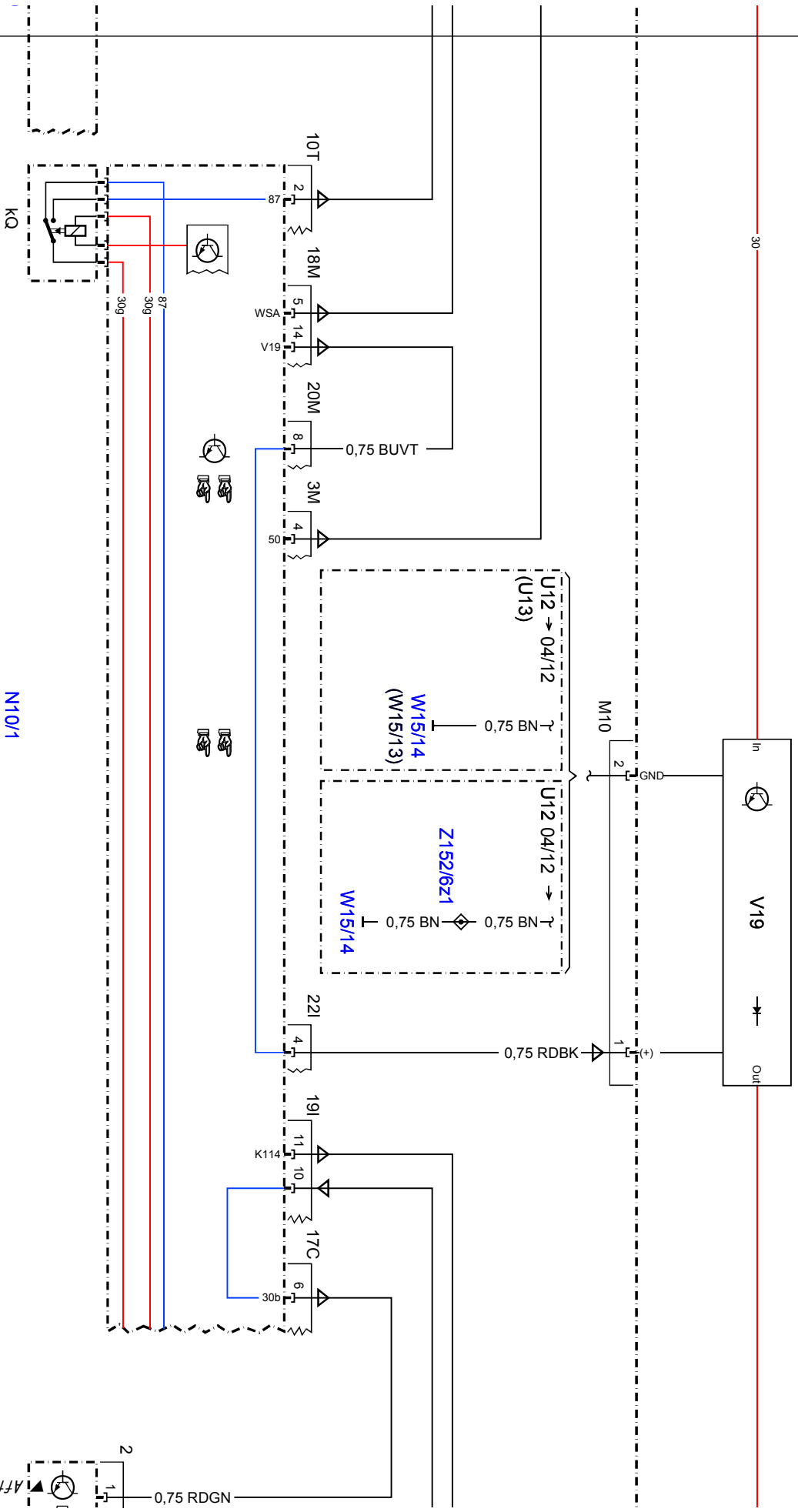
Code :	Designation :	Position :
A0	Color code key	56L
A80	Intelligent servo module for DIRECT SELECT	40L
F25/7	ECO start/stop function additional battery relay fuse	43L
F32	Front electrical prefuse box	5A
F32	Front electrical prefuse box	12A
F32	Front electrical prefuse box	44A
F32	Front electrical prefuse box	20A
F32	Front electrical prefuse box	36A
F32	Front electrical prefuse box	28A
F32ft59	Prefuse 159	44C
F52/1	Firewall through-hole plating	5K
G1	On-board electrical system battery	4K
G1/13	ECO start/stop function additional battery	49L
K114	ECO start/stop function additional battery relay	46L
K88	Pyrotechnical separator	3K
M1	Starter	7K
NI0/1	Front SAM control unit with fuse and relay module	26L
NI0/1k0	Backup relay	20L
N3/10	ME-SFI [ME] control unit	13L
N73	Electronic ignition switch control unit	36L
N89	Transmission oil auxiliary pump control unit	17L
UI018	Valid for gasoline engine 276	11G
UI018	Valid for gasoline engine 276	8F
UI032	Valid for gasoline engine 278 and gasoline engine 157	11G
UI032	Valid for gasoline engine 278 and gasoline engine 157	8F
UI035	Valid for gasoline engine 279	11H
UI035	Valid for gasoline engine 279	9F
UI2	Valid for left-hand drive vehicles	24E
UI2	Valid for left-hand drive vehicles	27E
UI3	Valid for right-hand drive vehicles	24E
VI9	ECO start/stop function diode	288
WI0/4	ECO start/stop function additional battery ground point	50G
WI5/13	Left rear frame floor assembly ground point	26F
WI5/14	Right rear frame floor assembly ground point	26F
WI5/14	Right rear frame floor assembly ground point	28G
W71/2	Right rear compartment ground point	46G
X26	Engine wiring harness/engine compartment electrical connector	8G
X26	Engine wiring harness/engine compartment electrical connector	10G
Z152/6z1	Ground line connector sleeve	28F



▲ Affix page 2 here ▼

F32

30



18 19 20 21 22 23 24 25 26 27 28 29 30 31 32 33 34

Cut here

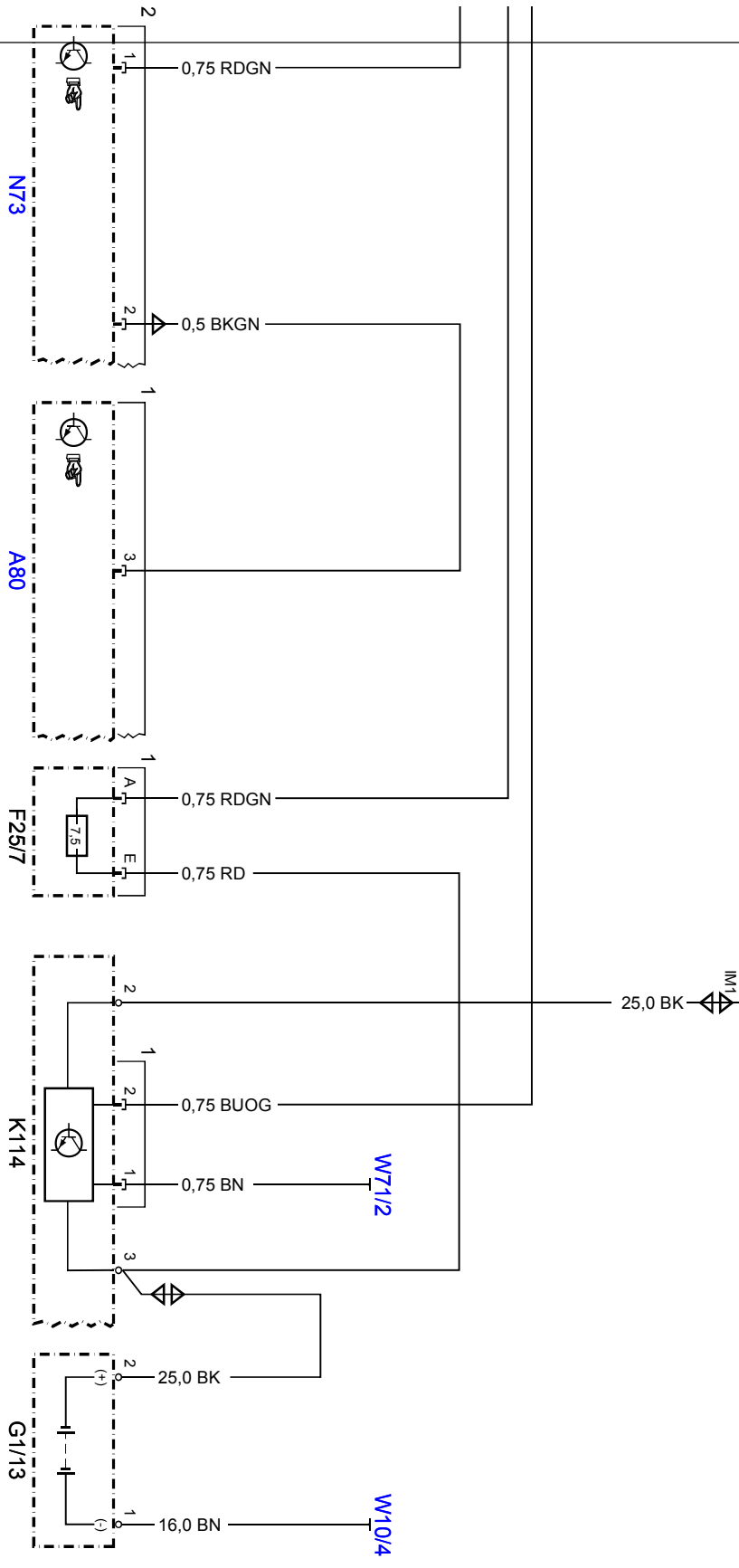
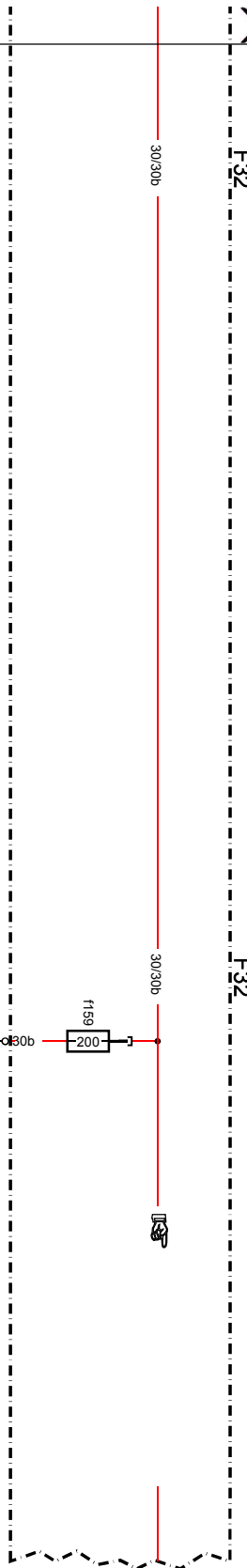


F32

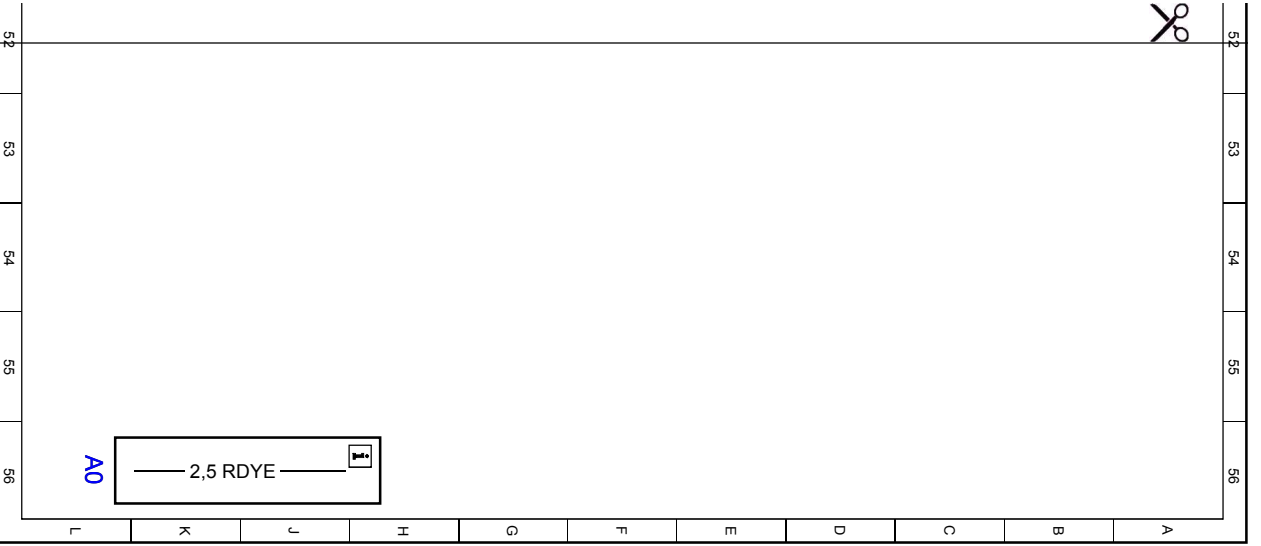
F32

30/30b

30/30b



Cut here



Cut here