

# 2022 SL Roadster Order Guide



# Table of Contents

1	<a href="#">General Information</a>
2	<a href="#">What's New</a>
3	<a href="#">Models</a>
4	<a href="#">Equipment</a>
4.1	<a href="#">Standard Equipment</a>
4.2	<a href="#">Exterior Paint Colors</a>
4.3	<a href="#">Wheels</a>
4.4	<a href="#">Interior Upholstery</a>
4.6	<a href="#">Interior Trims</a>
4.7	<a href="#">Packages</a>
4.8	<a href="#">Options</a>
4.9	<a href="#">Specifications</a>
5	<a href="#">Options In Detail</a>
6	<a href="#">Gallery</a>

# General Information

## Important Note

The information presented in this guide is based on the most current information available and is intended for internal use only. Mercedes-Benz reserves the right to make changes at any time, without notice, to colors, materials, equipment, special specifications and models.

Pricing may not yet be finalized for some models or options.

Due to variances among monitors and printers the colors that appear on your screen and printouts may not be exact.

For illustrative purposes, some images may show vehicles with European Specification.

## Revision History

Date	Description
03/22/2022	PIP pages published

## MY22 SL 63 4MATIC+ Roadster

### Product Overview

The new Mercedes-AMG SL, the new edition of an icon, returns to its roots with a classic soft top and sporty character. At that same time, the luxurious roadster as a 2+2 seater is particularly suitable for everyday use and puts its power down on the road with all-wheel drive for the first time. High-tech components such as the AMG ACTIVE RIDE CONTROL suspension with active anti-roll stabilization, rear-axle steering, the optionally available AMG ceramic high-performance composite brake system and the standard-fit DIGITAL LIGHT with projection function sharpen the sporty profile. In combination with the AMG 4.0-litre V8 biturbo engine, this results in a driving experience of the highest order. As a consistent Performance Luxury model, Mercedes-AMG in Affalterbach has developed the SL completely independently.

## Exterior Styling

### SL 63 4MATIC+ Roadster

Highlighted features:

- New standard 21" AMG 10-Spoke Y-Design Wheels (RWF) not shown
- AMG brake calipers painted in yellow
- Seamless door handles add to the sleek look of the new SL
- AMG-specific radiator grille with vertical struts in high-gloss chrome, framed by the innovative DIGITAL LIGHT with projection function
- Dynamic front apron with generous air intakes and filics in high-gloss black for targeted air routing
- Hallmark SL elongated bonnet with strongly contoured powerdome
- Slightly sloping boot lid with curved full LED tail lights and integrated, automatically extending rear wing for higher downforce at high speeds
- Hallmark SL elongated bonnet with strongly contoured powerdome
- AMG-specific rear apron with assertive trapezoidal AMG twin taillipe trim elements and pronounced diffuser in high-gloss black
- The SL has grown bigger than its predecessor - and has become a 2+2 seater
- In about only 15 seconds, new SL can open and close the soft top electro-hydraulically at a vehicle speed of up to 60 km/h

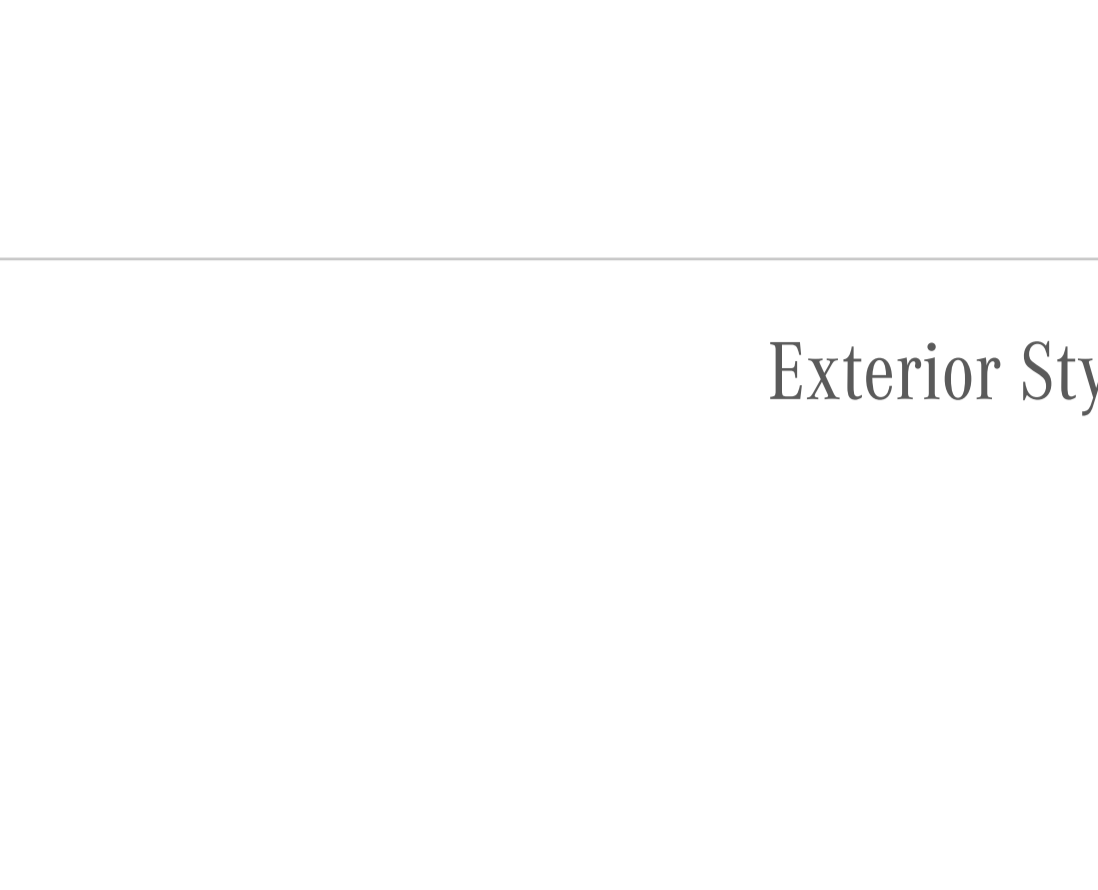


## Interior Styling

### SL 63 4MATIC+ Roadster

Highlights include:

- The interior of the Mercedes-AMG SL is characterised by perfect craftsmanship and innovative equipment
- Free-standing central display with 11.9-inch screen is positioned on the centre console
- To avoid disturbing light reflections when the fabric top is open, the touchscreen can be electrically adjusted in inclination from 12° to 32°.
- 12.3-inch driver's display with AMG-specific graphics, designed for ease of readability even in direct sunlight
- Electrically adjustable AMG sports seats with AMG badge as standard offer a high level of seating comfort and plenty of lateral support when cornering, even at high speed
- High-quality seat covers in black nappa leather (801A) and nappa-look covers on the instrument panel and door panels provide tactile highlights
- AMG DRIVE UNIT and capacitive display buttons on the standard AMG Performance Steering Wheel in Nappa Leather
- The SL 63 pampers its occupants with AIRSCARF neck-level heating (403), heated steering wheel (443), and multicouontour front seats with massage (399) as standard



## Exterior Styling Packages

### AMG Night Package (P60)

Optional. Not with 773 or 750.

This package includes:

- High Gloss Black Front Splitter
- High Gloss Black A-Wing Trim Strip
- High Gloss Black Front Wing Trim
- High Gloss Black Exterior Mirrors
- High Gloss Black Side Sill Panel Insert
- High Gloss Black Rear Apron Insert
- Exhaust Outlets in Black Chrome

\* shown with optional wheel code RWG and paint code 956U



### AMG Stealth Package (DG1)

Optional. Only with (P60 or 773) and (RWG or RWE). Not with 750.

This package includes:

- Darkened AMG Front Grille
- Darkened Headlamps
- Darkened Tail Lights
- High Gloss Black Vehicle Badging (excluding front star)

\* shown in conjunction with 773, optional wheel code RWE, and paint code 993U

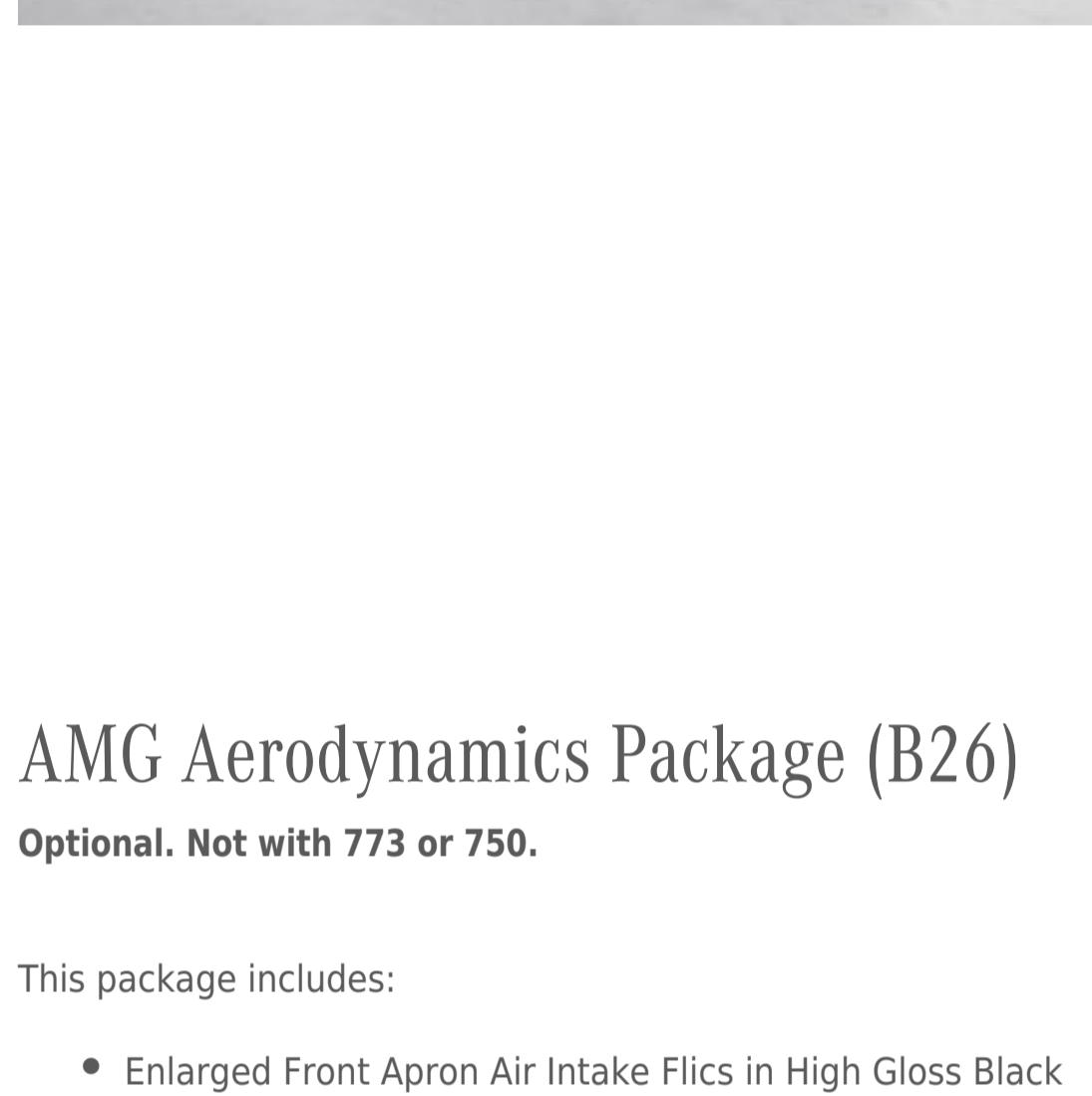
### AMG Exterior Carbon Fibre Package (773)

Optional. Contains B28. Not with P60, B26, or 750.

This package includes:

- Carbon Fibre Exterior Mirror Caps
- Carbon Fibre Front Splitter
- Carbon Fibre Front Apron Flics
- Carbon Fibre Side Sill Panel Insert
- Carbon Fibre Rear Diffuser
- High Gloss Black A-Wing Trim Strip
- High Gloss Black Front Wing Trim
- High Gloss Black Rear Apron Insert
- Exhaust Outlets in Black Chrome

\* shown with optional wheel code RWD and paint code 993U



### AMG Aerodynamics Package (B26)

Optional. Not with 773 or 750.

This package includes:

- Enlarged Front Apron Air Intake Filics in High Gloss Black
- Rear Apron Air Intake Filics in High Gloss Black
- Outward Rear Diffuser Attachment in High Gloss Black
- Carbon Fibre Active Aerodynamic Underbody Element

\* shown with standard wheel code RWF and paint code 054U

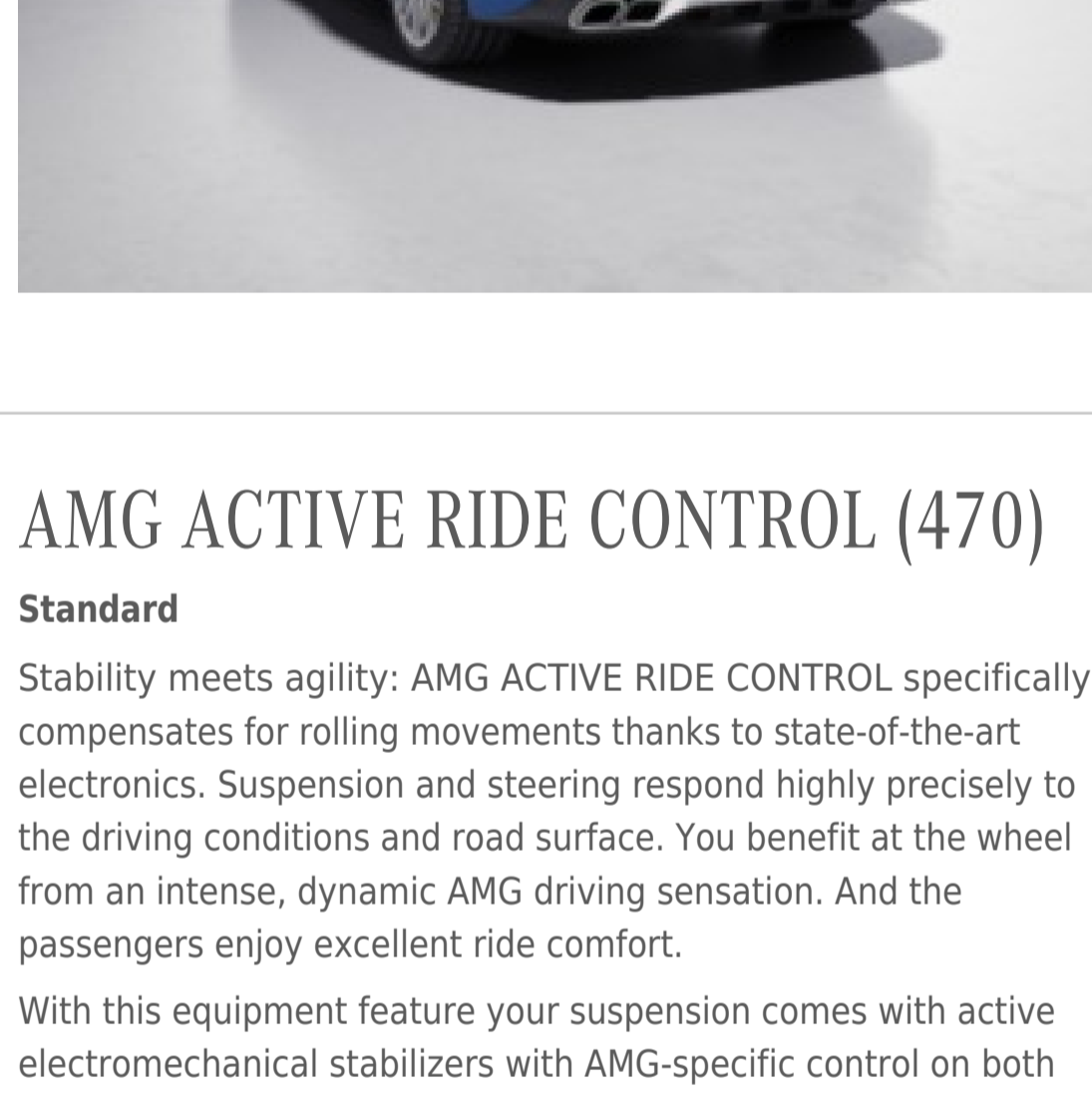
### AMG High Gloss Chrome Package (750)

Optional. Not with P60, B26, or 773.

This package includes:

- High Gloss Chrome Front Splitter
- High Gloss Chrome A-Wing Trim Strip
- High Gloss Chrome Side Sill Panel Insert
- High Gloss Chrome Rear Apron Insert

\* shown with optional wheel code RWD and paint code 953U



### Rear Axle Steering (201)

Standard

AMG rear axle steering takes you around bends faster and heightens your driving pleasure. Depending on the vehicle's speed, you can enjoy particularly agile and spontaneous steering characteristics like in a vehicle with a short wheelbase, or you can drive with the effortless superiority and stability of a long-wheelbase luxury saloon on the motorway.

On each rear wheel there is an electric actuator motor which can turn the wheels in the same direction as the front wheels or in the opposite direction, depending on the vehicle's speed. In extremely sporty situations, adaptation by the rear axle steering can avoid ESP intervention.

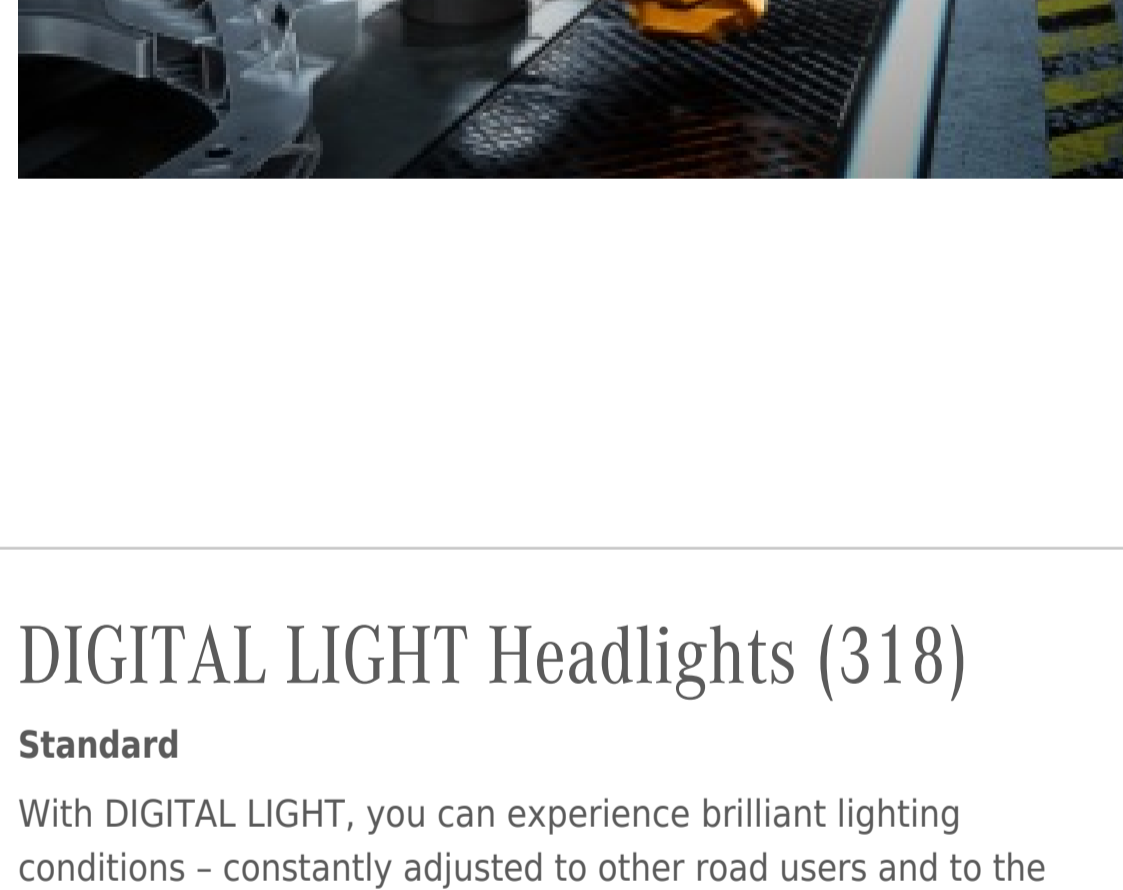
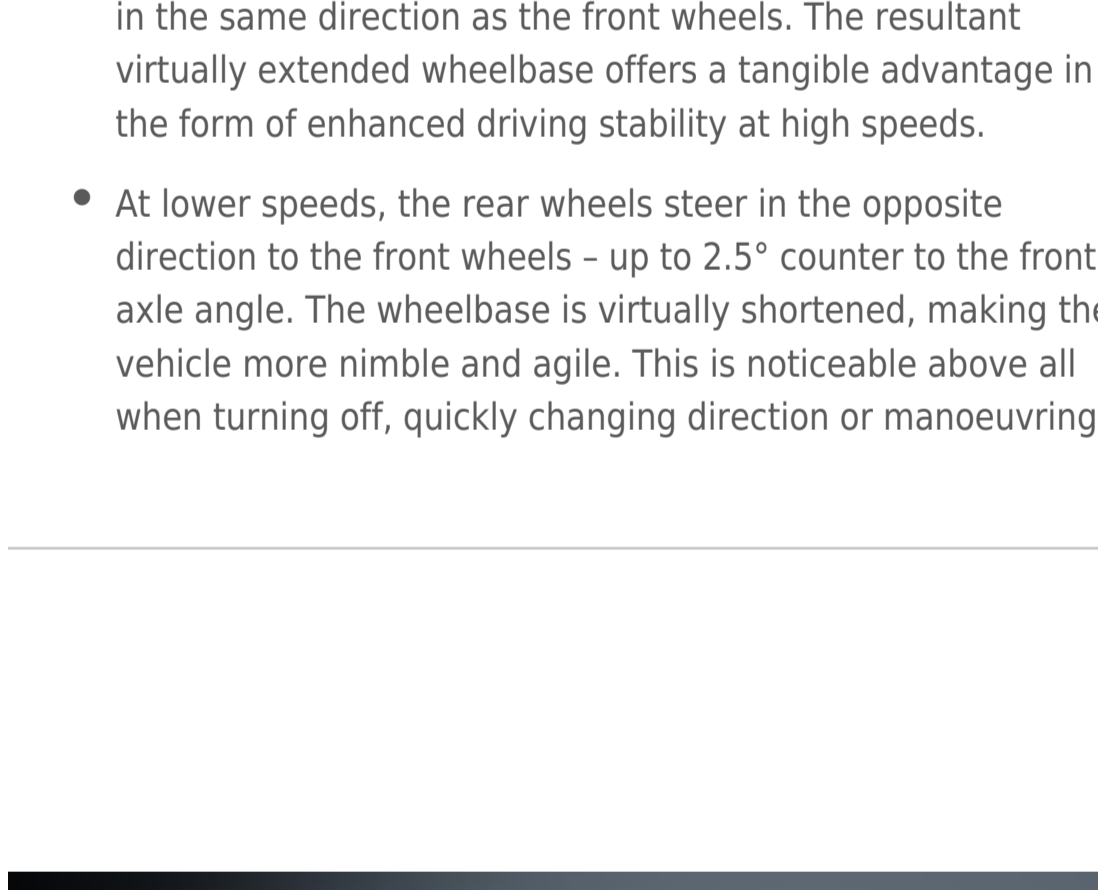
- In the higher speed range, the rear wheels steer up to 0.7° in the same direction as the front wheels. The resultant virtually extended wheelbase offers a tangible advantage in the form of enhanced driving stability at high speeds.
- At lower speeds, the rear wheels steer in the opposite direction to the front wheels - up to 2.5° counter to the front axle angle. The wheelbase is virtually shortened, making the vehicle more nimble and agile. This is noticeable above all when turning off, quickly changing direction or manoeuvring.

### AMG ACTIVE RIDE CONTROL (470)

Standard

Stability meets agility: AMG ACTIVE RIDE CONTROL specifically compensates for rolling movements thanks to state-of-the-art electronics. Suspension and steering respond highly precisely to the driving conditions and road surface. You benefit at the wheel from an intense, dynamic AMG driving sensation. And the passengers enjoy excellent ride comfort.

With this equipment feature your suspension comes with active electromechanical stabilizers with AMG-specific control on both axes. The sensors analyse both driving manoeuvres and the road surface up to 1000 times per second. On this basis, body movements are compensated for immediately with maximum precision. The result: when cornering, accelerating and braking, plus when driving over road surface damage, the effects of rolling are reduced to a minimum.



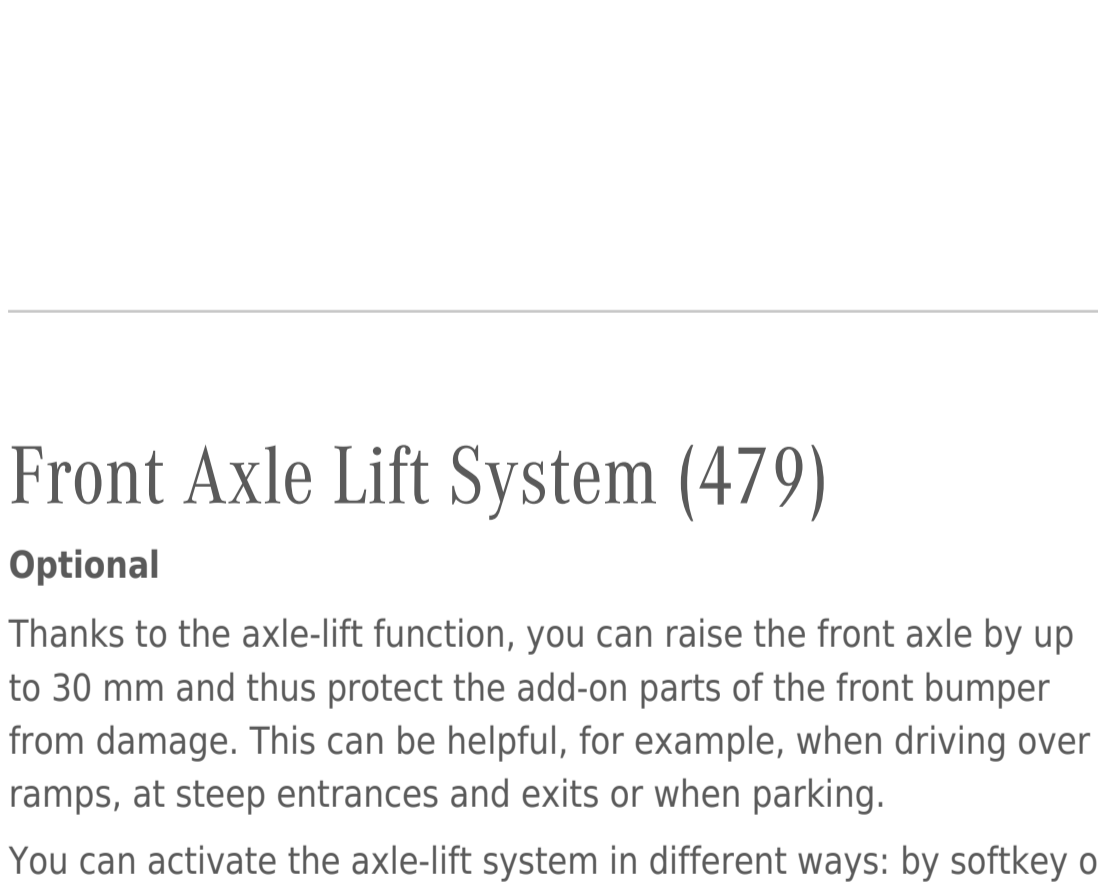
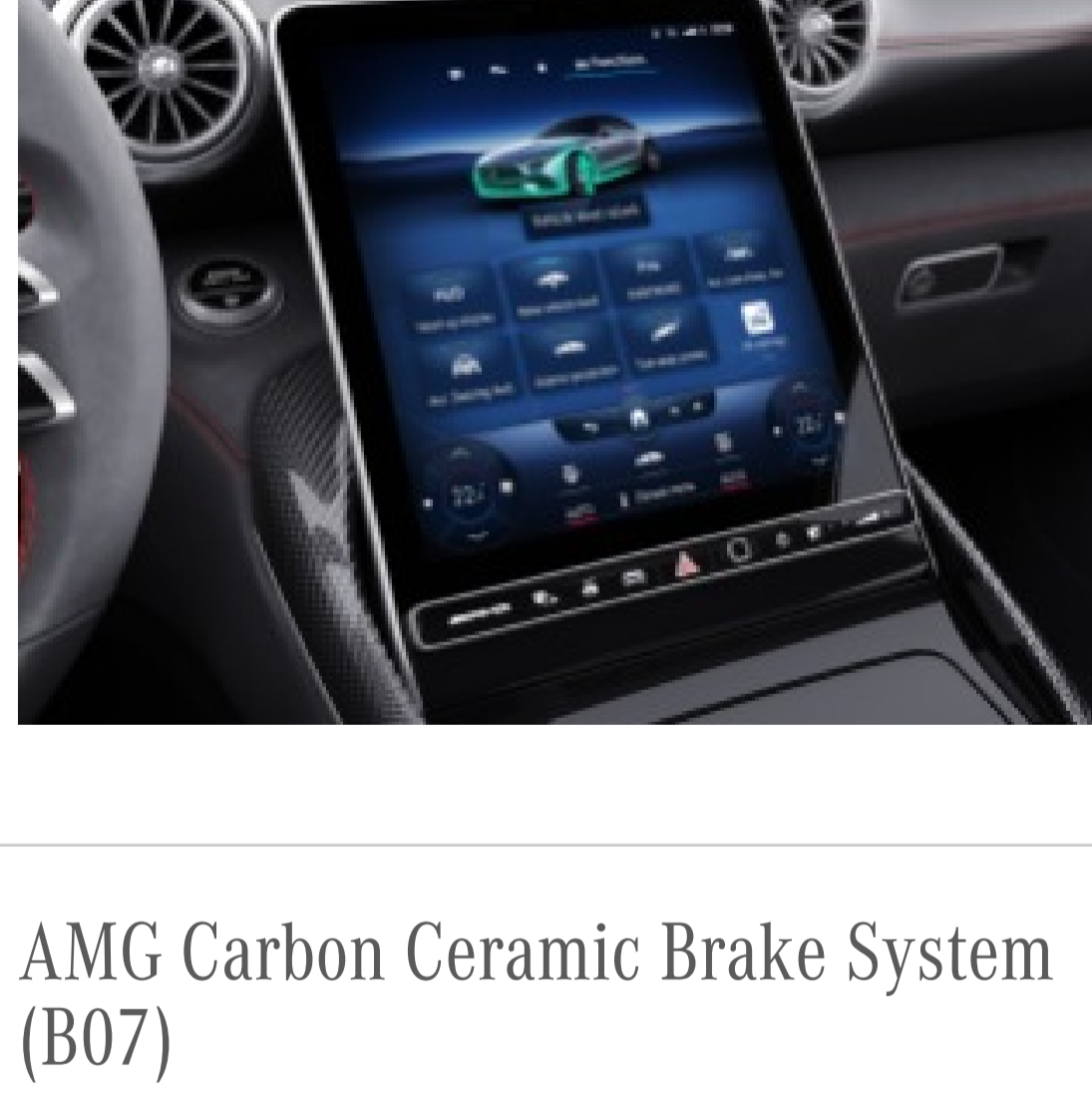
### DIGITAL LIGHT Headlights (318)

Standard

With DIGITAL LIGHT, you can experience brilliant lighting conditions - constantly adjusted to other road users and to the surroundings. The system works like a projector and responds with brilliant light to changing traffic, road or weather conditions. The Highbeam Assist Plus also omits oncoming traffic or vehicles in front with a level of precision never seen before.

Topographical compensation equally reduces glare to a minimum. It also keeps the headlamp range as constant as possible even in the event of altitude changes, such as when driving over the brow of a hill or through a dip in the road.

- HD system with projection module (more than 1 million pixels per headlamp) and MULTIBEAM LED background module (B4 high-performance LEDs per headlamp)
- With data from the camera, sensors and navigation system, the brightness value for each individual pixel is calculated virtually in real time
- Adaptive Highbeam Assist Plus (anti-dazzle continuous high beam)
- Adaptive all-LED tail lights with multi-level functionality and sequential turn signal lights



### Front Axle Lift System (479)

Optional

Thanks to the axle-lift function, you can raise the front axle by up to 30 mm and thus protect the add-on parts of the front bumper from damage. This can be helpful, for example, when driving over ramps, at steep entrances and exits or when parking.

You can activate the axle-lift system in different ways: by softkey or via stored GPS data. In this case the front axle of your vehicle is always lifted when you come to a certain place, for example your garage entrance.

Lifting the front axle takes about 12 seconds. From a speed of 40 km/h, the front axle lowers again automatically.

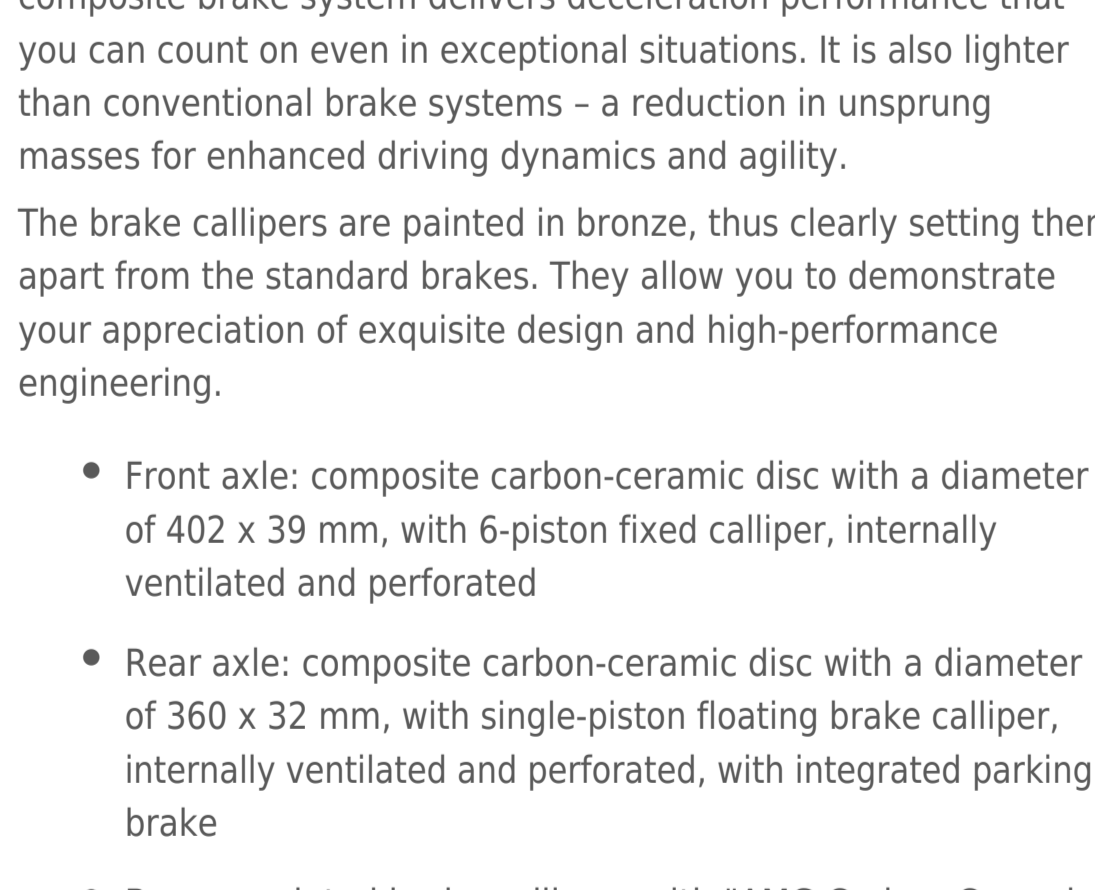
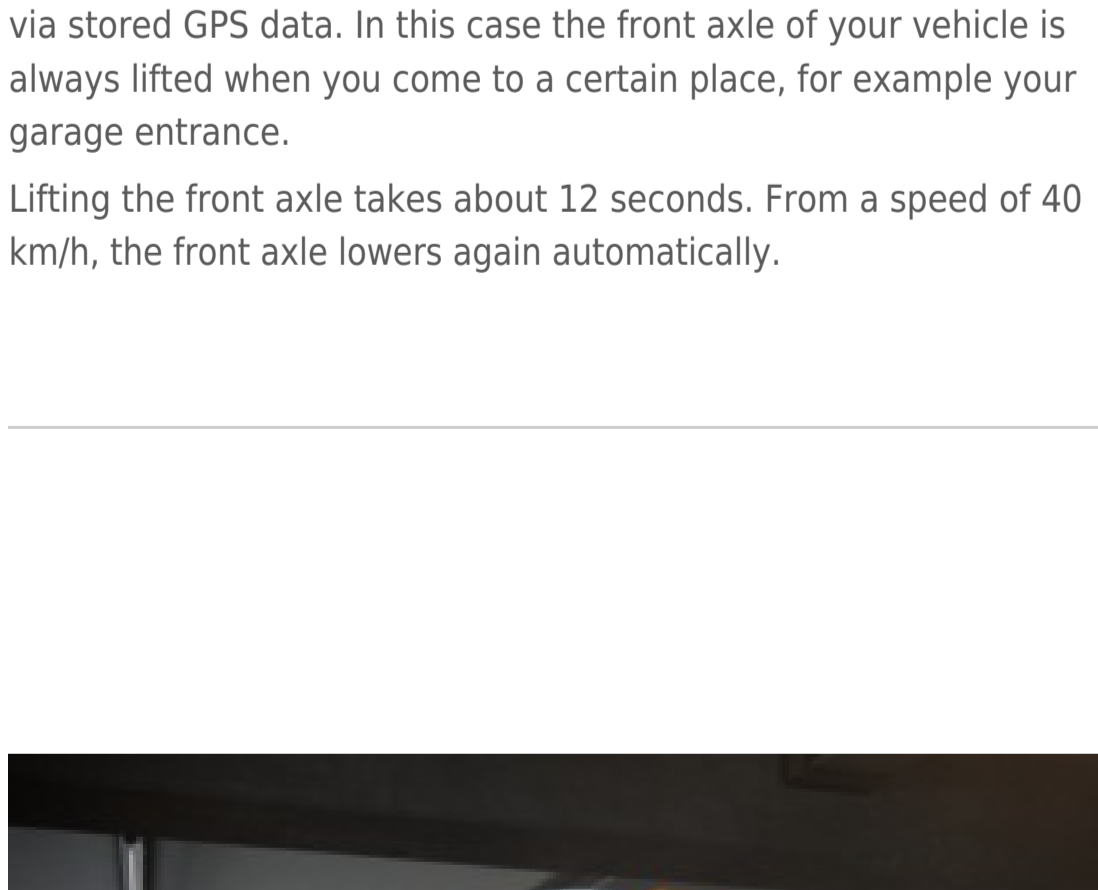
### AMG Carbon Ceramic Brake System (B07)

Optional

Reliability in extreme situations, even after full brake application several times in succession: The AMG ceramic high-performance composite brake system delivers deceleration performance that you can count on even in exceptional situations. It is also lighter than conventional brake systems - a reduction in unsprung masses for enhanced driving dynamics and agility.

The brake callipers are painted in bronze, thus clearly setting them apart from the standard brakes. They allow you to demonstrate your appreciation of exquisite design and high-performance engineering.

- Front axle: composite carbon-ceramic disc with a diameter of 402 x 39 mm, with 6-piston fixed calliper, internally ventilated and perforated
- Rear axle: composite carbon-ceramic disc with a diameter of 360 x 32 mm, with single-piston floating brake calliper, internally ventilated and perforated, with integrated parking brake
- Bronze-painted brake callipers with "AMG Carbon Ceramic" lettering

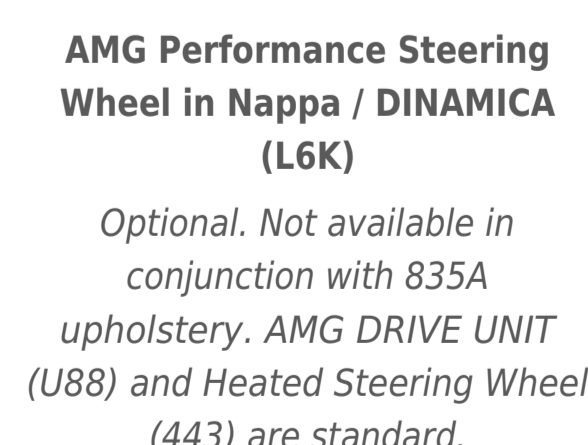


## Steering Wheel Overview



**AMG Performance Steering Wheel in Nappa Leather (L61)**

Standard. AMG DRIVE UNIT (U88) and Heated Steering Wheel (443) is also standard.



**AMG Performance Steering Wheel in Nappa / DINAMICA (L6K)**

Optional. Not available in conjunction with 835A upholstery. AMG DRIVE UNIT (U88) and Heated Steering Wheel (443) are standard.



**AMG Performance Steering Wheel in Carbon Fibre / DINAMICA (L6H)**

Optional. Not available in conjunction with 835A upholstery. AMG DRIVE UNIT (U88) and Heated Steering Wheel (443) are standard.

## Sound System Overview

### Burmester Surround Sound System (11 Speaker, 650 Watts) - Code 810

Standard

Experience more performance and exclusivity with the legendary Burmester® sound. The high-performance speakers and the AMG Premier ECS subwoofer develop a first-class surround sound with the DSP amplifier. You can optimise this specifically for the front seats. A listening experience that can also be seen thanks to the high-quality lettering.

- 3 premium tweeters in the instrument panel on the left, right and as centre speakers
- 3 premium midrange speakers in the doors and as centre speakers in the instrument panel
- 2 premium woofers in the doors
- 2 premium surround speakers in the rear side panels
- 1 AMG ECS premium subwoofer in the boot
- External 12-channel Class-D DSP amplifier, sophisticated sound optimisation (DSP: digital signal processors)
- Maximum total output: 650 watts

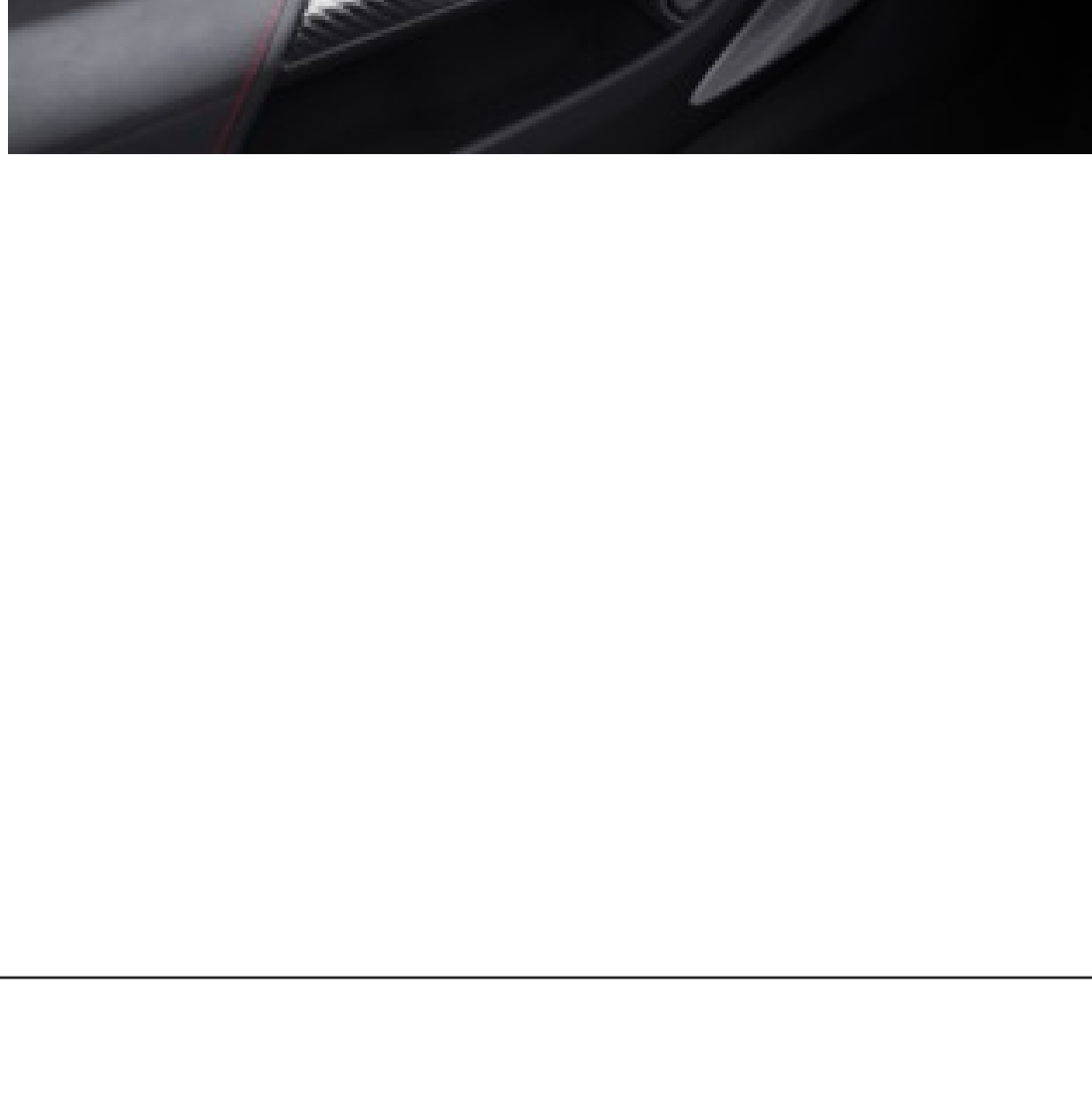


### Burmester® High-End 3D Surround Sound System (17 Speaker, 1,700 Watts) - Code 811

Optional

The sound of a luxurious home entertainment system, optimised for the interior of your Mercedes. Innovative actuator technology creates three-dimensional sound via the roof liner. With the VIP settings, you can find the perfect listening position as if you were in your own living room, and choose different sound patterns - completely according to your own taste and music style.

- 17 active, DSP-controlled amplifier channels and a total of 1220 watts system output
- Parameterised analogue filters in the amplifier for mid- and high-frequency channels
- 17 high-performance speakers with 200 mm woofers
- Active AMG ECS (Externally Coupled Subwoofer) in the boot with its own 400 watt amplifier
- 3D surround sound with AMG 3D Spider actuator technology in the roof liner
- VIP seat function for sound focusing for individual seats
- Noise compensation (VNC)
- 5 sound presets: Pure, Easy Listening, Live, Surround, 3D Surround
- Supports multichannel formats for true surround sound



# Models



## ***SL 63 (232.481)***

- MSRP: TBD
- Transmission: AMG SPEEDSHIFT MCT 9G
- Acceleration (s): 3.6
- Engine Type: AMG Handcrafted V8 Biturbo
- Horsepower (SAE @ RPM): 577 @ 5,500-6,500
- Torque (lb-ft @ RPM): 590 @ 2,500-5,000
- Launch Date: June 2022

# Standard Equipment

SL 63



## *MBC Standard Equipment*

- 201 Rear Axle Steering
- 234 Blind Spot Assist
- 249 Auto Dimming Mirrors (Rearview & Driver's Side)
- 258 Active Brake Assist
- 275 Memory Package w/Power Steering Column
- 299 PRE-SAFE
- 318 DIGITAL LIGHT Headlights
- 339 AMG Real Performance Sound
- 355 MBUX Extended Functions
- 367 Live Traffic Information
- 399 Multicontour Front Seats with Massage
- 403 AIRSCARF
- 443 Heated Steering Wheel
- 464 12.3" Instrument Cluster Display
- 470 AMG Active Ride Control
- 500 Exterior Power Folding Mirrors
- 513 Traffic Sign Assist
- 534 Connect 20 Premium
- 543 Illuminated Visor Vanity Mirrors
- 581 THERMOTRONIC Automatic Climate Control
- 628 Adaptive Highbeam Assist (AHA) PLUS
- 636 Collective Code
- 670 Residual Engine Heat Usage (Rest Function)
- 810 Burmester Surround Sound System
- 868 Widescreen Cockpit
- 874 MAGIC VISION CONTROL
- 887 Valet Trunk Locking
- 891 Premium Ambient Lighting
- 897 Wireless Phone Charging - Front
- 986 VIN On Vehicle
- 01U Navigation Services
- 14U Smartphone Integration
- 17U Google Android Auto
- 32U Sound Personalization
- 37U Advanced Connectivity Plus
- 72B Additional USB Type-C Ports
- L6J AMG Performance Steering Wheel (Nappa Leather)
- P49 Mirror Package
- P71 AMG Dynamic Plus Package
- PBG MBUX Navigation Premium
- U19 Augmented Reality for Navigation
- U45 Interchangeable Illuminated Door Sills
- 3U0 Factory Code
- 502 3 Year Navigation Map Updates
- K15 15,000 km Service Interval
- 0U3 North America Head Unit
- 1U3 Underbody Wax Protection
- 3B2 Factory Code
- 232 Integrated Garage Door Opener
- 235 Active Parking Assist
- 256 AMG Track Pace
- 264 License Plate Holder
- 293 Side Air Bags - Rear
- 309 Cup Holders
- 321 Fingerprint Scanner
- 351 eCall System
- 365 MB Navigation
- 384 Communication Module
- 401 Climate Comfort Front Seats
- 421 Automatic Transmission
- 460 Canada-Specific Equipment
- 467 AMG Electronic Limited Slip Differential
- 475 Tire Pressure Monitoring System
- 501 360 Camera
- 517 High Definition (HD) Radio
- 536 SiriusXM Satellite Radio
- 551 Anti-Theft Alarm System
- 588 AMG Light Carpet
- 634 First Aid Kit
- 666 Protective Shipping Foil
- 783 Radio Remote Control with Panic Switch
- 852 Enhanced Anti-Theft
- 871 Foot Activated Trunk/Tailgate Release
- 881 EASY-PACK Power Trunk Closer
- 889 KEYLESS-GO
- 893 KEYLESS Start
- 942 Trunk Package
- 989 VIN On Windshield
- 12B Owner's Manual & Service Booklet
- 16U Apple CarPlay
- 22U MBUX Entertainment
- 34U Extended Connectivity Plus
- 43U Headlight Projection - Animation
- 6U3 Automatic Boot Separator
- P44 Parking Package
- P64 Memory Package
- P82 GUARD 360
- U10 Weight Sensing System (WSS)
- U35 12V Power Plug In Cargo Area
- U69 Yellow Brake Calipers
- U88 AMG DRIVE UNIT
- 31U Vehicle Key Deactivation
- 0B4 Factory Code
- 1B4 Factory Code
- 2U8 A/C Refrigerant

# Paint

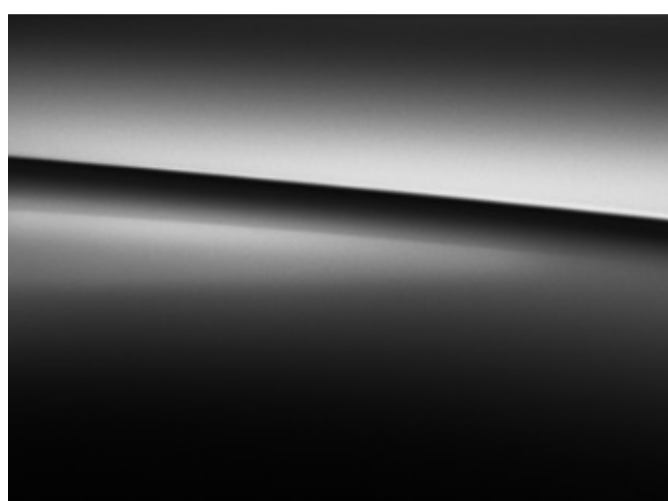
## Non-Metallic Paints



**914 - Sun Yellow**

Not available in conjunction with 747 or 751.

## Metallic Paints

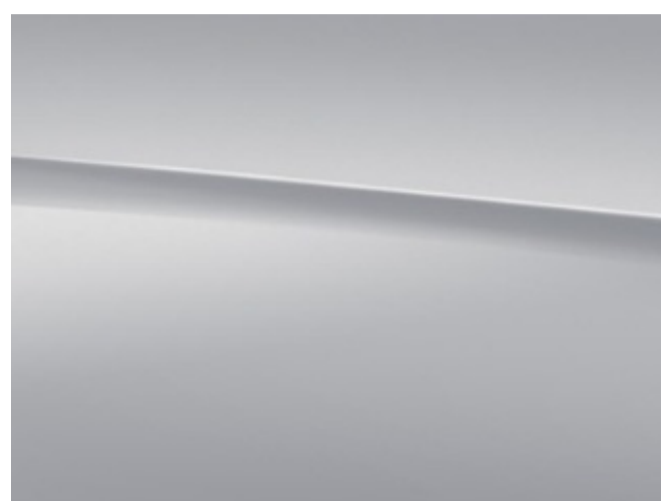


**197 - Obsidian Black Metallic**



**888 - Hyper Blue Metallic**

Not available in conjunction with 747 or 807A.



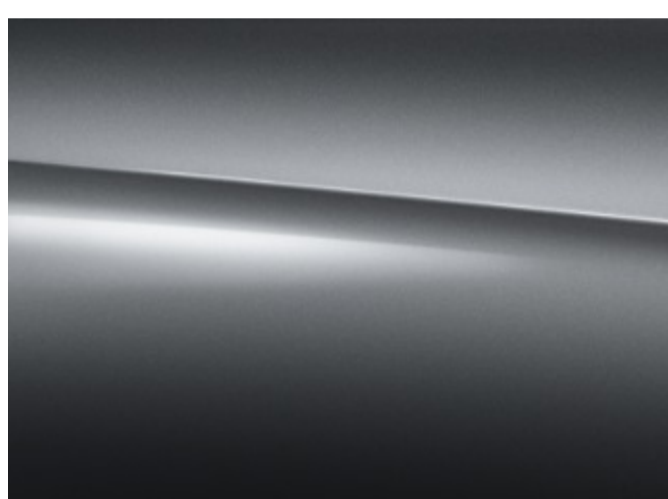
**922 - High Tech Silver Metallic**

Not available in conjunction with 751.



**970 - Spectral Blue Metallic**

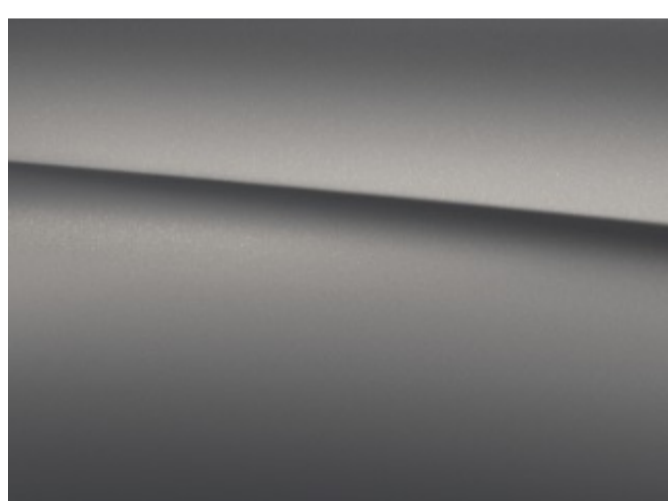
Not available in conjunction with 747 or 808A.



**992 - Selenite Grey Metallic**

Not available in conjunction with 751.

## MANUFAKTUR Paints



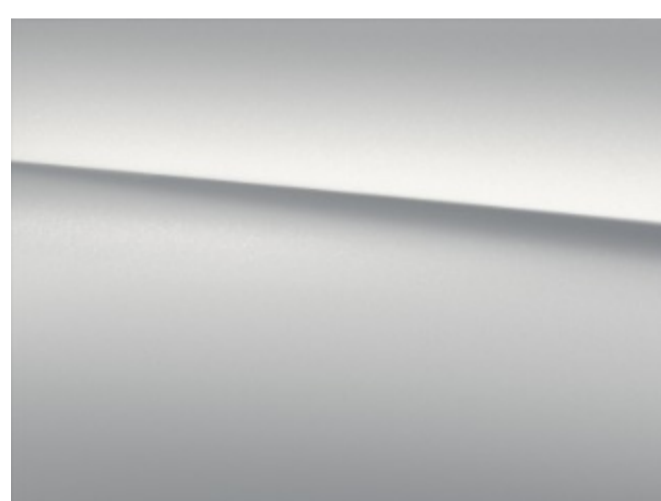
**054 - MANUFAKTUR Monza Grey MAGNO**

Not available in conjunction with 751 or 824A or 835A.

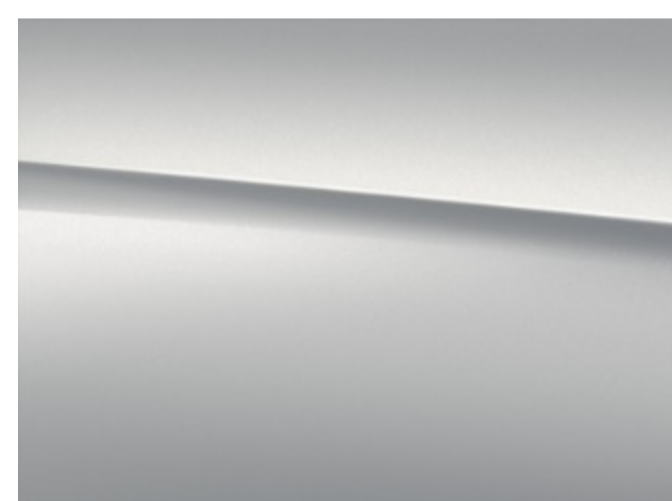


**593 - MANUFAKTUR Spectral Blue MAGNO**

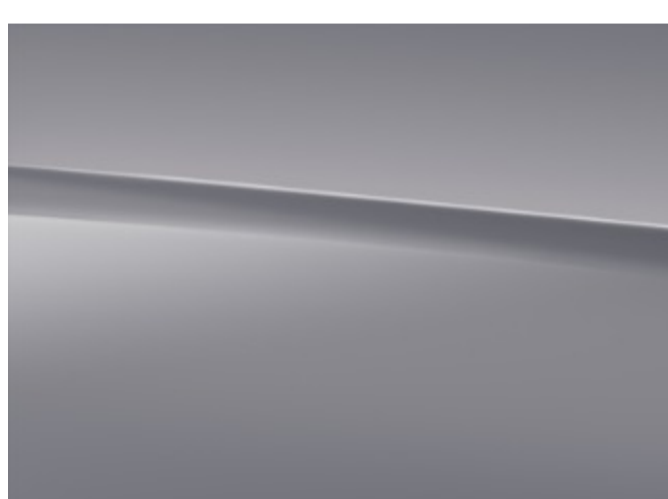
Not available in conjunction with 747 or 807A or 808A.



**659 - MANUFAKTUR Opalite White MAGNO**



**885 - MANUFAKTUR Opalite White Metallic**



**956 - MANUFAKTUR Alpine Grey**

Not available in conjunction with 747 or 751.



**993 - MANUFAKTUR Patagonia Red Metallic**

Not available in conjunction with 747 or 751 or 804A or 807A or 824A or 835A.

<i>Code</i>	<i>Description</i>	<i>Availability</i>	<i>Price</i>
914	Sun Yellow Not available in conjunction with 747 or 751.	All Models	TBD
197	Obsidian Black Metallic	All Models	TBD
888	Hyper Blue Metallic Not available in conjunction with 747 or 807A.	All Models	TBD
922	High Tech Silver Metallic Not available in conjunction with 751.	All Models	TBD
970	Spectral Blue Metallic Not available in conjunction with 747 or 808A.	All Models	TBD
992	Selenite Grey Metallic Not available in conjunction with 751.	All Models	TBD
054	MANUFAKTUR Monza Grey MAGNO Not available in conjunction with 751 or 824A or 835A.	All Models	TBD
593	MANUFAKTUR Spectral Blue MAGNO Not available in conjunction with 747 or 807A or 808A.	All Models	TBD
659	MANUFAKTUR Opalite White MAGNO	All Models	TBD
885	MANUFAKTUR Opalite White Metallic	All Models	TBD
956	MANUFAKTUR Alpine Grey Not available in conjunction with 747 or 751.	All Models	TBD
993	MANUFAKTUR Patagonia Red Metallic Not available in conjunction with 747 or 751 or 804A or 807A or 824A or 835A.	All Models	TBD

# Wheels



## RWF - 21" AMG 10-Spoke Y-Design Wheels

Standard. Equipped with Summer Performance Tires (R01).

21"

Tirefit (B51).

Front: 275/35 (9.5 x 21) / Rear: 305/30 (11.0 x 21)

## RWG - 21" AMG 10-Spoke Y-Design Wheels - Matte Black

Optional. Replaces RWF. Equipped with Summer Performance Tires (R01).

21"

Tirefit (B51).

Front: 275/35 (9.5 x 21) / Rear: 305/30 (11.0 x 21)

## RWD - 21" AMG 21" AMG Forged Cross-Spoke Wheels

Optional. Replaces RWF. Equipped with Summer Performance Tires (R01).

21"

Tirefit (B51).

Front: 275/35 (9.5 x 21) / Rear: 305/30 (11.0 x 21)

## RWE - 21" AMG 21" AMG Forged Cross-Spoke Wheels - Matte Black

Optional. Replaces RWF. Equipped with Summer Performance Tires (R01). Optionally available AMG Carbon Ceramic Brakes (B07) shown in image.

21"

Tirefit (B51).

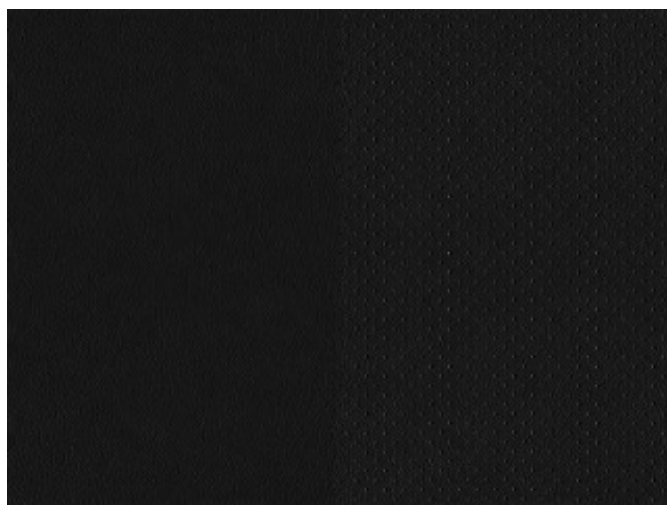
Front: 275/35 (9.5 x 21) / Rear: 305/30 (11.0 x 21)

<i>Code</i>	<i>Wheel Size</i>	<i>Description</i>	<i>Wheel Dimensions</i>	<i>Mobility</i>	<i>Availability</i>	<i>MSRP</i>
RWF	21"	Standard. Equipped with Summer Performance Tires (R01).	Front: 275/35 (9.5 x 21) / Rear: 305/30 (11.0 x 21)	Tirefit (B51).	All Models	TBD
RWG	21"	Optional. Replaces RWF. Equipped with Summer Performance Tires (R01).	Front: 275/35 (9.5 x 21) / Rear: 305/30 (11.0 x 21)	Tirefit (B51).	All Models	TBD
RWD	21"	Optional. Replaces RWF. Equipped with Summer Performance Tires (R01).	Front: 275/35 (9.5 x 21) / Rear: 305/30 (11.0 x 21)	Tirefit (B51).	All Models	TBD
RWE	21"	Optional. Replaces RWF. Equipped with Summer Performance Tires (R01). Optionally available AMG Carbon Ceramic Brakes (B07) shown in image.	Front: 275/35 (9.5 x 21) / Rear: 305/30 (11.0 x 21)	Tirefit (B51).	All Models	TBD

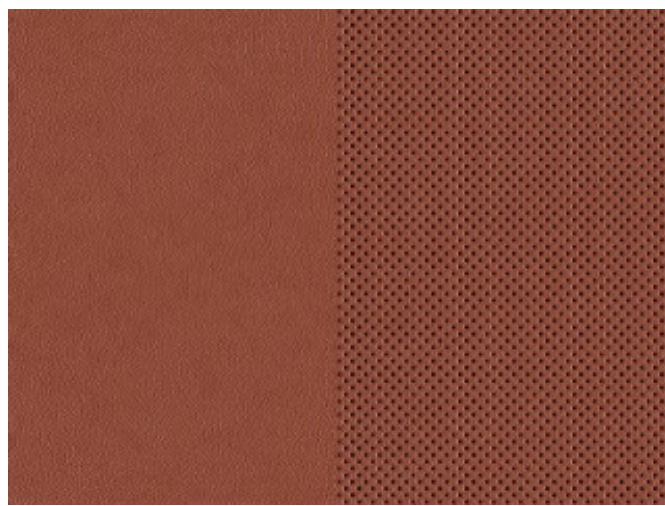


# Upholstery

## Nappa Leather

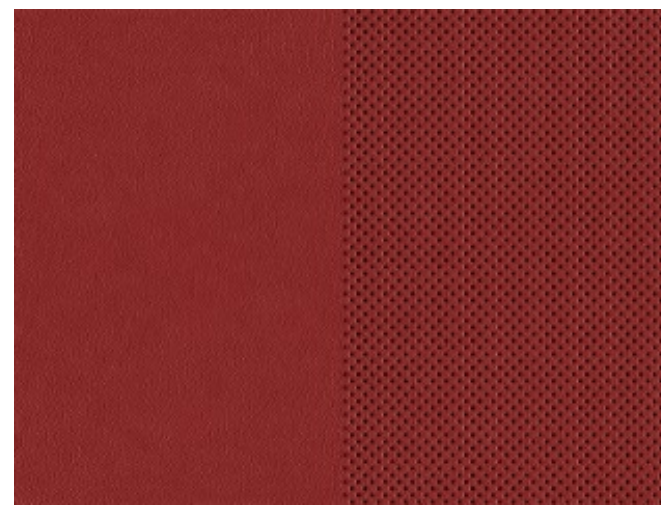


**801 - Black Nappa Leather**  
Standard. Contains 61U.



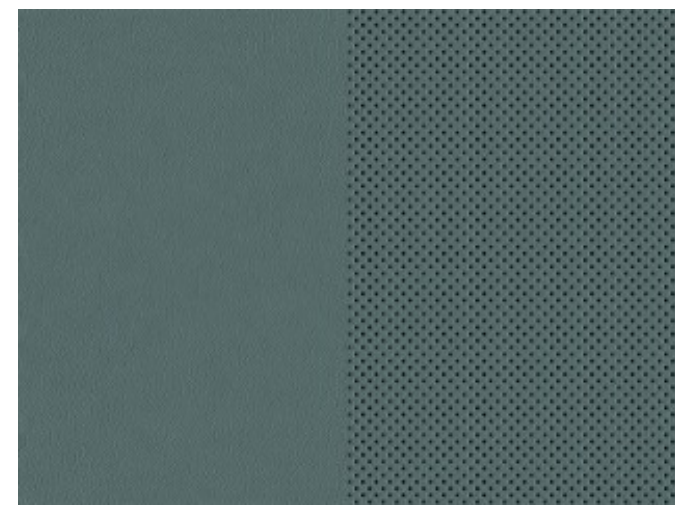
**804 - Sienna Brown / Black Nappa Leather**

Optional. Contains 61U. Not available in conjunction with 747 or 993U. Optional AMG Performance Seats (555) shown in the image.



**807 - Red Pepper / Black Nappa Leather**

Optional. Contains 61U. Not available in conjunction with 970U or 888U or 593U or 993U. Optional AMG Performance Seats (555) shown in the image.

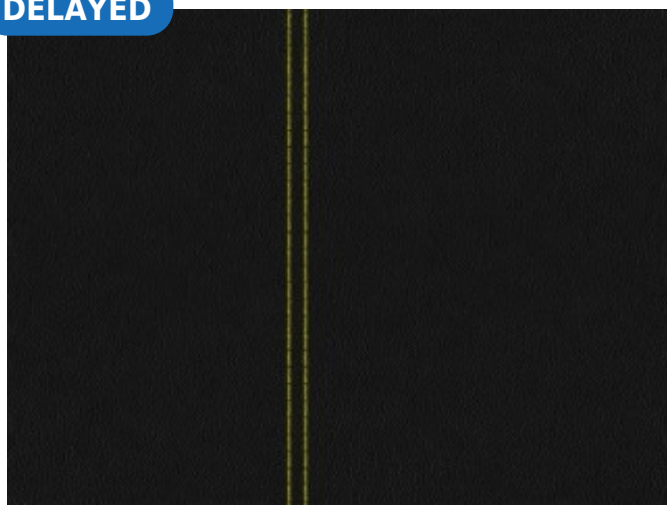


**808 - Sage Grey / Black Nappa Leather**

Optional. Contains 61U. Not available in conjunction with 970U or 593U. Optional AMG Performance Seats (555) shown in the image.

## Nappa Leather / DINAMICA

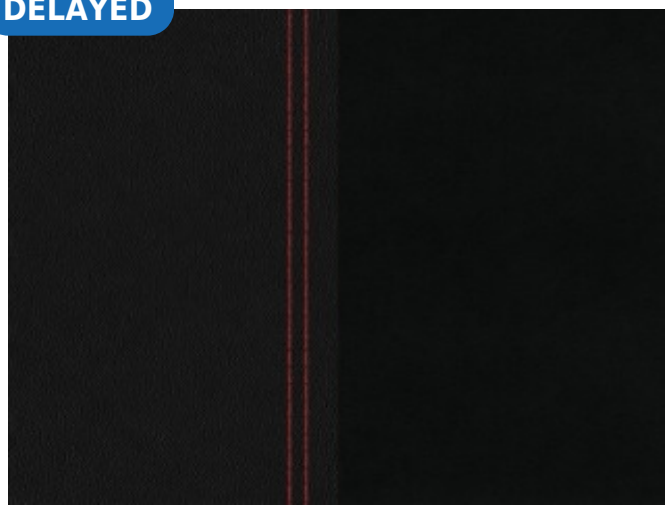
DELAYED



**701 - AMG Black Nappa Leather / DINAMICA with Yellow Stitching**

Optional. Contains 61U, U17, and 873. Requires AMG Performance Seats (555). Replaces 401 and PBR if DX1 is selected.

DELAYED

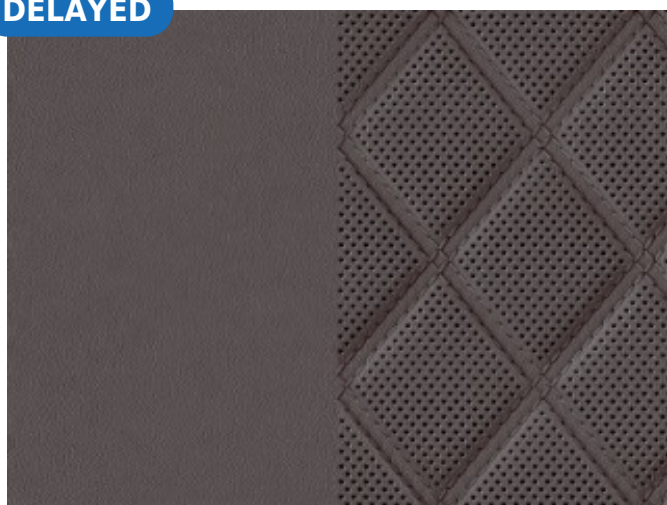


**711 - AMG Black Nappa Leather / DINAMICA with Red Stitching**

Optional. Contains 61U, U17, and 873. Requires AMG Performance Seats (555). Replaces 401 and PBR if DX1 is selected.

## MANUFAKTUR Nappa Leather

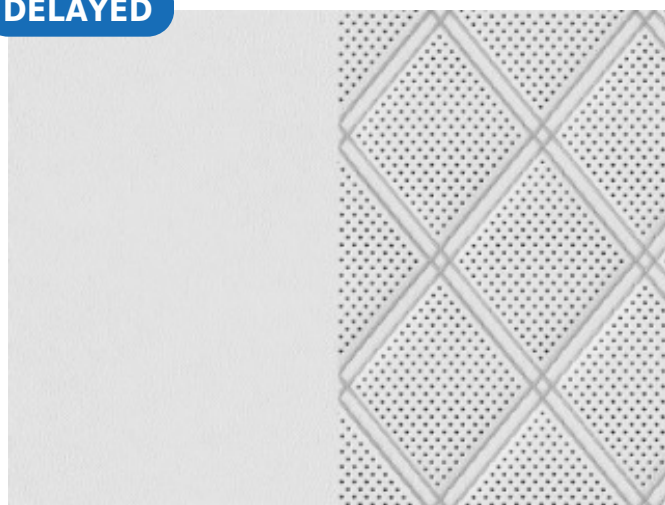
DELAYED



**824 - MANUFAKTUR Tartufo Brown / Black Nappa Leather with Diamond Stitching**

Optional. Contains 61U. Not available in conjunction with 747 or 054U or 993U. Optional AMG Performance Seats (555) shown in the image.

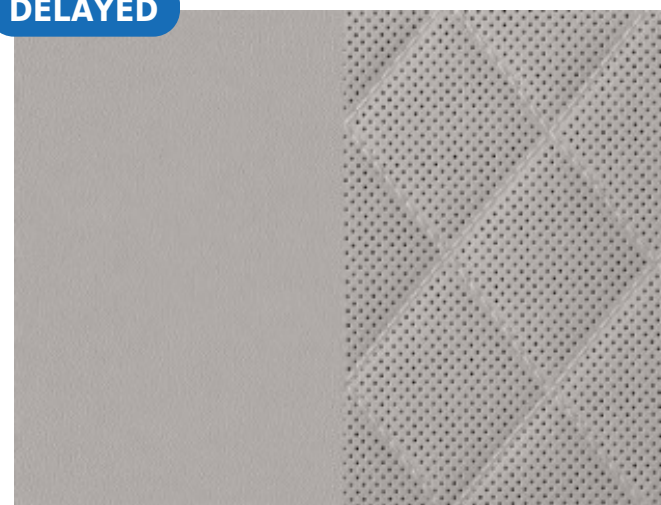
DELAYED



**825 - MANUFAKTUR Crystal White / Black Nappa Leather with Diamond Stitching**

Optional. Contains 61U and Y03.

DELAYED



**835 - MANUFAKTUR Macchiato Beige / Titanium Grey Nappa Leather with Diamond Stitching**

Optional. Contains 65U or Y02. Not available in conjunction with 747 or 054U or 993U.

## Soft Top



**740 - Black Soft Top**  
Standard



**747 - Red Soft Top**

Optional. Replaces 740. Not orderable in conjunction with 888U or 914U or 970U or 593U or 956U or 993U or 804A or 824A or 835A or 65U.



**751 - Grey Soft Top**

Optional. Replaces 740. Not orderable in conjunction with 914U or 922U or 992U or 054U or 956U or 993U.

<i>Code</i>	<i>Description</i>	<i>Availability</i>	<i>Price</i>
801	Black Nappa Leather Standard. Contains 61U.	All Models	TBD
804	Sienna Brown / Black Nappa Leather Optional. Contains 61U. Not available in conjunction with 747 or 993U. Optional AMG Performance Seats (555) shown in the image.	All Models	TBD
807	Red Pepper / Black Nappa Leather Optional. Contains 61U. Not available in conjunction with 970U or 888U or 593U or 993U. Optional AMG Performance Seats (555) shown in the image.	All Models	TBD
808	Sage Grey / Black Nappa Leather Optional. Contains 61U. Not available in conjunction with 970U or 593U. Optional AMG Performance Seats (555) shown in the image.	All Models	TBD
701 (Delayed)	AMG Black Nappa Leather / DINAMICA with Yellow Stitching Optional. Contains 61U, U17, and 873. Requires AMG Performance Seats (555). Replaces 401 and PBR if DX1 is selected.	All Models	TBD
711 (Delayed)	AMG Black Nappa Leather / DINAMICA with Red Stitching Optional. Contains 61U, U17, and 873. Requires AMG Performance Seats (555). Replaces 401 and PBR if DX1 is selected.	All Models	TBD
824 (Delayed)	MANUFAKTUR Tartufo Brown / Black Nappa Leather with Diamond Stitching Optional. Contains 61U. Not available in conjunction with 747 or 054U or 993U. Optional AMG Performance Seats (555) shown in the image.	All Models	TBD
825 (Delayed)	MANUFAKTUR Crystal White / Black Nappa Leather with Diamond Stitching Optional. Contains 61U and Y03.	All Models	TBD
835 (Delayed)	MANUFAKTUR Macchiato Beige / Titanium Grey Nappa Leather with Diamond Stitching Optional. Contains 65U or Y02. Not available in conjunction with 747 or 054U or 993U.	All Models	TBD
740	Black Soft Top Standard	All Models	\$0
747	Red Soft Top Optional. Replaces 740. Not orderable in conjunction with 888U or 914U or 970U or 593U or 956U or 993U or 804A or 824A or 835A or 65U.	All Models	\$0
751	Grey Soft Top Optional. Replaces 740. Not orderable in conjunction with 914U or 922U or 992U or 054U or 956U or 993U.	All Models	\$0

<i>Code</i>	<i>Upholstery</i>	<i>Seats</i>	<i>Floor Mats</i>	<i>Upper Dash/Lower Dash</i>	<i>Seat Belts</i>	<i>Steering Wheel</i>	<i>Headliner</i>
801	Black Nappa Leather Standard. Contains 61U.	Black	Black	Black	Black	Black	MANUFAKTUR Black DINAMICA Headliner (61U) is standard. Optionally available with MANUFAKTUR Neva Grey DINAMICA Headliner (69U).
804	Sienna Brown / Black Nappa Leather Optional. Contains 61U. Not available in conjunction with 747 or 993U. Optional AMG Performance Seats (555) shown in the image.	Sienna Brown	Black	Black / Sienna Brown	Black	Black	MANUFAKTUR Black DINAMICA Headliner (61U) is standard. Optionally available with MANUFAKTUR Neva Grey DINAMICA Headliner (69U).
807	Red Pepper / Black Nappa Leather Optional. Contains 61U. Not available in conjunction with 970U or 888U or 593U or 993U. Optional AMG Performance Seats (555) shown in the image.	Red Pepper	Black	Black / Red Pepper	Black	Black	MANUFAKTUR Black DINAMICA Headliner (61U) is standard. Optionally available with MANUFAKTUR Neva Grey DINAMICA Headliner (69U).
808	Sage Grey / Black Nappa Leather Optional. Contains 61U. Not available in conjunction with 970U or 593U. Optional AMG Performance Seats (555) shown in the image.	Sage Grey	Black	Black / Sage Grey	Black	Black	MANUFAKTUR Black DINAMICA Headliner (61U) is standard. Optionally available with MANUFAKTUR Neva Grey DINAMICA Headliner (69U).
701 (Delayed)	AMG Black Nappa Leather / DINAMICA with Yellow Stitching Optional. Contains 61U, U17, and 873. Requires AMG Performance Seats (555). Replaces 401 and PBR if DX1 is selected.	Black	Black	Black	Black is standard. Yellow Seatbelts (Y06) are optionally available.	Black	MANUFAKTUR Black DINAMICA Headliner (61U).
711 (Delayed)	AMG Black Nappa Leather / DINAMICA with Red Stitching Optional. Contains 61U, U17, and 873. Requires AMG Performance Seats (555). Replaces 401 and PBR if DX1 is selected.	Black	Black	Black	Black is standard. Red Seatbelts (Y05) are optionally available.	Black	MANUFAKTUR Black DINAMICA Headliner (61U).
824 (Delayed)	MANUFAKTUR Tartufo Brown / Black Nappa Leather with Diamond Stitching Optional. Contains 61U. Not available in conjunction with 747 or 054U or 993U. Optional AMG Performance Seats (555) shown in the image.	Tartufo Brown	Black	Black / Tartufo Brown	Black	Black	MANUFAKTUR Black DINAMICA Headliner (61U) is standard. Optionally available with MANUFAKTUR Macchiato Beige DINAMICA Headliner (65U).
825 (Delayed)	MANUFAKTUR Crystal White / Black Nappa Leather with Diamond Stitching Optional. Contains 61U and Y03.	Crystal White	Black	Black / Crystal White	Neva Grey	Black	MANUFAKTUR Black DINAMICA Headliner (61U) is standard. Optionally available with MANUFAKTUR Neva Grey DINAMICA Headliner (69U).
835 (Delayed)	MANUFAKTUR Macchiato Beige / Titanium Grey Nappa Leather with Diamond Stitching Optional. Contains 65U or Y02. Not available in conjunction with 747 or 054U or 993U.	Macchiato Beige	Macchiato Beige	Titanium Grey / Macchiato Beige	Macchiato Beige	Macchiato Beige	MANUFAKTUR Macchiato Beige DINAMICA Headliner (65U)
740	Black Soft Top Standard						
747	Red Soft Top Optional. Replaces 740. Not orderable in conjunction with 888U or 914U or 970U or 593U or 956U or 993U or 804A or 824A or 835A or 65U.						
751	Grey Soft Top Optional. Replaces 740. Not orderable in conjunction with 914U or 922U or 992U or 054U or 956U or 993U.						

# Trims



**H70 - AMG Silver Shadow Trim**

Optional. Replaces H80.



**H73 - AMG Carbon Fibre Trim**

Optional. Replaces H80.



**H80 - AMG Black Piano Lacquer Trim**

Standard



**H94 - AMG Dark Shadow Trim**

Optional. Replaces H80.

<i>Code</i>	<i>Description</i>	<i>Availability</i>	<i>Price</i>
H70	AMG Silver Shadow Trim Optional. Replaces H80.	All Models	TBD
H73	AMG Carbon Fibre Trim Optional. Replaces H80.	All Models	TBD
H80	AMG Black Piano Lacquer Trim Standard	All Models	TBD
H94	AMG Dark Shadow Trim Optional. Replaces H80.	All Models	TBD

# Packages

<i>Code</i>	<i>Packages</i>	<i>Availability</i>	<i>MSRP</i>
DX1	<p>Exclusive Package</p> <ul style="list-style-type: none"> <li>▪ 438 - Head Up Display</li> <li>▪ 77B - MBUX Interior Assist</li> <li>▪ PBR - ENERGIZING Comfort</li> </ul>	All Models	TBD
DG1	<p>AMG Stealth Package</p> <p>Requires (P60 or 773) and (RWG or RWE). Not orderable in conjunction with 750.</p> <ul style="list-style-type: none"> <li>▪ 7U8 - High Gloss Black Vehicle Badging</li> <li>▪ PAZ - AMG Night Package II</li> <li>▪ 5U7 - Darkened Headlamps and Tail Lights</li> <li>▪ 5U6 - Darkened AMG Front Grille</li> </ul>	All Models	TBD
DL1	<p>Intelligent Drive Package</p> <ul style="list-style-type: none"> <li>▪ 266 - Active Steering Assist</li> <li>▪ K32 - Active Lane Change Assist</li> <li>▪ K33 - Enhanced Stop &amp; Go</li> <li>▪ 546 - Active Speed Limit Assist</li> <li>▪ K34 - Route-Based Speed Adaptation</li> <li>▪ 233 - Active Distance Assist DISTRONIC. Replaces 258.</li> <li>▪ P20 - Driving Assistance Package. Replaces 234.</li> <li>▪ Active Blind Spot Assist</li> <li>▪ 243 - Active Lane Keeping Assist</li> <li>▪ 272 - Factory Code</li> <li>▪ PRE-SAFE PLUS</li> <li>▪ 262 - Factory Code</li> </ul>	All Models	TBD

# Options

## Optional Equipment

<i>Code</i>	<i>Options</i>	<i>Availability</i>	<i>MSRP</i>
B26	AMG Aerodynamics Package Not orderable in conjunction with 773 or 750.	All Models	TBD
P60	AMG Night Package Not orderable in conjunction with 773 or 750.	All Models	TBD
773	AMG Exterior Carbon Fibre Package Contains Carbon Fibre Exterior Mirror Caps (B28). Not orderable in conjunction with P60, B26, or 750.	All Models	TBD
750	AMG High Gloss Chrome Package Not orderable in conjunction with P60, B26, or 773.	All Models	TBD
555 (Delayed)	AMG Performance Seat Contains Multicontour Front Seats without Massage (409). Replaces 399 and PBR if DX1 is ordered.	All Models	TBD
811	Burmester High-End 3D Surround Sound System Replaces 810.	All Models	TBD
479	Front Axle Lift System	All Models	TBD
C52	AMG Indoor Car Cover	All Models	TBD
21U	Dash Cam (Forward Facing)	All Models	TBD
B07	AMG Carbon Ceramic Brake System Replaces U69.	All Models	TBD
L6K	AMG Performance Steering Wheel (Nappa/DINAMICA) Replaces L6J. Not orderable in conjunction with 835A.	All Models	TBD
L6H (Delayed)	AMG Performance Steering Wheel (Carbon Fibre/DINAMICA) Replaces L6J. Not orderable in conjunction with 835A.	All Models	TBD
Y05	Red Seatbelts Replaces U17. Only orderable in conjunction with 711A.	All Models	TBD
Y06	Yellow Seatbelts Replaces U17. Only orderable in conjunction with 701A.	All Models	TBD



# Specifications

SL 63



## Dimensions

Length (mm)	4,705
Width - Mirrors Folded (mm)	TBD
Width - Mirrors Extended (mm)	1,915
Height (mm)	1,353
Wheelbase (mm)	2,700
Turning Circle (m)	12.84
Headroom (mm)	TBD
Luggage Capacity (L)	213-240
Fuel Capacity (L)	70

## Weight

Curb Weight (kg)	TBD
Maximum Gross Vehicle Weight (kg)	TBD
Maximum Payload (kg)	TBD
Maximum Roof Load (kg)	N/A

## Engine

Engine Type	AMG Handcrafted V8 Biturbo
Displacement (cm3)	3,982
Bore (mm)	TBD
Stroke (mm)	TBD
Horsepower (SAE @ RPM)	577 @ 5,500-6,500
Torque (lb-ft @ RPM)	590 @ 2,500-5,000
Compression Ratio	8:6
Fuel Type	Premium Unleaded
Battery Capacity (Amp Hours)	TBD

## Drivetrain

Drive Configuration	AMG 4MATIC+ All-Wheel Drive
Transmission	AMG SPEEDSHIFT MCT 9G

## Body/Suspension

Steering	Electromechanical Rack & Pinion
Braking System	ABS with Brake Assist
Front Brake Type / Diameter (mm)	Perforated Disc / 390
Rear Brake Type / Diameter (mm)	Perforated Disc / 360
Brake Disc Ventilation	Front and Rear
Front Suspension	AMG ACTIVE RIDE CONTROL
Rear Suspension	AMG ACTIVE RIDE CONTROL
Drag Coefficient	TBD

## Performance

Top Speed (Electronically Limited - km/h)	315
Acceleration (s)	3.6

## Fuel economy

City fuel economy	TBD
Highway fuel economy	TBD

# Options In Detail



# Gallery