

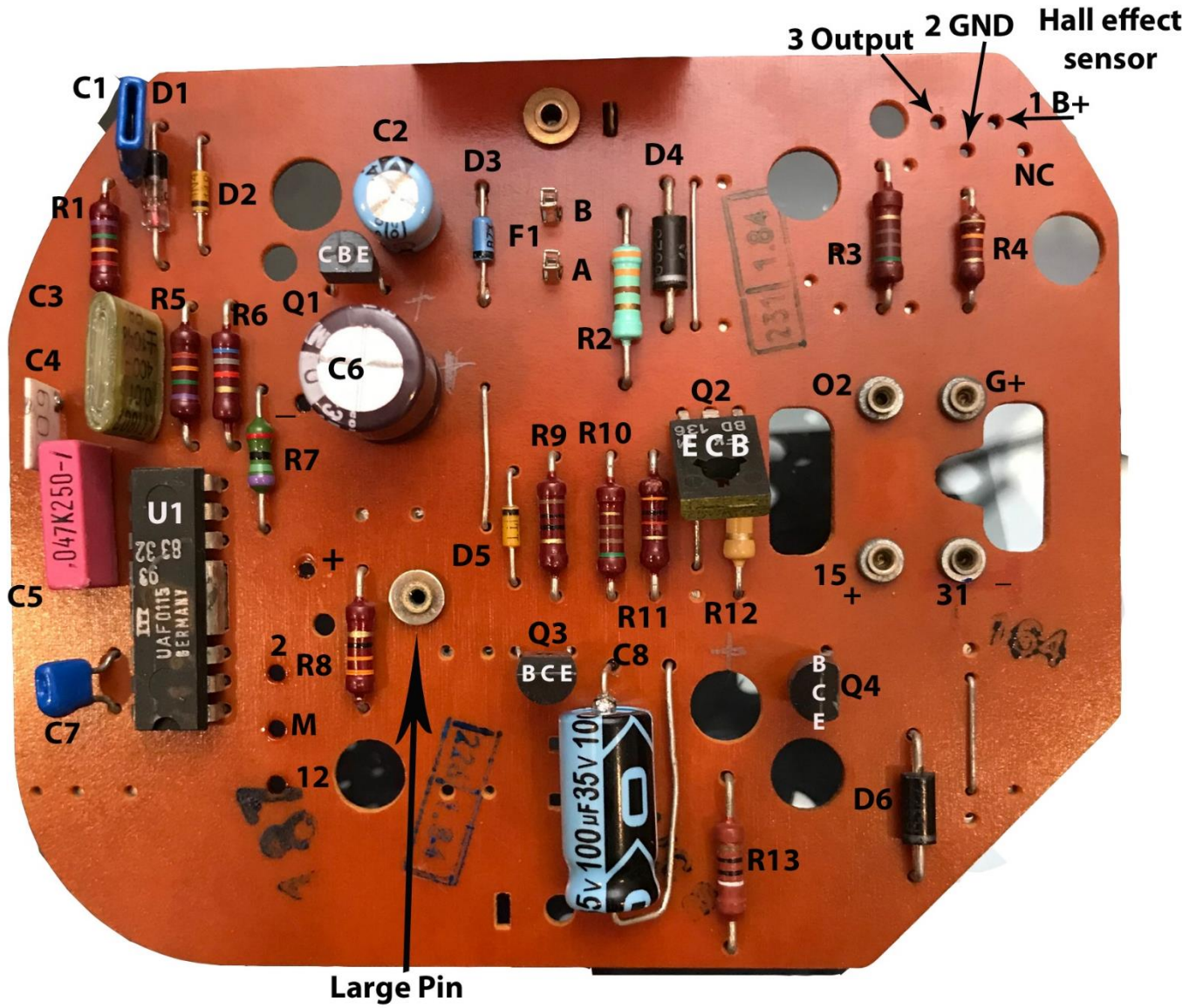
Speedometer details

1984 280SL

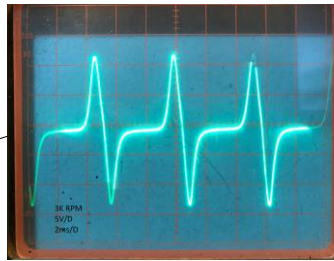
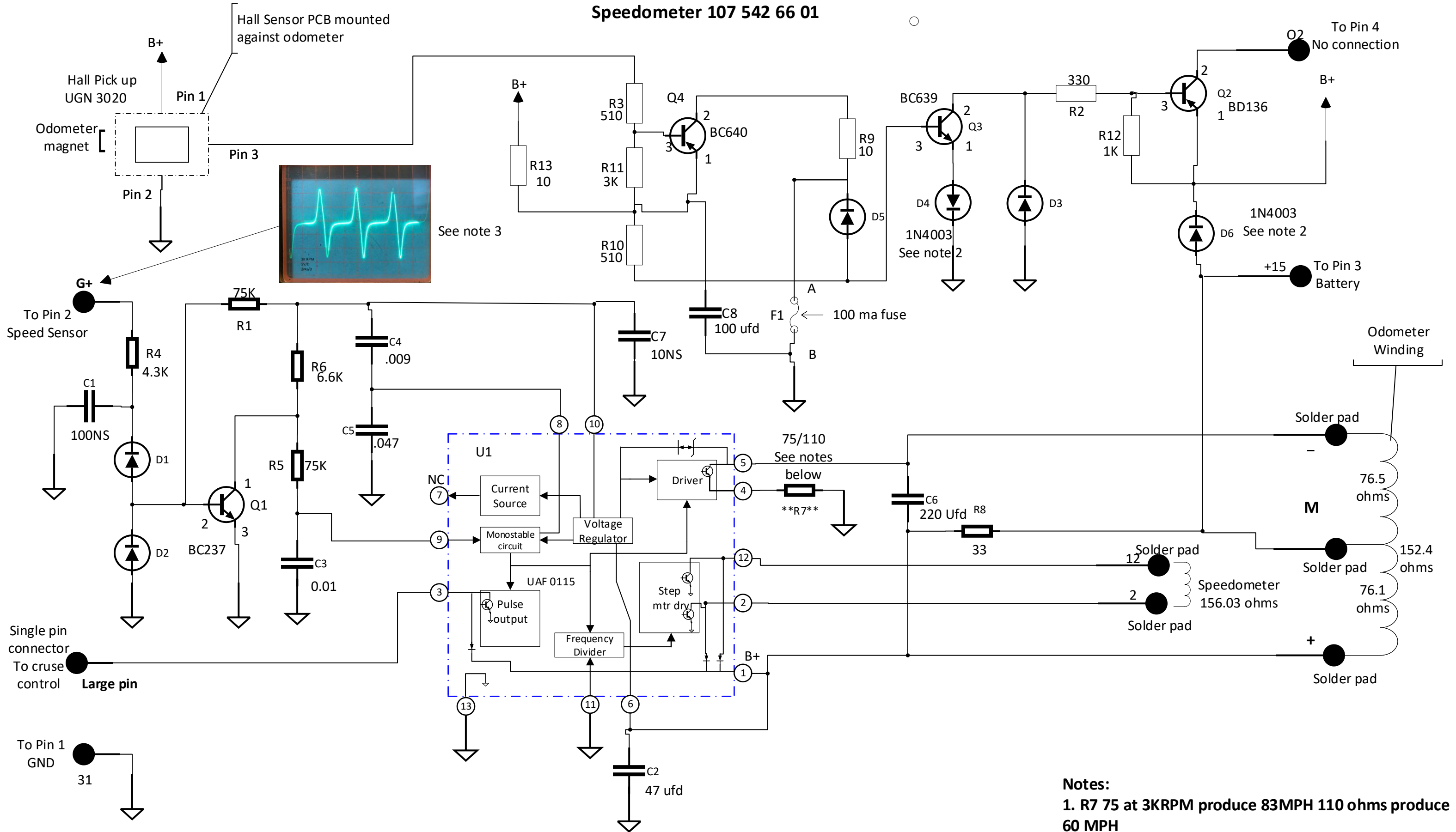


1984 280SL
Nando O'Farrell
3/28/20 Rev a

Board Layout



Speedometer 107 542 66 01

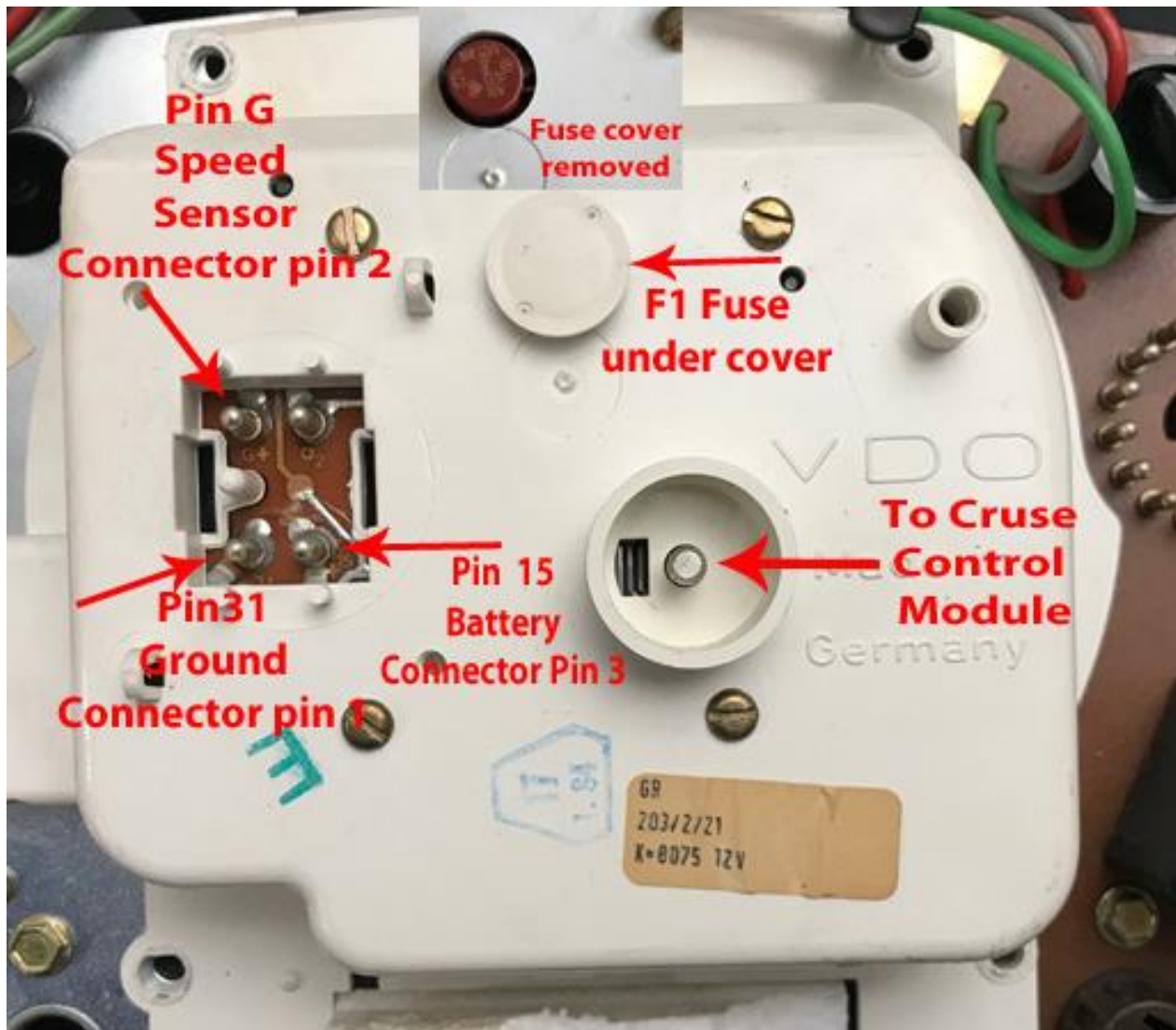


- Notes:**
- 1. R7 75 at 3KRPM produce 83MPH 110 ohms produce 60 MPH
 - 2. Unable to read diode. As per manufacture
 - 3. Unloaded sensor waveform at 3K RPM 5v/D 2ms/D

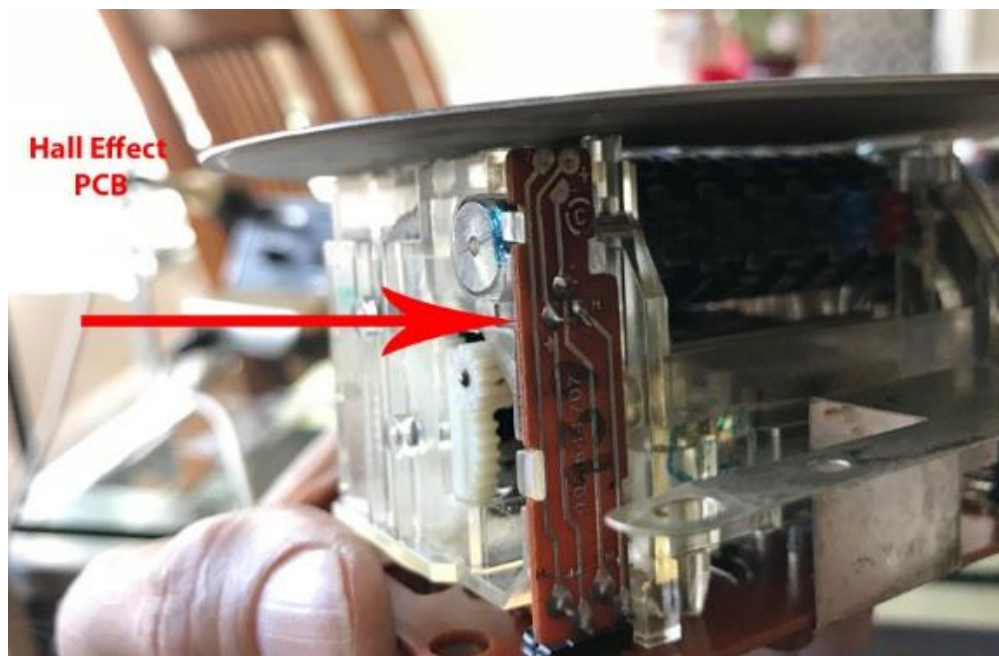
All resistors are quarter watt
 PC board part number 992 644 670 Hall Sensor PCB part number 992 644 707

Nando
 Rev. I 3/2/20

Speedometer pin-out



Hall Effect Layout

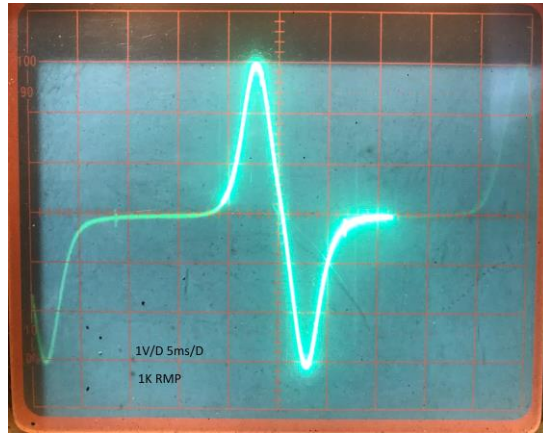


Bill of Material

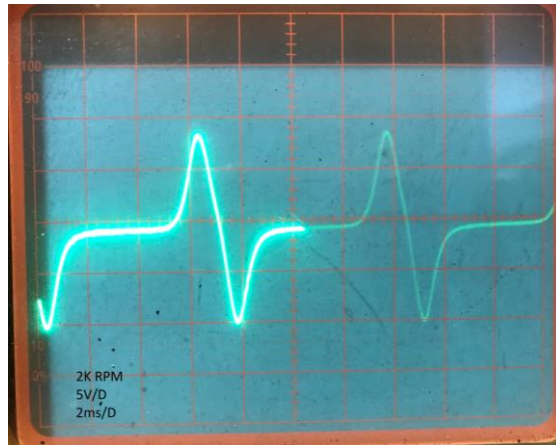
1. Top assembly? 107 542 66 01 Number on face of speedo
2. Rear white cover 81 117 291
3. Main PCB 992 644 670
4. Hall sensor PCB 992 644 707
5. R1 75 K
6. R2 330
7. R3 510
8. R4 4.3K
9. R5 75K
10. R6 6.8K
11. R7 75 ohms at 3K-RPM produce 83 MPH 110 ohms produce 60 MPH
12. R8 33
13. R9 10
14. R10 510
15. R11 3K
16. R12 1K
17. R13 10
18. C1 100 NS
19. C2 47 uf @ 35V
20. C3 .01 (KT 1807)
21. C4 009?
22. C5 .047 @250V
23. C6 220 uf@35V
24. C7 10 NS
25. C8 100 uf @35V
26. U1 UAF0115IC chip
27. Q1 BC 237
28. Q2 BD 136
29. Q3 BC 639
30. Q4 BC 640
31. F1 100ma fuse MFR part #37001000410
32. UGN-3020
33. No Diode information. Unable to read.

Speedometer input waveform (Unloaded)

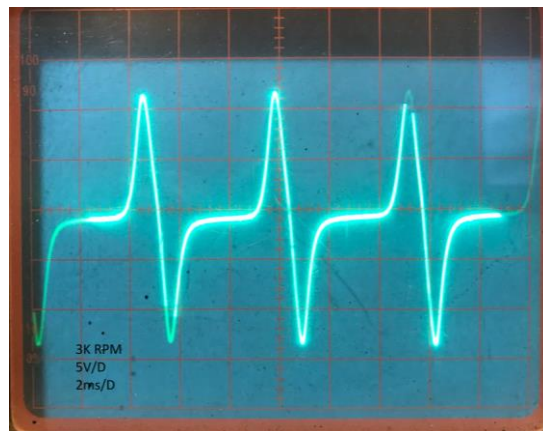
1 v 5ms/ div@1K RPM



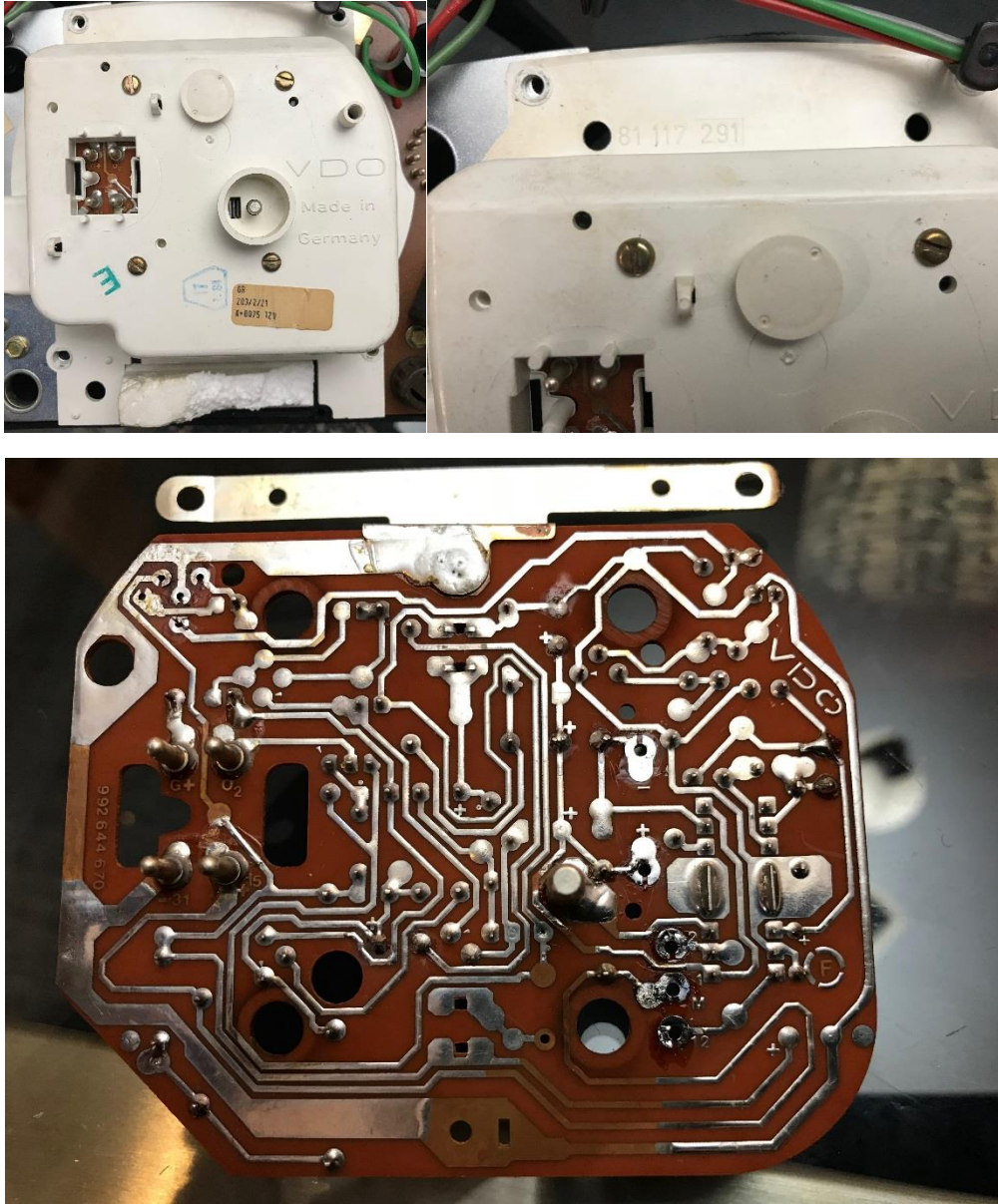
5 v 2ms/ div @ 2K RPM



5 v 2ms/ div @ 3K RPM

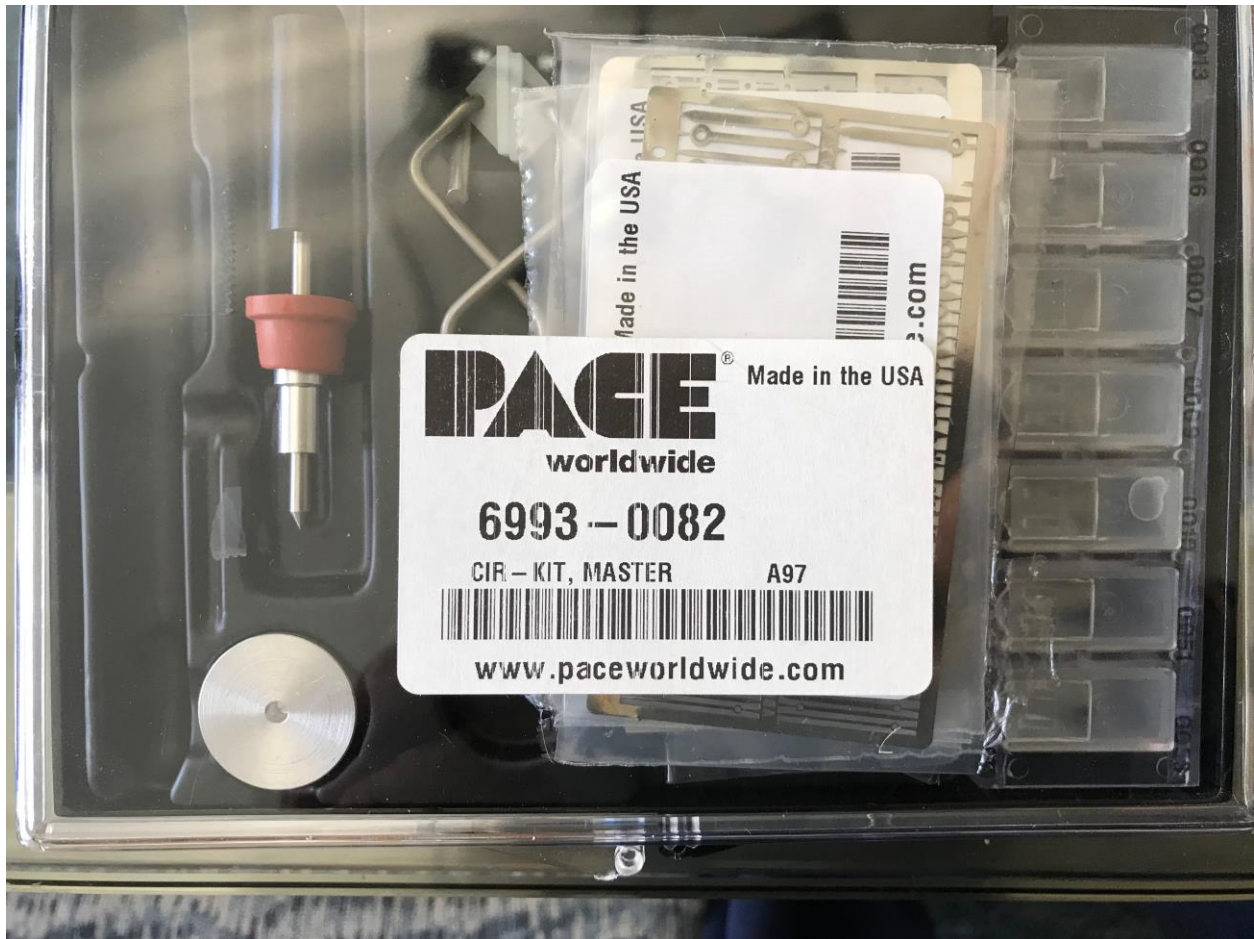


Miscellaneous



1984 280SL
Nando O'Farrell
3/28/20 Rev a

This kit is a must. This will repair most defective traces



1984 280SL
Nando O'Farrell
3/28/20 Rev a