

**Document number :** pe46.10-p-2101-97kb

**Document title :** Wiring diagram for steering column module control unit

**Code: Designation: Coordinates:**

A45	Fanfare horns and airbag clock spring contact	41C
A45x1	Clock spring contact and airbag connector	59K
A45x2	Clock spring contact and multifunction steering wheel connector	52E
A74	Steering wheel heater electronics	47L
F33	Rear prefuse	3L
F33f3	Fuse 3	1K
K40/4	Fuse and relay module (front passenger)	28L
K40/4	Fuse and relay module (front passenger)	33L
K40/4f39	Fuse 39	27L
K40/4f39	Fuse 39	32L
N15/5	Electronic selector lever module control module	16L
N2/7	Restraint systems control module	12L
N49	Steering angle sensor	68C
N80	Steering column module	4A
N80	Steering column module	12A
N80	Steering column module	20A
N80	Steering column module	28A
N80	Steering column module	36A
N80	Steering column module	68A
N80	Steering column module	44A
N80	Steering column module	52A
N80	Steering column module	76A
N80	Steering column module	61A
N99	DC/DC converter control module	23L
R12/13	Driver airbag ignition squib 1	60L
R12/14	Driver airbag ignition squib 2	61L
R22/4	Steering wheel heater	44L
R22/4b1	Heater coil temperature sensor	45L
R22/4r1	Heater coil	44L
S110	Left multifunction steering wheel pushbutton group	58L
S110	Left multifunction steering wheel pushbutton group	55L
S110/1	Steering wheel gear shifter MINUS	38L
S110/2	Left steering wheel gear shifter	40L
S110s1	Scroll forward/back pushbutton	55L
S110s3	System selection pushbutton	56L
S110s5	Fanfare horns pushbutton	58L
S111	Right multifunction steering wheel pushbutton group	52L
S111	Right multifunction steering wheel pushbutton group	49L
S111/1	Steering wheel gear shifter PLUS	37L

**Document number :** pe46.10-p-2101-97kb

**Document title :** Wiring diagram for steering column module control unit

**Code: Designation: Coordinates:**

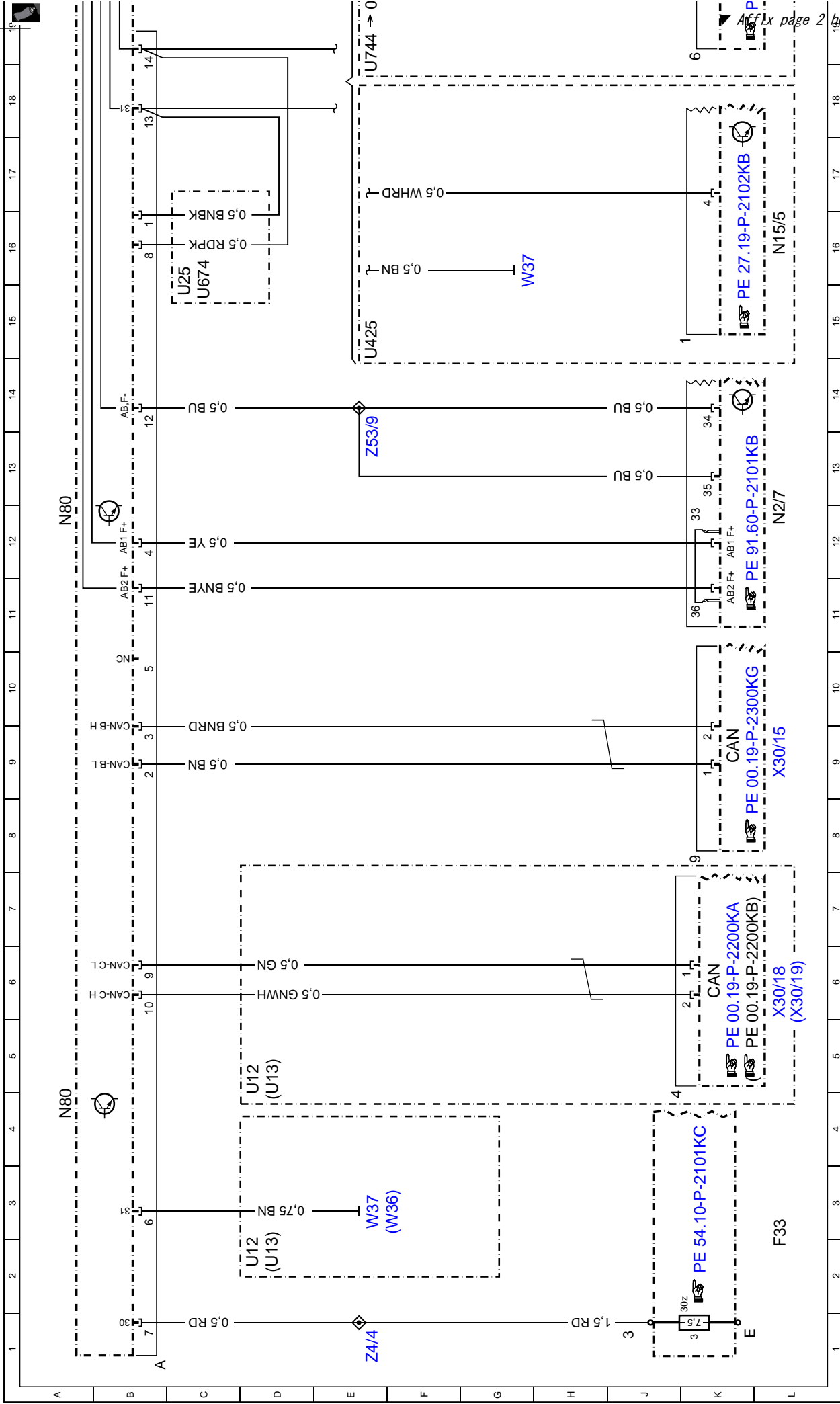
S111/2	Right steering wheel gear shifter	41L
S111s1	Pushbutton + and -, setting of specific functions and volume control	51L
S111s3	Accept/terminate phone call pushbutton	53L
S111s5	Fanfare horns pushbutton	50L
S4	Combination switch	63C
S40	CC switch	76C
S40/4	CC switch	72C
S40/4s1	Resume from memory	71C
S40/4s2	Decelerate and set	71C
S40/4s3	Accelerate and set	71C
S40/4s4	Off	73C
S40/4s5	Control contact	73C
S40/4s6	Variable speed	73C
S40/4v1	Yellow LED, variable speed limiter	72C
S40s1	Resume from memory	75C
S40s2	Decelerate and set	75C
S40s3	Accelerate and set	76C
S40s4	Off	76C
S40s5	Control contact	77C
S4s1	Left and right turn signal switch	62C
S4s2	Headlamp flasher/high beam switch	62C
S4s3	Low beam switch	63C
S4s4	Windshield washer system switch	63C
S4s5	Wipe switch	64C
S59/1	Steering column adjustment/steering wheel heater switch	65C
S59/1s1	Steering column adjustment raise/lower, forward/back switch	64C
S59/1s2	Steering wheel heater switch	66C
S93/2	VCS [SBS] switch	74C
S93/2	VCS [SBS] switch	77C
U1	Valid for {{USA}}	75A
U12	Valid for left-hand steering	24G
U12	Valid for left-hand steering	2D
U127	Valid for engine 272, engine 273 KE	2D
U13	Valid for right-hand steering	24G
U13	Valid for right-hand steering	2D
U19	Valid for M12.973, M113.963	25E
U2	Valid for all except {{USA}}	70A
U25	Valid for automatic transmission	15C
U25	Valid for automatic transmission	39E

**Document number :** pe46.10-p-2101-97kb

**Document title:** Wiring diagram for steering column module control unit

**Code:** **Designation:** **Coordinates:**

U425	Valid for SL 55 AMG	14E
U425	Valid for SL 55 AMG	25F
U425	Valid for SL 55 AMG	35E
U428	Valid for SL 65 AMG and SL 600	30E
U674	Valid for automated manual transmission (SEQ) [ASG]	15G
U674	Valid for automated manual transmission (SEQ) [ASG]	39F
U744	Valid for steering wheel heater	18E
U744	Valid for steering wheel heater	43E
U744	Valid for steering wheel heater	66A
W36	Ground (right footwell)	24G
W36	Ground (right footwell)	3F
W37	Ground (left footwell)	16H
W37	Ground (left footwell)	24H
W37	Ground (left footwell)	3E
X30/15	Driver CAN B voltage distributor connector	9L
X30/15	Driver CAN B voltage distributor connector	20L
X30/18	Left voltage distributor connector (CAN C)	6L
Z4/4	Circuit 30Z connector sleeve (solder connector in harness)	1E
Z53/9	Interior connector sleeve (airbag)	13E



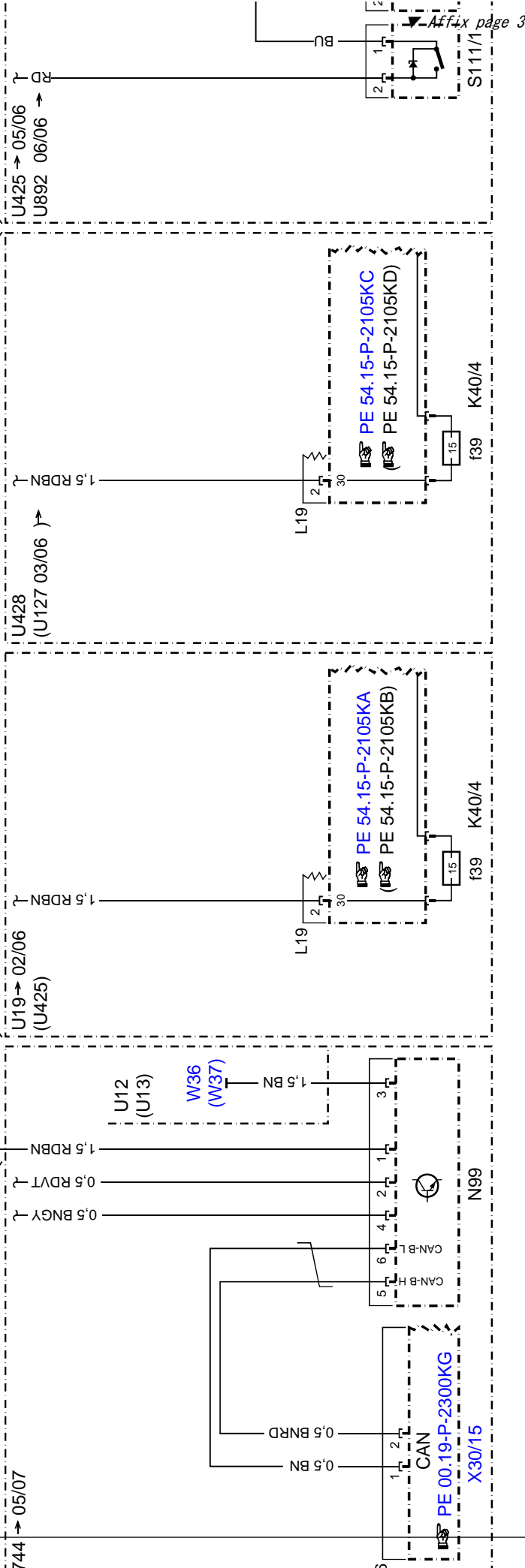
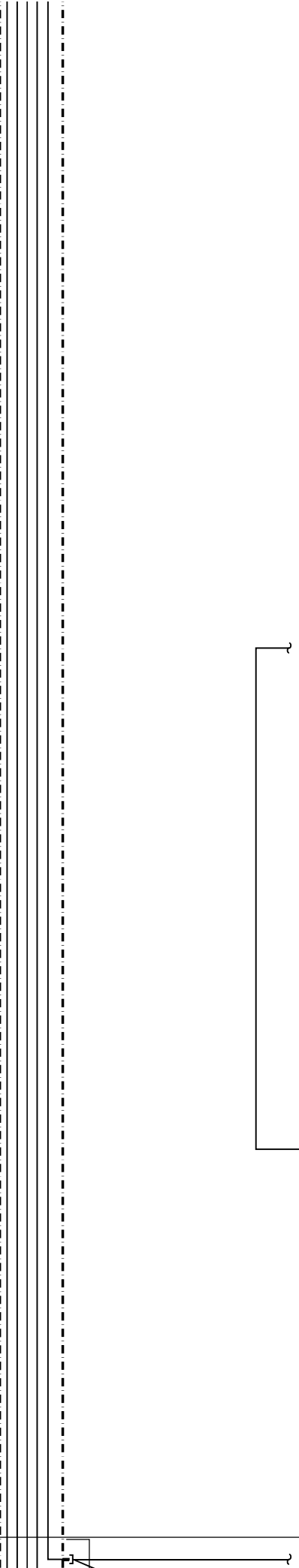
▶ Affix page 2 here ▶

19	20	21	22	23	24	25	26	27	28	29	30	31	32	33	34	35	36	37
----	----	----	----	----	----	----	----	----	----	----	----	----	----	----	----	----	----	----

N80

N80

N80



19	20	21	22	23	24	25	26	27	28	29	30	31	32	33	34	35	36	37
----	----	----	----	----	----	----	----	----	----	----	----	----	----	----	----	----	----	----

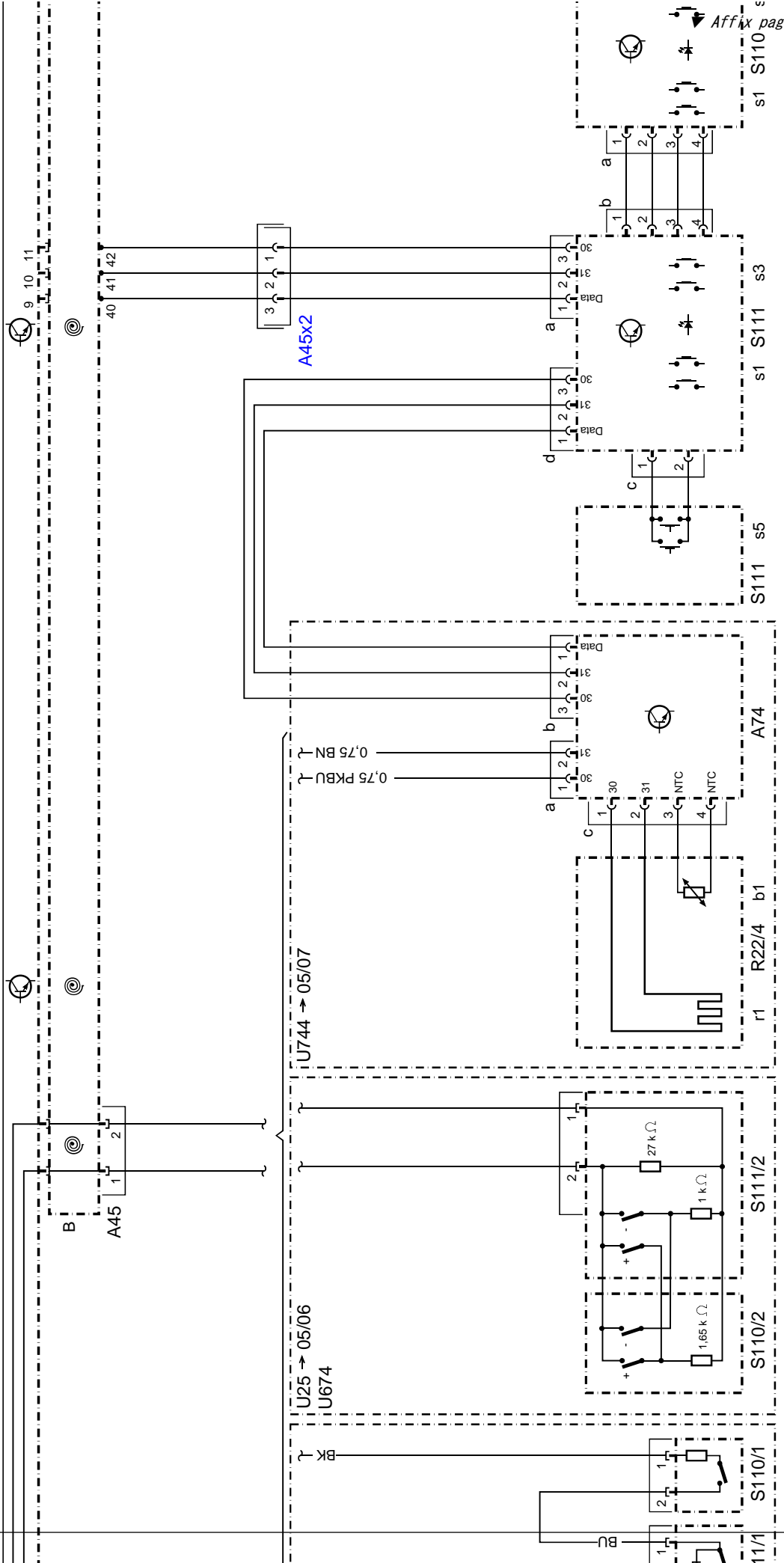
Cut here

Affix page 3 here

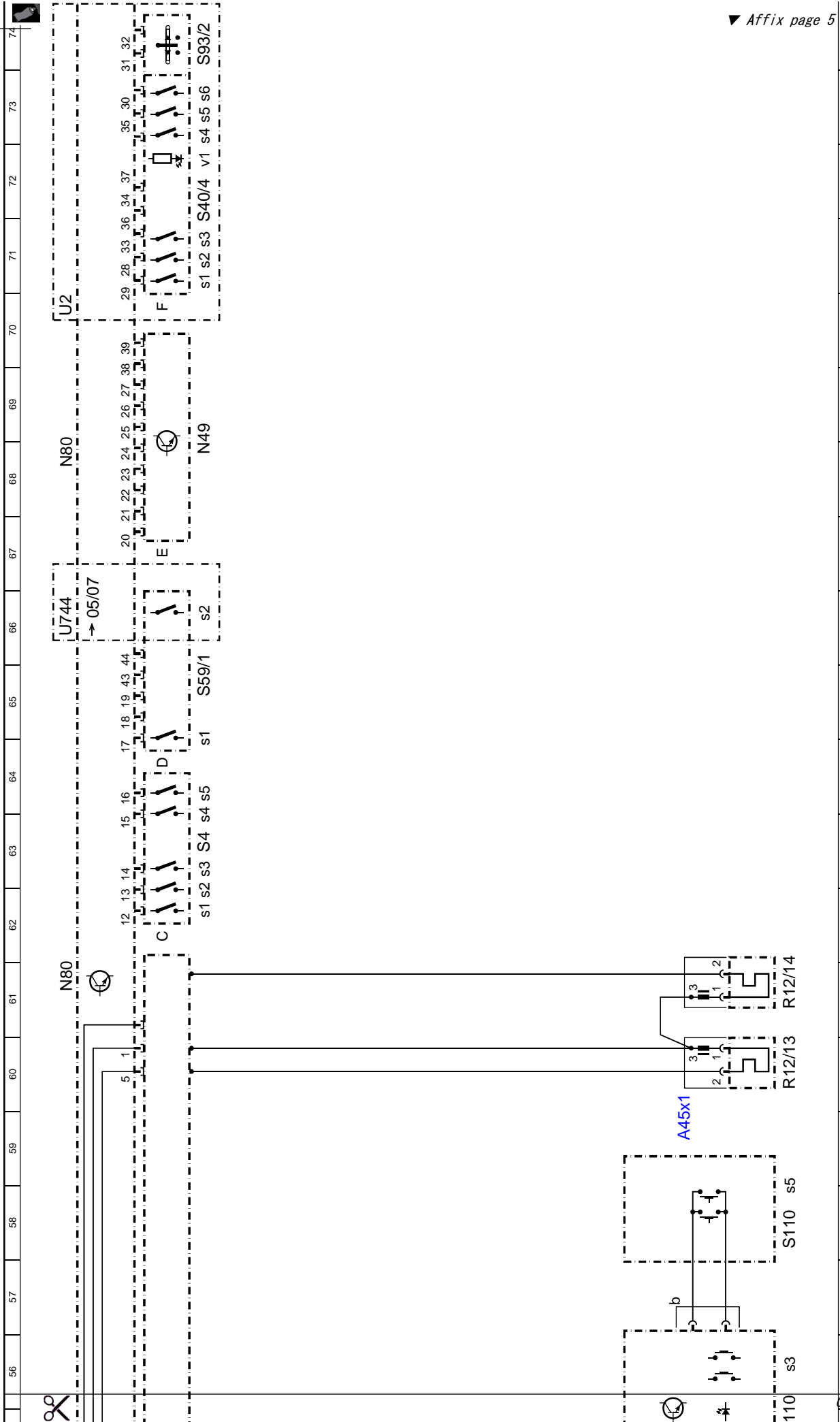


N80

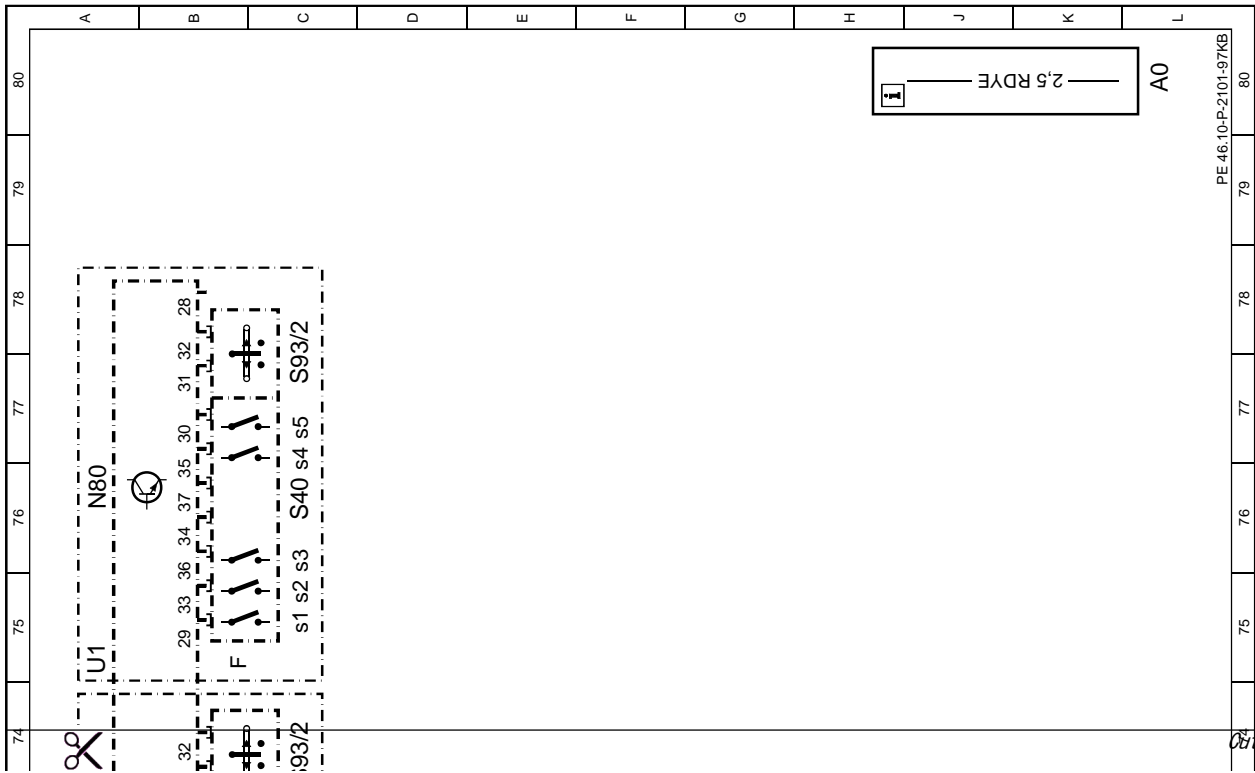
N80



Cut here



▼ Affix page 5 here ▼



cut here