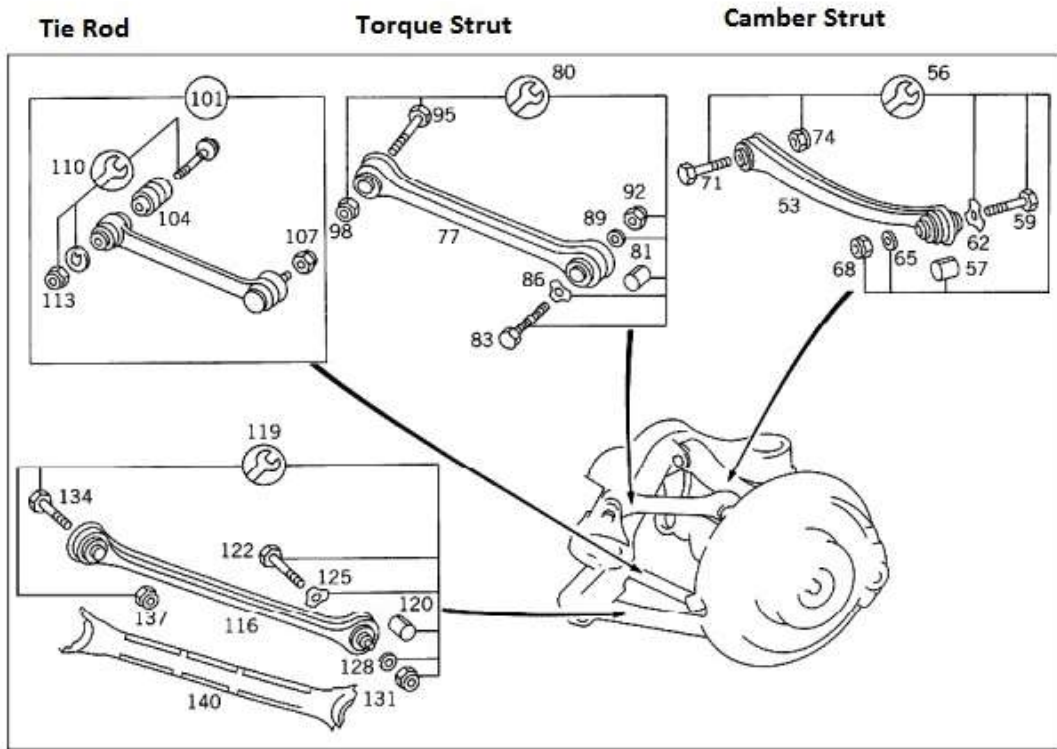


Mercedes W210 Rear suspension torque values



**Thrust Arm**



**Camber strut**

- Self-locking nut, camber strut to rear axle 70Nm
- Self-locking nut, camber strut to wheel carrier
  - M10 40Nm
  - M12 70Nm

## Mercedes W210 Rear suspension torque values



### Rear Spring control arm

- Self-locking nut, control arm-axle carrier 70Nm
- Self-locking nut, control arm-wheel carrier 120Nm



### Thrust arm

- Self-locking nut, thrust arm-axle carrier 70Nm
- Self-locking nut, thrust arm-wheel carrier
  - (M10) 40Nm
  - (M12) 70Nm

## Mercedes W210 Rear suspension torque values



### Tie rod

- Self-locking nut, tie rod-rear axle carrier 70Nm
- Self-locking nut, tie rod-wheel carrier 30Nm



### Torque Strut

- Self-locking nut, strut rod-rear axle carrier
  - (M12) 70Nm
  - (M14) 120Nm
- Self-locking nut, strut rod-rear wheel carrier
  - (M14) 70Nm
  - (M16) 230Nm

## Other useful specs

### Rear axle differential housing

- Bolt, end cover to rear axle differential
  - Bolt+Washer 50Nm
  - Flange bolt (TORX internal)
    - Stage 1 30Nm
    - Stage 2 45Nm
- Oil Filler screw 50Nm
- Oil drain screw 50Nm
- Locking bolt, vibration dampener and housing to rear axle carrier 150Nm
- Breather 30Nm
- Bolt, side bearing cap to rear axle assy 20Nm

### Rear Axle shaft

- Collar nut, rear axle shaft to flange 220Nm
- Self-locking bolt, rear axle shaft to diff (x6) 70Nm  
(Thread and bolt head surface oiled)