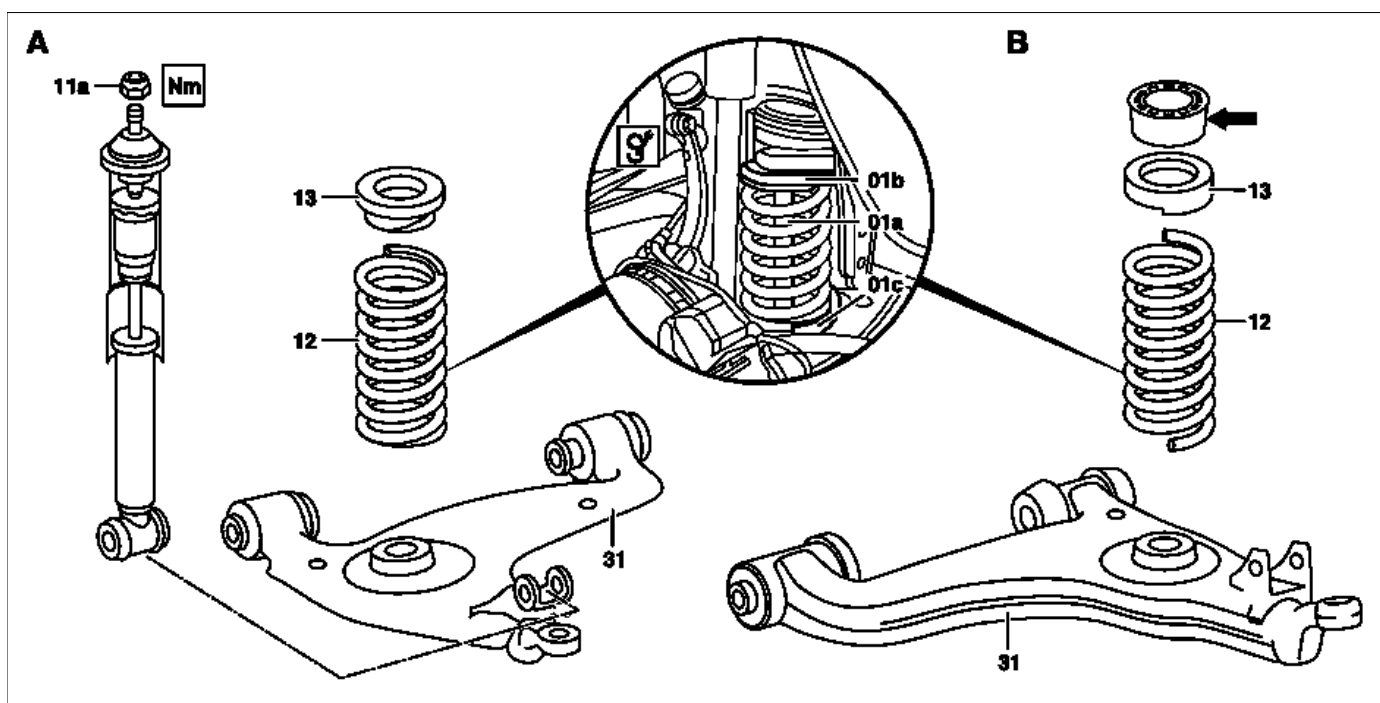


MODEL 140, 170, 202, 208, 210



P32.25-0221-09

A Front spring, models 140

B Front spring, model 170, 202, 208, 210

	Removing, installing		
	General information on springs	Models 129, 140, 168, 170, 202, 208, 210	AH32.20-P-9404-01A
1	Detach upper shock absorber fixing and raise vehicle.	Model 140 The vehicle must be on its wheels for removing the upper shock absorber fixing. Steady piston rod using Allen wrench <b>Installation:</b> Replace self-locking nut (11a).	*BA32.25-P-1001-01A
2	Insert clamping plates (01b, 01c)	Model 140 Models 170, 202, 208, 210	*202589146300 *202589136300
3	Insert clamping device (01a)	 Model 210 alternatively	*202589013100 *202589023100
<b>Danger!</b>	<b>Risk of injury</b> from being <b>trapped or crushed</b> when working on preloaded springs or spring bodies	Only use approved clamping devices and if appropriate also screen off the danger area. Check special tools for damage and function, (visual inspection). Wear safety gloves.	AS00.00-Z-0001-01A
4	Clamp, unclamp front spring		AR32.20-P-0200-01A
5	Remove front spring (12) with rubber mount (13) forwards	Clean wishbone in area of support surface Models 170, 202, 208, 210: additionally insert plastic support (arrow) Models 202, 210: insert zinc sealing washer for England and Scandinavia.	
<b>BT</b>	Modified front and rear springs	Model 202 After replacing the front spring or rubber mount: ↓ Check and correct headlamp adjustment	BT32.20-P-0001-01A AP82.10-P-8260A
6	Install in reverse order		

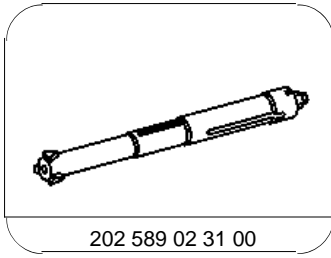
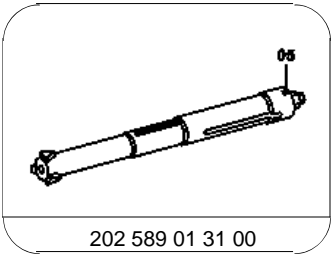
## Front axle shock absorber

Number	Designation	Model 140

BA32.25-P-1001-01A

Self-locking nut for fastening shock absorber to front end

Nm 40



Clamping device

