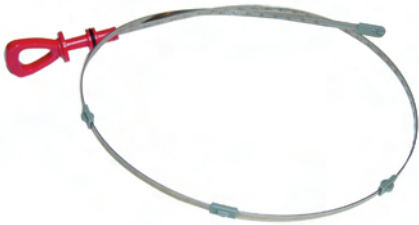




Mercedes “Lifetime No Service” Dipsticks



These “dipsticks” are designed for use in the “Lifetime No Service” vehicles produced by Mercedes from 1988 to the present. Originally these vehicles were not equipped with a fluid level indicators or dipsticks. As these “Lifetime No Service” vehicles age they now require oil and fluid maintenance.



275-0021
Engine Oil Level Dipstick
(2003-2007)
Engine: 275



120-0721
Engine Oil Level Dipstick
(1996-2005)
Engines: 112, 113, 271, 272,
642, 646, 647, 648



120-0621
Engine Oil Level Dipstick
(1988-1997)
Engines: 103, 104, 111,
119, 120, 137, 604, 605,
606, 611, 612, 613, 628,
642, 647, 648



140-1521
Transmission Fluid Level Dipstick
(1996-2004)
Transmission: 722.6



168-0121
Transmission Fluid Level Dipstick
Transmission: 716.5, 722.7, 722.8
A-Class



800-848-6657





Mercedes Ignition & Dashboard Tools



Complete Ignition and Dash Kit

Kit includes early and late model ignition switch cover grippers, retainer nut socket (6/97 and newer), ignition lock release pins, dash removal hooks and radio release keys.

Applications are for the models listed below.

W129, 140, 164, 169, 171, 199, 202, 203, 208, 209, 210, 211, 215, 219, 220, 221, 230, 240, 245, 251, 414, 463, 639

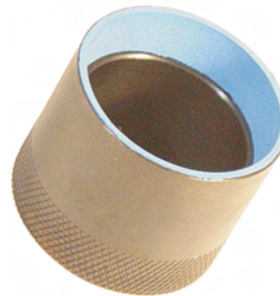


Ignition Switch Cover Remover

#202-0014

Shell with rubber insert to grip the ignition switch cover to aid in removal and installation without causing damage. (from 1992)

W126, 129, 140, 163, 170, 202, 210, 414



Ignition Switch Cover Remover

#126-0714

Shell with rubber insert to grip the ignition switch cover to aid in removal and installation without causing damage. (1981-1992)

W126, 129, 140

Ignition Lock Retainer Socket

#210-0007

Removes and installs the retainer rosette on the ignition switch or electronic ignition switch (EIS) module. Use with #202-0014.



R129, W140, 164, 169, 171, 199, 202, 203, 208, 209, 210, 211, 215, 219, 220, 221, 230, 240, 245, 251, 414, 463, 639

Dashboard Service Kit

#900-0059K



Ignition Lock Removal Pins - W124, 126, 201

Dash Hooks - W107, 116, 123, 124, 126, 140, 201

Radio Removal Keys - W129, 140, 202, 210



800-848-6657





Mercedes Engine Fan & Pulley Tools



Combination Idler Pulley / Viscosity Fan Bolt Wrench



#900-0307

Application: Special wrench with long 10mm allen for loosening and tightening the mount bolts for the idler pulley when adjusting the V belt and a short 8mm bit for the viscosity fan bolts.

Engines: 116, 117, 119 (10mm) & 103, 104, 119, 120, 602, 603, 605, 606 (1992-1999) (8mm)

Viscosity Fan Clutch Wrench



#ST3008

Application: Special short 8mm allen wrench for accessing viscosity fan clutch mount bolts with the engine in place. Special "free wheeling" action speeds bolts in and out.

Engines: 103, 104, 119, 120, 602, 603, 605, 606 (1992-1999)

Pulley Mount Bolt Wrench - 10mm

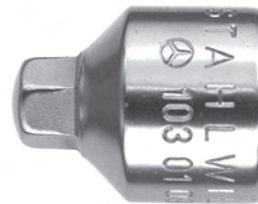


ST1009DC

Application: Use to loosen and tighten the mount bolts of the idler pulley when adjusting v-belt of refrigerant compressor. Special 10mm allen wrench 500mm long handle.

Engines: 116, 117, 119

Viscous Fan Clutch Allen Socket



ST3049-8

Application: Removes screws on viscosity fan couplings and pulley facings. 8mm X 24mm Long 3/8" Dr. The same as #103-0209. Use with #103-0040

Engine: 103, 104, 119, 120, 602, 605, 606

Fan Hub Counter Holder



#603-0040

Application: Use to hold fan hub tight while removing mount bolts form viscosity fan clutch. Use with wrench #ST3008.

Engines: 602, 603, 604, 605, 606 (1986-1999)

Fan Hub Holder



#103-0040

Application: Special holding tool for locking the viscosity fan hub so the mount bolts can be removed. Use with wrench #ST3008.

Engines: 103 & 104



800-848-6657





Mercedes Engine Fan & Vibration Damper Tools



Fan Clutch Wrench



#120-0201

Application: Thin 65mm wrench for accessing the retainer nut on Mercedes fan clutches. Models 6 cyl. 1986-1997, V8 1992-1999 & V12 1990-2002.

Engines: 103, 104, 119, 120

Fan/Vibration Damper Counter Holder

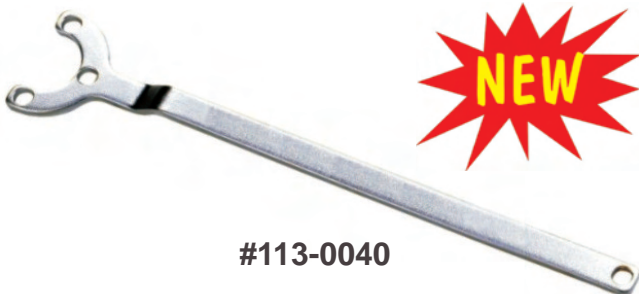


#112-0040

Application: Use to hold the vibration damper while removing central crankshaft mount bolt.

Engines: 112, 113, 137 (1996-2003)

Fan Hub Counter Holder



#113-0040

Application: Use to hold fan hub tight while removing mount bolts from viscosity fan clutch. Use with wrench #113-0001.

Engines: 112, 113, 119, 985 (1996-2003)

Fan Hub Retainer Wrench



#B113-0001

Application: Special extra narrow, thin and long wrench to loosen and tighten 36mm fan hub lock nut. Use with fan hub holder #113-0040.

Engines: 111, 112, 113, 604

Flywheel Lock



112-0340

Application: Use to lock crankshaft on starter ring gear (mount in starter hole) for vehicles with left and right-hand steering.

Engines: 112, 113, 137

Flywheel Lock



601-0240

Application: Use to lock crankshaft on starter ring gear (mount in starter hole) for vehicles with left and right-hand steering.

Engines: 102, 103, 104, 111, 601, 602, 603, 604, 605, 606



800-848-6657

