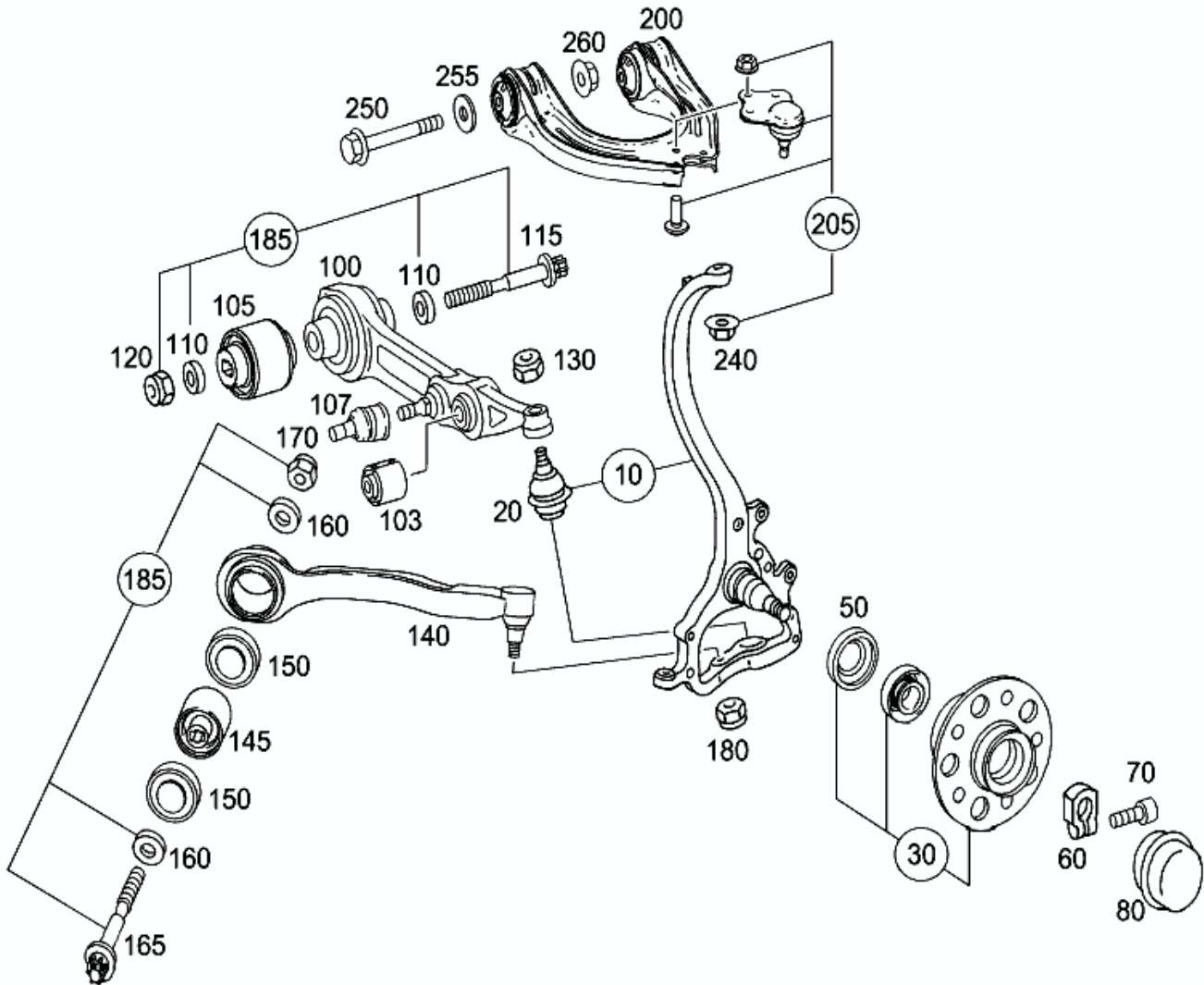


# - Picture -







Mode	MD mode	Mod. des. overview	E SEDAN
FIN/MD	WDB 211076 [REDACTED]	Catalog	64U
VIN	WDBUF76J06 [REDACTED]	Major assembly	
Sales designation	E 55 AMG	Major assembly	MD
Assortment class	Car	Group	33 - FRONT AXLE
Market	North America	Subgroup	030 - STEERING KNUCKLE AND CONTROL ARM
Picture number	B33030000053.090730		





- SHOPPING LIST -

Shopping list: 06 E55 - WDB211076 [REDACTED]  
 Customer name: Greg  
 Contact:  
 Order no.:  
 Note:

Date/time: 02/14/12 09:47 AM  
 Created by: epc14864  
 Changed by: epc14864  
 Workshop ID::

Damage code	Item no.	Part no.	ES1	ES2	Designation/description	Quantity	Qty on hand	Price	Warranty/goodwill code
	200	A 211 330 90 07 WDB211076 [REDACTED]			TRANSVERSE CONTROL ARM TOP RIGHT	001			
	260	N 000000 005268			NUT TRANSVERSE CONTROL ARM LEFT TO BODY	004			
	255	A 211 333 00 84			SHIM TRANS. CON. ARM TO BODY	008			
	250	N 000000 002483			HEXAGON HEAD BOLT TRANS. CON. ARM TO BODY M10X85	004			
	240	N 000000 003279			HEXAGON NUT UPPER TRANSVERSE CONTROL ARM TO STEERING KNUCKLE M10	002			
	205	A 000 330 10 07			RS TRANSVERSE CONTROL ARM REPAIR SIZE	002			
	200	A 211 330 89 07			TRANSVERSE CONTROL ARM TOP LEFT	002			
	185	A 000 330 00 18			TS BOLT PARTS KIT FOR ADJUSTING WORK ONLY	004			
	165	N 910105 014022			HEXAGON HEAD BOLT TORQUE STRUT TO FRAME-TYPE INT. SUPP. M14X1.5X120	002			
	150	A 211 333 06 97			ELASTOMERIC CUP COVER, HYDRO-MOUNT, LEFT AND RIGHT	004			
	145	A 211 333 28 14			BEARING LEFT AND RIGHT	002			
	140	A 211 330 44 11			STRUT RIGHT WITHOUT BEARING	001			
	140	A 211 330 43 11			STRUT LEFT WITHOUT BEARING	001			
	120	N 000000 003281			HEXAGON NUT SPRING LINK TO FRAME-TYPE INT. SUPP. M14X1,5	008			
	115	A 002 984 43 29			BOLT SPRING LINK TO FRAME-TYPE INT. SUPP. M14	002			
	110	A 220 333 00 76			SHIM SPRING LINK TO FRAME-TYPE INT. SUPP.	008			
	107	A 211 323 00 68			JOINT LEFT SPRING CONTROL ARM	002			
	105	A 211 333 11 14			BEARING SPRING LINK TO FRAME-TYPE INT. SUPP.	002			
	103	A 211 333 19 14			BEARING SPRING LINK TO TORSION BAR	002			
	100	A 211 330 82 07			SPRING CONTROL ARM BOTTOM RIGHT	001			
	100	A 211 330 81 07			SPRING CONTROL ARM BOTTOM LEFT	001			
	80	A 168 357 00 89			PLUG WHEEL HUB, LEFT AND RIGHT	002			
	70	N 000000 003358			HEXALOBULAR BOLT FRONT WHEEL HUB TO STEERING KNUCKLE M6X25	002			
	60	A 000 990 43 60			CLAMPING NUT FRONT WHEEL HUB TO STEERING KNUCKLE	002			
	50	A 025 997 16 47			SEAL RING LEFT AND RIGHT	002			

	30	A 230 330 03 25	FRONT WHEEL HUB LEFT AND RIGHT	002
	20	A 211 330 04 35	SUPPORTING JOINT LEFT AND RIGHT	002
	10	A 211 330 67 20	STEERING KNUCKLE FRONT RIGHT	001
	10	A 211 330 66 20	STEERING KNUCKLE FRONT LEFT	001