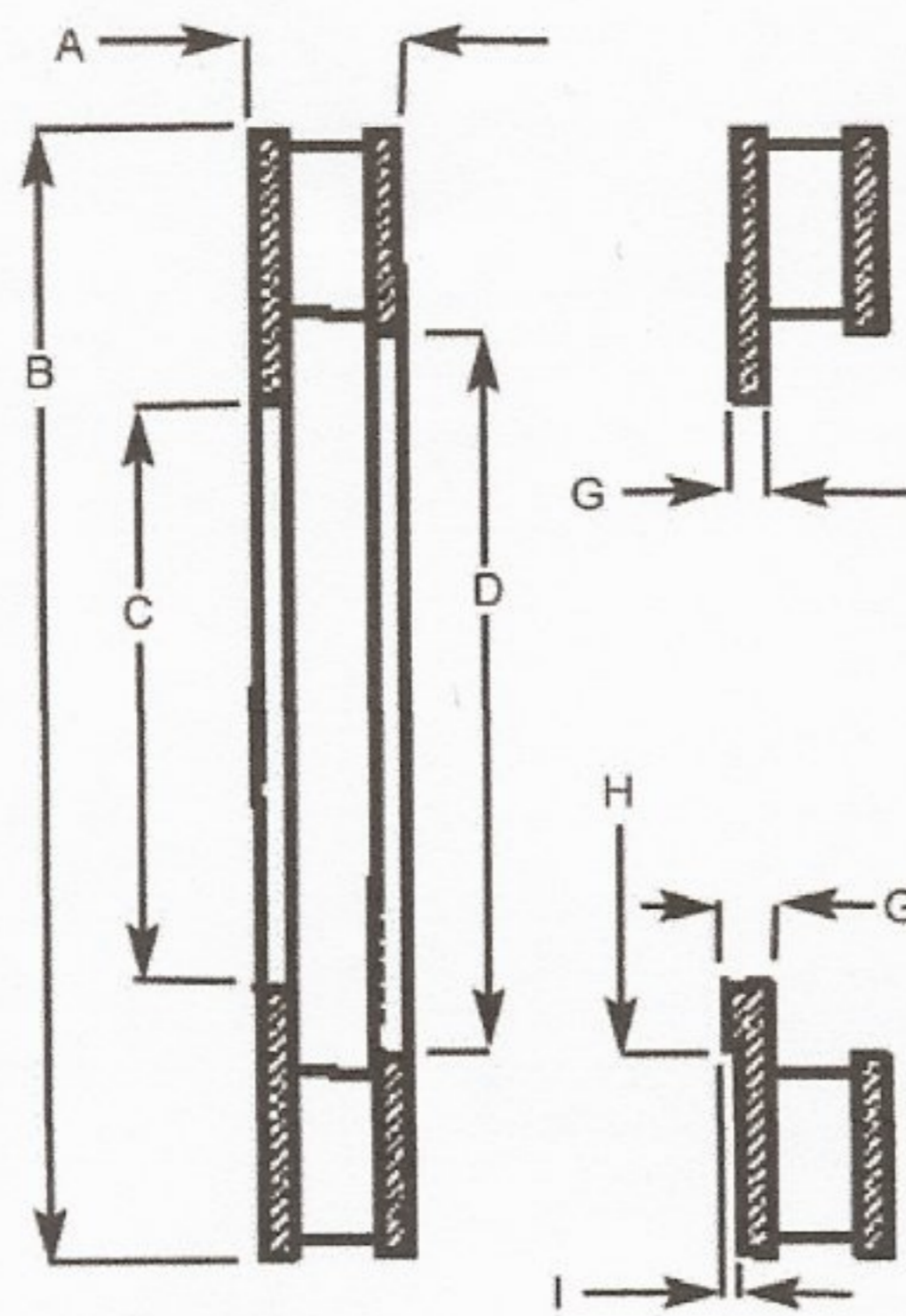
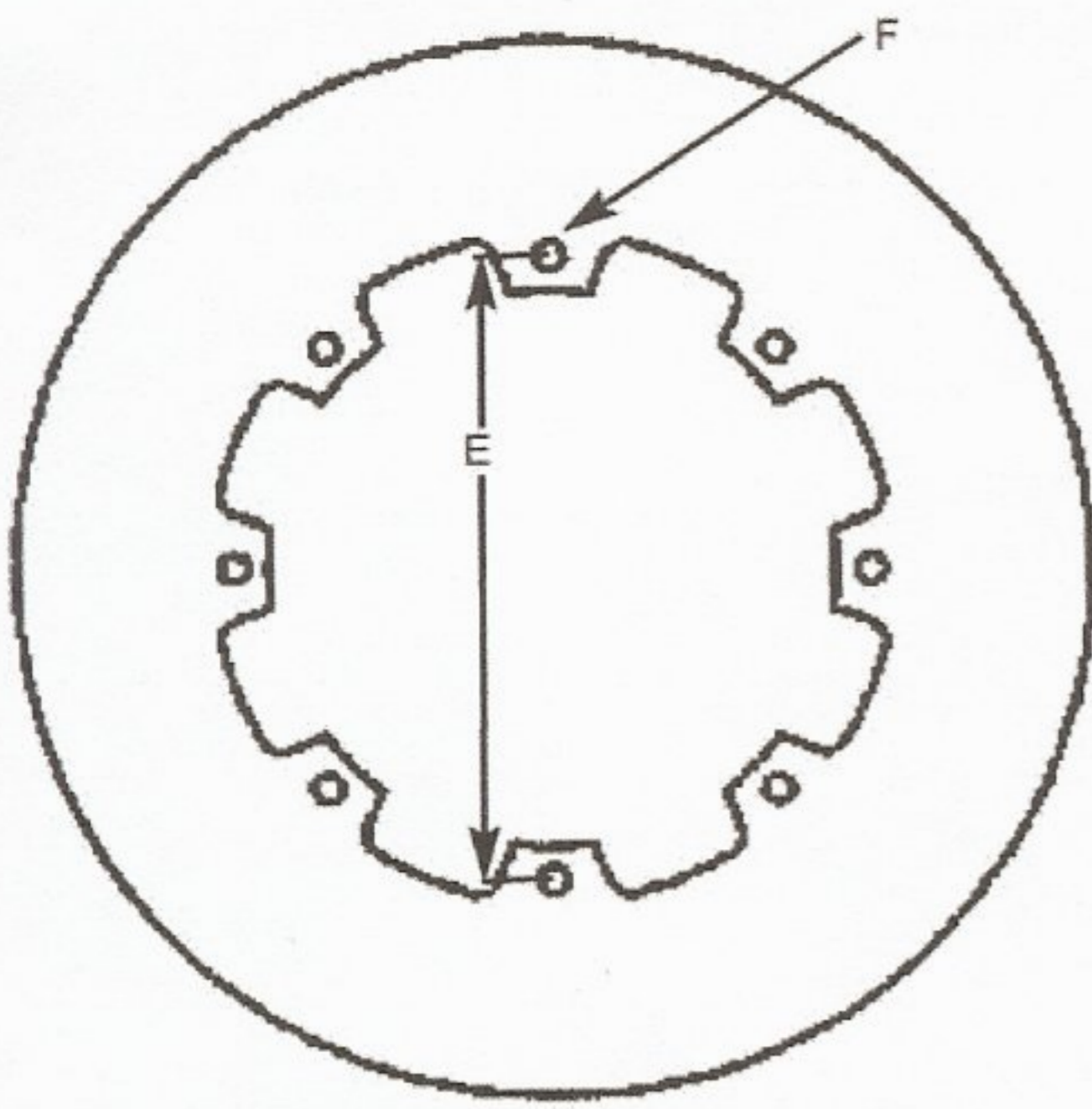


SOLID MOUNT ROTOR

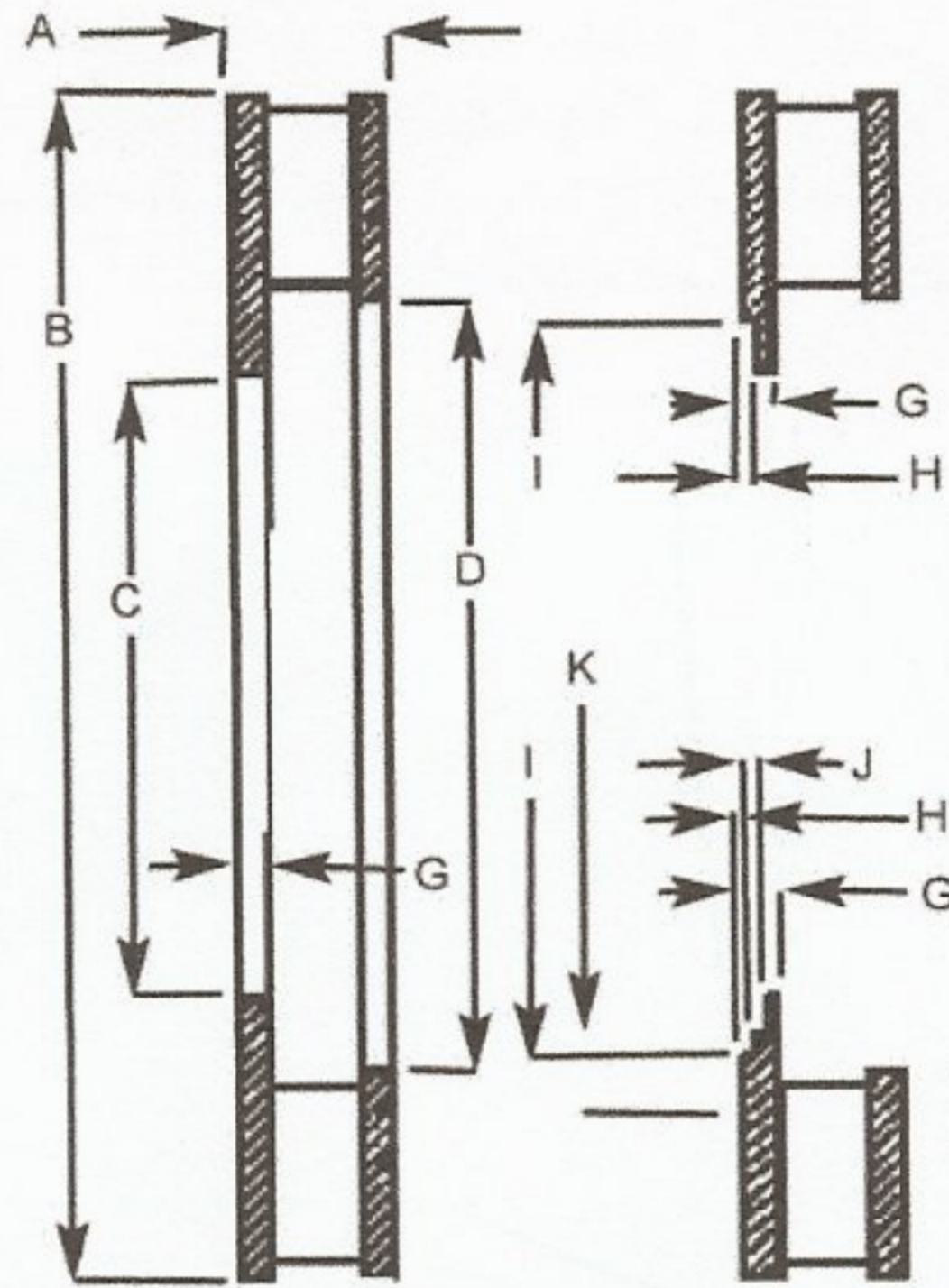
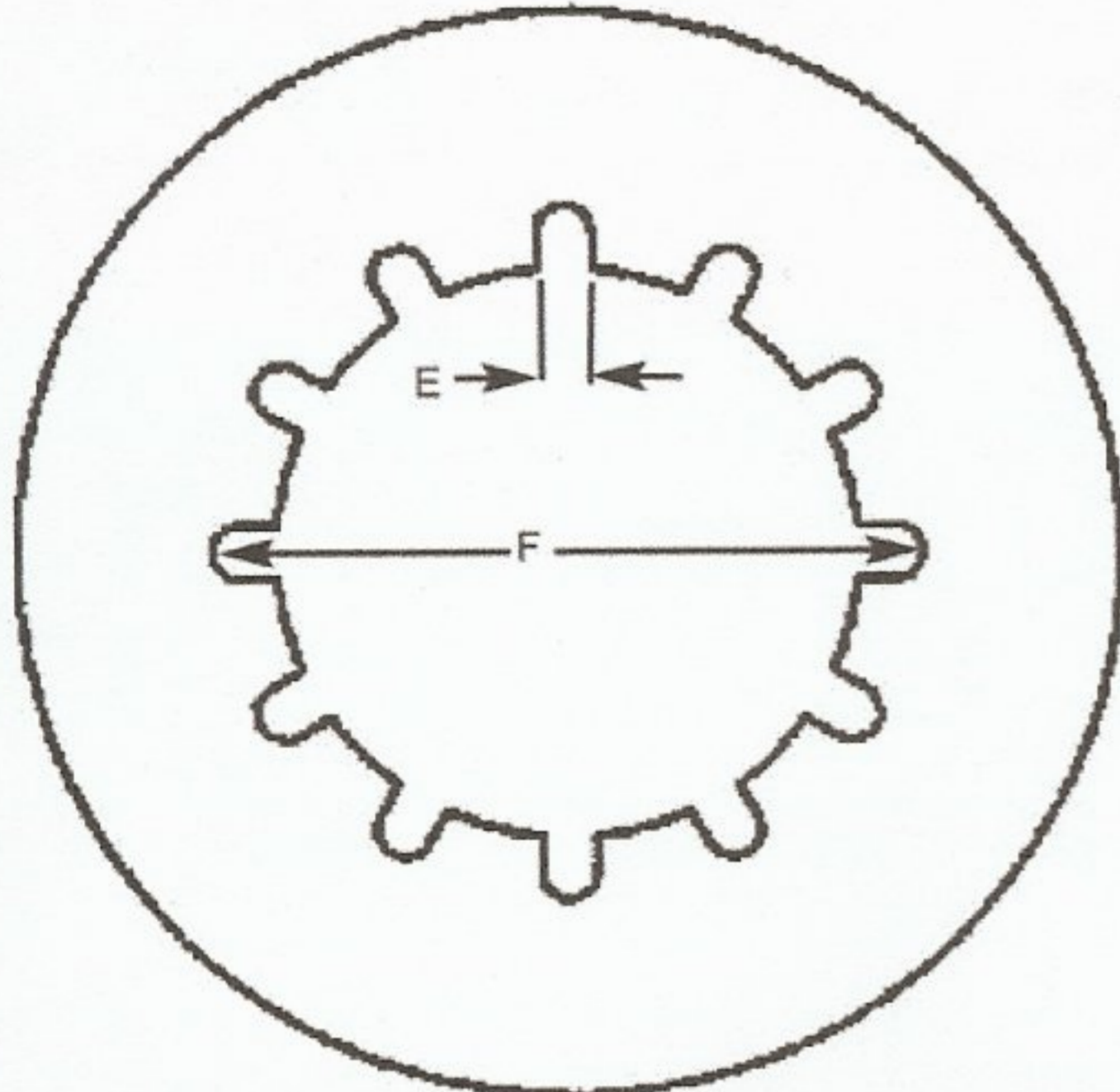


- A= _____ Thickness
- B= _____ Diameter
- C= _____ Flange Diameter
- D= _____ Eye Diameter
- E= _____ Bolt Circle
- F= _____ Size Of Bolt Holes
- F= _____ No. Of Bolt Holes
- G= _____ Flange Thickness
- H= _____ Step Diameter
- I= _____ Step Depth

Approved By: _____

Date: _____

FLOATING MOUNT ROTOR



- A= _____ Thickness
- B= _____ Diameter
- C= _____ Flange Diameter
- D= _____ Eye Diameter
- E= _____ Slot Width
- E= _____ No. of Slots
- F= _____ Slot Tip to Tip
- G= _____ Flange Thickness
- H= _____ Step Depth
- I = _____ Step Diameter
- J = _____ Step Depth
- K= _____ Step Diameter

Approved By: _____

Date: _____

NOTE: All custom rotors must have spec sheet, blueprint or sample part. We can not make custom rotors with dimensions supplied over the phone. All spec sheets must be signed and dated by the purchaser or person supplying the sizes. Coleman Machine, Inc. is not responsible for any failure of custom rotors due to improper fit, improper tolerances or any problems encountered with the sizes or design of the finished part when machined to the customers specifications.