

Sliding Cover Console Removal

2005 model W211 with the sliding cover console. *Earlier hinged covers have a different removal procedure for the console!* Photos have been rearranged for clarity but you may notice oddities such as screws removed in an early photo but still installed in a later photo. This was due to additional photos taken during reassembly. When working to remove the console, push the release button on the shift module so you can move the shift lever for easier access to what you are working on.

Removal instructions on following pages.

Squeeze the boot at base of shift lever and remove:



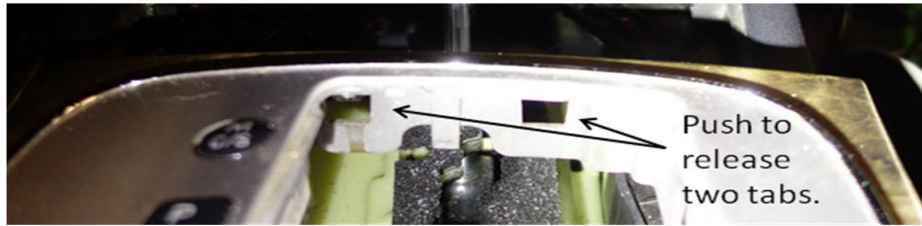
Pull boot upward to expose the locking nut on the shift knob:



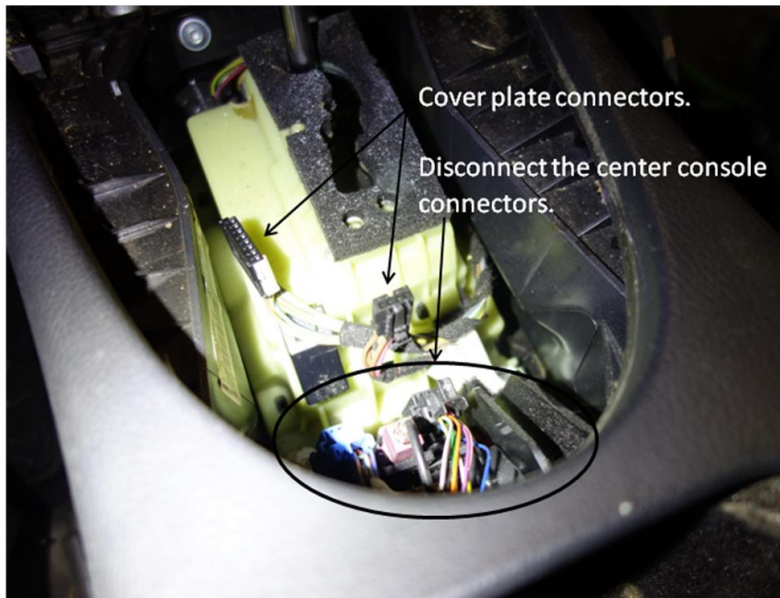
Twist locking nut to release. Lift shift knob straight up; do not twist!



To remove cover plate, release the two tabs located in front of cover and lift. You can then disconnect the electrical connectors underneath but there is not much room available so use caution.



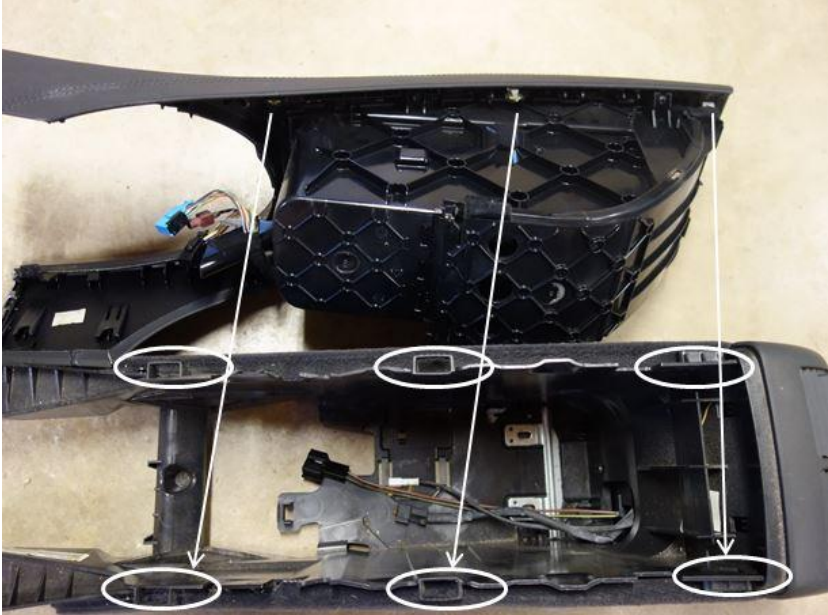
Disconnect the center console connectors:



Remove the two outer screws in the front:



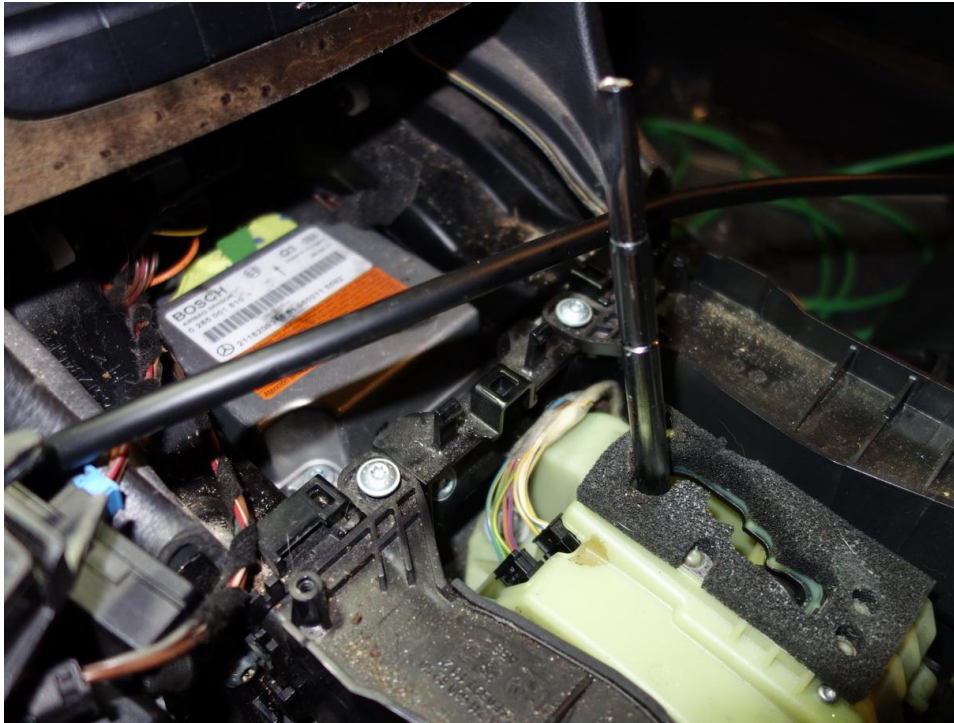
Remove upper half of console by lifting straight up. It is held in place by six each metal clips that fit into plastic fittings in the console bottom.



Move ashtray out of the way by releasing two tabs with a small screwdriver. This photo is out of sequence; the two inner screws should still be in place at this time. I had already removed the two inner screws and realized I could not remove the lower half of the console until I moved the ashtray out of the way.



Remove the two inner screws at the front:



Remove two screws at rear and disconnect electrical connectors:



Lift front of console to release the “tabs and slots” from the center dashboard and remove lower half of console:

