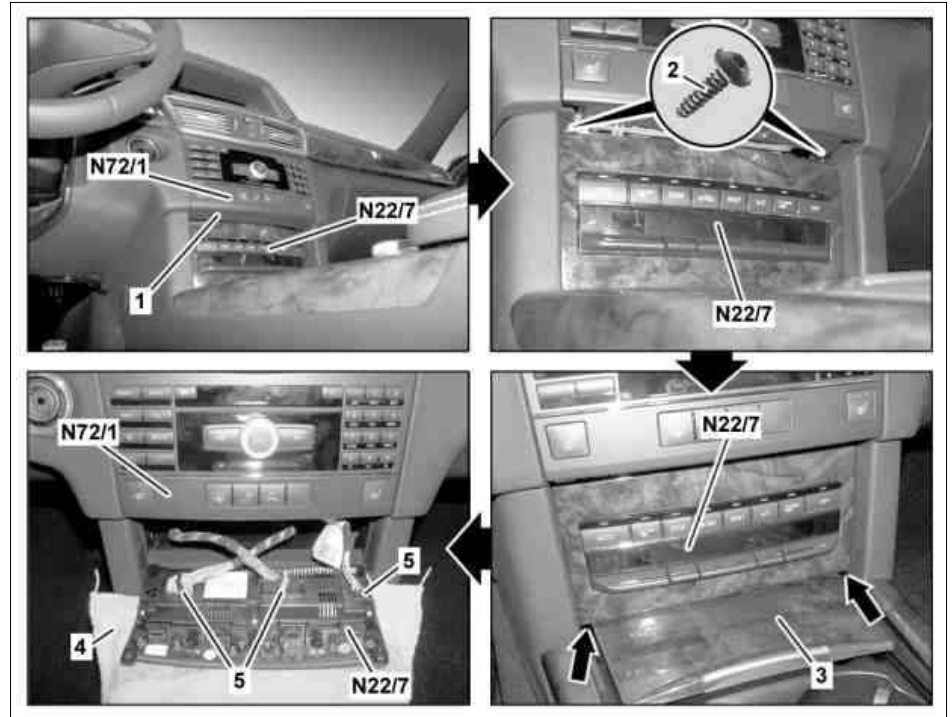


**MODEL 212, 218**  
**Front control and operating unit**

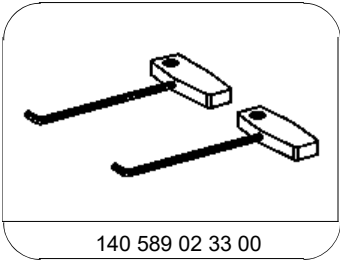
Shown on model 212 with code (279)  
 Electronic gear selector

- 1 Cover  
 2 Screw  
 3 Cover  
 4 Dry cloth  
 5 Electrical connectors
- N22/7 Automatic air conditioning control and operating unit  
 N72/1 Upper control panel control unit



P83.40-4278-06

☒ ☒	Remove/install		
ⓘ	Information on preventing damage to electronic components due to electrostatic discharge		AH54.00-P-0001-01A
1  AD	Buffer the basic data of the automatic air conditioning control and operating unit (N22/7) in STAR DIAGNOSIS  Connect STAR DIAGNOSIS and read out fault memory	When replacing the automatic air conditioning control and operating unit (N22/7).  <b>i</b> <b>Installation:</b> Transfer the buffered basic data onto the new automatic air conditioning control and operating unit (N22/7).	AD00.00-P-2000-04A
2	Move selector lever or gearshift lever to rearmost position	<b>i</b> Depending on vehicle equipment.	
3	Switch off ignition		
4	Unclip cover (1) from upper control panel control unit (N72/1) using extraction hook and remove	☒	*140589023300
5	Cover up center console using a dry cloth (4)		
6	Remove bolts (2)		
7	Open lid (3)		
8	Apply extraction hook at denoted areas (arrows), release AAC control and operating unit (N22/7) by pulling upwards and remove, until the electrical connectors (5) are accessible	☒	*140589023300
9	Disconnect electrical connectors (5)		
10	Install in the reverse order		
11  AD	Teach in and normalize the actuator motors  Connect STAR DIAGNOSIS and read out fault memory	<b>i</b> The actuator motor is taught in via STAR DIAGNOSIS.	AD00.00-P-2000-04A



140 589 02 33 00

Pulling hook